

Polyaniline-modified cobalt oxide nano-flower for efficient electrochemical detection of nitrite

Nora Ibrahim¹, Shymaa S. Medany^{*2}, Sahar A. Fadlallah^{*1,2}, Mahmoud A. Hefnawy^{*2}

¹ Biotechnology Department, Faculty of Science, Cairo University, Giza, Egypt

² Chemistry Department, Faculty of Science, Cairo University, Giza, Egypt

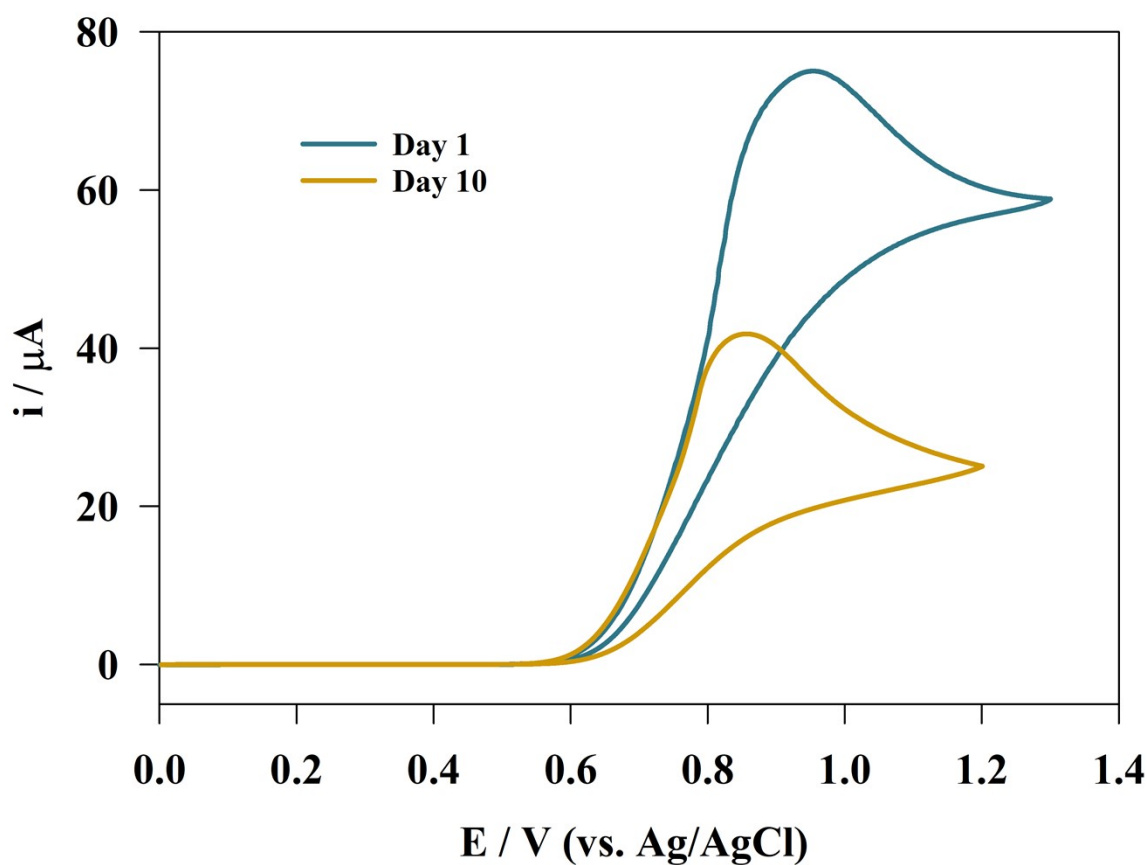
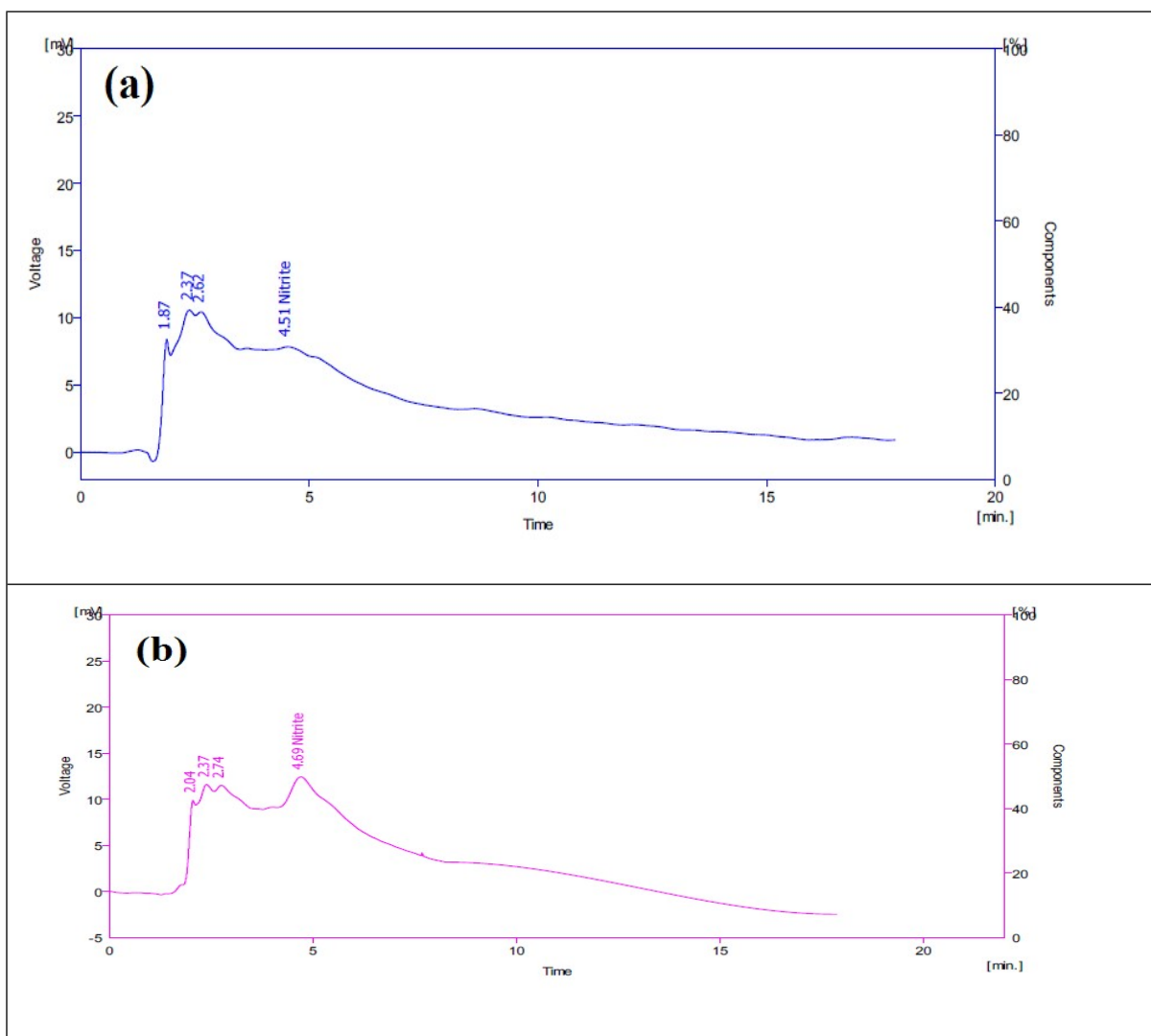


Figure S1: CVs of GC/Pani/Co₂O₃-NF modified electrode after 10 days



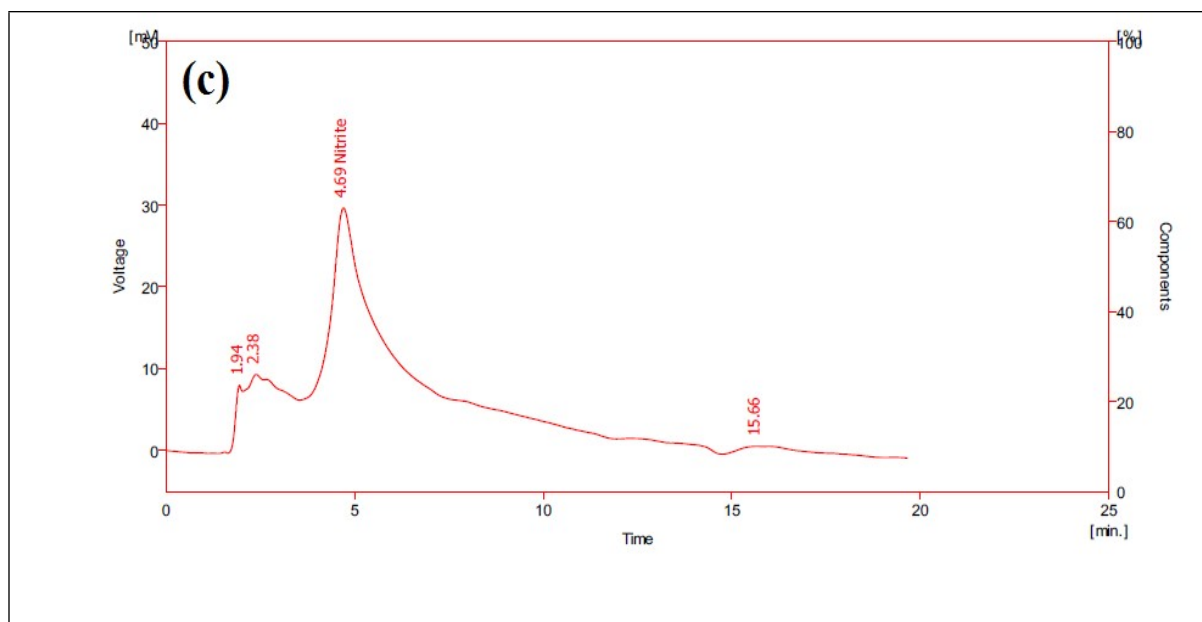
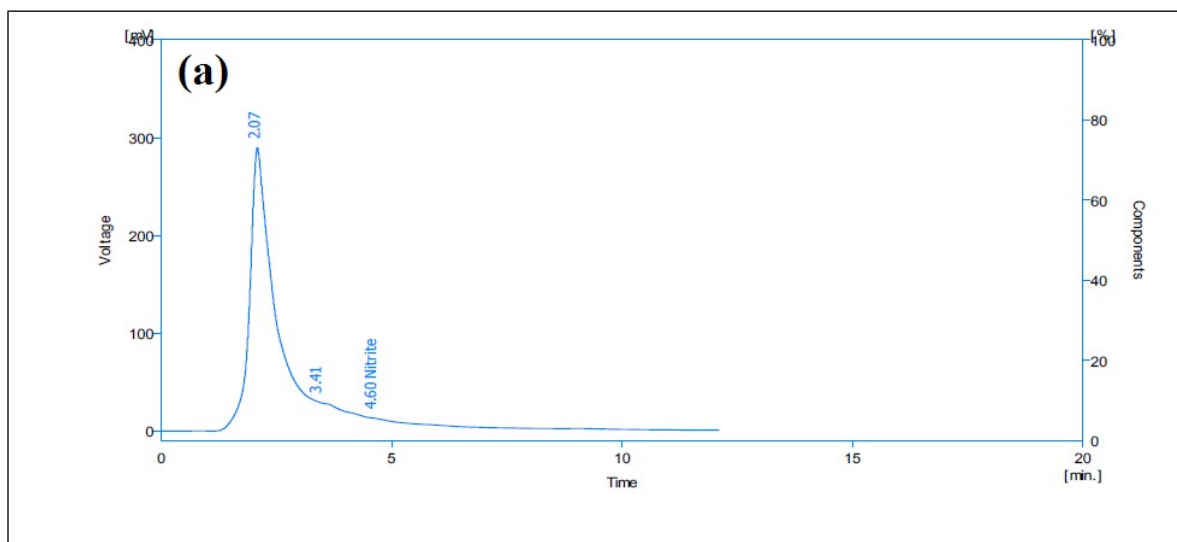


Figure S2: Representing the HPLC curves for detecting of nitrite in sausage sample, (a) initial conc. of sausage sample, (b) by adding 2mM of nitrite for sausage sample (c) adding another 2mM of nitrite for sausage sample.



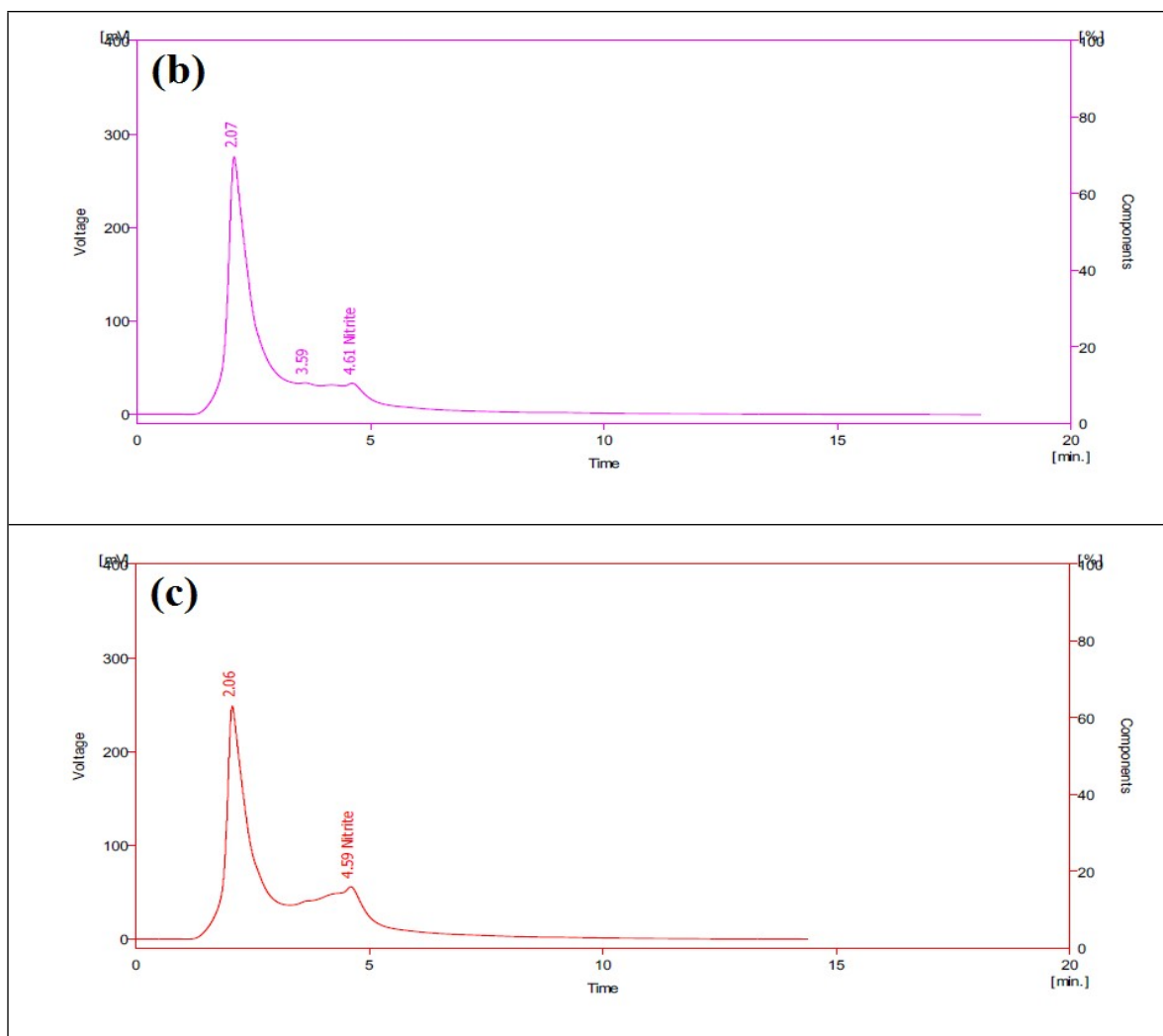


Figure S3: Representing of HPLC curves for nitrite detection in apple juice samples, (a) initial conc. of apple juice, (b) by adding 2mM of nitrite for apple juice (c) adding another 2mM of nitrite for apple juice.