

Appendix

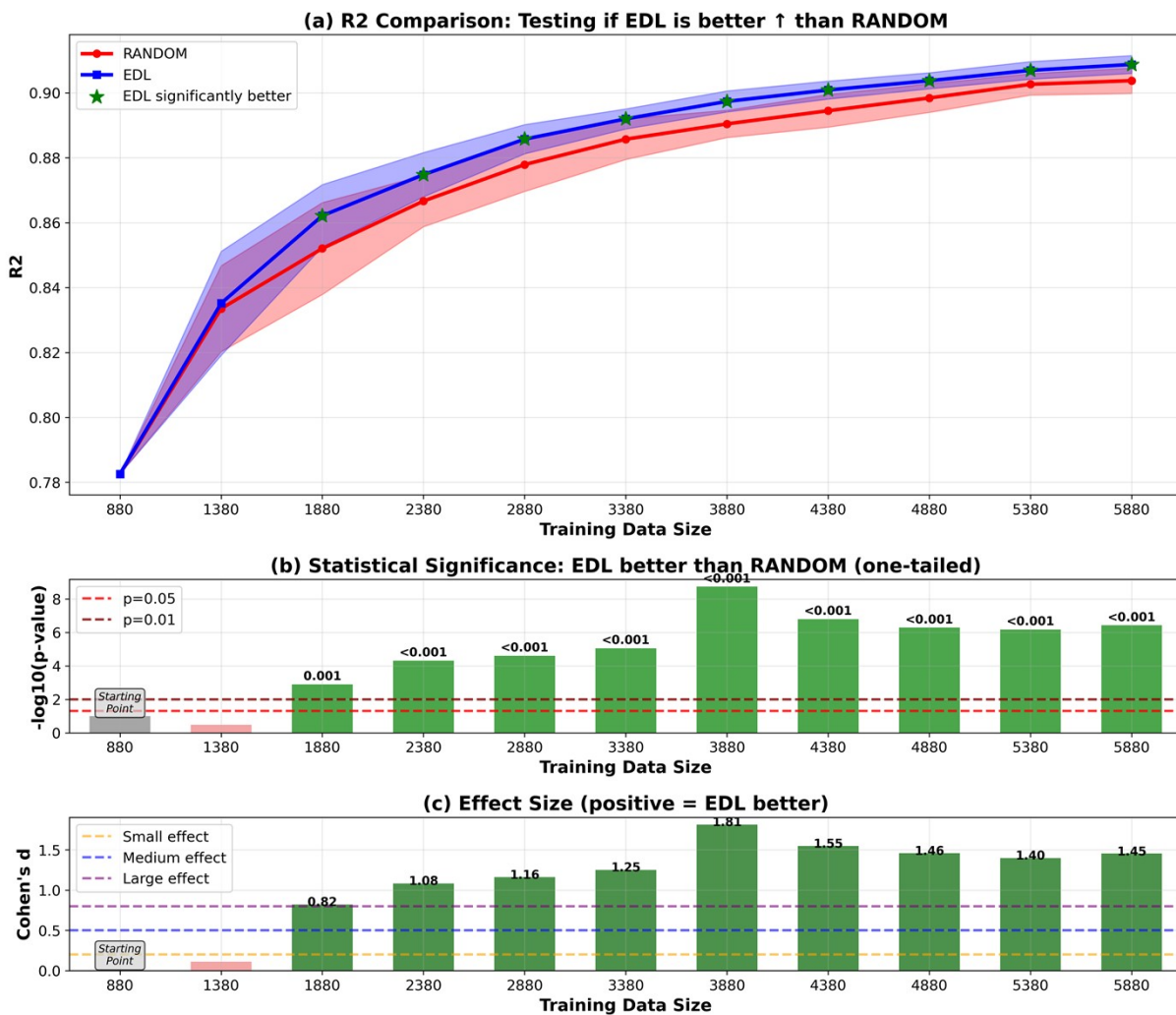


Figure A1. R² results of EDL compared with random sampling within the SOMAS dataset. Each iteration adds 500 samples.

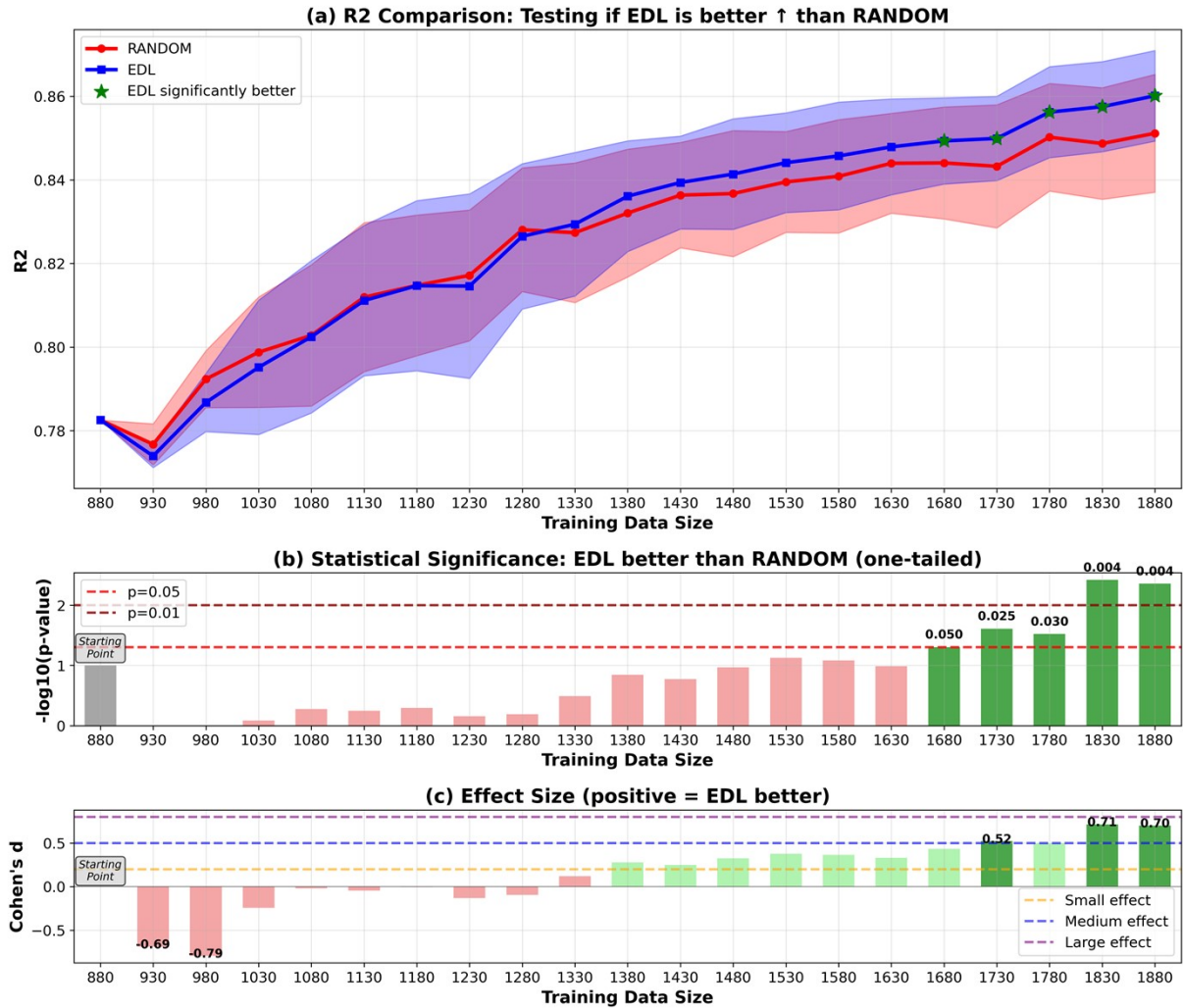


Figure A2. R² results of EDL compared with random sampling within the SOMAS dataset. Each step adding 50 samples.

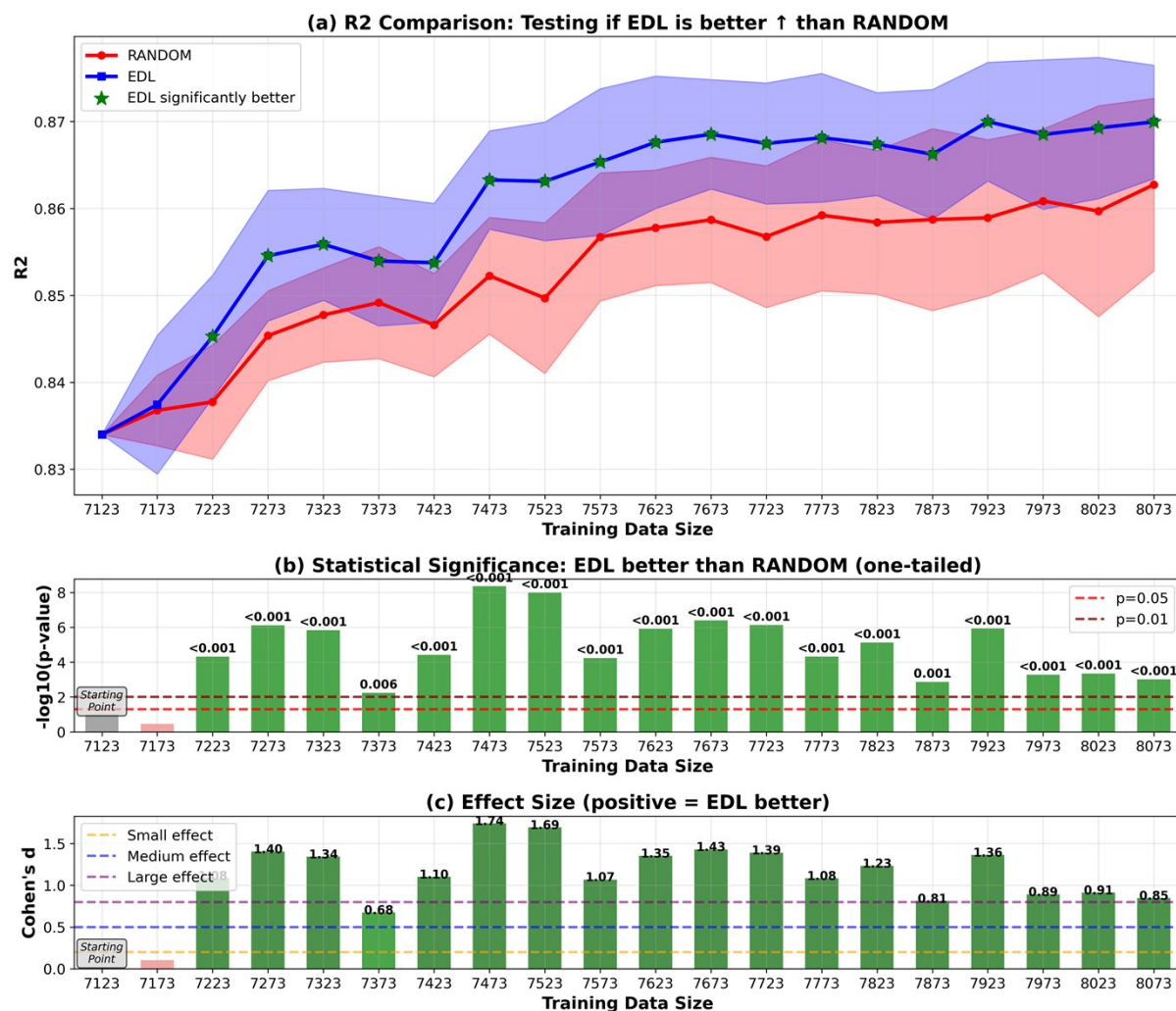


Figure A3. R² results of EDL compared with random sampling, starting with the SOMAS dataset and generalizing to the PubChem dataset. Each iteration adds 50 samples.

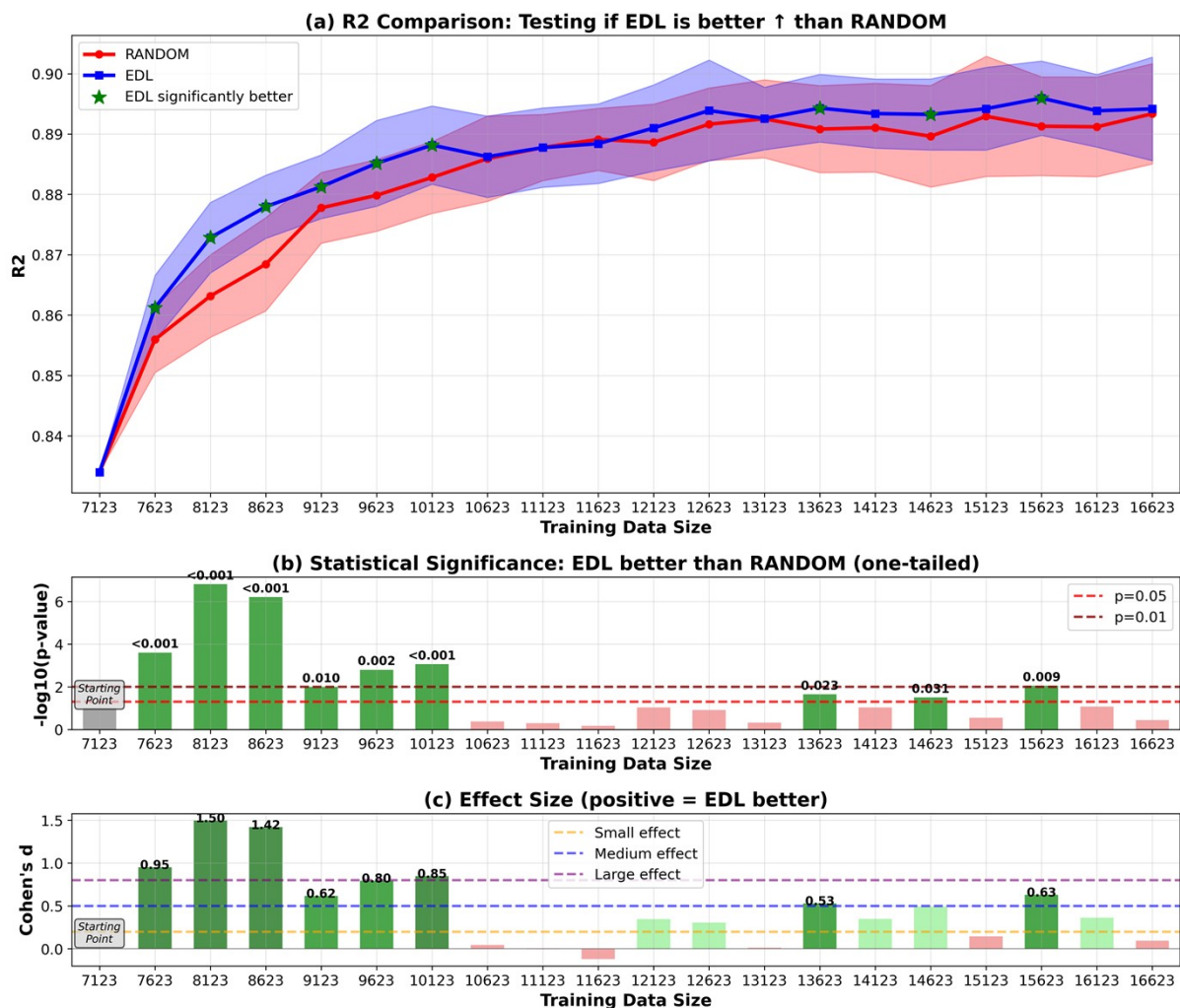


Figure A4. R² results of EDL compared with random sampling, starting with the SOMAS dataset and generalizing to the PubChem dataset. Each iteration adds 500 samples.

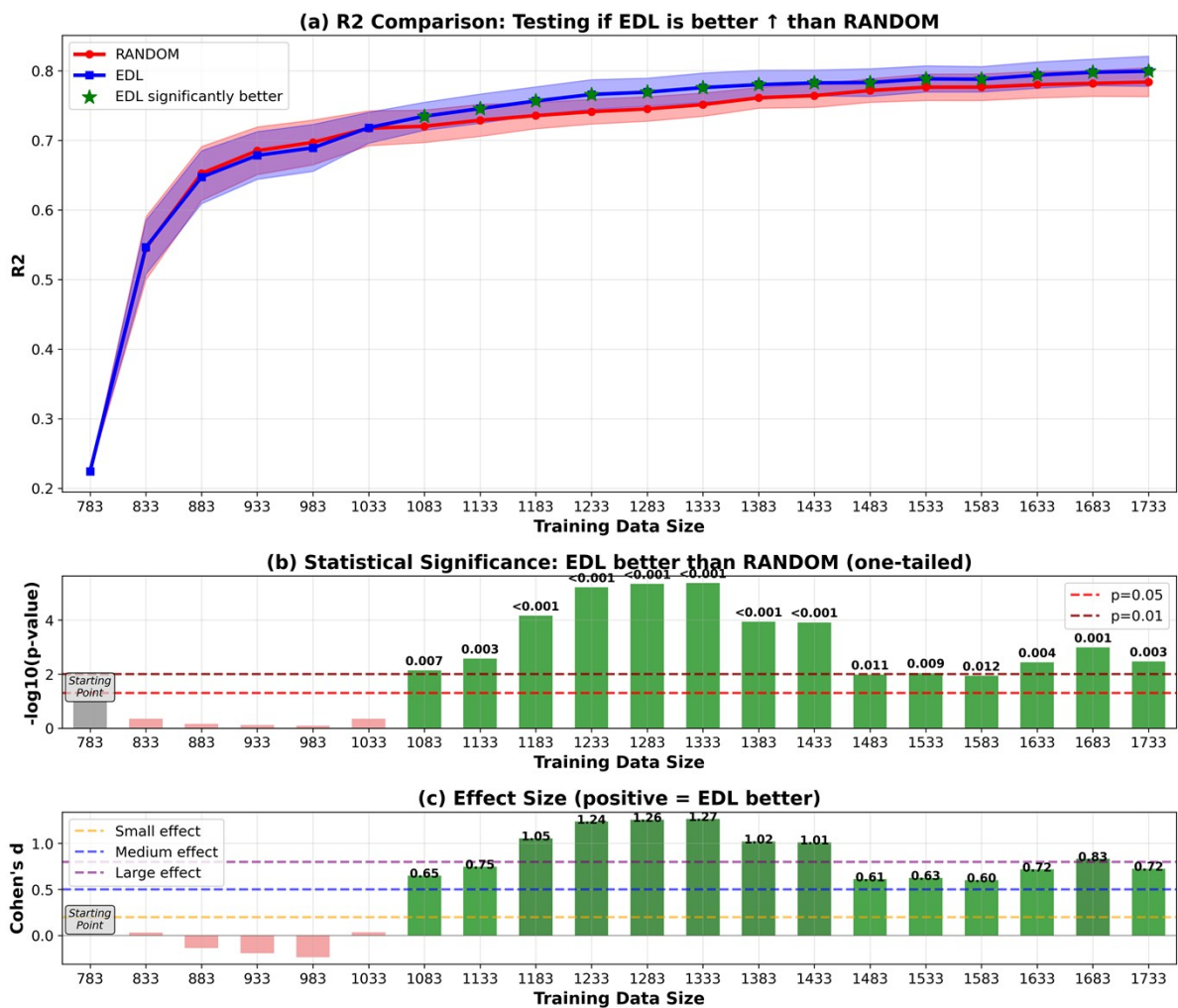


Figure A5. R² results of EDL compared with random sampling, starting with the CHO subset from SOMAS and generalizing to the PubChem dataset. Each step adding 50 samples.

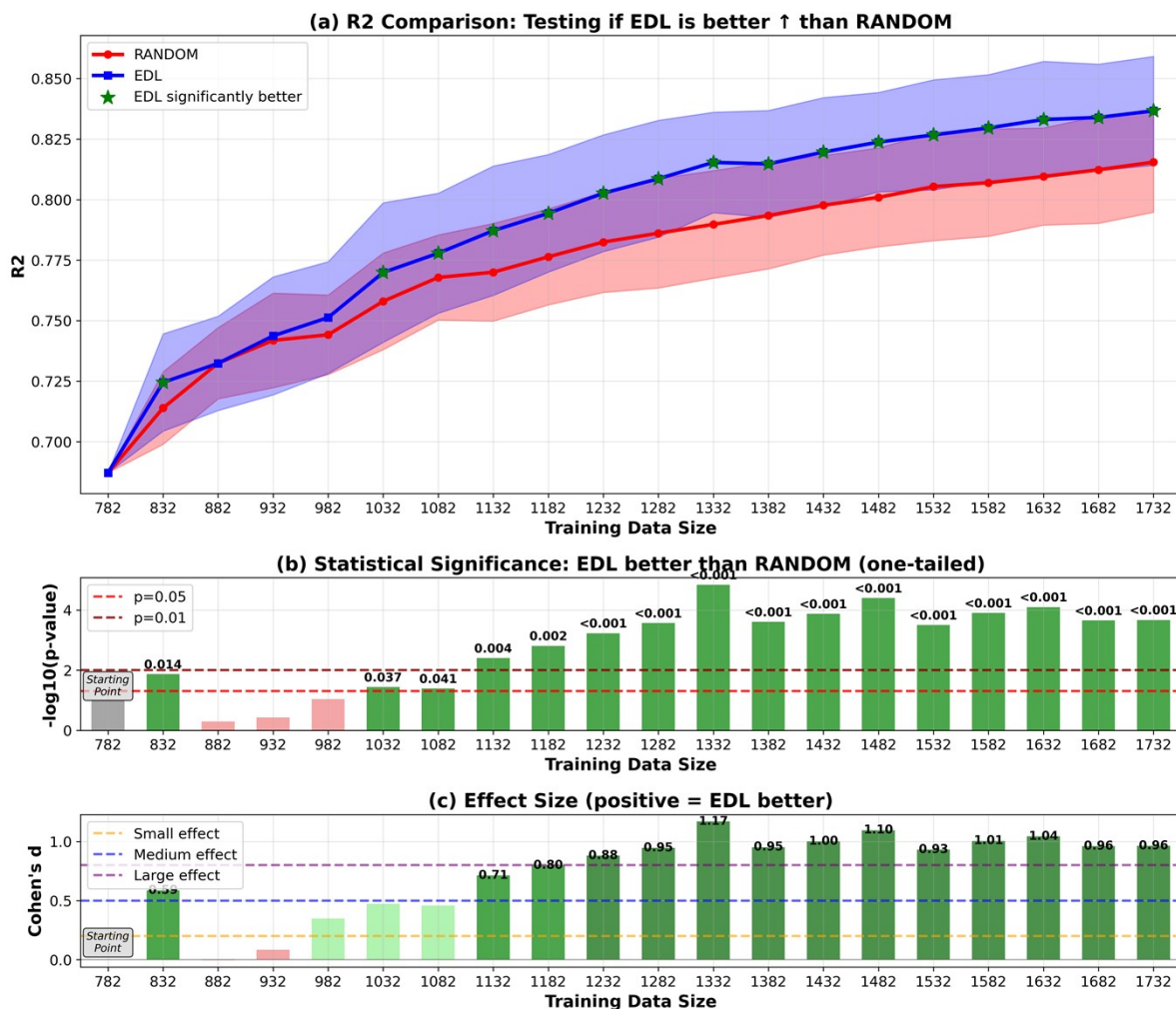


Figure A6. R² results of EDL compared with random sampling, starting with a matched-size random subset from SOMAS and generalizing to the PubChem dataset. Each iteration adds 50 samples.

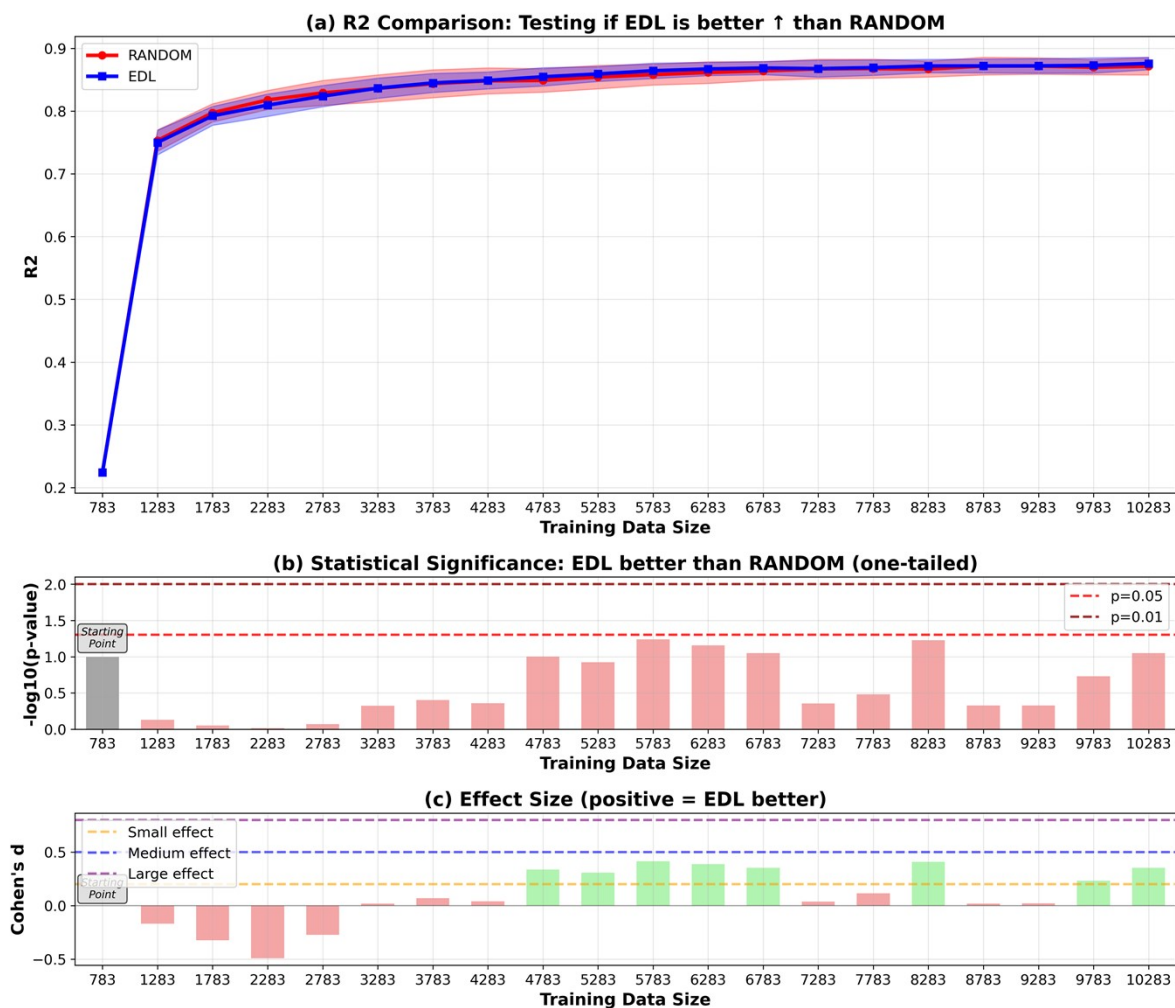


Figure A7. R² results of EDL compared with random sampling, starting with the CHO subset from SOMAS and generalizing to the PubChem dataset. Each iteration adds 500 samples.

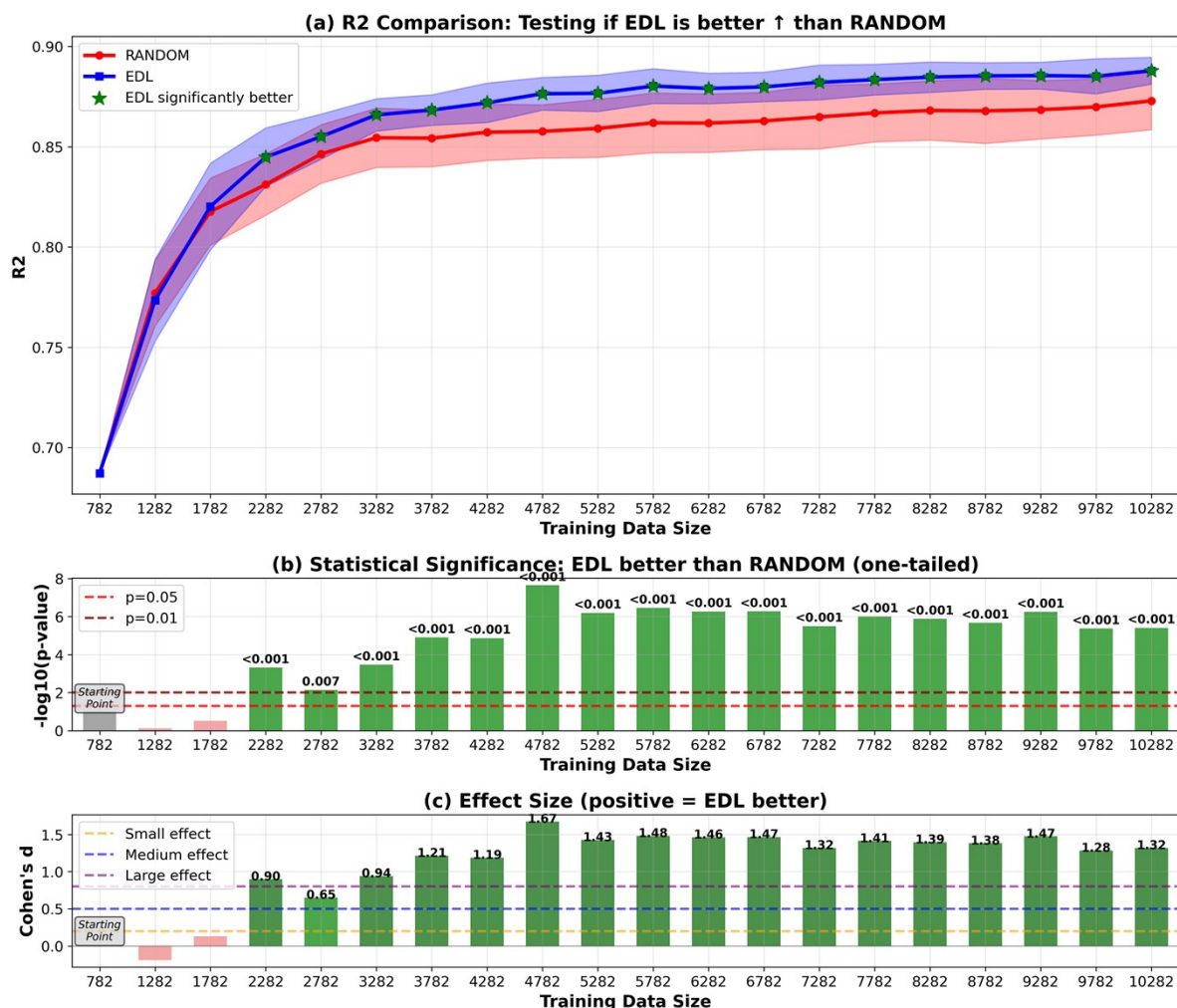


Figure A8. R² results of EDL compared with random sampling, starting with a matched-size random subset from SOMAS and generalizing to the PubChem dataset. Each iteration adds 500 samples.