

Supplementary Figures

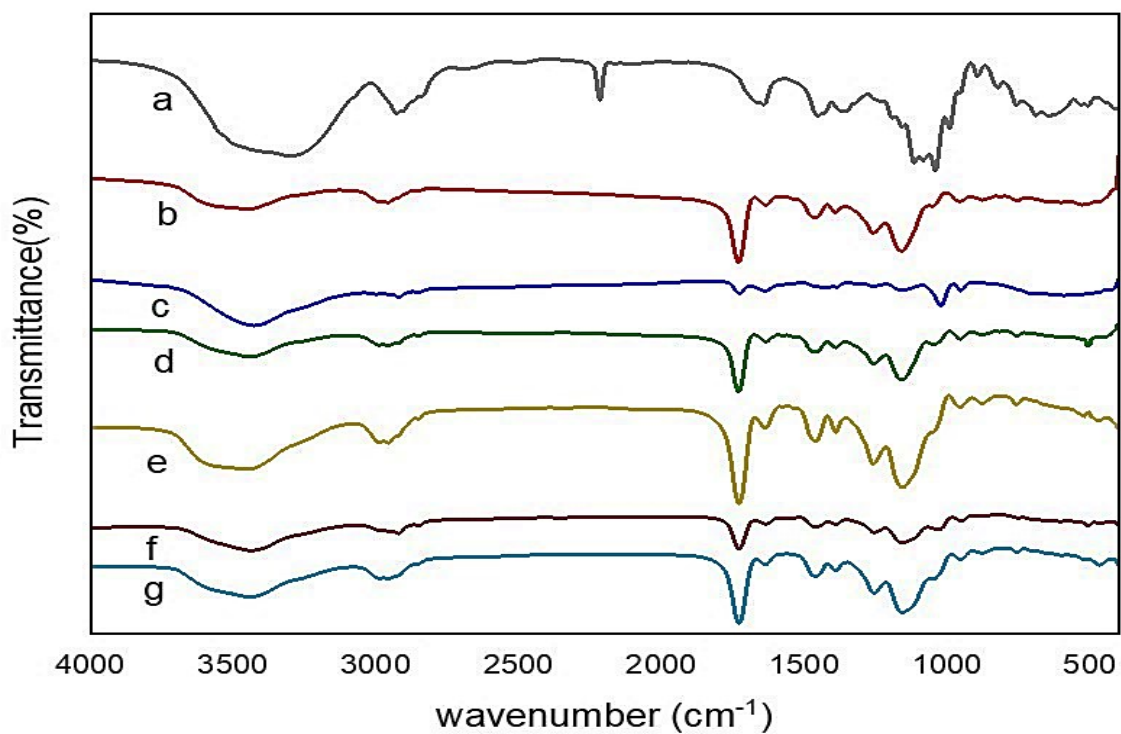


Fig S1: FTIR spectra of (a) SIMM, (b) MIP(B) un wash, (c) MIP (B)washed, (d) NIP (B), (e) MIP(S) un wash, (f) MIP(S) washed, and (g) NIP(S).

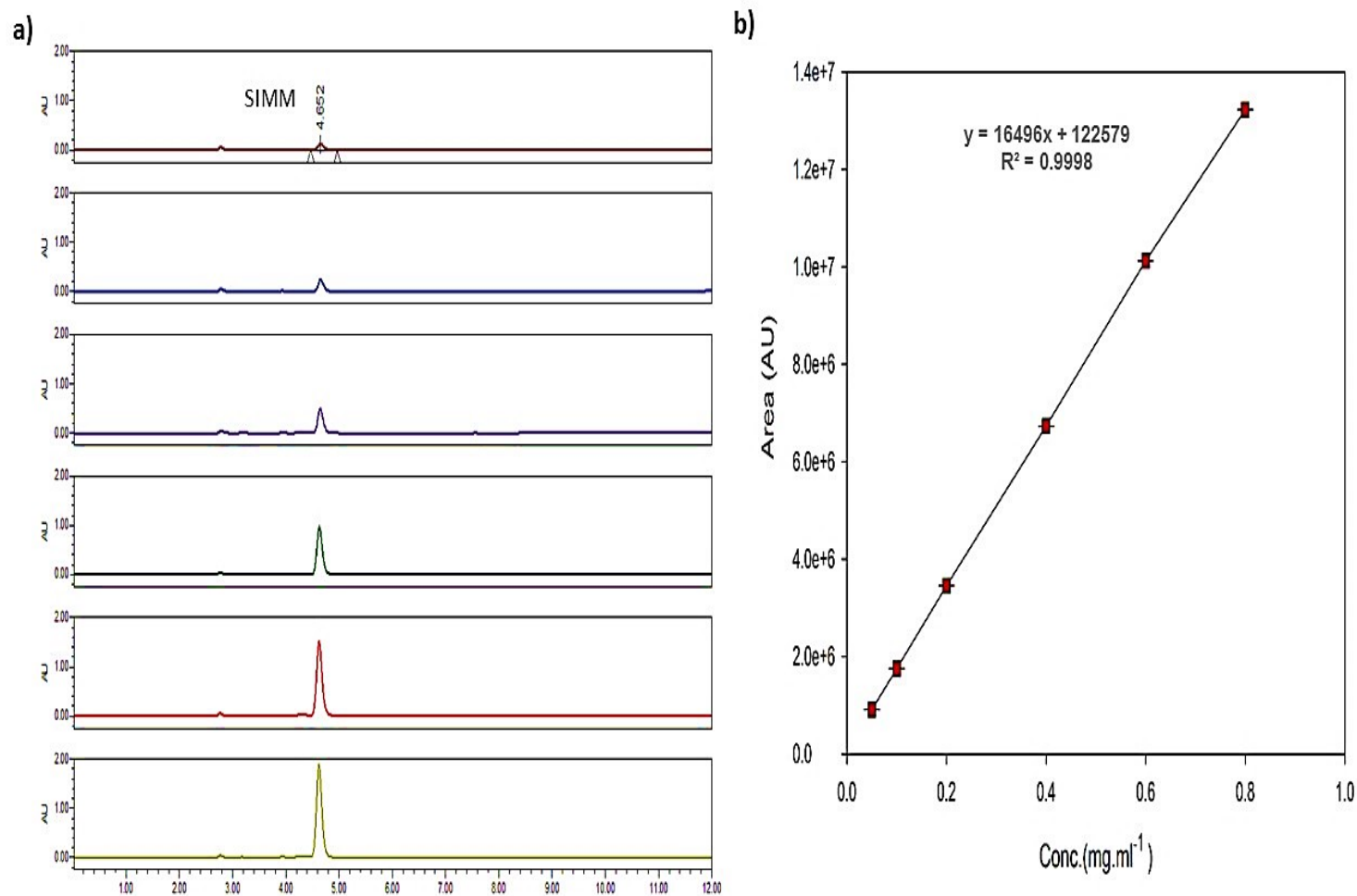


Fig S2: a) linearity chromatograms of SIMM, b) linearity graph plotted range conc of SIMM (0.05mg/ml to 0.8mg/ml on x axis and response area on y axis