

# **A Simple Approach to Fabricate High-Sensitive Lead (II) Ions Electrochemical Sensor Based on Plate-Shaped Cu-BTC and Particle-Shaped Fe-BTC**

Tuyet Nhung Pham <sup>a,1\*</sup>, Nguyen Le Nhat Trang<sup>a</sup>, Ong Van Hoang<sup>a, b</sup>, Tien Van Manh<sup>c</sup>, Nguyen  
Quang Hoa<sup>d</sup>, Vu Dinh Lam<sup>e</sup>, Manh-Huong Phan<sup>f</sup>, Anh-Tuan Le<sup>a,\*\*</sup>

<sup>a</sup>. Phenikaa University Nano Institute (PHENA), Phenikaa School of Engineering (PSE), Phenikaa  
University, Hanoi 12116, Vietnam

<sup>b</sup>. University of Transport Technology, Trieu Khuc, Thanh Xuan District, Hanoi, Viet Nam

<sup>c</sup>. Research group on Smart materials & Tech. Application (SM&A), University of Transport  
Technology, Trieu Khuc, Thanh Liet, Hanoi 100000, Vietnam

<sup>d</sup>. Faculty of Physics, VNU University of Science, Vietnam National University, Hanoi, Thanh  
Xuan, Hanoi, Vietnam

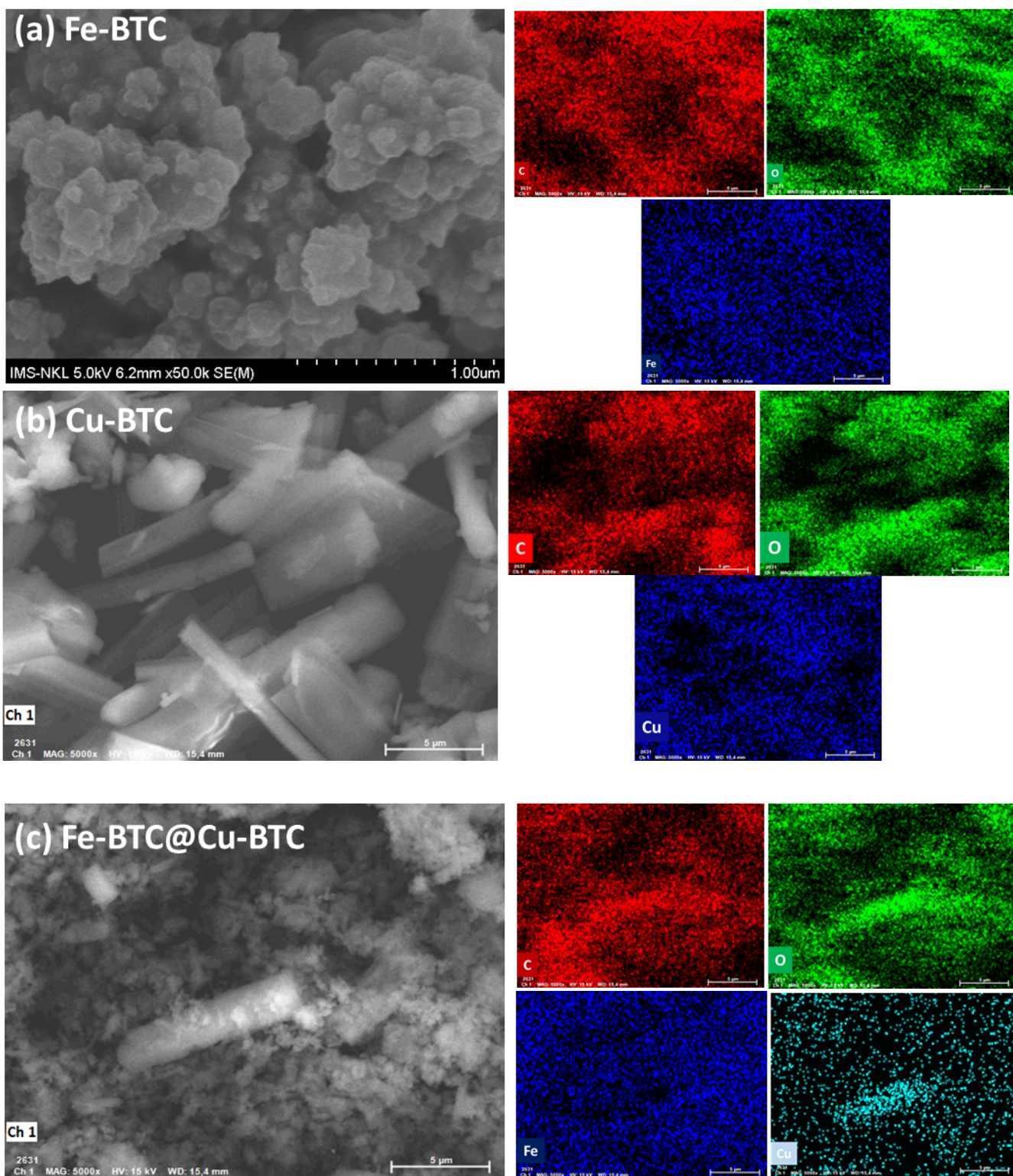
<sup>e</sup>. Graduate University of Science and Technology (GUST), Institute of Physics, Vietnam Academy  
of Science and Technology, Hanoi 10000, Vietnam

<sup>f</sup>. Center for Materials Innovation and Technology (CMIT), VinUniversity, Gia Lam district, Hanoi  
10000, Vietnam

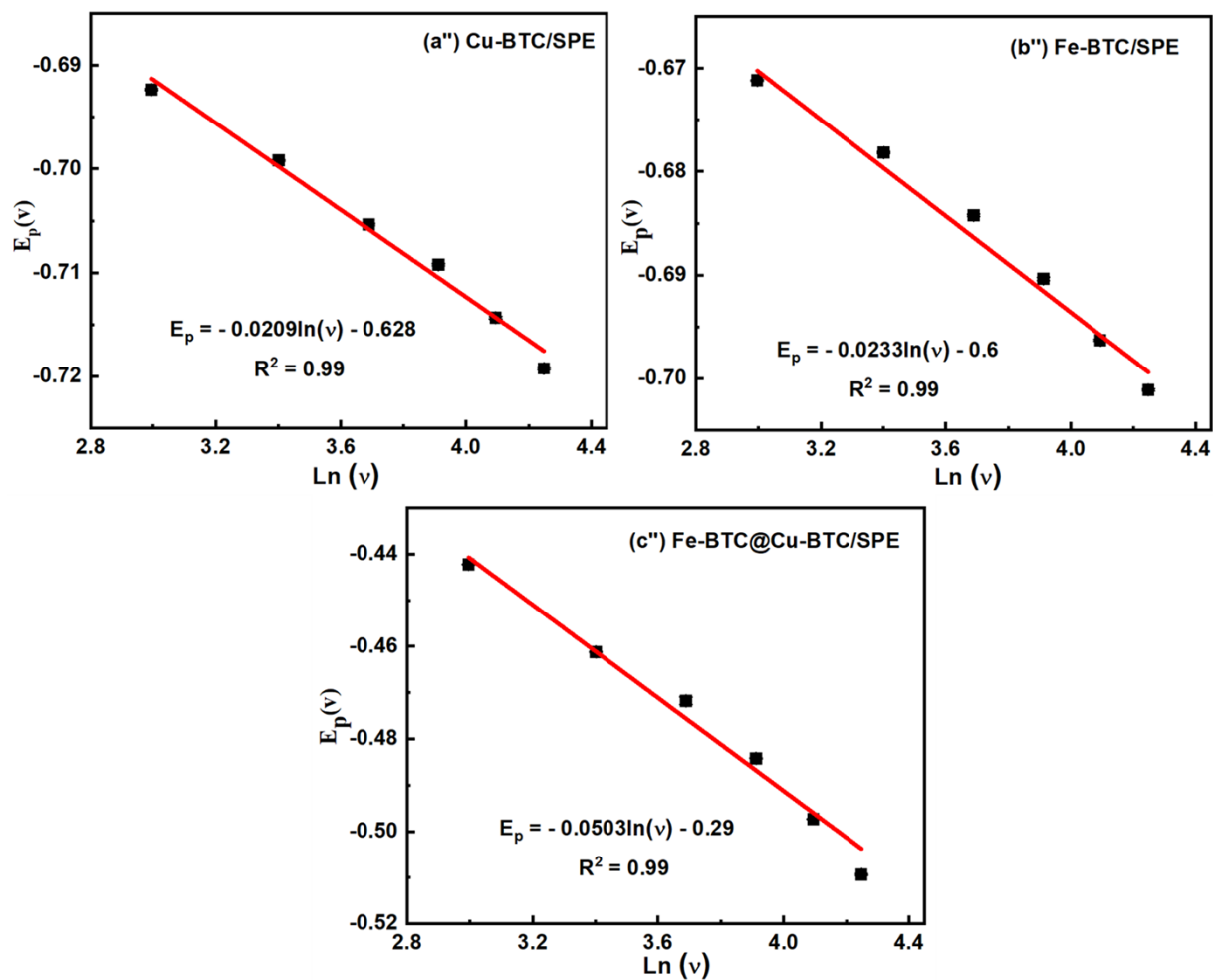
Corresponding authors:

\*[nhung.phamthituyet@phenikaa-uni.edu.vn](mailto:nhung.phamthituyet@phenikaa-uni.edu.vn) (T.N. Pham)

\*\*[tuan.leanh@phenikaa-uni.edu.vn](mailto:tuan.leanh@phenikaa-uni.edu.vn) (A.-T. Le)



**Figure S1.** SEM images and elemental distribution maps (EDS maps) of C, O, Cu, and Fe at the synthesized samples



**Figure S2.** The calibration plots between  $E_p$  and  $\ln(v)$  from CV curves of 10 ppm  $Pb^{2+}$  at the modified SPE in 0.1 M AcB buffer (pH 4) solution at different scan rates.