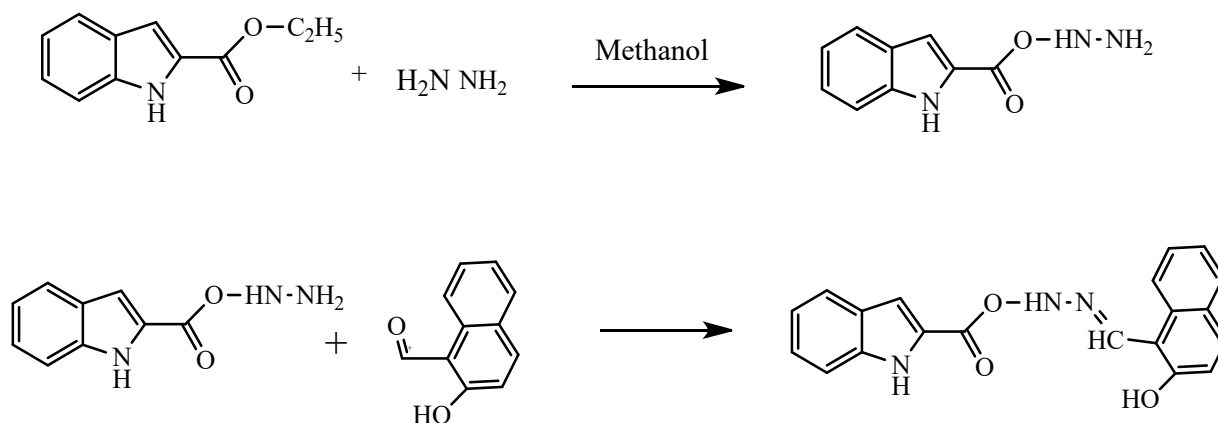
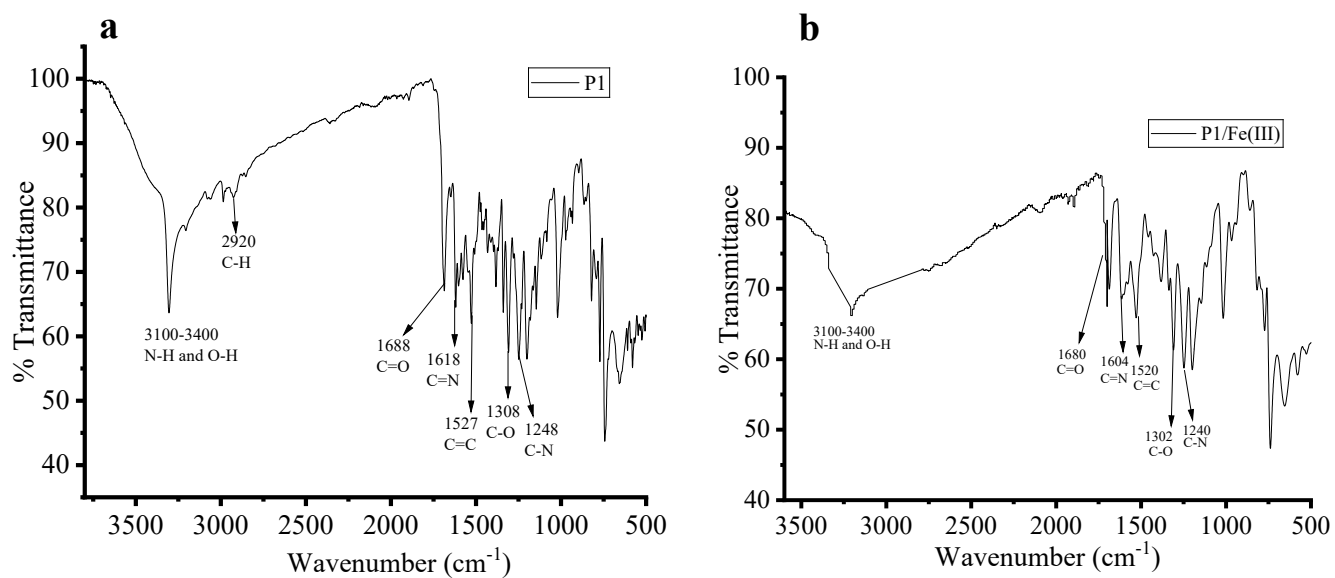


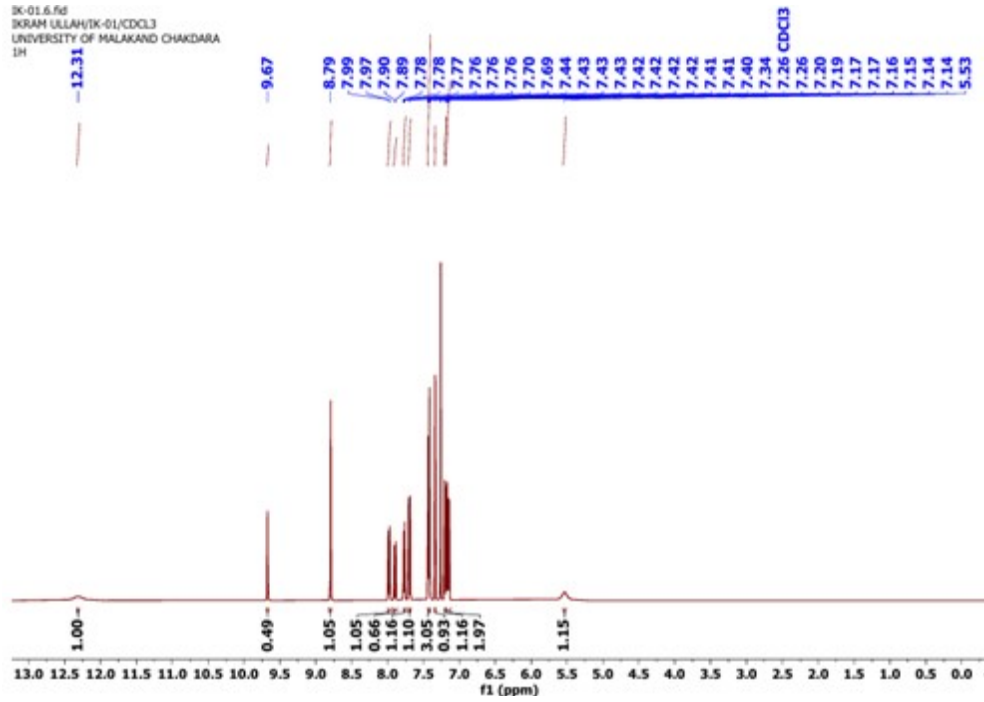
S. File 1. (Scheme 1) Synthesis of chemosensor P1.



S. File 2: FTIR spectra of the chemosensor P1 and P1/Fe(III)



S. file 3. ¹H NMR of the chemosensor P1



S. Table 1. Replicate measurements for the determination S.D, LOD and LOQ

F°	F	F°/F	Conc. Found ($\mu\text{g mL}^{-1}$)	S.D	LOD	LOQ
856.064	846.561	1.011225	0.449858	0.00885	0.084394	0.281315
856.064	843.223	1.015228	0.462583			
856.064	846.757	1.010991	0.449114			
856.064	844.192	1.014063	0.458878			
856.064	841.264	1.017593	0.470097			

S.D= standard deviation, LOD = limit of detection, LOQ= limit of quantification

S. Table 2. Application of the proposed method to the determination of Fe(III) in water samples

F°	F	F°/F	Conc. Taken ($\mu\text{g mL}^{-1}$)	Conc. Found ($\mu\text{g mL}^{-1}$)	% Recovery	Average % Recovery \pmSD
892.11	867.341	1.028557	0.5	0.50495	100.9901	99.36153 \pm 2.303117
892.11	871.683	1.023434		0.488665	97.73298	
892.11	756.015	1.180016	1.0	0.986384	98.63836	97.8971 \pm 1.048299
892.11	759.015	1.175352		0.971558	97.15584	

F°= Fluorescent intensity of the P1, F= Fluorescent intensity of P1 with Fe(III)

S. Table 3. Data obtained of replicate readings for the determination of SD, LOD and LOQ

F°	F'	F°/F'	Conc. Found ($\mu\text{g mL}^{-1}$)	S.D	LOD	LOQ
755.005	724.306	1.042384	0.446562	0.034762	0.121502	0.405006
755.005	705.003	1.070925	0.479814			
755.005	683.64	1.10439	0.518804			
755.005	674.793	1.118869	0.535674			
755.005	692.74	1.089882	0.501902			

S. Table 4. Data obtained for the determination of Cefotaxime sodium in serum and commercial formulations

Sample	F°	F'	F°/F'	Conc. Taken ($\mu\text{g mL}^{-1}$)	Conc. Found ($\mu\text{g mL}^{-1}$)	% Recovery	Average % Recovery \pmSD
Serum	893.113	606.815	1.471804	1.0	0.946877	94.68769	96.89068 \pm 1.908246
	893.113	595.476	1.49983		0.97953	97.95298	
	893.113	403.611	2.212806	2.0	1.810214	90.51068	95.16559 \pm

	893.113	376.425	2.372619		1.99641	99.8205	6.583035
Commercial Formulations	714.216	481.8	1.482391	1.0	0.959211	95.92113	96.65556± 1.038644
	714.216	477.737	1.494998		0.9739	97.38999	
	714.216	320.774	2.22654	2.0	1.826214	91.3107	92.39878± 1.538775
	714.216	315.481	2.263895		1.869737	93.48686	

S. Table 5. Raw data for the linear quenching of the FI of P1 with Fe(III)

WL	P1 15 µg/r	0.3 Fe(III)	0.8 Fe(III)	1.3 Fe(III)	1.8 Fe(III)	2.3 Fe(III)	3.0 Fe(III)
330	88.83054	97.65621	81.65962	89.74383	89.74383	55.0213	74.40275
331	89.56546	98.59557	82.69401	90.5364	90.5364	55.44611	75.13784
332	90.09642	99.30157	83.56084	91.09243	91.09243	55.76456	75.66296
333	90.46099	99.80909	84.28969	91.44053	91.44053	56.00403	75.99634
334	90.70293	100.1592	84.91528	91.61479	91.61479	56.19597	76.16044
335	90.87184	100.3989	85.47712	91.65456	91.65456	56.37566	76.18177
336	91.02267	100.5806	86.01921	91.60401	91.60401	56.58188	76.09067
337	91.21518	100.7614	86.58952	91.51173	91.51173	56.8565	75.92094
338	91.51331	101.003	87.23958	91.43013	91.43013	57.2441	75.70954
339	91.98447	101.3704	88.02381	91.4149	91.4149	57.79139	75.49614
340	92.69873	101.9315	88.99899	91.52432	91.52432	58.54677	75.32264
341	93.72802	102.7563	90.22349	91.81856	91.81856	59.55966	75.23273
342	95.14521	103.9157	91.75662	92.35892	92.35892	60.87996	75.27127
343	97.02322	105.481	93.65787	93.20704	93.20704	62.55738	75.48381
344	99.43405	107.5227	95.98613	94.42412	94.42412	64.6408	75.91594
345	102.4478	110.1098	98.79891	96.07009	96.07009	67.17763	76.61275
346	106.1319	113.3085	102.1516	98.20278	98.20278	70.21314	77.61819
347	110.5497	117.1817	106.0967	100.8772	100.8772	73.78982	78.97453
348	115.7603	121.7878	110.683	104.1446	104.1446	77.9468	80.72175
349	121.8171	127.18	115.9551	108.0519	108.0519	82.71922	82.89702
350	128.7671	133.4056	121.9525	112.6411	112.6411	88.13771	85.53416

351	136.6505	140.5051	128.709	117.9483	117.9483	94.22789	88.66316
352	145.4997	148.5115	136.2526	124.0034	124.0034	101.0099	92.30977
353	155.3387	157.4501	144.6043	130.8295	130.8295	108.4981	96.49509
354	166.183	167.3377	153.7783	138.4427	138.4427	116.7007	101.2353
355	178.0389	178.1821	163.7816	146.8516	146.8516	125.6194	106.5412
356	190.9035	189.9826	174.6134	135.2494	156.0569	135.2494	112.4184
357	204.7645	202.7288	186.2654	145.5794	166.0517	145.5794	118.8668
358	219.5998	216.4016	198.7217	156.5913	176.8212	156.5913	125.8807
359	235.3783	230.9725	211.9586	168.2605	188.343	168.2605	133.4489
360	252.0596	246.4043	225.9451	180.5559	200.5869	180.5559	141.5546
361	269.5946	262.6511	240.6429	193.4406	213.5154	193.4406	150.1756
362	287.9256	279.659	256.0068	253.1881	227.0841	206.8713	159.2848
363	306.9874	297.3664	271.9853	266.3294	241.2423	220.7999	168.8499
364	326.7076	315.7049	288.521	280.1993	255.9331	235.1727	178.8346
365	347.0072	334.5995	305.5508	294.734	271.0944	249.9321	189.1979
366	367.8017	353.9701	323.0073	309.8628	286.6592	265.0162	199.8958
367	389.0019	373.7317	340.8189	325.5096	302.5568	280.3601	210.8806
368	410.5148	393.7956	358.9107	341.5931	318.7134	295.8963	222.1025
369	432.2447	414.0705	377.2054	358.0286	335.0525	311.5552	233.5092
370	454.0939	434.463	395.6241	374.7284	351.4964	327.2662	245.0473
371	475.9641	454.8792	414.0867	391.603	367.9667	342.9583	256.6622
372	497.7571	475.2252	432.5136	408.5626	384.3849	358.5606	268.2994
373	519.3761	495.4083	450.8255	425.5172	400.6739	374.0033	279.9045
374	540.7263	515.3378	468.9449	442.3787	416.758	389.2183	291.4239
375	561.7165	534.9262	486.7966	459.0611	432.5646	404.1399	302.8056
376	582.259	554.0897	504.3086	475.4818	448.0239	418.7052	313.9997
377	602.2715	572.7494	521.4124	491.5622	463.0706	432.8552	324.9586
378	621.6771	590.8315	538.044	507.2289	477.6435	446.5349	335.6376
379	640.4051	608.2686	554.1444	522.414	491.6872	459.6938	345.9956
380	658.3919	624.9998	569.6599	537.0558	505.1513	472.2866	355.995
381	675.5812	640.9713	584.5427	551.0996	517.9919	484.2734	365.6022
382	691.9243	656.1367	598.7511	564.4976	530.1713	495.6199	374.788
383	707.3808	670.4574	612.2499	577.2097	541.6582	506.2978	383.5275
384	721.9181	683.9028	625.0101	589.2033	552.4282	516.2845	391.8003
385	735.5121	696.45	637.0098	600.4537	562.4634	525.5637	399.5908
386	748.1467	708.0843	648.2334	610.9438	571.7528	534.1252	406.8879
387	759.8141	718.7985	658.6719	620.664	580.2917	541.9645	413.6849
388	770.5139	728.5931	668.3226	629.6121	588.0817	549.0829	419.9797
389	780.2533	737.4758	677.1888	637.7929	595.1305	555.4874	425.7743
390	789.0465	745.4609	685.2798	645.2178	601.4514	561.1899	431.0748

391	796.9141	752.5691	692.6099	651.9041	607.0629	566.2073	435.8907
392	803.8827	758.8269	699.1987	657.8747	611.9882	570.5609	440.2355
393	809.984	764.2657	705.07	663.1573	616.2546	574.2761	444.1251
394	815.2545	768.9216	710.2515	667.784	619.8931	577.3816	447.5784
395	819.7343	772.8343	714.7743	671.7903	622.9378	579.9091	450.6167
396	823.4669	776.0465	718.6721	675.2142	625.4249	581.8927	453.2627
397	826.4979	778.6033	721.981	678.0963	627.3927	583.3685	455.541
398	828.8746	780.5513	724.7385	680.478	628.8804	584.3738	457.4769
399	830.6452	781.938	726.9828	682.4015	629.9278	584.9467	459.0963
400	831.8581	782.8112	728.7529	683.909	630.5747	585.1254	460.4253
401	832.5609	783.2177	730.0873	685.0418	630.8603	584.948	461.4899
402	832.8003	783.2036	731.0237	685.8399	630.8224	584.4517	462.3151
403	832.621	782.8131	731.5988	686.3412	630.4974	583.6724	462.9254
404	832.0654	782.088	731.8475	686.5816	629.9195	582.6445	463.3437
405	831.173	781.0675	731.8024	686.5936	629.1204	581.4002	463.5916
406	829.9803	779.7874	731.494	686.4069	628.1292	579.9694	463.6887
407	828.52	778.2804	730.9498	686.0474	626.9717	578.3793	463.6527
408	826.8211	776.5751	730.1944	685.5375	625.6706	576.6544	463.4993
409	824.9084	774.6963	729.2493	684.8955	624.245	574.816	463.2419
410	822.8029	772.6647	728.1325	684.1361	622.7108	572.8823	462.8914
411	820.5212	770.4969	726.8591	683.2696	621.0804	570.8684	462.4566
412	818.0758	768.2055	725.4405	682.3031	619.3625	568.7861	461.944
413	815.4755	765.7992	723.885	681.2395	617.5627	566.6443	461.3578
414	812.7249	763.2827	722.1977	680.0786	615.6836	564.4484	460.7001
415	809.8255	760.6573	720.381	678.8168	613.7245	562.2015	459.971
416	806.7751	757.921	718.4341	677.4478	611.6824	559.9036	459.1686
417	803.569	755.0688	716.3542	675.9626	609.5516	557.5525	458.2897
418	800.1996	752.0932	714.1358	674.3504	607.3245	555.1436	457.3293
419	796.6574	748.9844	711.7718	672.5984	604.9919	552.6705	456.2814
420	792.9312	745.7307	709.2535	670.6928	602.543	550.1253	455.139
421	789.0087	742.3193	706.571	668.6188	599.9663	547.4986	453.8945
422	784.8765	738.7362	703.7133	666.3614	597.2495	544.7803	452.5397
423	780.5211	734.9672	700.6693	663.9055	594.3803	541.9594	451.0661
424	775.9293	730.9979	697.4274	661.2365	591.3463	539.0249	449.4657
425	771.088	726.8142	693.9763	658.3407	588.1357	535.9657	447.7302
426	765.9855	722.4028	690.3053	655.2057	584.7376	532.7711	445.8523
427	760.6111	717.7514	686.4046	651.8205	581.1422	529.4308	443.8251
428	754.956	712.8494	682.2651	648.1761	577.341	525.9358	441.6427
429	749.013	707.6877	677.8795	644.2653	573.3272	522.2779	439.3002
430	742.7775	702.259	673.2419	640.0835	569.0956	518.4504	436.794

431	736.2468	696.5585	668.3481	635.6281	564.6432	514.448	434.1216
432	729.4211	690.5835	663.1957	630.8993	559.9688	510.267	431.2821
433	722.3029	684.3336	657.7845	625.8996	555.0736	505.9057	428.2758
434	714.8975	677.8111	652.1162	620.6342	549.9607	501.3639	425.1045
435	707.2128	671.0206	646.1945	615.1106	544.6354	496.6434	421.7714
436	699.2591	663.9692	640.0253	609.3386	539.1049	491.7478	418.2811
437	691.0492	656.6661	633.6164	603.3303	533.3786	486.6825	414.6394
438	682.5983	649.123	626.9775	597.0997	527.4675	481.4544	410.8535
439	673.9235	641.3535	620.1201	590.6626	521.3844	476.0724	406.9316
440	665.0439	633.3729	613.0572	584.0364	515.1433	470.5464	402.8828
441	655.9802	625.1984	605.8033	577.2397	508.7596	464.8881	398.7172
442	646.7541	616.8483	598.3743	570.2919	502.2498	459.1098	394.4454
443	637.3888	608.342	590.7869	563.2134	495.6309	453.2251	390.0788
444	627.9079	599.6999	583.0589	556.0246	488.9206	447.2483	385.6288
445	618.3353	590.9429	575.2083	548.7463	482.1367	441.1942	381.1072
446	608.6952	582.0918	567.2537	541.3988	475.2971	435.0776	376.5257
447	599.0115	573.1679	559.2137	534.002	468.4193	428.9139	371.8958
448	589.3074	564.1918	551.1068	526.5751	461.5204	422.7179	367.2287
449	579.6054	555.1835	542.9511	519.136	454.6167	416.5043	362.5352
450	569.9268	546.1625	534.7643	511.7016	447.7236	410.2873	357.8253
451	560.2916	537.1469	526.563	504.2873	440.8554	404.0803	353.1084
452	550.7183	528.1538	518.3632	496.9069	434.025	397.8957	348.393
453	541.2237	519.1988	510.1797	489.5723	427.244	391.7451	343.6866
454	531.8224	510.296	502.0259	482.2939	420.5225	385.6389	338.9958
455	522.5274	501.4578	493.9141	475.08	413.8689	379.5861	334.3259
456	513.3495	492.695	485.8552	467.9371	407.2901	373.5946	329.6815
457	504.2972	484.0166	477.8584	460.8698	400.7913	367.6709	325.0658
458	495.3773	475.4298	469.9317	453.8809	394.376	361.8199	320.481
459	486.594	466.94	462.0813	446.9713	388.0463	356.0453	315.9283
460	477.95	458.551	454.3123	440.1406	381.8025	350.3495	311.4079
461	469.4458	450.2651	446.628	433.3866	375.6439	344.7334	306.919
462	461.0801	442.0828	439.0307	426.7058	369.568	339.1967	302.4599
463	452.8502	434.0036	431.5211	420.0936	363.5716	333.7381	298.0284
464	444.7516	426.0255	424.0989	413.5443	357.6501	328.3549	293.6215
465	436.7787	418.1454	416.7628	407.0516	351.7984	323.0437	289.2356
466	428.9249	410.3595	409.5105	400.6085	346.0103	317.8004	284.8667
467	421.1825	402.6631	402.339	394.2076	340.2796	312.6198	280.5108
468	413.5435	395.0511	395.2445	387.8413	334.5994	307.4967	276.1633
469	405.999	387.518	388.223	381.5022	328.9628	302.4249	271.8199
470	398.5404	380.0581	381.2698	375.1829	323.3629	297.3986	267.4762

471	391.1586	372.6657	374.3804	368.8766	317.7931	292.4114	263.1282
472	383.8451	365.3353	367.55	362.577	312.247	287.4573	258.772
473	376.5914	358.0617	360.7739	356.2783	306.7188	282.5302	254.4043
474	369.3899	350.8401	354.0478	349.9759	301.2032	277.6245	250.0221
475	362.2334	343.6666	347.3674	343.6658	295.6959	272.735	245.6231
476	355.1157	336.5375	340.7292	337.3453	290.1932	267.8569	241.2057
477	348.0315	329.4501	334.13	331.0125	284.6924	262.9863	236.7689
478	340.9764	322.4027	327.5671	324.6668	279.1917	258.1196	232.3124
479	333.9472	315.3942	321.0386	318.3087	273.6904	253.2543	227.8367
480	326.9419	308.4245	314.5433	311.9397	268.1886	248.3885	223.343
481	319.9594	301.4945	308.0805	305.5624	262.6876	243.5211	218.8333
482	312.9998	294.6058	301.6504	299.1804	257.1895	238.652	214.3103
483	306.0644	287.7609	295.2538	292.7985	251.6975	233.7816	209.7774
484	299.1555	280.9631	288.8922	286.4219	246.2155	228.9115	205.2385
485	292.2763	274.2165	282.5678	280.0569	240.7483	224.0437	200.6983
486	285.431	267.5258	276.2832	273.7105	235.3012	219.1811	196.162
487	278.6246	260.8961	270.0418	267.3898	229.8804	214.3273	191.6349
488	271.8627	254.3331	263.8473	261.1029	224.4924	209.4864	187.1232
489	265.1515	247.8429	257.7039	254.8576	219.144	204.663	182.6329
490	258.4977	241.4317	251.6162	248.6623	213.8425	199.8622	178.1705
491	251.9085	235.1059	245.5888	242.5252	208.5953	195.0893	173.7425
492	245.3909	228.8718	239.6268	236.4545	203.4096	190.3502	169.3554
493	238.9523	222.7357	233.735	230.4581	198.2928	185.6506	165.0157
494	232.6001	216.7038	227.9187	224.5437	193.2521	180.9965	160.7298
495	226.3413	210.7819	222.1827	218.7185	188.2942	176.3938	156.5037
496	220.1829	204.9753	216.5319	212.9894	183.4257	171.8484	152.3434
497	214.1314	199.2892	210.9711	207.3624	178.6525	167.366	148.2542
498	208.1929	193.7279	205.5045	201.8433	173.9801	162.9521	144.2413
499	202.3731	188.2954	200.1363	196.437	169.4136	158.6118	140.3094
500	196.677	182.995	194.8702	191.1478	164.957	154.35	136.4625
501	191.109	177.8294	189.7096	185.9792	160.6141	150.1711	132.7043
502	185.6729	172.8006	184.6575	180.9342	156.3878	146.0791	129.0379
503	180.3718	167.9099	179.7163	176.0148	152.2803	142.0776	125.4658
504	175.2082	163.1581	174.8881	171.2228	148.293	138.1695	121.99
505	170.1837	158.5452	170.1746	166.5588	144.427	134.3574	118.612

506	165.2996	154.0708	165.5768	162.0232	140.6823	130.6434	115.3326
507	160.5562	149.7337	161.0955	157.6157	137.0584	127.029	112.1523
508	155.9535	145.5324	156.7311	153.3356	133.5543	123.5151	109.0708
509	151.4905	141.4647	152.4835	149.1815	130.1684	120.1025	106.0877
510	147.1662	137.5281	148.3521	145.1518	126.8986	116.7911	103.202
511	142.9788	133.7198	144.3361	141.2446	123.7423	113.5806	100.4121
512	138.9261	130.0365	140.4345	137.4576	120.6966	110.4704	97.71644
513	135.0056	126.4749	136.6457	133.7882	117.7582	107.4593	95.11288
514	131.2146	123.0312	132.9681	130.2339	114.9234	104.5459	92.59912
515	127.5498	119.7017	129.3998	126.7917	112.1886	101.7284	90.1726
516	124.008	116.4826	125.9387	123.4588	109.5498	99.00494	87.83058
517	120.5858	113.3698	122.5824	120.2323	107.0029	96.37324	85.57018
518	117.2795	110.3596	119.3287	117.109	104.5438	93.83093	83.38842
519	114.0856	107.448	116.1749	114.0862	102.1684	91.37544	81.28222
520	111.0004	104.6312	113.1185	111.1607	99.87262	89.0041	79.24848
521	108.02	101.9056	110.1568	108.3296	97.65231	86.71413	77.28408
522	105.141	99.26736	107.2869	105.5901	95.50351	84.50267	75.38591
523	102.3595	96.71316	104.5062	102.9391	93.42233	82.36682	73.55088
524	99.67206	94.2396	101.8118	100.3739	91.40501	80.30365	71.77597
525	97.07506	91.84343	99.20086	97.89161	89.44791	78.31022	70.05819
526	94.56501	89.52155	96.67052	95.48933	87.54751	76.38357	68.39465
527	92.13845	87.27097	94.21789	93.16422	85.70046	74.52075	66.78252
528	89.79199	85.0888	91.84008	90.91339	83.90352	72.71885	65.21905
529	87.52229	82.97225	89.53419	88.73393	82.15361	70.97496	63.70159
530	85.32603	80.91862	87.29729	86.62285	80.44777	69.28622	62.22757
531	83.19992	78.92524	85.12646	84.57711	78.78315	67.64978	60.7945
532	81.14071	76.98952	83.01874	82.5936	77.15703	66.06284	59.39998
533	79.14514	75.10888	80.97121	80.66912	75.5668	64.52263	58.0417
534	77.20996	73.28078	78.9809	78.8004	74.00992	63.02643	56.7174
535	75.33195	71.50268	77.04486	76.98409	72.48397	61.57154	55.42494
536	73.50785	69.77203	75.16016	75.21678	70.9866	60.15534	54.16221
537	71.73442	68.0863	73.32385	73.49499	69.51554	58.77524	52.92722
538	70.00843	66.44294	71.53304	71.81521	68.06862	57.42869	51.71803
539	68.32667	64.8394	69.78486	70.17393	66.64373	56.11325	50.53278
540	66.68593	63.27314	68.07649	68.56764	65.23884	54.82649	49.3697

S. Table 6. Raw data for the linear quenching of the FI of P2 with CFT

WI	P1 15 µg/r	2.0 Fe(III)	0.5 CFT	1.0 CFT	2.0 CFT	3.0 CFT
340	71.47825	47.40664	55.59996	30.42687	21.8501	15.79603
341	69.43437	46.18135	53.4638	29.5978	21.46131	15.50192
342	67.50039	45.02919	51.34534	28.82466	21.1356	15.25723
343	65.79873	44.0275	49.33076	28.16053	20.91133	15.0904
344	64.45539	43.25575	47.50829	27.66015	20.828	15.03073
345	63.59767	42.79404	45.96648	27.37889	20.92546	15.10783
346	63.35166	42.72156	44.7925	27.37171	21.24319	15.3511
347	63.83985	43.11508	44.07043	27.69211	21.81956	15.78919
348	65.17872	44.0474	43.87962	28.39113	22.69105	16.4494
349	67.47637	45.58595	44.29312	29.51627	23.89156	17.35718
350	70.83041	47.79144	45.37624	31.11061	25.4517	18.53565
351	75.32591	50.71664	47.18529	33.21192	27.39821	20.00506
352	81.0337	54.40532	49.76649	35.8519	29.75339	21.78245
353	88.00888	58.89137	53.15511	39.05554	32.53462	23.88127
354	96.28964	64.19813	57.37479	42.84056	35.75404	26.31109
355	105.8964	70.33789	62.43719	47.21712	39.4182	29.07736
356	116.8316	77.31167	68.3418	52.18751	43.52799	32.18134
357	129.0789	85.10918	75.07604	57.74611	48.0785	35.61997
358	142.6044	93.70903	82.61565	63.87949	53.05914	39.38597
359	157.3562	103.0791	90.9252	70.56662	58.45376	43.46786
360	173.2662	113.1773	99.95891	77.77926	64.24097	47.85023
361	190.2509	123.9521	109.6617	85.48247	70.39444	52.51393
362	208.2128	135.3438	119.9701	93.63523	76.88342	57.43642
363	227.0424	147.2855	130.8139	102.1912	83.67319	62.59216
364	246.6204	159.7044	142.1173	111.0996	90.72574	67.95299
365	266.8191	172.5229	153.8004	120.306	98.00033	73.48867
366	287.5053	185.6603	165.7807	129.7533	105.4542	79.1673
367	308.5424	199.0339	177.9747	139.3829	113.0434	84.95591
368	329.7925	212.5607	190.2993	149.1351	120.723	90.82092
369	351.1188	226.1584	202.6731	158.951	128.4487	96.72869
370	372.3878	239.7469	215.0178	168.7726	136.1764	102.646
371	393.4712	253.2495	227.2594	178.544	143.8637	108.5407
372	414.2478	266.5936	239.3293	188.2122	151.4701	114.3817
373	434.6051	279.7124	251.1648	197.7279	158.9575	120.14
374	454.441	292.5449	262.7103	207.0457	166.2908	125.7885
375	473.6643	305.0369	273.9175	216.1253	173.4382	131.3027

376	492.1964	317.1417	284.746	224.9313	180.3717	136.6607
377	509.971	328.8196	295.163	233.4337	187.0668	141.8434
378	526.9354	340.039	305.1436	241.6082	193.5034	146.8349
379	543.0495	350.7757	314.6706	249.4357	199.6651	151.6221
380	558.2864	361.0128	323.734	256.9031	205.5398	156.1953
381	572.6316	370.7407	332.3307	264.0023	211.1192	160.5474
382	586.0823	379.9562	340.4638	270.7303	216.3988	164.6745
383	598.6464	388.6624	348.1417	277.0889	221.3778	168.5754
384	610.3418	396.8677	355.3777	283.084	226.0587	172.2515
385	621.1949	404.585	362.1891	288.7255	230.4467	175.7065
386	631.2395	411.8315	368.5962	294.0262	234.55	178.9462
387	640.5154	418.6274	374.6215	299.0019	238.3789	181.9783
388	649.0669	424.9953	380.2893	303.6705	241.9458	184.8118
389	656.9418	430.9595	385.6243	308.0511	245.2644	187.4573
390	664.1897	436.5453	390.6514	312.164	248.3496	189.9261
391	670.861	441.7781	395.395	316.0301	251.2172	192.2303
392	677.0056	446.683	399.8782	319.6699	253.8832	194.3821
393	682.6719	451.2842	404.1226	323.1035	256.364	196.3942
394	687.906	455.6046	408.1479	326.3501	258.6754	198.2789
395	692.7508	459.6653	411.9717	329.4277	260.8331	200.0482
396	697.2452	463.4854	415.609	332.3526	262.8518	201.7138
397	701.4241	467.0818	419.0725	335.1394	264.7455	203.2863
398	705.3176	470.4691	422.3727	337.8007	266.5271	204.7757
399	708.9511	473.6594	425.5174	340.3471	268.2083	206.191
400	712.3452	476.6626	428.5125	342.7872	269.7995	207.5402
401	715.5158	479.4864	431.3617	345.1275	271.3099	208.8303
402	718.4741	482.1361	434.0671	347.3724	272.7471	210.0668
403	721.2274	484.6153	436.6291	349.5246	274.1177	211.2546
404	723.7788	486.926	439.0471	351.5848	275.4267	212.3972
405	726.1282	489.0685	441.3191	353.5524	276.6779	213.4969

406	728.2724	491.0418	443.4428	355.4251	277.8741	214.5553
407	730.2059	492.8443	445.4152	357.1997	279.0165	215.5728
408	731.9212	494.4732	447.233	358.8719	280.1057	216.5491
409	733.4092	495.9255	448.8928	360.4364	281.141	217.4829
410	734.6601	497.1977	450.3914	361.8876	282.121	218.3722
411	735.6634	498.2863	451.7254	363.2193	283.0435	219.2146
412	736.4085	499.1874	452.892	364.4254	283.9054	220.0068
413	736.885	499.8977	453.8884	365.4993	284.7033	220.7454
414	737.083	500.4138	454.712	366.4348	285.4332	221.4264
415	736.9933	500.7326	455.3607	367.2258	286.0904	222.0456
416	736.6079	500.8512	455.8322	367.8665	286.6702	222.5987
417	735.9194	500.7671	456.1246	368.3517	287.1675	223.0813
418	734.922	500.478	456.2359	368.6762	287.5771	223.4888
419	733.6107	499.9819	456.1642	368.8359	287.8937	223.8168
420	731.9819	499.277	455.9073	368.8267	288.1118	224.0611
421	730.0329	498.3616	455.463	368.6455	288.2262	224.2177
422	727.7623	497.2345	454.829	368.2894	288.2317	224.2827
423	725.1695	495.8943	454.0026	367.7563	288.1234	224.2526
424	722.2547	494.3398	452.9811	367.0447	287.8965	224.1243
425	719.0192	492.5701	451.7616	366.1536	287.5468	223.8953
426	715.4647	490.5843	450.3411	365.0826	287.0704	223.5632
427	711.5938	488.3818	448.7167	363.8318	286.4639	223.1263
428	707.4096	485.9622	446.8856	362.4021	285.7244	222.5836
429	702.9156	483.3253	444.8452	360.7946	284.8497	221.9343
430	698.116	480.4716	442.5935	359.0114	283.8382	221.1785
431	693.0154	477.4018	440.1289	357.0549	282.6891	220.3168
432	687.6191	474.1172	437.4507	354.9281	281.4023	219.3503
433	681.9328	470.6199	434.559	352.6349	279.9785	218.2808
434	675.9627	466.9127	431.4551	350.1794	278.4191	217.1106
435	669.7161	462.9992	428.1413	347.5666	276.7265	215.8426
436	663.2006	458.8843	424.6216	344.802	274.9037	214.4801
437	656.4247	454.5735	420.9009	341.8919	272.9545	213.0272
438	649.3979	450.0737	416.9861	338.8429	270.8836	211.488
439	642.1306	445.3928	412.8852	335.6624	268.6961	209.8673
440	634.6339	440.5399	408.6078	332.3584	266.3981	208.1701

441	626.9201	435.5252	404.1649	328.9392	263.9958	206.4017
442	619.0024	430.3599	399.569	325.4138	261.4962	204.5675
443	610.8951	425.0563	394.8335	321.7915	258.9066	202.6731
444	602.6133	419.6278	389.973	318.082	256.2345	200.7242
445	594.1728	414.0881	385.0029	314.2951	253.4876	198.7262
446	585.5905	408.452	379.9391	310.4409	250.6735	196.6846
447	576.8836	402.7345	374.7981	306.5295	247.8	194.6047
448	568.0702	396.951	369.5961	302.5709	244.8746	192.4914
449	559.1683	391.1169	364.3496	298.5752	241.9045	190.3495
450	550.1964	385.2476	359.0743	294.5518	238.8966	188.1833
451	541.1729	379.3581	353.7853	290.5101	235.8572	185.9965
452	532.1159	373.4628	348.4967	286.4587	232.7923	183.7928
453	523.0432	367.5755	343.2218	282.4058	229.7072	181.5749
454	513.9718	361.7088	337.9719	278.3589	226.6064	179.3455
455	504.9181	355.8746	332.7574	274.3245	223.494	177.1064
456	495.8974	350.0833	327.5868	270.3084	220.3733	174.8591
457	486.9239	344.3439	322.4666	266.3155	217.2468	172.6047
458	478.0103	338.6641	317.402	262.3498	214.1165	170.3436
459	469.1682	333.0499	312.3961	258.414	210.9836	168.076
460	460.4074	327.506	307.4504	254.5102	207.8489	165.8016
461	451.7363	322.0353	302.5646	250.6393	204.7125	163.5199
462	443.1614	316.6391	297.7368	246.8012	201.574	161.2301
463	434.6878	311.3176	292.9639	242.9951	198.4329	158.9311
464	426.319	306.0691	288.2414	239.2192	195.2879	156.6217
465	418.0568	300.891	283.5638	235.4709	192.1381	154.3007
466	409.9015	295.7795	278.9248	231.7472	188.9819	151.9669
467	401.8521	290.7297	274.3173	228.0442	185.8179	149.6191
468	393.9064	285.7359	269.7341	224.3578	182.645	147.2562
469	386.0609	280.7919	265.1679	220.6835	179.4618	144.8773
470	378.3115	275.8909	260.6111	217.0167	176.2673	142.4816
471	370.6532	271.0261	256.0569	213.3525	173.061	140.0688
472	363.0803	266.1903	251.4988	209.6863	169.8423	137.6387
473	355.5869	261.3768	246.9309	206.0136	166.6115	135.1915
474	348.167	256.579	242.3482	202.3303	163.3688	132.7278
475	340.8146	251.7907	237.7469	198.6328	160.1153	130.2483

476	333.5238	247.0066	233.124	194.9178	156.8523	127.7544
477	326.2892	242.2221	228.4778	191.1829	153.5816	125.2477
478	319.1061	237.4331	223.8078	187.4262	150.3056	122.73
479	311.9701	232.637	219.1147	183.6467	147.0269	120.2036
480	304.8781	227.8319	214.4002	179.8442	143.7487	117.6712
481	297.8275	223.0171	209.6675	176.0195	140.4744	115.1356
482	290.817	218.1927	204.9205	172.1739	137.2078	112.5998
483	283.8462	213.3603	200.1645	168.31	133.953	110.0672
484	276.9158	208.5222	195.4052	164.4309	130.7142	107.5411
485	270.0275	203.682	190.6494	160.5408	127.4958	105.0253
486	263.1842	198.8439	185.9044	156.6444	124.3022	102.5234
487	256.3898	194.0131	181.1781	152.7473	121.1378	100.039
488	249.6489	189.1957	176.4786	148.8556	118.0072	97.57593
489	242.9672	184.3982	171.8143	144.9758	114.9146	95.13787
490	236.351	179.6277	167.1937	141.115	111.8641	92.72843
491	229.8072	174.8917	162.6249	137.2807	108.8598	90.3511
492	223.3433	170.198	158.1163	133.4803	105.9052	88.00925
493	216.967	165.5544	153.6757	129.7214	103.0039	85.70605
494	210.6862	160.9688	149.3104	126.0117	100.1589	83.44448
495	204.5089	156.4489	145.0273	122.3586	97.37299	81.22731
496	198.4429	152.0022	140.8328	118.7692	94.64849	79.05702
497	192.4957	147.6358	136.7323	115.2503	91.98741	76.93585
498	186.6745	143.3563	132.731	111.8082	89.39138	74.86576
499	180.9857	139.1697	128.8328	108.4487	86.86162	72.84839
500	175.4354	135.0815	125.0411	105.1768	84.39899	70.8851
501	170.0287	131.0963	121.3587	101.997	82.00395	68.97694
502	164.7697	127.2181	117.7872	98.91286	79.67665	67.12462
503	159.6618	123.45	114.3278	95.92723	77.41688	65.32858
504	154.7075	119.7943	110.9807	93.04211	75.22412	63.58893
505	149.908	116.2526	107.7455	90.25867	73.09758	61.90549
506	145.2638	112.8255	104.6212	87.57728	71.0362	60.27779
507	140.7742	109.5129	101.6062	84.99749	69.0387	58.70509
508	136.4377	106.314	98.69814	82.51809	67.10362	57.1864
509	132.2519	103.2273	95.89438	80.13715	65.22933	55.72048
510	128.2134	100.2507	93.19176	77.8521	63.41406	54.3059

511	124.3184	97.38131	90.58677	75.65978	61.65597	52.94101
512	120.5623	94.61607	88.07561	73.55653	59.95314	51.62403
513	116.9399	91.95132	85.65423	71.53826	58.30362	50.35302
514	113.4458	89.38312	83.31844	69.60056	56.70546	49.12594
515	110.0742	86.90729	81.06395	67.73878	55.15672	47.94067
516	106.8192	84.51948	78.88641	65.94812	53.6555	46.79506
517	103.6748	82.21528	76.78152	64.22374	52.19997	45.68693
518	100.6352	79.99024	74.74503	62.56081	50.78839	44.6141
519	97.69473	77.84002	72.77281	60.95461	49.41907	43.57445
520	94.84785	75.76034	70.86089	59.4006	48.09047	42.5659
521	92.08945	73.74713	69.00551	57.8945	46.8011	41.58648
522	89.41481	71.79653	67.20311	56.43229	45.54962	40.63428
523	86.81962	69.90489	65.45039	55.01032	44.33477	39.70757
524	84.30002	68.06885	63.74429	53.62527	43.15538	38.80469
525	81.85258	66.2853	62.08204	52.27423	42.01038	37.92417
526	79.47435	64.55141	60.4611	50.95466	40.89877	37.06466
527	77.16278	62.8646	58.87923	49.66442	39.81961	36.22495
528	74.91568	61.22255	57.33441	48.40173	38.77198	35.40399
529	72.73119	59.62314	55.82487	47.16514	37.75503	34.60086
530	70.60773	58.06445	54.34904	45.95354	36.76789	33.81476
531	68.54391	56.54472	52.90558	44.76609	35.80968	33.04502
532	66.53844	55.06232	51.49329	43.60216	34.87951	32.29105
533	64.59013	53.61572	50.11114	42.46133	33.97645	31.55235
534	62.69777	52.20343	48.7582	41.34333	33.09952	30.8285
535	60.86009	50.82404	47.43368	40.24797	32.24769	30.11913
536	59.0757	49.47613	46.13685	39.17514	31.41985	29.42388
537	57.34307	48.15828	44.86706	38.12472	30.61485	28.74245
538	55.66049	46.86906	43.6237	37.0966	29.83147	28.07452
539	54.02608	45.60706	42.40623	36.09062	29.06845	27.41978
540	52.43776	44.37082	41.21412	35.10656	28.32449	26.77789

S. Table 7. Raw data for the determination of the interference effect of a common excipient on CFT

WL	P2	CFT	CNa	Cef	LIN	F acid	galactos	sorbital	gum
340	20.27341	9.40277	38.37012	35.09201	13.0542	13.76033	13.39837	17.6529	29.41584
341	20.29573	9.36215	32.74382	29.63019	12.88365	13.60635	13.30227	17.47771	29.66547
342	20.58627	9.34708	27.3787	24.64406	12.91986	13.65869	13.4072	17.5536	30.23288
343	21.20067	9.35867	22.88462	20.27692	13.21369	13.96704	13.76007	17.93151	31.17618
344	22.19718	9.39852	19.44562	16.78517	13.81903	14.58405	14.41072	18.66499	32.5554
345	23.63573	9.46884	17.55306	14.7984	14.79197	15.56452	15.41122	19.80934	34.4314
346	25.5769	9.57253	17.12143	14.05255	16.18987	16.96445	16.81501	21.42061	36.86483
347	28.08082	9.71331	17.66088	14.44791	18.07028	18.84004	18.67598	23.55463	39.91495
348	31.20598	9.89567	18.93788	15.59038	20.48983	21.24662	21.04749	26.26586	43.63847
349	35.00808	10.12487	20.80057	17.17942	23.50311	24.23754	23.98134	29.60632	48.0883
350	39.53877	10.40686	22.93522	19.08671	27.16145	27.86299	27.5267	33.62441	53.31243
351	44.84452	10.74814	25.37187	21.47886	31.51179	32.16894	31.729	38.36387	59.35272
352	50.96547	11.1555	27.97009	24.02302	36.59557	37.19597	36.62898	43.86265	66.2439
353	57.9344	11.63584	30.61802	26.80985	42.44761	42.97834	42.26159	50.15199	74.01258
354	65.77576	12.19585	34.25976	30.36491	49.09522	49.54295	48.65512	57.25544	82.67639
355	74.50488	12.8417	39.31246	34.72427	56.55729	56.90857	55.83035	65.18819	92.24331
356	84.12731	13.57871	45.78256	40.51086	64.84361	65.08514	63.79984	73.95635	102.7111
357	94.63829	14.41107	53.73144	47.68289	73.95431	74.0732	72.56734	83.55655	114.0669
358	106.0225	15.34152	63.23505	56.25918	83.87948	83.86354	82.12735	93.97555	126.2873
359	118.2539	16.37113	74.11513	66.40692	94.59895	94.437	92.46487	105.1902	139.338
360	131.2958	17.49913	86.87947	78.38134	106.0823	105.7645	103.5553	117.1675	153.1743
361	145.1013	18.72279	101.315	91.707	118.2892	117.807	115.3645	129.8648	167.7416
362	159.6134	20.03741	117.7678	106.3357	131.1695	130.5164	127.8491	143.2302	182.9756
363	174.7664	21.4364	135.4088	122.5307	144.6641	143.8354	140.957	157.2034	198.8036
364	190.4859	22.91141	153.9269	139.6294	158.7056	157.6988	154.6278	171.7161	215.1453
365	206.6904	24.45259	173.511	157.9322	173.2191	172.0341	168.7938	186.6935	231.9137
366	223.2923	26.04891	193.9451	177.3925	188.1238	186.7628	183.3808	202.0548	249.0166
367	240.1994	27.68851	214.9975	197.2523	203.3333	201.801	198.3093	217.7146	266.3578
368	257.3158	29.35915	236.596	217.3853	218.7577	217.0615	213.4953	233.5842	283.8388
369	274.5437	31.04862	257.8943	238.0114	234.3047	232.4543	228.852	249.573	301.3596
370	291.785	32.74521	279.5921	258.3133	249.8809	247.8884	244.2909	265.5898	318.8209
371	308.9423	34.43808	300.7643	278.2326	265.3933	263.2731	259.723	281.5439	336.1252
372	325.9208	36.1177	321.3977	297.4132	280.7507	278.5195	275.0604	297.3468	353.178
373	342.6296	37.77611	340.7943	315.9304	295.8652	293.5414	290.2172	312.9132	369.8895
374	358.9826	39.40715	359.2803	333.215	310.653	308.2571	305.1114	328.1624	386.1757
375	374.9001	41.00668	376.2941	349.4365	325.0362	322.5899	319.6652	343.0192	401.9593

376	390.31	42.57255	392.032	364.5567	338.9435	336.4696	333.8069	357.415	417.171
377	405.1478	44.10461	406.4756	378.4226	352.311	349.8335	347.4713	371.2885	431.7499
378	419.3585	45.60454	419.5011	390.9136	365.0831	362.6265	360.6005	384.5865	445.6442
379	432.8961	47.07566	431.1765	401.6643	377.2132	374.8021	373.145	397.2641	458.8121
380	445.7244	48.52266	440.9822	411.1128	388.6638	386.3229	385.0636	409.2854	471.2212
381	457.8171	49.9512	450.137	419.4747	399.4067	397.1603	396.324	420.6234	482.8492
382	469.1576	51.36761	459.4362	427.1133	409.4232	407.295	406.903	431.2601	493.6837
383	479.7388	52.77846	467.144	433.9732	418.7039	416.7166	416.786	441.186	503.7214
384	489.5628	54.19021	473.9674	440.1265	427.2482	425.4232	425.9673	450.4003	512.9684
385	498.64	55.60882	480.2912	445.527	435.0639	433.4213	434.4494	458.9096	521.4387
386	506.9886	57.03949	485.8935	449.9114	442.1664	440.7247	442.2425	466.7282	529.1542
387	514.6337	58.48639	490.6402	454.1697	448.5783	447.3541	449.3639	473.8767	536.1436
388	521.6062	59.95249	495.3199	457.2147	454.328	453.336	455.8371	480.3813	542.4412
389	527.9421	61.43942	499.8781	459.4069	459.4494	458.7022	461.6913	486.273	548.0863
390	533.681	62.94746	503.6138	461.5072	463.9803	463.4884	466.9599	491.587	553.1219
391	538.8654	64.4756	506.5005	463.3975	467.9618	467.7335	471.6799	496.3609	557.5936
392	543.5392	66.0216	509.5763	465.2567	471.437	471.4786	475.8909	500.6346	561.5491
393	547.747	67.58216	511.9761	467.3442	474.4502	474.7658	479.634	504.4491	565.0364
394	551.5332	69.15313	514.5068	469.4633	477.046	477.6376	482.9511	507.8452	568.1035
395	554.9405	70.72973	516.7196	471.4182	479.2679	480.1357	485.8834	510.8636	570.7972
396	558.0096	72.30676	519.2554	473.4375	481.1582	482.3005	488.4713	513.5432	573.1624
397	560.7783	73.87886	521.5186	475.6393	482.757	484.1703	490.7532	515.9211	575.2414
398	563.281	75.44073	524.2348	477.6102	484.1012	485.7806	492.7648	518.0318	577.0734
399	565.5481	76.98729	526.2732	478.8546	485.2247	487.1638	494.5389	519.9067	578.6937
400	567.6055	78.51384	528.4651	480.7691	486.1574	488.3487	496.1047	521.5739	580.1341
401	569.4751	80.01617	530.3624	482.279	486.9253	489.3601	497.4873	523.058	581.4217
402	571.1737	81.49064	532.3548	484.0172	487.5504	490.2192	498.7082	524.3799	582.5795
403	572.7139	82.93415	534.0253	485.7805	488.0504	490.9429	499.7845	525.5566	583.6261
404	574.104	84.34417	535.7946	487.2938	488.4389	491.5443	500.7292	526.6017	584.576
405	575.348	85.71863	537.4202	488.5338	488.7258	492.0328	501.5515	527.5252	585.4393
406	576.4464	87.05589	538.2749	489.4473	488.917	492.4142	502.2568	528.3337	586.2226
407	577.3962	88.35458	538.9384	490.1386	489.0155	492.6912	502.8471	529.031	586.9287
408	578.1918	89.61355	539.8003	491.1638	489.0211	492.8636	503.3214	529.6181	587.5575
409	578.8252	90.8317	540.3773	491.9728	488.9311	492.9287	503.6762	530.0936	588.1061
410	579.2866	92.00792	540.7596	492.83	488.7406	492.882	503.9057	530.4545	588.5691
411	579.5651	93.14102	540.2769	493.0655	488.4434	492.7172	504.0026	530.6958	588.9394
412	579.649	94.22963	539.9847	492.6444	488.0319	492.427	503.9585	530.8116	589.2083
413	579.5267	95.27223	540.2088	492.1245	487.4975	492.0034	503.7641	530.7951	589.3662
414	579.1865	96.26711	539.2479	491.1648	486.8317	491.4379	503.41	530.6389	589.4026
415	578.6179	97.2124	538.1791	490.2219	486.0256	490.7222	502.887	530.3355	589.3067
416	577.8109	98.10614	536.8868	488.1872	485.0708	489.8483	502.1863	529.8775	589.0678
417	576.7575	98.94634	535.7114	486.5808	483.9594	488.8085	501.3002	529.2577	588.6753
418	575.4506	99.73108	533.783	485.2739	482.6843	487.5963	500.2219	528.4694	588.1191
419	573.8855	100.4586	531.7385	483.8701	481.2393	486.2058	498.946	527.5066	587.3898
420	572.0587	101.1272	529.4897	482.3161	479.6193	484.6323	497.4684	526.3638	586.4784

421	569.9691	101.7358	526.969	480.7323	477.8201	482.8722	495.7866	525.0365	585.3773
422	567.6169	102.2835	524.8704	478.9515	475.839	480.9229	493.8996	523.5208	584.0791
423	565.0044	102.7699	522.0778	477.2236	473.674	478.7831	491.8078	521.8137	582.5779
424	562.1352	103.1949	519.5803	475.3149	471.3244	476.4523	489.5129	519.9132	580.8682
425	559.0145	103.559	517.2435	473.1065	468.7902	473.9311	487.0178	517.8176	578.9455
426	555.6485	103.8631	514.8925	470.8195	466.0724	471.2208	484.3268	515.5264	576.8063
427	552.0447	104.1084	512.542	468.0387	463.1728	468.3238	481.4445	513.0395	574.4475
428	548.211	104.2964	510.1221	466.1684	460.0938	465.2428	478.3766	510.3575	571.8669
429	544.1563	104.4289	507.7677	463.1698	456.8383	461.9813	475.1291	507.4817	569.0629
430	539.8895	104.5077	504.9144	460.4372	453.4097	458.5432	471.7083	504.414	566.0343
431	535.42	104.5346	501.8978	457.2524	449.8117	454.9328	468.1206	501.1569	562.7806
432	530.7572	104.5113	498.7546	454.418	446.0487	451.1548	464.3725	497.7135	559.302
433	525.9104	104.4395	495.4342	451.1936	442.1251	447.2143	460.4701	494.0876	555.5989
434	520.8887	104.3202	491.1495	447.5877	438.0456	443.1168	456.4194	490.2837	551.6726
435	515.7013	104.1545	487.3437	443.8766	433.8155	438.8679	452.2261	486.3071	547.5246
436	510.3568	103.943	483.1563	439.9424	429.4404	434.4738	447.8954	482.164	543.1574
437	504.864	103.6856	478.4071	435.7805	424.9263	429.9413	443.4322	477.8613	538.5741
438	499.2313	103.3823	473.774	431.6192	420.2797	425.2774	438.8414	473.407	533.7783
439	493.4672	103.0325	469.0514	426.6778	415.5078	420.4899	434.1272	468.8102	528.7746
440	487.5801	102.6354	463.5747	421.7338	410.6183	415.5872	429.2941	464.0809	523.5685
441	481.5786	102.1899	458.1056	416.7448	405.6198	410.5785	424.3464	459.2305	518.1662
442	475.4713	101.695	451.5435	411.4913	400.5216	405.4736	419.2885	454.2713	512.5752
443	469.2672	101.1496	445.3001	405.6451	395.3338	400.2833	414.1252	449.2166	506.8035
444	462.9758	100.5529	438.4727	399.2083	390.0674	395.0189	408.8614	444.081	500.8604
445	456.6067	99.90412	431.6303	392.9947	384.7342	389.693	403.5029	438.8799	494.7559
446	450.1704	99.20314	423.9916	386.8733	379.3468	384.3184	398.0558	433.6294	488.5012
447	443.6775	98.4502	416.2161	380.4885	373.9183	378.9088	392.5271	428.3464	482.108
448	437.1392	97.64615	408.7522	373.9015	368.4627	373.4785	386.9243	423.0483	475.5888
449	430.5673	96.7925	401.7235	367.5806	362.9941	368.042	381.256	417.7525	468.9568
450	423.9736	95.89143	394.0468	360.9563	357.527	362.6142	375.5312	412.4766	462.2253
451	417.3704	94.9458	386.6355	354.5627	352.076	357.2098	369.7601	407.2375	455.4083
452	410.7701	93.95916	379.7626	348.2905	346.6554	351.8432	363.9531	402.0517	448.5195
453	404.1849	92.93567	372.9157	341.9561	341.279	346.5285	358.1214	396.9349	441.5726
454	397.6268	91.88003	366.0237	335.8541	335.9599	341.2788	352.2765	391.9012	434.5811
455	391.1073	90.79736	359.1834	329.6193	330.7102	336.1063	346.4302	386.9634	427.5577
456	384.6374	89.69309	352.6761	323.9572	325.5409	331.0218	340.5943	382.1323	420.5147
457	378.2271	88.57278	346.6454	318.5234	320.4614	326.0345	334.7804	377.4166	413.4633
458	371.8852	87.44203	340.3889	313.3769	315.4792	321.1519	328.9999	372.8228	406.4136
459	365.6196	86.30622	334.8759	308.7279	310.6003	316.3795	323.2633	368.3548	399.3747
460	359.4364	85.17044	329.6026	304.0455	305.8282	311.7206	317.5807	364.0141	392.3543

461	353.3404	84.0393	324.4853	299.0735	301.1645	307.1763	311.9608	359.7991	385.3589
462	347.3345	82.91678	319.673	294.6449	296.6085	302.7452	306.4113	355.706	378.3932
463	341.4202	81.80619	315.0404	290.3933	292.1573	298.4238	300.9386	351.7281	371.4611
464	335.5969	80.70999	310.4559	286.6282	287.8055	294.2062	295.5475	347.856	364.5648
465	329.8624	79.62984	306.0602	282.7539	283.5461	290.0843	290.2415	344.0785	357.7053
466	324.2128	78.56652	301.7971	278.8077	279.3698	286.0481	285.0222	340.3817	350.8826
467	318.6428	77.51998	297.3699	274.6997	275.2658	282.0856	279.8898	336.7503	344.0955
468	313.1456	76.4894	292.4474	270.6129	271.2216	278.1833	274.8428	333.1673	337.3422
469	307.7131	75.47329	287.9158	266.4331	267.2237	274.3265	269.8784	329.6149	330.6203
470	302.3363	74.46956	283.3559	262.1717	263.2577	270.4998	264.9922	326.0741	323.9269
471	297.0057	73.47573	278.9372	257.5337	259.309	266.6868	260.1788	322.5262	317.2588
472	291.7109	72.48904	274.2335	252.9915	255.3624	262.8714	255.4317	318.9523	310.6133
473	286.4419	71.50664	269.1819	248.5964	251.4034	259.0375	250.7434	315.3342	303.9877
474	281.1884	70.52572	264.2079	243.9751	247.418	255.1697	246.1061	311.6547	297.3797
475	275.9409	69.54373	259.3279	239.1805	243.3932	251.2535	241.5116	307.8981	290.7878
476	270.6904	68.55844	254.4378	234.1981	239.3174	247.2759	236.9515	304.0504	284.2114
477	265.429	67.56812	249.2679	229.006	235.1807	243.2256	232.4176	300.0996	277.6509
478	260.15	66.57159	243.4813	223.7763	230.9749	239.0932	227.9023	296.0362	271.1075
479	254.848	65.56829	237.8978	218.563	226.6941	234.8713	223.3984	291.8531	264.5839
480	249.5195	64.55827	232.0095	213.1501	222.3346	230.5551	218.8997	287.546	258.0836
481	244.1623	63.54222	225.7966	207.6426	217.8949	226.1421	214.4009	283.1131	251.6115
482	238.7763	62.52136	219.9349	202.1722	213.3762	221.6324	209.8979	278.5557	245.1733
483	233.3628	61.49741	213.9445	197.0579	208.7816	217.0286	205.3881	273.8774	238.776
484	227.9253	60.47245	208.5264	191.9736	204.1169	212.3357	200.8698	269.0845	232.4271
485	222.4686	59.4488	202.9721	186.9303	199.3896	207.5608	196.343	264.1858	226.1349
486	216.9992	58.42892	197.1984	181.6283	194.6093	202.7134	191.809	259.1919	219.9082
487	211.5248	57.41524	191.922	176.377	189.7872	197.8046	187.2703	254.1155	213.7561
488	206.0545	56.41004	186.4791	170.8685	184.9359	192.8472	182.7306	248.9705	207.6877
489	200.5982	55.41539	181.2698	165.8166	180.0689	187.8554	178.1949	243.7723	201.7119
490	195.1666	54.43296	175.9961	161.1547	175.2005	182.844	173.6689	238.5367	195.8373
491	189.7708	53.46409	170.4004	156.3854	170.3453	177.8287	169.1592	233.2802	190.0719
492	184.4221	52.50962	165.2442	151.732	165.5182	172.8252	164.6731	228.0191	184.4231
493	179.1317	51.57	160.0534	146.8591	160.7335	167.8493	160.218	222.7696	178.8972
494	173.9106	50.64527	155.1095	142.3983	156.005	162.9162	155.8018	217.5471	173.4995
495	168.7691	49.73511	149.9172	138.3217	151.3456	158.0407	151.4323	212.3661	168.2343
496	163.7169	48.83891	144.9405	134.153	146.7672	153.2361	147.1172	207.24	163.1044
497	158.7627	47.95592	140.4761	130.2165	142.2801	148.5149	142.8636	202.1808	158.1118
498	153.9142	47.08527	136.2774	126.3458	137.8935	143.888	138.6784	197.1988	153.2569
499	149.1779	46.22613	132.2998	122.4142	133.6148	139.365	134.5679	192.3029	148.5393
500	144.5593	45.37778	128.2403	118.8642	129.4498	134.9536	130.5374	187.5002	143.9572

501	140.0623	44.53971	124.0764	115.2684	125.4027	130.6599	126.5917	182.7961	139.5082
502	135.6899	43.71166	120.1592	111.556	121.4761	126.4886	122.7346	178.1945	135.1888
503	131.4438	42.89366	116.3342	108.1416	117.6712	122.4425	118.9692	173.6975	130.995
504	127.3247	42.08608	112.5163	104.7604	113.9876	118.5231	115.2976	169.3063	126.9223
505	123.3321	41.28954	108.7726	101.5067	110.4241	114.7306	111.7213	165.0204	122.9661
506	119.465	40.50495	105.1675	98.4276	106.9781	111.064	108.241	160.8386	119.1214
507	115.7215	39.73341	101.9274	95.32168	103.6464	107.521	104.8568	156.7587	115.3834
508	112.099	38.97611	98.67519	92.2335	100.4251	104.099	101.5682	152.7781	111.7478
509	108.5947	38.23428	95.59189	89.45333	97.31008	100.7944	98.37418	148.8936	108.2103
510	105.2054	37.50907	92.89333	86.79478	94.29684	97.60328	95.27359	145.1021	104.7674
511	101.928	36.80147	90.20576	84.26902	91.381	94.52168	92.2649	141.4001	101.4161
512	98.75919	36.1122	87.92717	81.52903	88.55834	91.54542	89.34648	137.7847	98.15396
513	95.69579	35.44169	85.34943	79.0676	85.82497	88.6705	86.51664	134.2531	94.97949
514	92.73487	34.79002	82.90135	76.79116	83.17742	85.8931	83.77372	130.8029	91.89168
515	89.87369	34.15686	80.8978	74.41783	80.6127	83.20978	81.11616	127.4323	88.89019
516	87.10978	33.54154	78.68353	72.22336	78.12841	80.61742	78.5425	124.1398	85.97528
517	84.44094	32.94303	76.5747	70.34555	75.72264	78.11336	76.05143	120.9247	83.14763
518	81.86518	32.36003	74.53818	68.56171	73.39403	75.69529	73.64177	117.7864	80.40826
519	79.38073	31.79102	72.61081	66.57119	71.14164	73.3613	71.31248	114.7249	77.75838
520	76.98594	31.23435	70.82181	64.91372	68.9649	71.10976	69.06257	111.7405	75.19921
521	74.67917	30.68836	69.19642	63.50136	66.86347	68.93926	66.89113	108.8335	72.73184
522	72.45878	30.15144	67.51685	62.20619	64.83713	66.84853	64.79716	106.0045	70.35707
523	70.32295	29.62213	65.78239	60.80179	62.88562	64.83626	62.77961	103.2537	68.07525
524	68.26964	29.09924	64.23466	59.27781	61.00853	62.90108	60.83723	100.5812	65.88613
525	66.29649	28.58182	62.79869	57.84268	59.20514	61.04136	58.96853	97.98678	63.78877
526	64.40076	28.06931	61.41484	56.37243	57.4743	59.25517	57.17172	95.46959	61.78145
527	62.57924	27.56144	59.8621	54.99242	55.81435	57.54016	55.44465	93.02831	59.86162
528	60.82826	27.05832	58.15854	53.73349	54.22302	55.89353	53.78477	90.66089	58.02587
529	59.14366	26.56035	56.43065	52.20525	52.69741	54.31194	52.18909	88.36463	56.26995
530	57.52081	26.06816	54.77989	50.68771	51.23394	52.79154	50.65421	86.13614	54.58883
531	55.95467	25.5826	53.32544	49.36398	49.82839	51.32796	49.17635	83.97132	52.9768
532	54.43984	25.1046	51.72246	48.05985	48.47597	49.91639	47.75134	81.86552	51.42759
533	52.97069	24.63513	50.27247	46.7345	47.17138	48.55163	46.37473	79.81357	49.93452
534	51.54148	24.17508	48.78426	45.43001	45.90895	47.22822	45.04186	77.80992	48.49068
535	50.14648	23.72522	47.41841	44.13719	44.68278	45.94056	43.74798	75.84883	47.08915
536	48.78013	23.28615	45.9709	42.82554	43.48692	44.68306	42.48835	73.92449	45.72317
537	47.43725	22.85821	44.57195	41.63714	42.31555	43.45034	41.25837	72.03128	44.38638
538	46.11313	22.44148	43.23565	40.44833	41.16315	42.23734	40.05376	70.16387	43.073
539	44.80373	22.03579	41.93832	39.26287	40.02476	41.03953	38.87061	68.31751	41.77804
540	43.50583	21.64069	40.70143	38.11711	38.89606	39.85309	37.70561	66.48813	40.49745

S. Table 8. Raw data for the co-existing interference effect of metal ions on (a) Fe(III) common excipients and metal ions on CFT (b) and (c)

a	b	c
P1 847.96657		P2 681.19617
P2 474.408	P2 693.88546	P2/CFT 343.4284
P2/Ca(II) 487.315	P2/CFT 394.545	P2/CFT/Ca(II) 317.14114
P2/Na(I) 471.003	P2/CFT/Glu. 389.378	P2/CFT/Al(III) 325.17888
P2/Cd(II) 454.866	P2/CFT/Gum 404.895	P2/CFT/Co(II) 270.79616
P2/Ag(I) 469.531	P2/CFT/F Acid 360.161	P2/CFT/Na(I) 323.97937
P2/Mn(II) 448.144	P2/CFT/Gal. 391.378	P2/CFT/Ag(I) 315.14077
P2/Ni(II) 424.761	P2/CFT/C Acid 350.126	P2/CFT/Mg(II) 334.64345
P2/Pb(II) 435.784	P2/CFT/Fru 381.342	P2/CFT/Ni(II) 354.09356
P2/Sn(II) 450.057		P2/CFT/Hg(II) 332.1967
P2/K(I) 470.421		P2/CFT/Cu(II) 321.14793
P2/Hg(II) 443.039		P2/CFT/K(I) 352.53083
P2/Mg(II) 469.3		P2/CFT/Pb(II) 339.12442
P2/Cu(II) 452.936		P2/CFT/Pd(II) 325.65575
P2/Co(II) 419.628		P2/CFT/Cr(III) 277.39201
P2/Zn(II) 446.594		P2/CFT/Mn(II) 325.39201
P2/Fe(II) 426.097		P2/CFT/Fe(III) 291.67849
P2/Al(III) 465.54		P2/CFT/Fe(II) 303.70773
P2/Pd(II) 464.09		P2/CFT/Cd(II) 324.87775

S. Table 9. Raw data for the determination of optimum (a) Concentration (b) pH (c) solvent and (d) time

a

Conc.	F°	F	F°-F
5	731.818	596.154	135.664
10	790.21	600	190.21
15	813.287	608.392	204.895
20	829.312	623.462	205.85

b

pH	F°	F	F°-F
2	508.263	344.135	164.128
4	675.965	440.871	235.094
6	750.197	463.282	286.915
7	879.86	434.501	445.359
8	892.104	456.081	436.023
10	916.953	501.104	415.849
12	930.944	541.825	389.119

c

solvent	F°	F	F°-F
Water	623.044	198.167	424.877
ACN	466.023	113.753	352.27
DMSO	289.364	60.83	228.534
DMF	368.164	81.248	286.916
Methanol	550.267	205.648	344.619

d

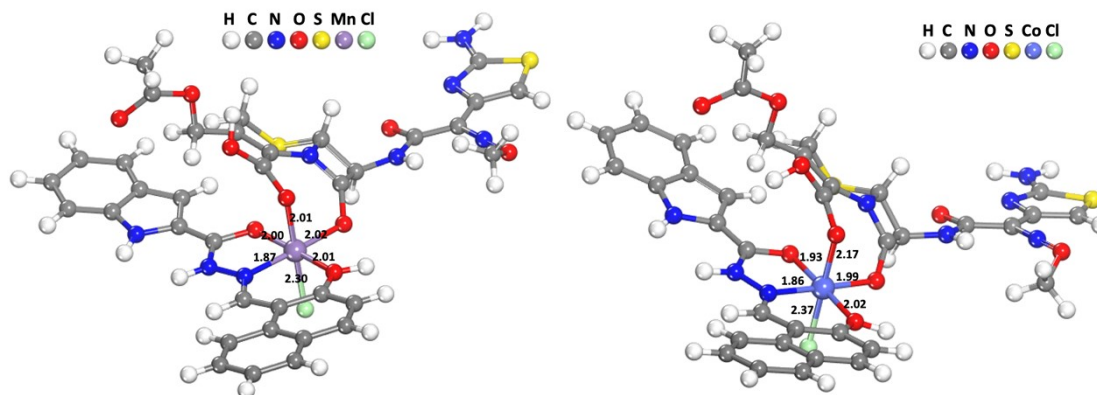
time	F°	F
2	541.958	250.35
10	597.902	260.839
20	629.371	287.063
30	639.65	302.797
40	662.028	313.283
50	667.924	321.05
60	671.312	325.415

S. Table 10. Raw data of UV-vis. for the P1 and P1/Fe(III)

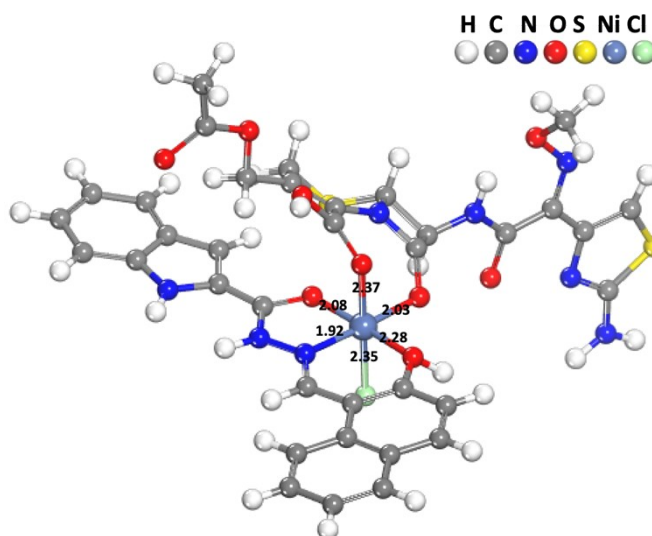
450	-0.05591	-0.01925	-0.00705	0.02473	0.04508
448	-0.05616	-0.01847	-0.00585	0.02704	0.04813
446	-0.05659	-0.01771	-0.00464	0.02952	0.05143
444	-0.05717	-0.01696	-0.00343	0.03209	0.05495
442	-0.05788	-0.01625	-0.00218	0.03483	0.05874
440	-0.05877	-0.01556	-8.96E-04	0.03773	0.06285
438	-0.05978	-0.01484	4.87E-04	0.0408	0.06725
436	-0.06098	-0.01426	0.00175	0.04388	0.07195
434	-0.0623	-0.01373	0.003	0.04702	0.07702
432	-0.06394	-0.01343	0.00405	0.0501	0.08239
430	-0.06553	-0.01299	0.00532	0.05339	0.08803
428	-0.06715	-0.01242	0.00672	0.05712	0.09392
426	-0.06853	-0.01147	0.00863	0.06137	0.09999
424	-0.06982	-0.01025	0.01076	0.06618	0.10648
422	-0.07099	-0.00861	0.01344	0.07144	0.1135
420	-0.07207	-0.0067	0.01642	0.07718	0.12116
418	-0.07311	-0.00436	0.01994	0.08343	0.12949
416	-0.07405	-0.00175	0.02376	0.09009	0.13842
414	-0.07487	0.00124	0.02806	0.09734	0.14802
412	-0.07549	0.00446	0.03265	0.10503	0.15825
410	-0.07603	0.00806	0.03761	0.11345	0.16935
408	-0.07634	0.01196	0.04296	0.12241	0.18117
406	-0.07657	0.01632	0.04863	0.13225	0.19391
404	-0.07676	0.02108	0.05464	0.14281	0.20743
402	-0.07699	0.02632	0.06099	0.15433	0.22207
400	-0.07723	0.03191	0.0676	0.16619	0.23768
398	-0.07744	0.03784	0.0748	0.17888	0.25446
396	-0.07776	0.04403	0.0824	0.19183	0.27227
394	-0.07804	0.05055	0.09067	0.20557	0.29092
392	-0.07845	0.05719	0.09926	0.21958	0.31057
390	-0.07889	0.06404	0.10826	0.23401	0.33092
388	-0.07951	0.07096	0.11754	0.2488	0.3523
386	-0.08011	0.07815	0.12715	0.26393	0.37437
384	-0.08081	0.0854	0.13719	0.27961	0.39725
382	-0.08143	0.09298	0.14756	0.29566	0.42064
380	-0.08205	0.10065	0.15837	0.31227	0.44475

378	-0.08236	0.10875	0.16956	0.32932	0.46944
376	-0.08256	0.11689	0.18101	0.34662	0.49467
374	-0.08259	0.12531	0.19277	0.36409	0.5203
372	-0.08321	0.1332	0.20415	0.38088	0.54628
370	-0.08409	0.14068	0.21521	0.39724	0.5727
368	-0.08534	0.14762	0.22564	0.41312	0.59941
366	-0.08664	0.15423	0.23574	0.42891	0.6259
364	-0.08801	0.16064	0.24529	0.44442	0.65197
362	-0.08929	0.16699	0.25471	0.46	0.67757
360	-0.09081	0.17313	0.2636	0.47526	0.7025
358	-0.0925	0.17905	0.27237	0.49044	0.72697
356	-0.09476	0.18461	0.2805	0.50502	0.75058
354	-0.09734	0.18986	0.28844	0.5195	0.77371
352	-0.10022	0.19486	0.29589	0.53372	0.79592
350	-0.10288	0.20008	0.30342	0.5482	0.81777
348	-0.10488	0.20583	0.31142	0.56361	0.83883
346	-0.10535	0.21297	0.32045	0.5801	0.86006
344	-0.10384	0.22175	0.33145	0.59949	0.88108
342	-0.09961	0.23347	0.34474	0.62108	0.90308
340	-0.09229	0.24799	0.36099	0.64654	0.92619
338	-0.08107	0.26676	0.38089	0.67549	0.95088
336	-0.06547	0.2897	0.40475	0.70704	0.97826
334	-0.04417	0.31836	0.43503	0.74607	1.00743
332	-0.01676	0.35332	0.47144	0.7898	1.04093
330	0.01806	0.39501	0.5157	0.84237	1.07566
328	0.06038	0.44536	0.56908	0.90662	1.1193
326	0.11084	0.50339	0.63063	0.97861	1.16544
324	0.16901	0.57064	0.70166	1.06285	1.22508
322	0.23465	0.64519	0.78073	1.15948	1.28945
320	0.30661	0.72644	0.86624	1.26278	1.36418
318	0.38391	0.81287	0.95806	1.37546	1.44549
316	0.46469	0.90241	1.05316	1.49123	1.53076
314	0.54731	0.99373	1.15001	1.6083	1.62287
312	0.62971	1.08409	1.24611	1.72491	1.71354
310	0.71011	1.17221	1.33925	1.80772	1.83695
308	0.78631	1.2554	1.42767	1.89672	1.94343
306	0.85674	1.3322	1.50914	1.98374	2.04106
304	0.91942	1.40025	1.58164	2.0618	2.12796
302	0.97354	1.45866	1.64388	2.13243	2.20315
300	1.01767	1.506	1.69427	2.19094	2.26457

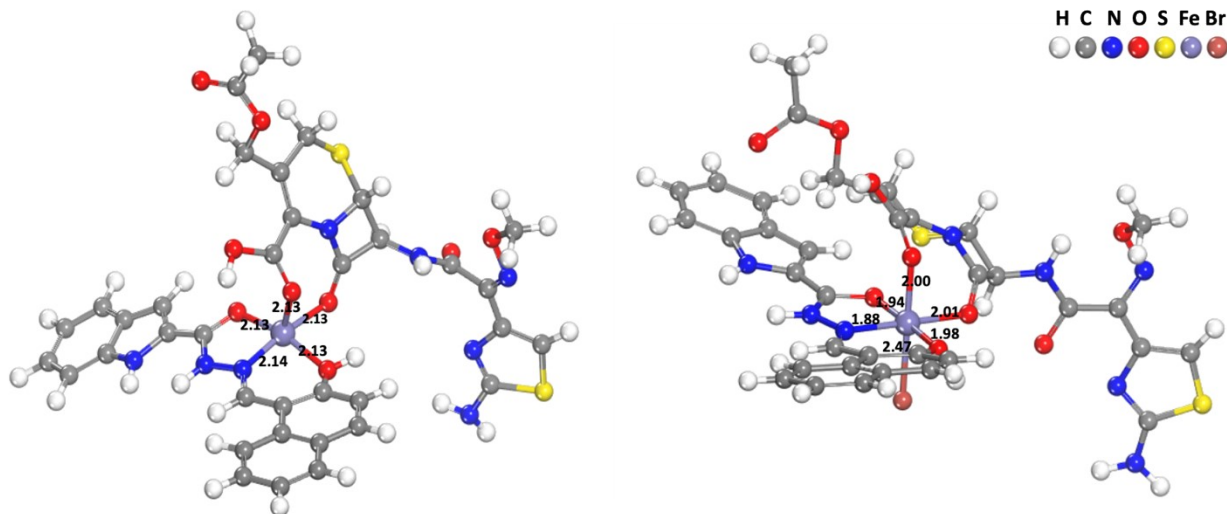
298	1.05082	1.54128	1.73204	2.23773	2.31162
296	1.07198	1.56384	1.75612	2.27037	2.34264
294	1.08048	1.57293	1.76638	2.28839	2.35753
292	1.07604	1.56852	1.76237	2.29156	2.35564
290	1.05855	1.55037	1.74424	2.27982	2.33732
288	1.02801	1.51881	1.71183	2.25445	2.3025
286	0.985	1.47404	1.66576	2.2158	2.25201
284	0.93006	1.41687	1.60661	2.16584	2.18638
282	0.86444	1.34827	1.53558	2.10484	2.107
280	0.78966	1.26989	1.45457	2.01563	2.03597
278	0.70801	1.18398	1.36549	1.91469	1.95921
276	0.62142	1.09266	1.27124	1.80703	1.8799
274	0.53265	0.99909	1.17384	1.69534	1.79797
272	0.44414	0.90538	1.07637	1.58323	1.72258
270	0.35989	0.81633	0.98319	1.47345	1.6495
268	0.28295	0.73456	0.89746	1.37335	1.58827
266	0.21743	0.66466	0.8251	1.28437	1.53311
264	0.16461	0.60881	0.76679	1.21427	1.48769
262	0.12682	0.56761	0.72455	1.17068	1.46206
260	0.10319	0.54455	0.70104	1.15244	1.44103
258	0.09494	0.53512	0.69355	1.15743	1.45066
256	0.10056	0.54485	0.70191	1.18915	1.47657
254	0.12105	0.56849	0.73133	1.24075	1.52677
252	0.15504	0.6072	0.77432	1.30816	1.59127
250	0.20268	0.66445	0.8366	1.39284	1.67362
248	0.26209	0.73163	0.91619	1.48741	1.76569
246	0.33081	0.81513	1.00124	1.59299	1.86914
244	0.40686	0.9069	1.10313	1.71587	1.97791
242	0.48647	1.00474	1.21552	1.85196	2.09641
240	0.56992	1.11391	1.33184	1.99432	2.20966
238	0.65301	1.21932	1.4582	2.14922	2.32263
236	0.73425	1.32822	1.57343	2.29288	2.45634
234	0.80894	1.42216	1.69125	2.43428	2.57804
232	0.83748	1.46765	1.74129	2.47993	2.722
230	0.8618	1.5094	1.78693	2.51739	2.83689
228	0.88192	1.54742	1.82817	2.54668	2.93814
226	0.89784	1.5817	1.865	2.56777	2.95635
224	0.90954	1.61224	1.89744	2.58069	2.95739
222	0.91703	1.63904	1.92548	2.58542	2.94127
220	0.92032	1.66211	1.94912	2.58196	2.90799
218	0.91939	1.68144	1.96836	2.57033	2.85754
216	0.91426	1.69704	1.9832	2.5505	2.78993
214	0.90491	1.70889	1.99365	2.5225	2.70515
212	0.89136	1.71701	1.99969	2.48631	2.60321
210	0.8736	1.7214	2.00133	2.44193	2.48411
208	0.85163	1.72204	1.99858	2.38937	2.34784
206	0.82546	1.71895	1.99142	2.32863	2.19441
204	0.79507	1.71212	1.97987	2.25971	2.02381
202	0.76047	1.70156	1.96391	2.18259	1.83606
200	0.72167	1.68725	1.94356	2.0973	1.63113



S. **Figure 3a.** Mn(II) and Co(II) complexes of P1 and cefotaxime, left and right, respectively.



S. **Figure 3b.** Ni(II) complex of P1 and cefotaxime



S. Figure 5 Five coordinated complex (left) and six coordinated Br⁻ complex (right) of P1 and P2-CFT

