

Supporting Information

Injectable photo-crosslinking silk hydrogel system with biphasic release of BTXA and 5-Fu promotes scarless wound healing

Ming Xu^{a,b,†}, Xihang Wang^{c,†}, Ziyi Zhou^{a,†}, Linna Wang^d, Jia Zhou^d, Xinyue Hu^a, Yuanfei Wang^{e,*}, Tong Wu^{a,b,*}

^a Medical Research Center, The Affiliated Hospital of Qingdao University, Qingdao Medical College, Qingdao University, Qingdao 266000, China

^b Shandong Key Laboratory of Medical and Health Textile Materials, Collaborative Innovation Center for Eco-textiles of Shandong Province and the Ministry of Education, College of Textile & Clothing, Qingdao University, Qingdao 266071, China

^c Department of Plastic Surgery, Qilu Hospital (Qingdao), Shandong University, Qingdao 266035, China

^d Lanzhou Biotechnology Development Co., LTD, Lanzhou 730046, China

^e Qingdao Stomatological Hospital Affiliated to Qingdao University, Qingdao 266001, China

[†] Ming Xu, Xihang Wang, and Ziyi Zhou contributed equally to this work.

* Corresponding authors:

Yuanfei Wang (wangyuanfei@qdu.edu.cn)

Tong Wu (twu@qdu.edu.cn)

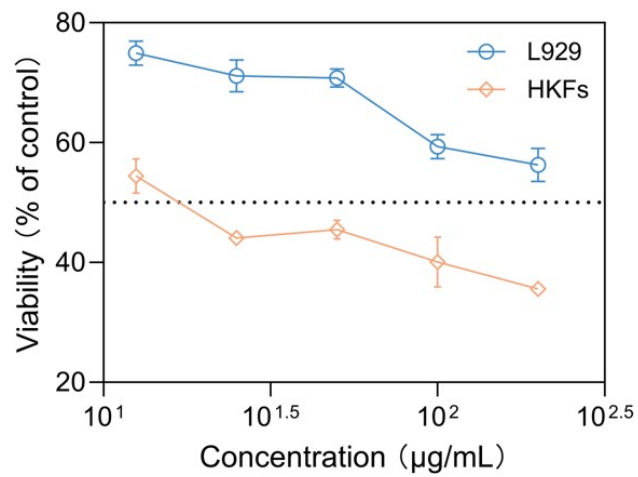


Fig. S1. IC₅₀ of HKFs and L929 cells. The x-axis represents the concentration of 5-Fu, and the concentration values are presented in scientific notation, where 10¹=10, 10^{1.5}≈31.62, 10²=100, and 10^{2.5}≈316.2.

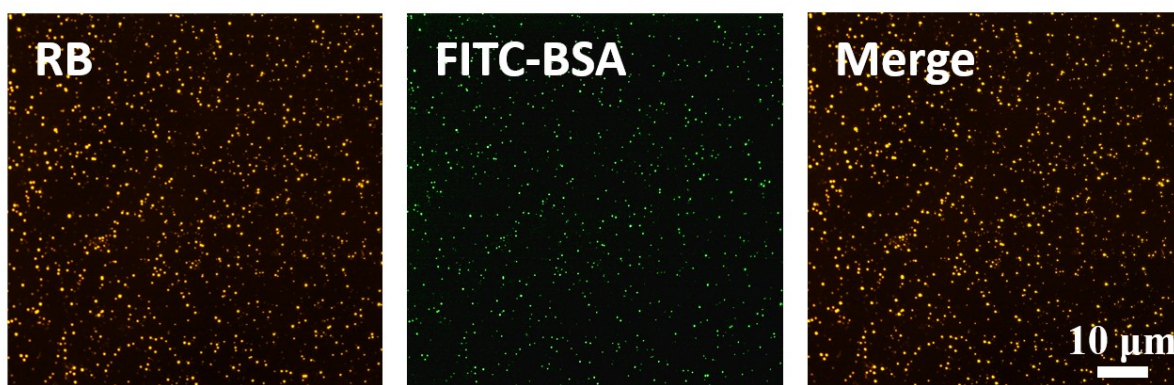


Fig. S2. Fluorescence staining and merged micrographs of core-shell structured microspheres (shell layer: red; core layer: green).

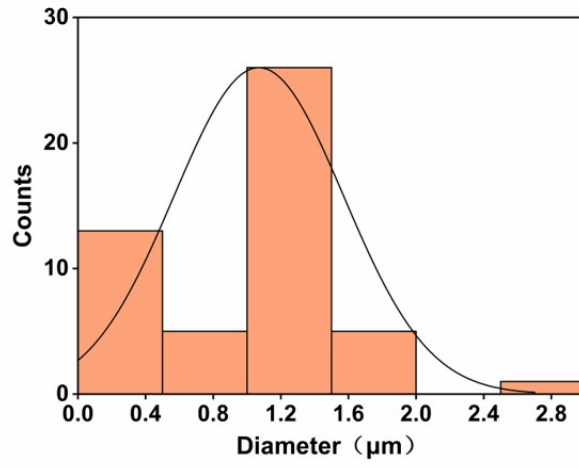


Fig. S3. Particle size distribution histogram of microspheres.

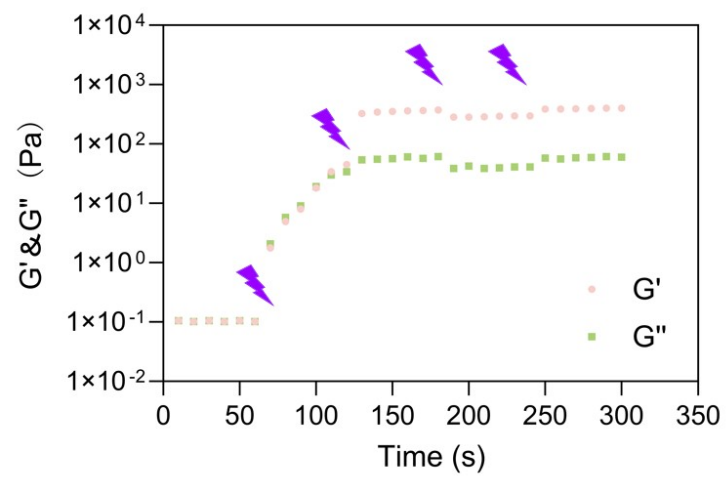


Fig. S4. Rheological analysis of SilMA.

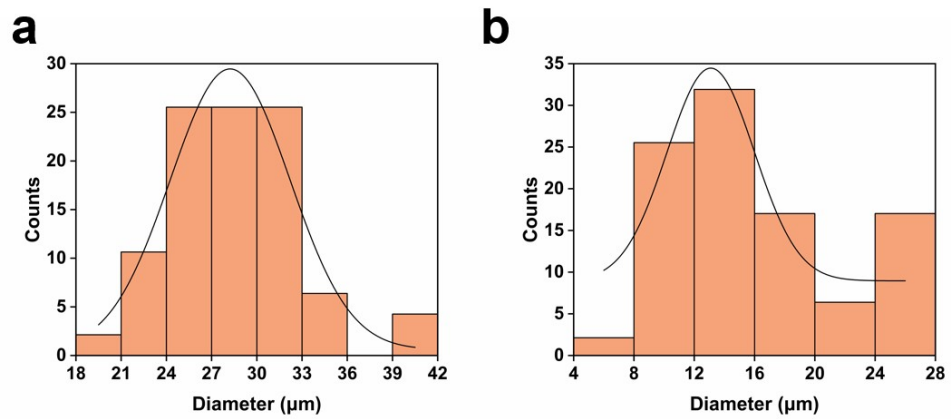


Fig. S5. Histogram of pore size distribution of (a) SilMA and (b) F@P-B-SilMA.

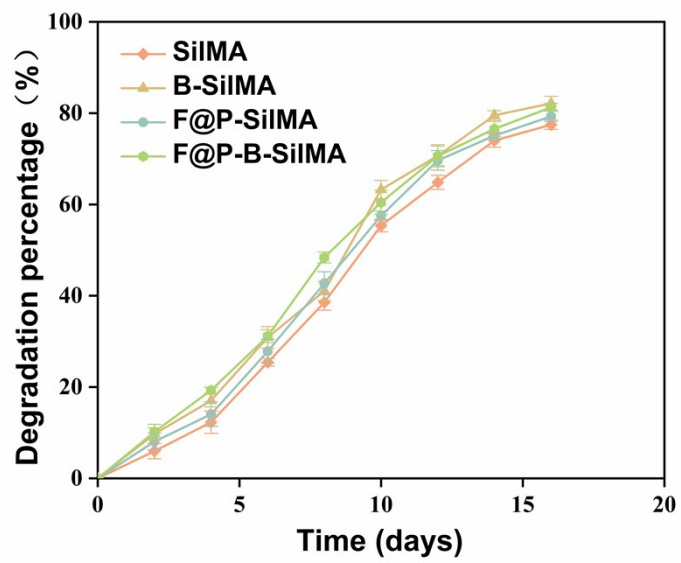


Fig. S6. *In vitro* degradation profiles.

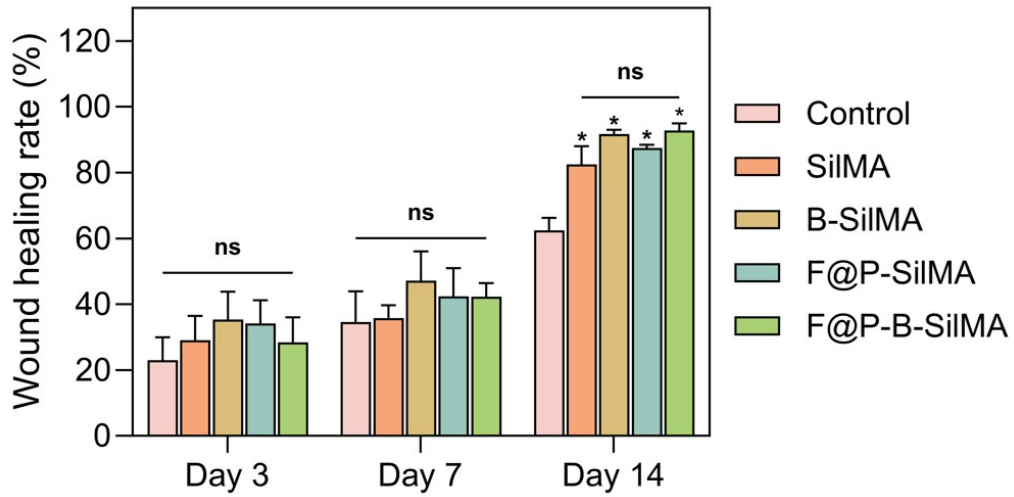


Fig. S7. Wound healing rate after treatment by the different groups for 3, 7, and 14 days, respectively. “ns” indicates no significant difference between groups. $*P < 0.05$ indicates statistically significant difference when compared with the control group.

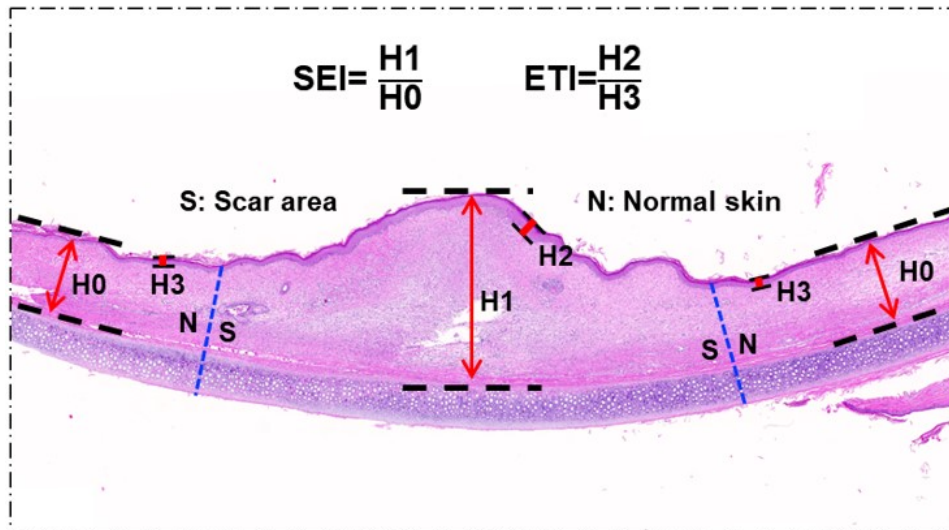


Fig. S8. Measurement schematic for SEI and ETI.