

Supporting information

Figure S1: Contact angle measurement with different solvents (a) and surface energy calculation (b) of PDMS-based coatings (Reprinted with permission of reference 11)

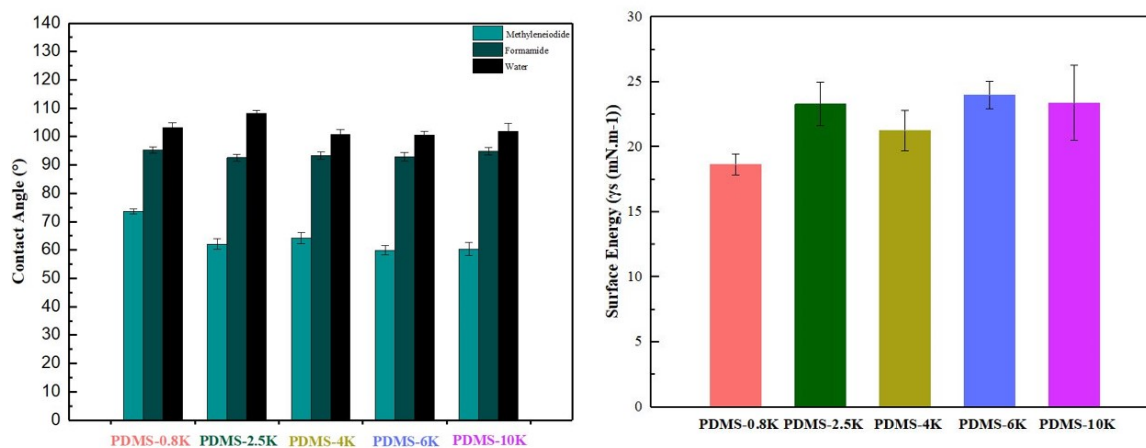


Figure S2: Solid-state ^{29}Si NMR spectra for PDMS films obtained with different molecular weight.

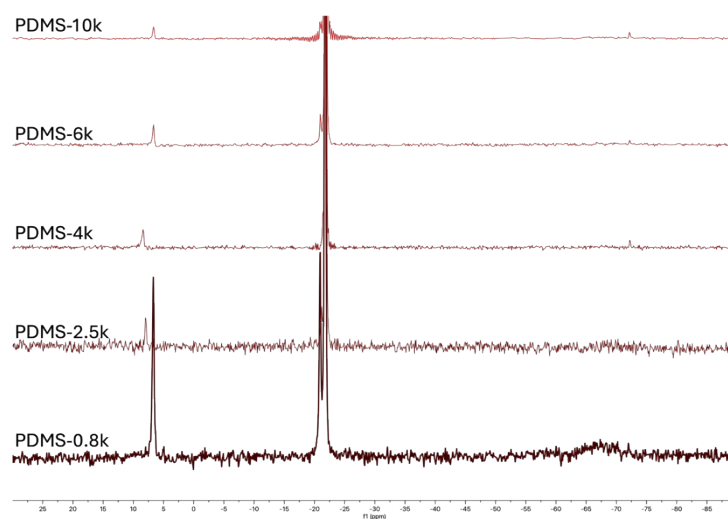


Figure S3: Fit by the JKR model for the nanoindentation data of PDMS-0.8K and PDMS-4K.

