

Supporting Information

Design & Self-assembly of an Unconventional Peptide-Based Dicephalic Surfactant with Inverted Architecture

*Vinoth Vetrivel^{a,b}, Manaswini Gowtham^c, Madivala G Basavaraj^c, Vinod K. Aswal^d, Gopalan
Akilandeswari,^e Niraikulam Ayyadurai,^e Ganesh Shanmugam^{a, b*}*

^[a] Organic & Bioorganic Chemistry Laboratory, Council of Scientific and Industrial Research

(CSIR) - Central Leather Research Institute (CLRI), Adyar, Chennai, 600020, India

^[b] Academy of Scientific and Innovative Research (AcSIR), Ghaziabad-201002, India

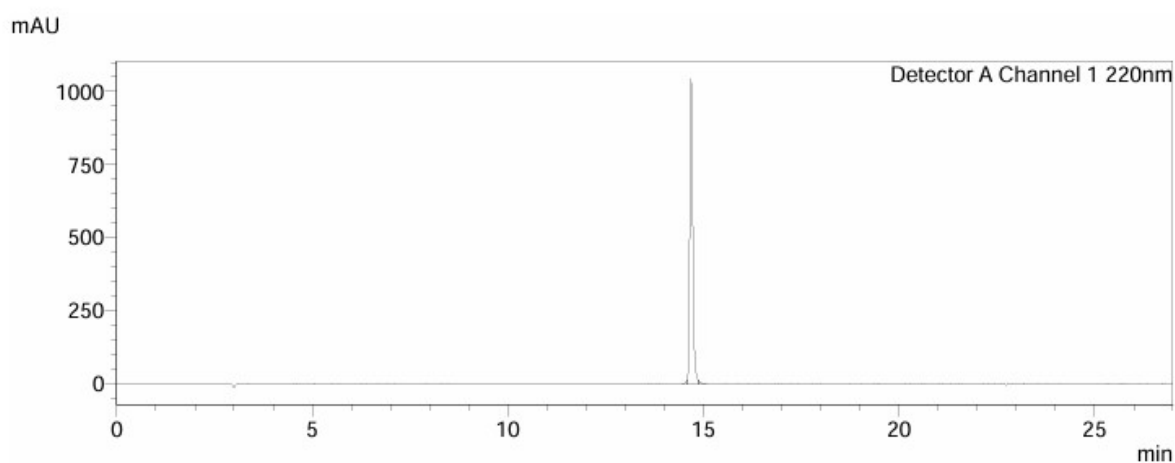
^[c] Department of Chemical Engineering, Indian Institute of Technology Madras, Chennai,
600036, India

^[d] Solid State Physics Division, Bhabha Atomic Research Center (BARC), Trombay,
Mumbai 400085, India

^[e] Biochemistry & Biotechnology Laboratory, Council of Scientific and Industrial Research
(CSIR) - Central Leather Research Institute (CLRI), Adyar, Chennai, 600020, India

Table of contents

Contents	Pages
Figure S1. HPLC chromatogram of DiFm-GXY peptide.	P2
Figure S2. ESI-MS spectrum DiFm-GXY peptide	P3
Figure S3. Dynamic surface tension of DiFm-GXY peptide	P4
Figure S4. FE-SEM images of DiFm-GXY (0.75 mM) micelle aggregates	P5



Peak Table

Detector A Channel 1 220nm			
Peak#	Ret. Time	Area	Area%
1	14.579	39885	0.708
2	14.684	5548188	98.509
3	14.879	44097	0.783
Total		5632170	100.000

Figure S1 HPLC chromatogram of DiFm-GXY and its purity analysis.

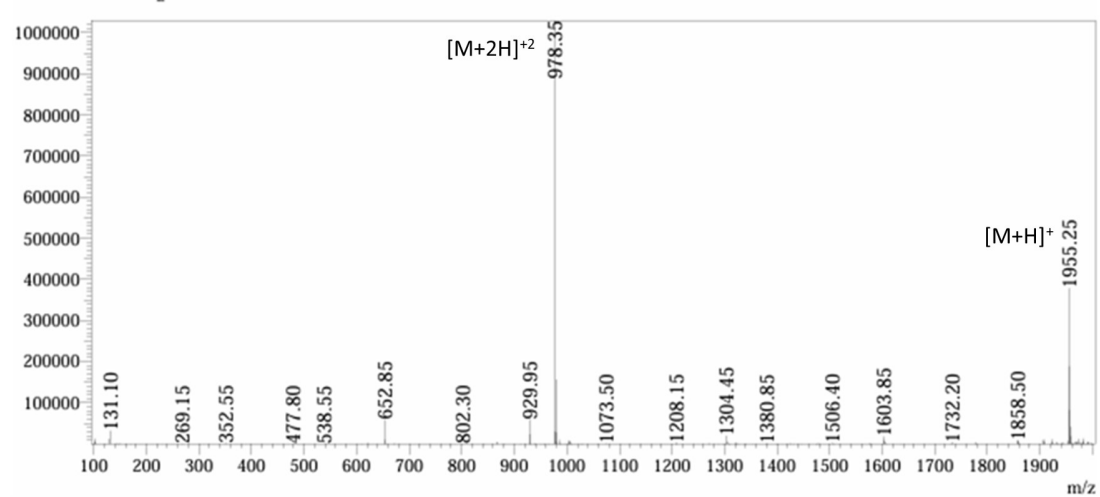


Figure S2 Electrospray ionization mass spectrum of DiFm-GXY, confirming its molecular weight.

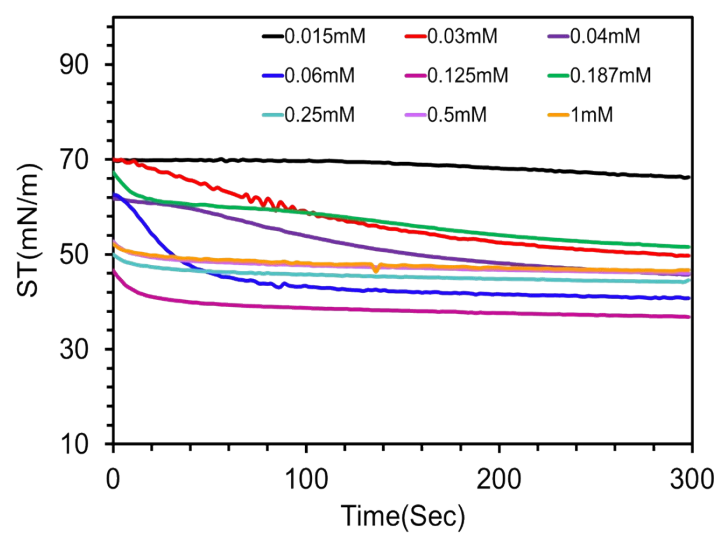


Figure S3. Dynamic surface tension (change in surface tension as a function of time) of DiFm-GXZ at different concentrations.

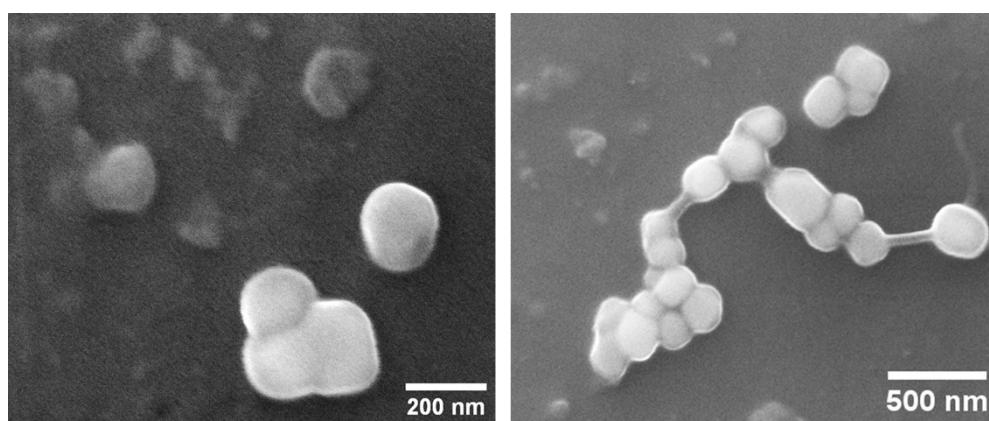


Figure S4. FE-SEM images of DiFm-GXY (>CMC, 75 μ M) Unimicellar aggregates.