

## **Sustainable Glycerol-Based Reactive Diluent Alternatives to the Commercial Ethylene Glycol Diacrylate (EGDA) and 2-Hydroxyethyl Methacrylate (HEMA) for Additive Manufacturing**

Vojtěch Jašek<sup>a\*</sup>, Silvestr Figalla<sup>a\*</sup>, Veronika Lavrinčíková<sup>a,b</sup>, and Radek Přikryl<sup>a</sup>

a Institute of Materials Chemistry, Faculty of Chemistry, Brno University of Technology, 612 00 Brno, Czech Republic.

b Materials Research Centre, Faculty of Chemistry, Brno University of Technology, 612 00 Brno, Czech Republic.

\*corresponding author: [xcjasekv@vutbr.cz](mailto:xcjasekv@vutbr.cz), [xcfigallas@vutbr.cz](mailto:xcfigallas@vutbr.cz)

### **Table of Contents**

#### **1. Structural verification of the synthesized compounds**

- **Figure S1-S2.** Methacrylated vegetable oil (MO) cross-analysis.
- **Figure S3-S5.** Glycerol monomethacrylate (MGLY) cross-analysis.
- **Figure S6-S8.** Glycerol trimethacrylate (TGLY) cross-analysis.

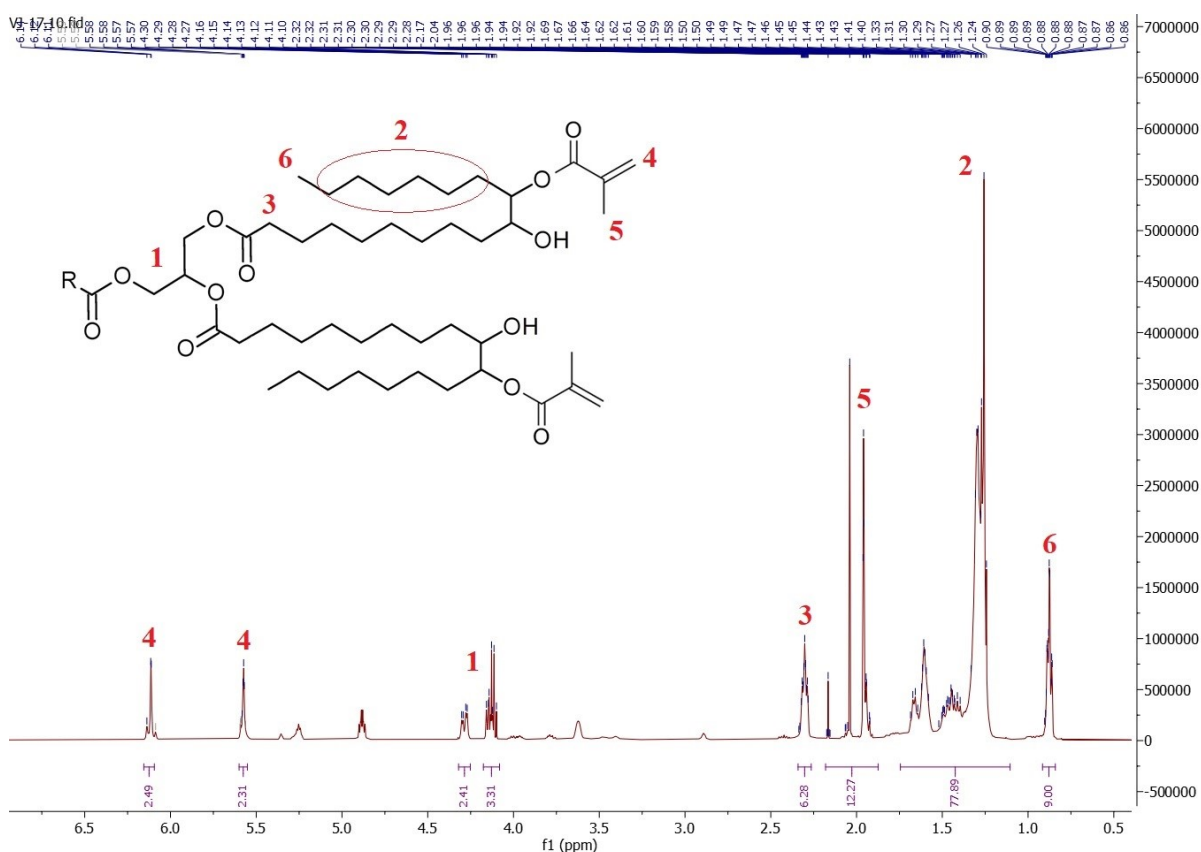
#### **2. Thermo-mechanical additional data**

- **Figure S9.** Loss moduli measured value.

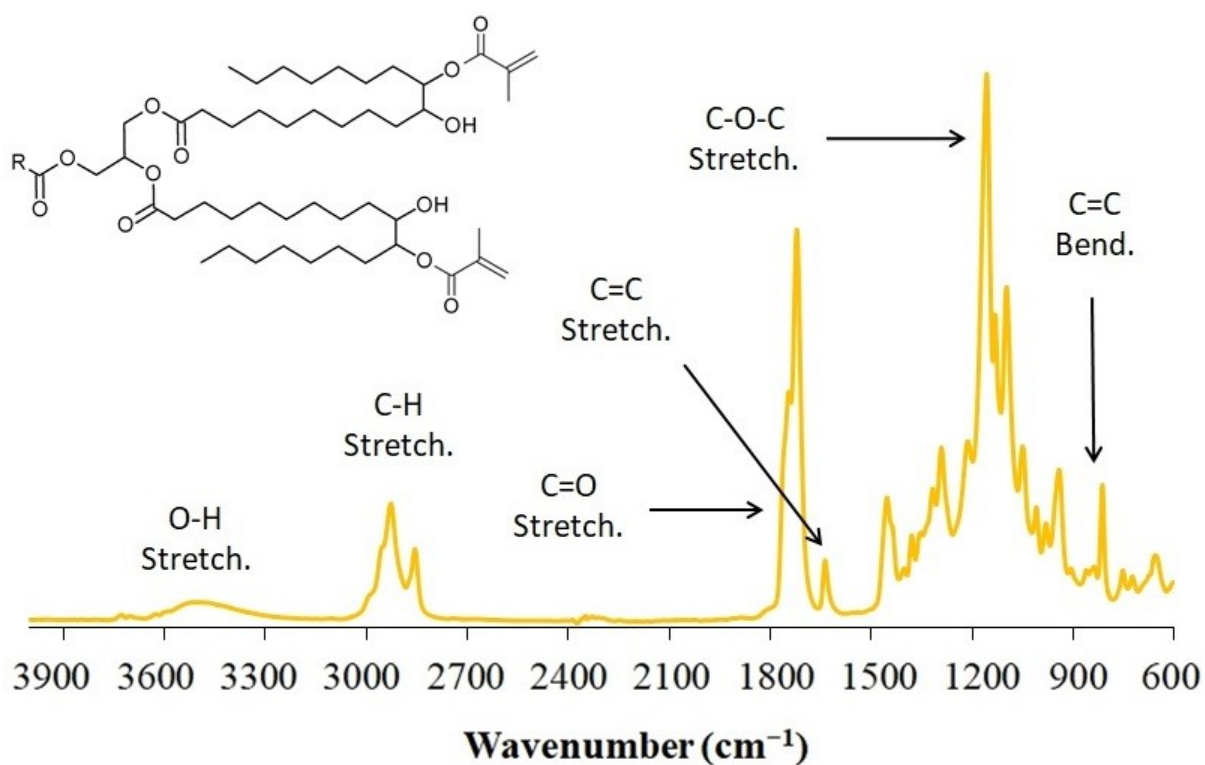
#### **3. Mechanical tests additional data**

- **Figure S10.** Stress-strain curves of the tensile test.
- **Figure S11.** Stress-strain curves of the flexural test.

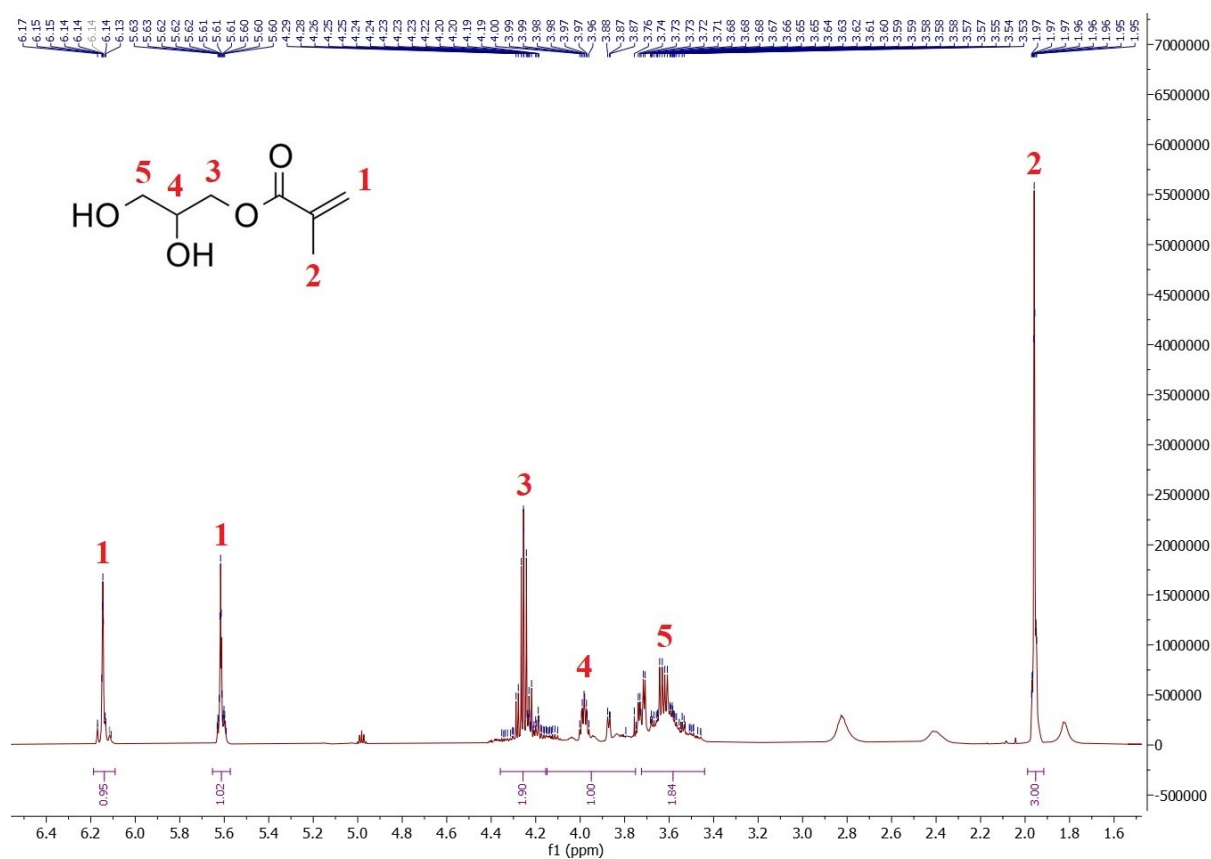
## 1. Structural verification of the synthesized compounds



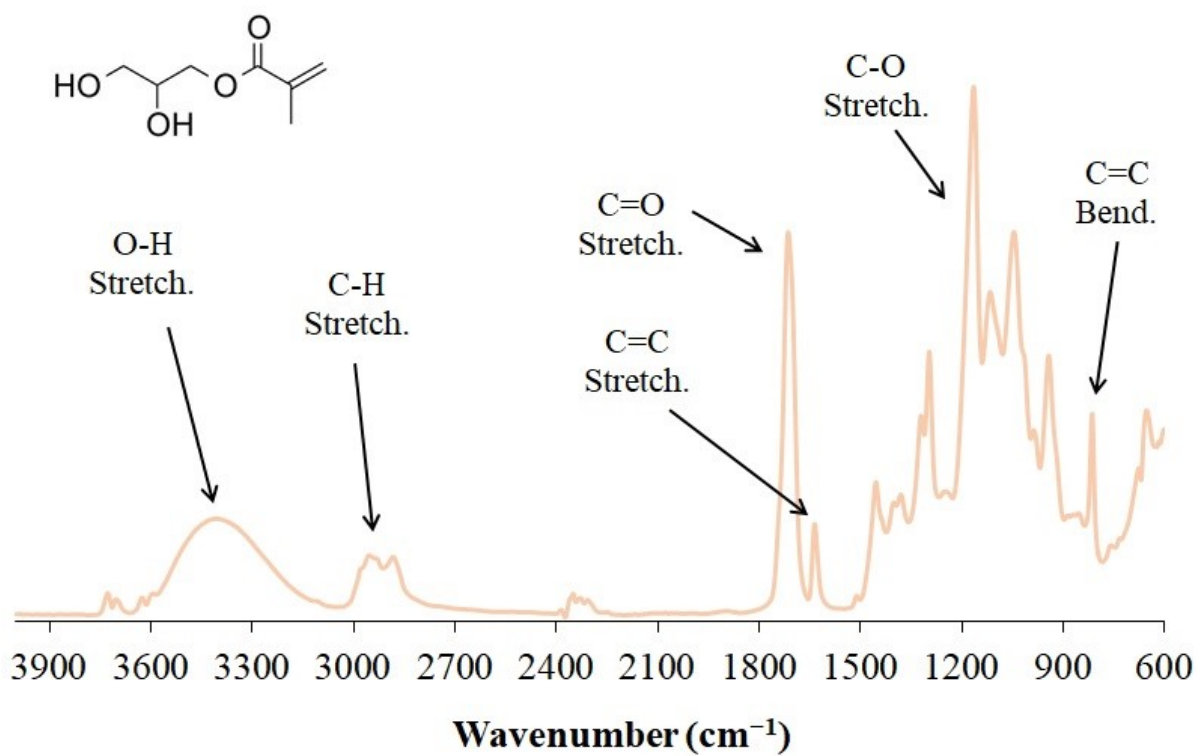
**Figure S1.**  $^1\text{H}$  NMR spectrum of the methacrylated vegetable oil (MO).



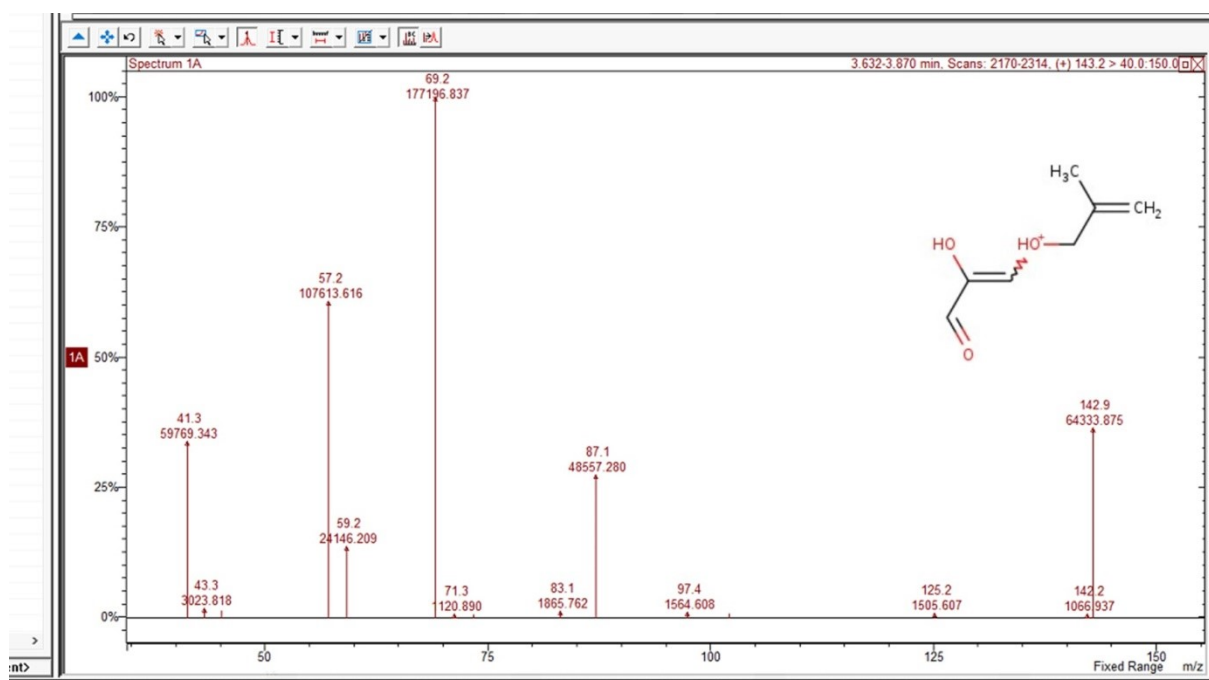
**Figure S2.** FT-IR spectrum of the methacrylated vegetable oil (MO).



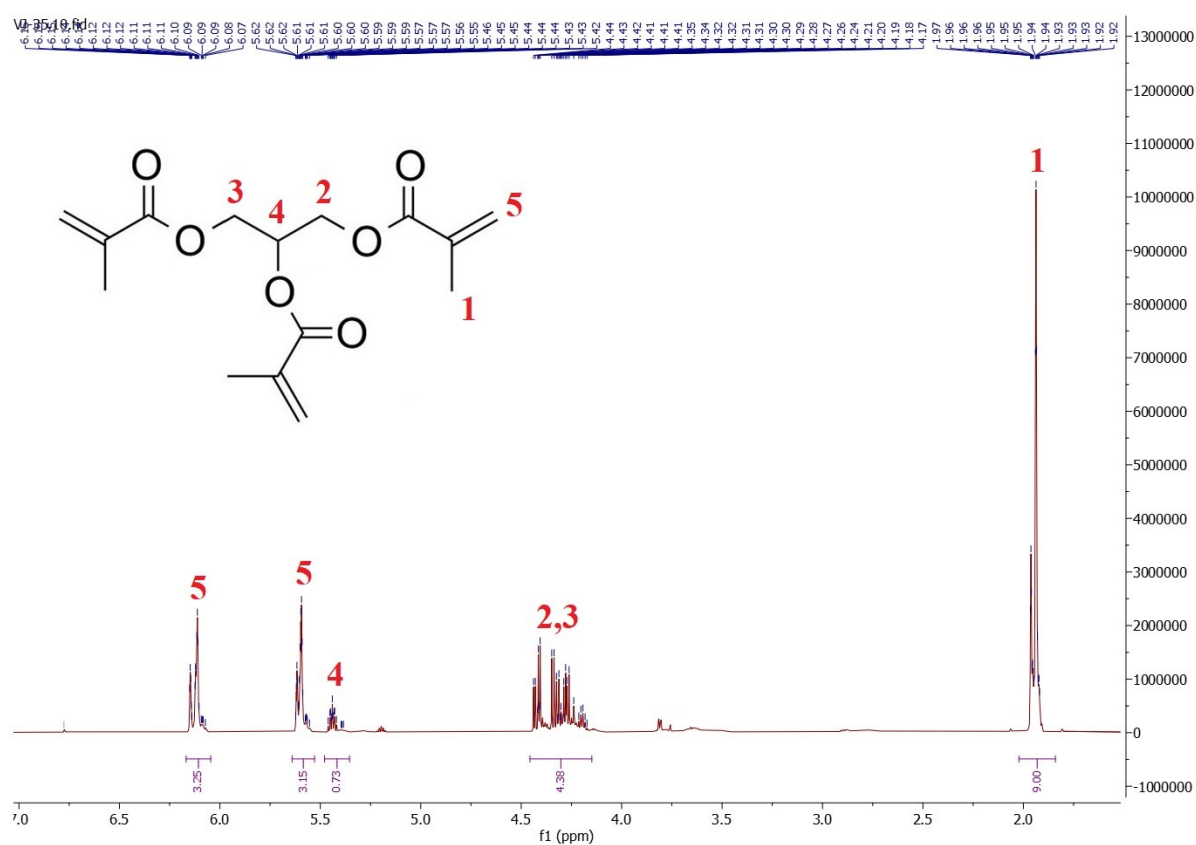
**Figure S3.**  $^1\text{H}$  NMR spectrum of glycerol monomethacrylate (MGLY).



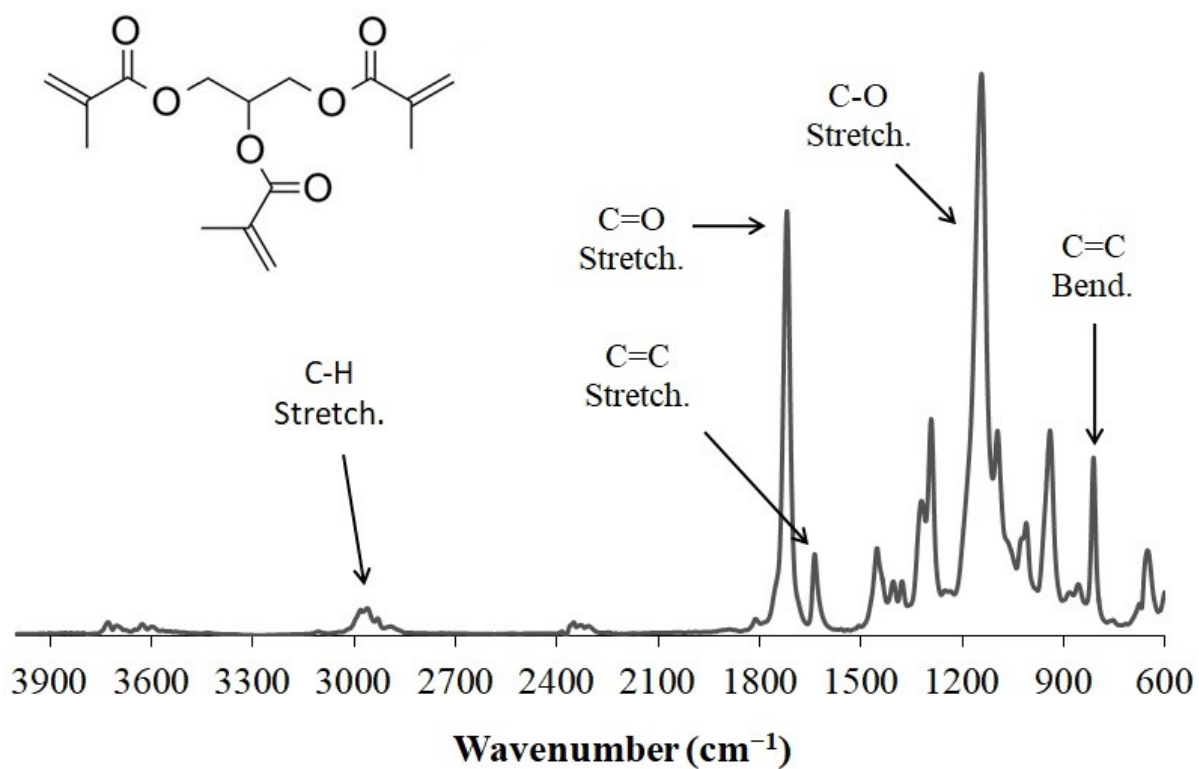
**Figure S4.** FTIR spectrum of glycerol monomethacrylate (MGLY).



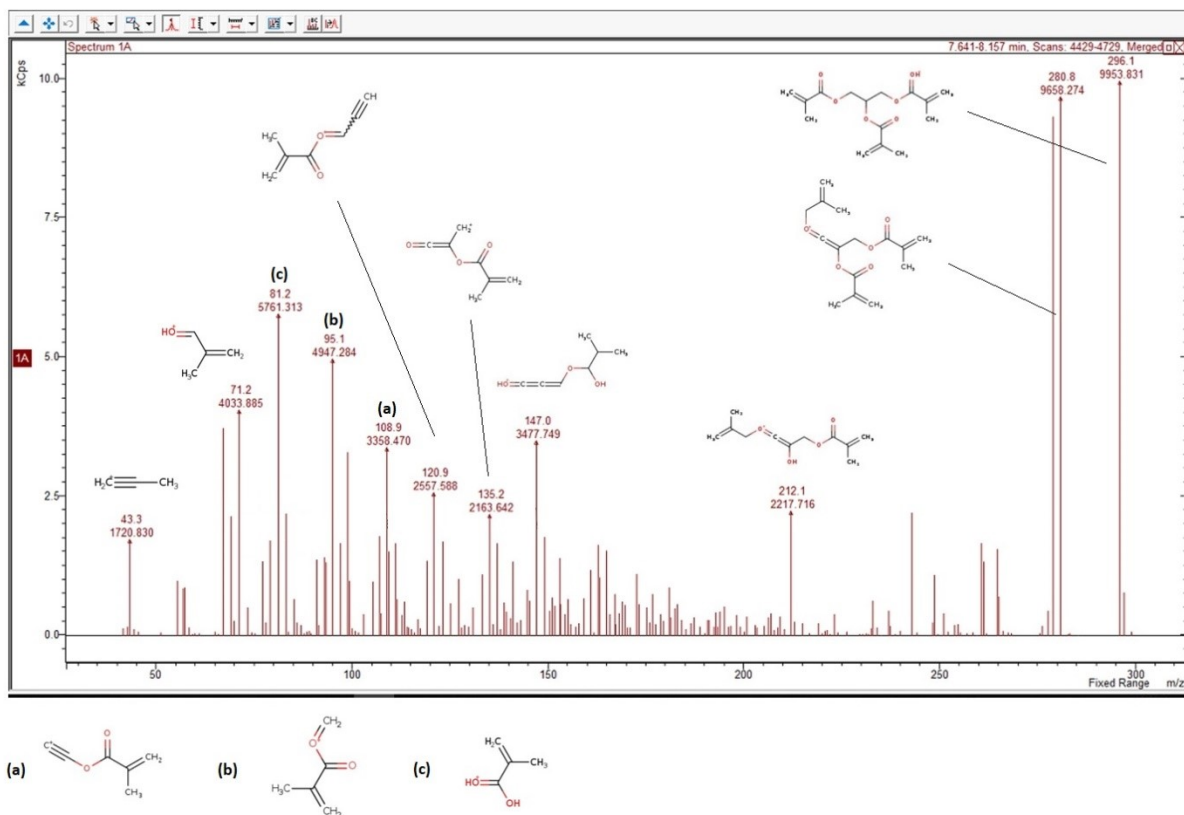
**Figure S5.** ESI-MS spectrum of glycerol monomethacrylate (MGLY).



**Figure S6.**  $^1\text{H}$  NMR spectrum of glycerol trimethacrylate (TGLY).

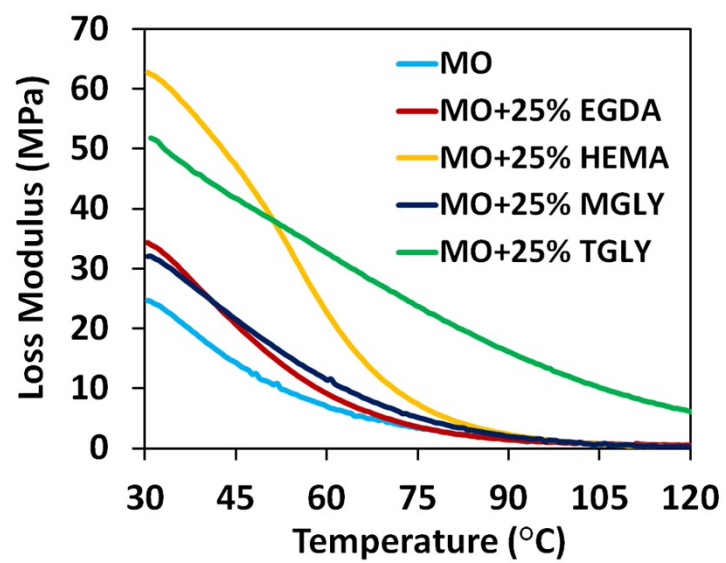


**Figure S7.** FTIR spectrum of glycerol trimethacrylate (TGLY).



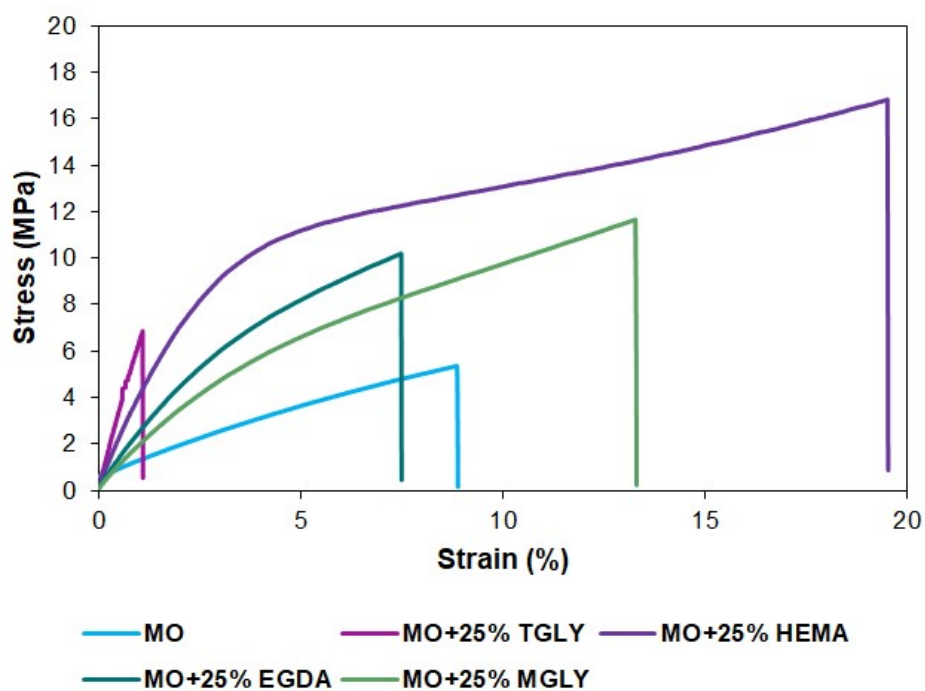
**Figure S8.** ESI-MS spectrum of glycerol trimethacrylate (TGLY).

## 2. Thermo-mechanical additional data

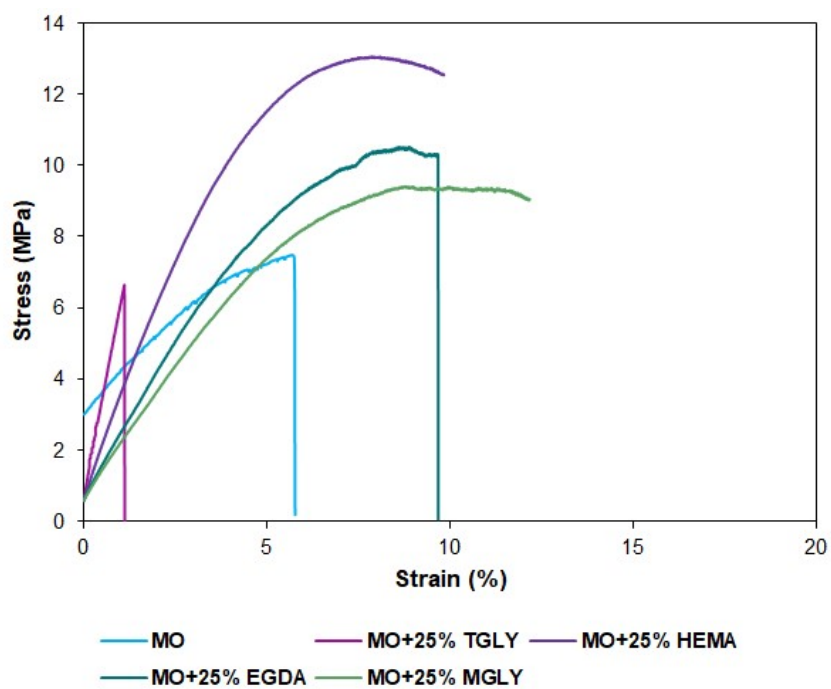


**Figure S9.** Loss moduli of the investigated 3D printed systems.

### 3. Thermo-mechanical investigation data



**Figure S10.** The stress-strain curves of the performed tensile tests.



**Figure S11.** The stress-strain curves of the performed flexural tests.