

1 Multifunctional Nanodrug-Enabled Mild Photothermal
2 Therapy for Enhanced Immunotherapy in Triple-Negative
3 Breast Cancer

4 Xinyue Du,^{‡acde} Ying Zhang,^{‡b} Bingxin Gu,^{‡acde} Ziyi Yang,^{acde} Xiaoping Xu,^{acde} Haibao Peng,^{*f} Shaoli
5 Song^{*acde} and Zhongyi Yang^{*acde}

6

7 ^a Department of Nuclear Medicine, Fudan University Shanghai Cancer Center, Shanghai 200032, China.

8 ^b Department of Anatomy, Histology and Embryology, Suzhou Vocational Health College, Suzhou
9 215000, China.

10 ^c Shanghai Engineering Research Center of Molecular Imaging Probes, Shanghai 200032, China.

11 ^d Department of Oncology, Shanghai Medical College, Fudan University, Shanghai 200032, China.

12 ^e Center for Biomedical Imaging, Fudan University, Shanghai 200032, China.

13 ^f Institute for Translational Brain Research, State Key Laboratory of Medical Neurobiology and MOE
14 Frontiers Center for Brain Science, Fudan University, Shanghai 200032, China.

15

16 [‡]These authors contributed equally to this work

17 ^{*} These are corresponding authors.

18 Haobao Peng, Institute for Translational Brain Research, State Key Laboratory of Medical Neurobiology
19 and MOE Frontiers Center for Brain Science, Fudan University, No. 270 Dongan Road, Xuhui District,
20 Shanghai, China, Email haibaopeng@gmail.com;

- 1 Shaoli Song, Department of Nuclear Medicine, Fudan University Shanghai Cancer Center, No. 270
- 2 Dongan Road, Xuhui District, Shanghai, China, Email shaoli-song@163.com;
- 3 Zhongyi Yang, Department of Nuclear Medicine, Fudan University Shanghai Cancer Center, No. 270
- 4 Dongan Road, Xuhui District, Shanghai, China, Email yangzhongyi21@163.com

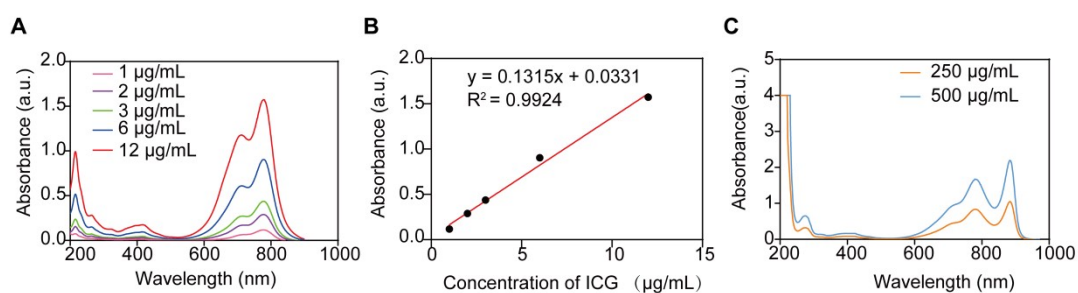


Fig. S1 (A) UV-Vis-NIR spectra of free ICG in aqueous solution with different concentrations. (B) The standard curve of absorption of ICG as a function of concentration, the absorption was measured at 808 nm. (C) UV-vis absorption spectra of ICG@Tf-DTPA-Gd NPs.

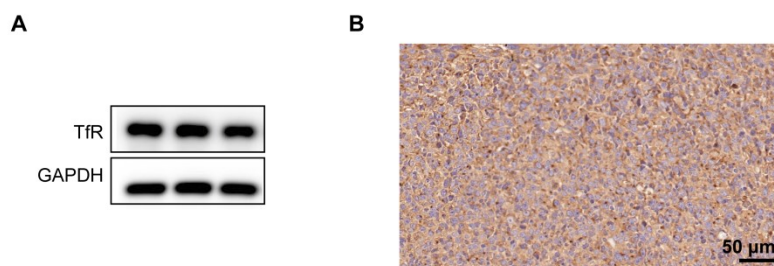


Fig. S2 (A) TfR expression of 4T1 cells. (B) TfR expression in 4T1 primary tumor tissues.

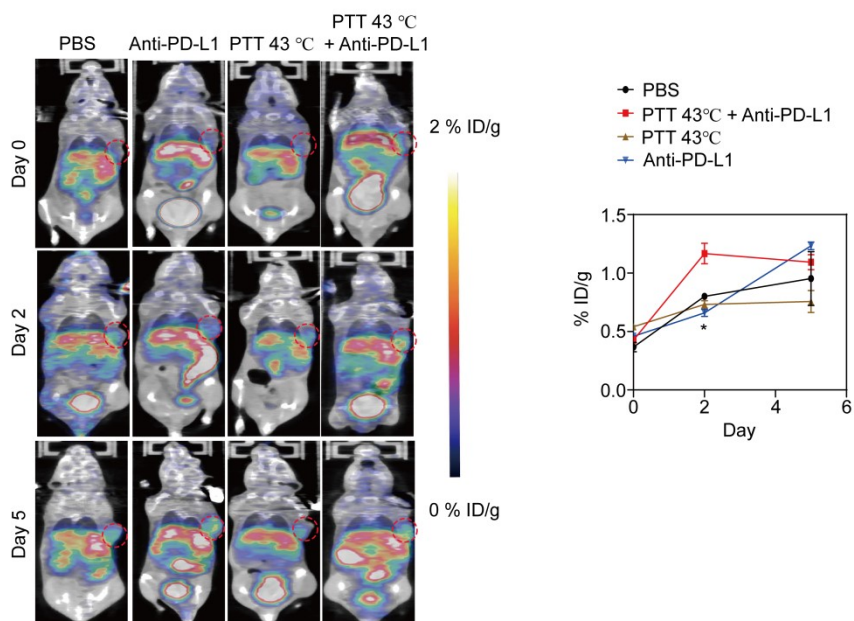


Fig. S3 ^{68}Ga -NOTA-GZP micro PET/CT images and the quantitative analysis of tumor uptake at

different times after different treatments.

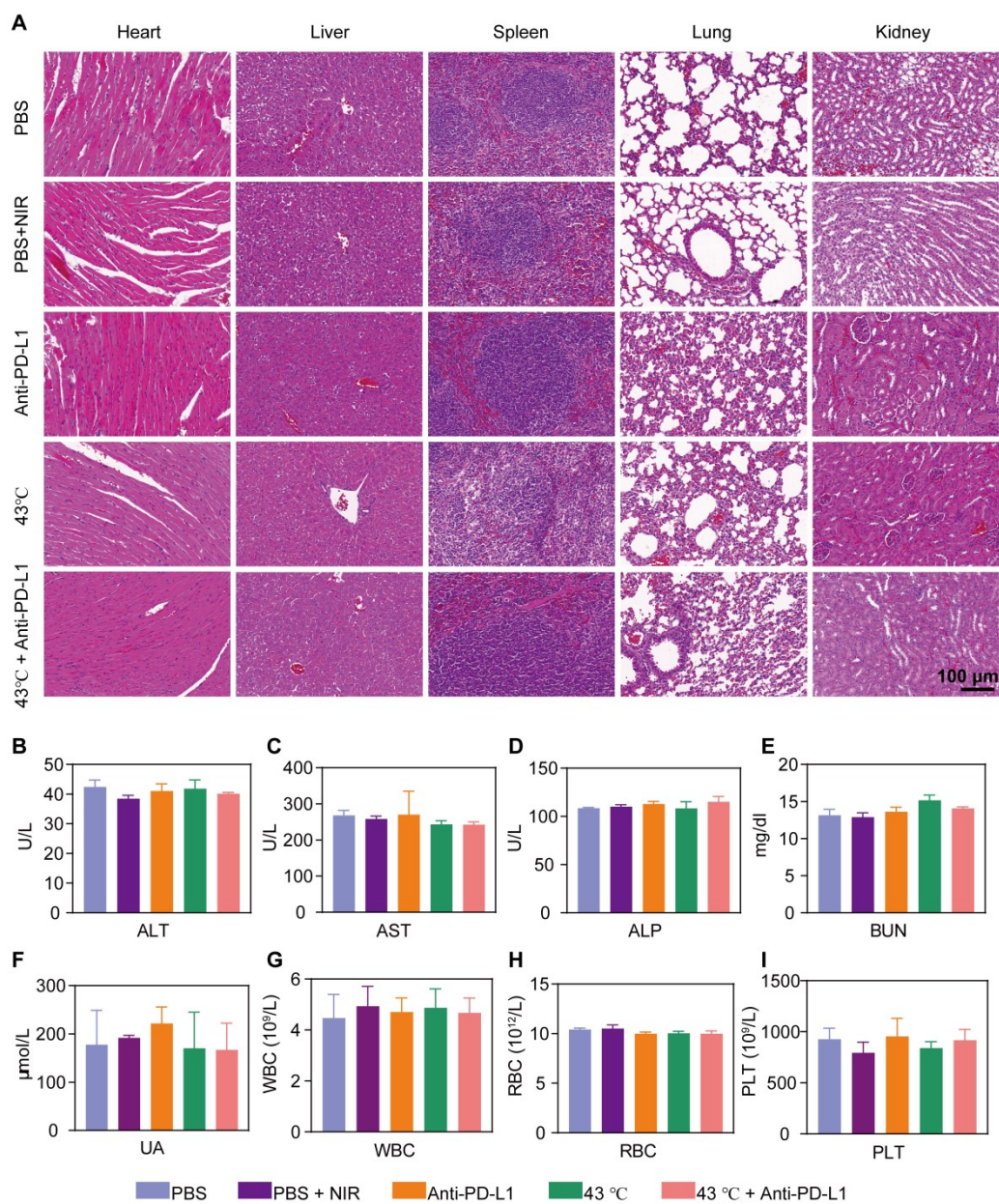


Fig. S4 *In vivo* toxicity evaluation. (A) H&E-stained slice images of major organs. (B-F) Blood biochemistry data. Alanine transaminase (ALT), aspartate aminotransferase (AST), alkaline phosphatase (ALP), blood urea nitrogen (BUN), and uric acid (UA). (G-I) Blood parameters data. White blood cells (WBC), Red blood cells (RBC), and Platelets (PLT).