

Supplementary Information

Lanthanum-Loaded ZIF Nanomaterials for Caries Prevention

Han Xiao,^{†a} Yuping Qian,^{†a} Lijun Zhao,^a Yiman Tang,^b Yuan Pan,^c Yunzi Long,^a

Shihan Li,^a Yukun Chen,^a Jiale Sun,^a Chao Yuan,^{*d} Ludan Zhang^{*e} and Wenshu Ge^{*a}

^a. Department of General Dentistry II, Peking University School and Hospital of Stomatology, Beijing 100081, P.R. China. E-mail: wenshuge@bjmu.edu.cn

^b. Fourth Clinical Division, Peking University School and Hospital of Stomatology, National Center of Stomatology, National Clinical Research Center for Oral Diseases, National Engineering Research Center of Oral Biomaterials and Digital Medical Devices, Beijing 100081, P.R. China.

^c. Seventh Clinical Division, Peking University School and Hospital of Stomatology, Beijing 100081, P.R. China.

^d. Department of Preventive Dentistry, Peking University School and Hospital of Stomatology, National Center for Stomatology, National Clinical Research Center for Oral Diseases, National Engineering Research Center of Oral Biomaterials and Digital Medical Devices, Beijing 100081, China. Email: chaoyuan@bjmu.edu.cn

^e. First Clinical Division, Peking University School and Hospital of Stomatology; National Center for Stomatology; National Clinical Research Center for Oral Diseases; National Engineering Research Center of Oral Biomaterials and Digital Medical Devices, Beijing 100081, P.R. China. E-mail: zhangludan@bjmu.edu.cn

[†] These authors have contributed equally to this work.

Sample	Weight (g)	Zn (mg/L)	Zn (%)	La (mg/L)	La (%)
20%La@ZIF	0.06	1.99	8.33	7.32	30.67
40%La@ZIF	0.04	0.76	4.62	5.06	30.91
60%La@ZIF	0.04	0.79	5.48	4.57	31.65

Figure S1 ICP elemental ratio table of La@ZIF.

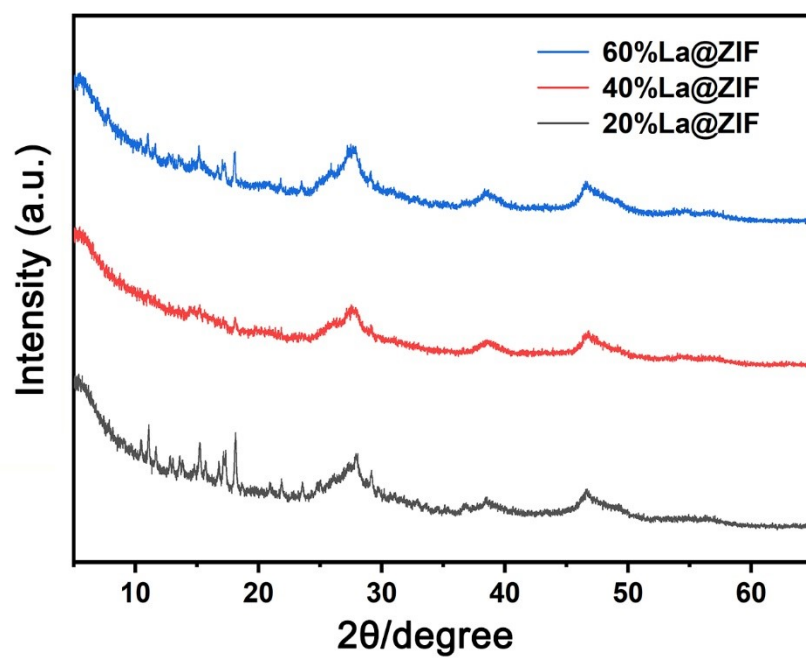


Figure S2 XRD patterns of La@ZIF nanoparticles.

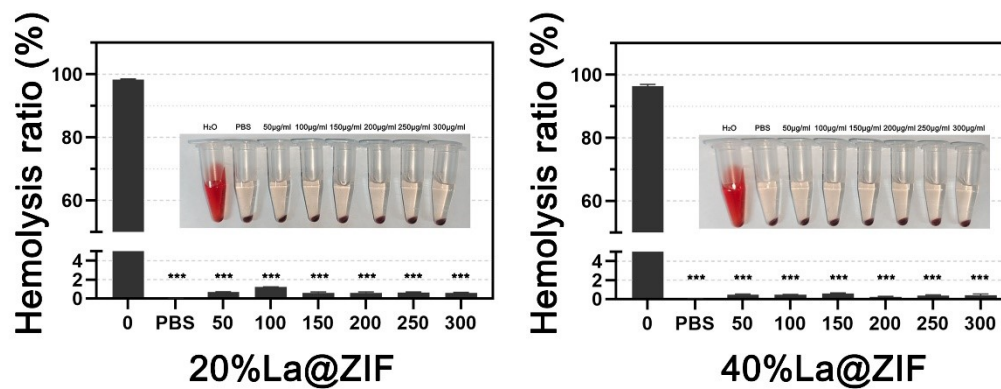


Figure S3 Hemolysis assay of 20%La@ZIF and 40%La@ZIF nanoparticles.

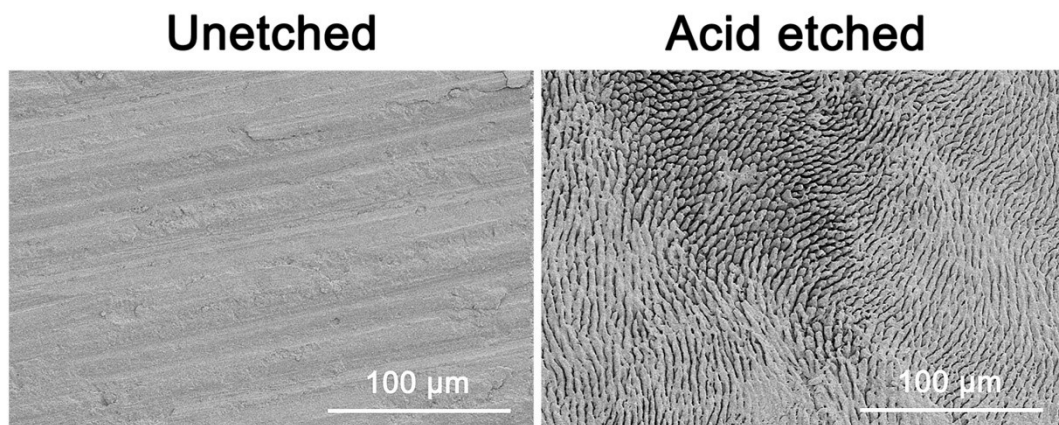


Figure S4 SEM images of enamel surfaces before and after acid etching.

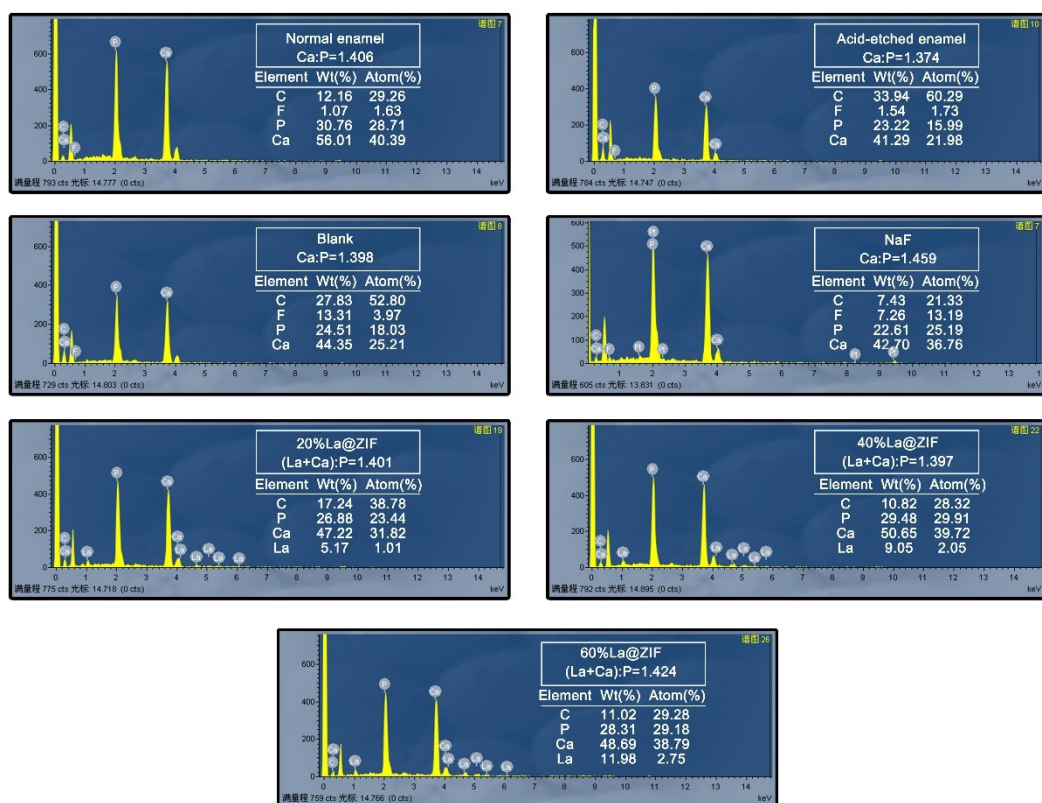


Figure S5 EDS elemental mapping and Ca/P ratio of enamel surfaces in each group after remineralization treatment.

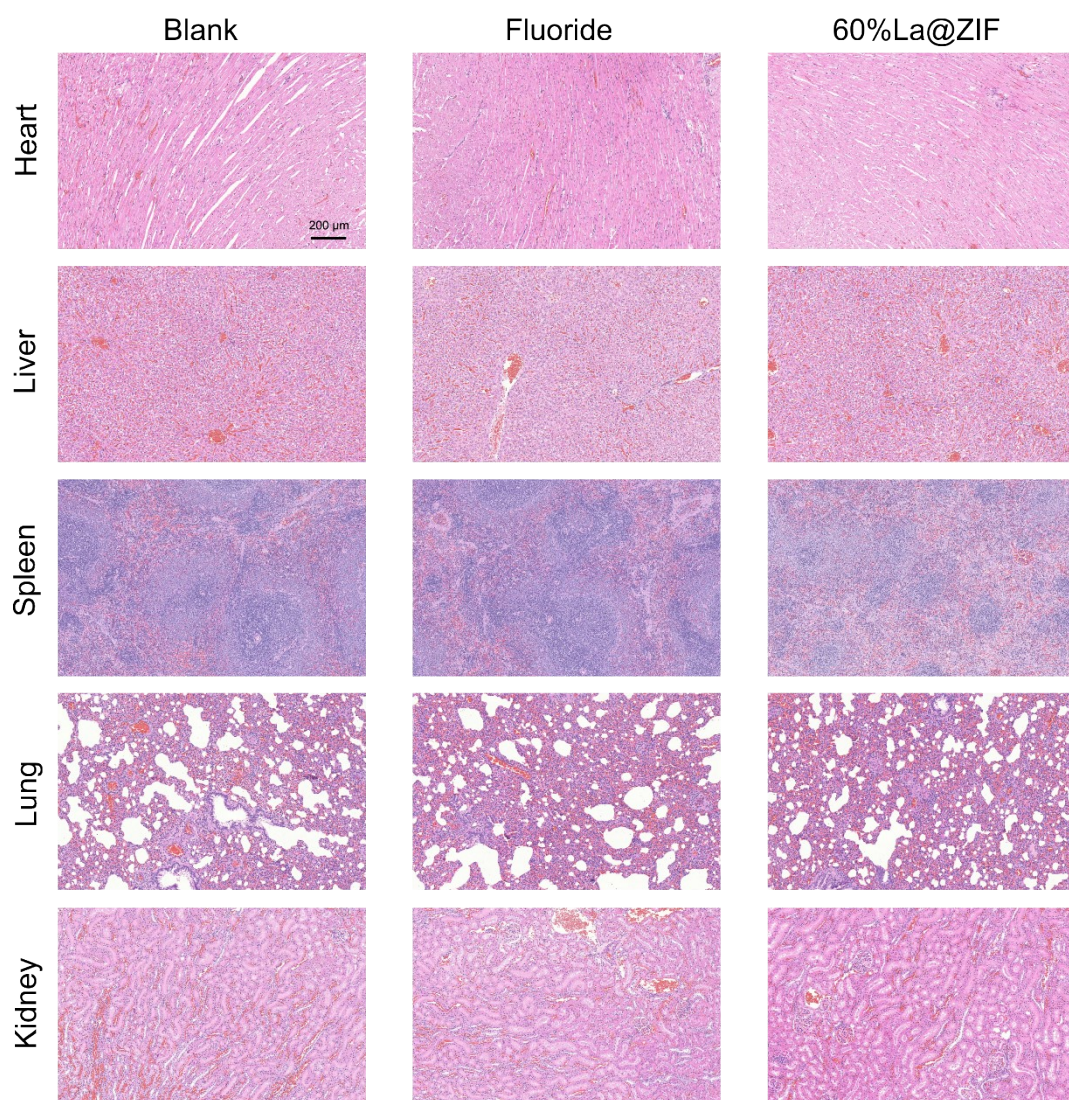


Figure S6 Hematoxylin and eosin (H&E) staining of heart, liver, spleen, lung, and kidney tissues after treatment.