

Supporting Information

Metal-Ion Driven Self-Assembled pH-Responsive Polyprodrugs via Click Polymerization for Tumor Theranostics

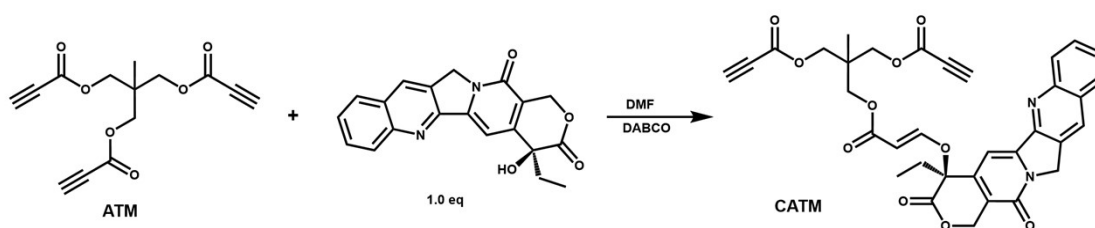
Daquan Wang^{a*}, Jiali Wang^a, Yunpeng Luo^{b,c}, Gang Tan^a, Weixun Duan^b

^a School of Chemistry, Xi'an Jiaotong University, 710049, Xi'an, China.

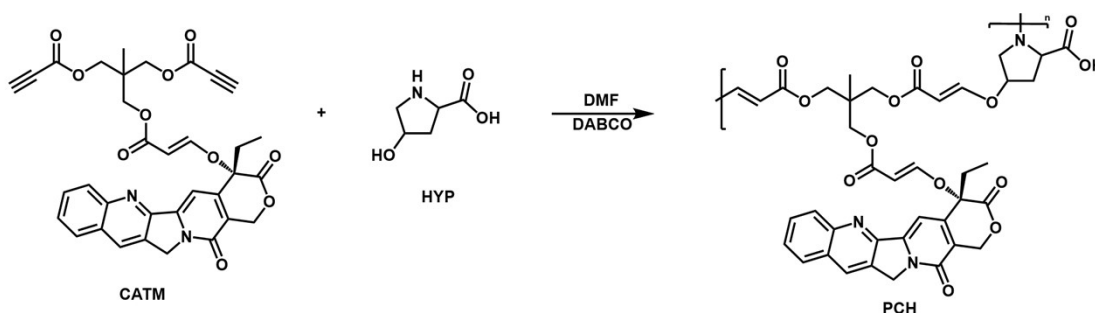
^b Clinical School of Thoracic, Tianjin Medical University, Tianjin, 300070, P. R. China.

^c Department of Cardiovascular Surgery, Xijing Hospital of Air Force Military Medical University, Xi'an, Shaanxi, 710032, P. R. China

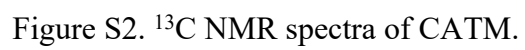
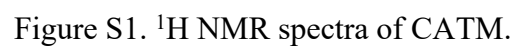
Corresponding author: E-mail: wangdaquan2019@mail.xjtu.edu.cn



Scheme S1. Synthesis route of CATM.



Scheme S2. Synthesis route of PCH.



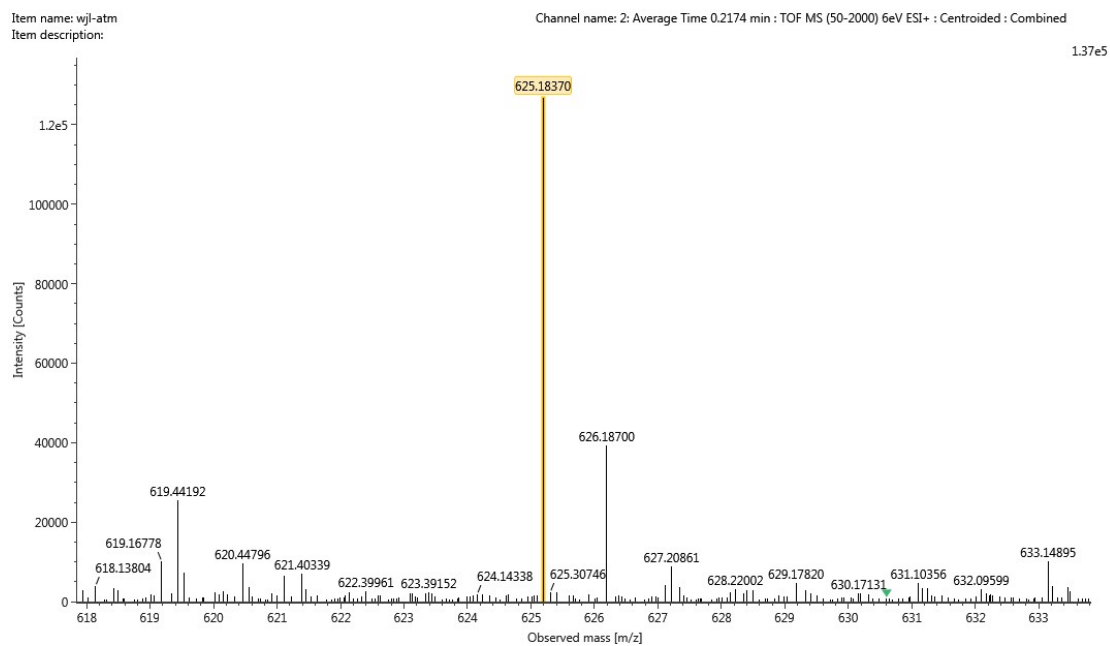


Figure S3. HR-MS spectrum of CATM.

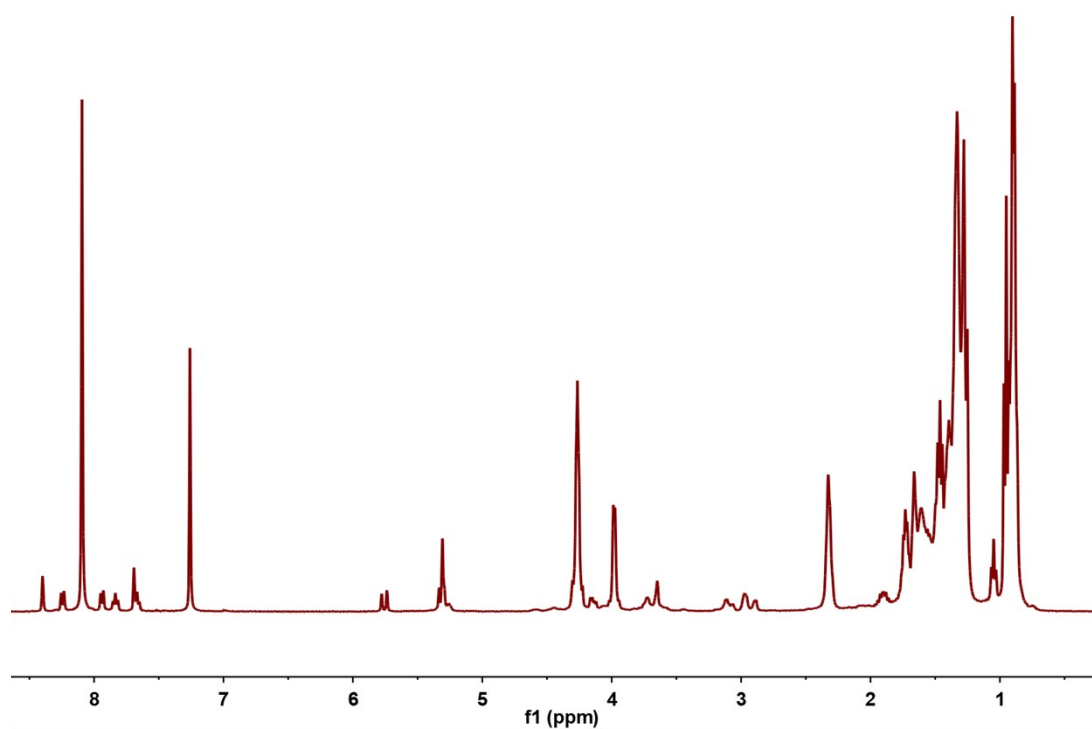


Figure S4. ¹H NMR spectra of PCH.

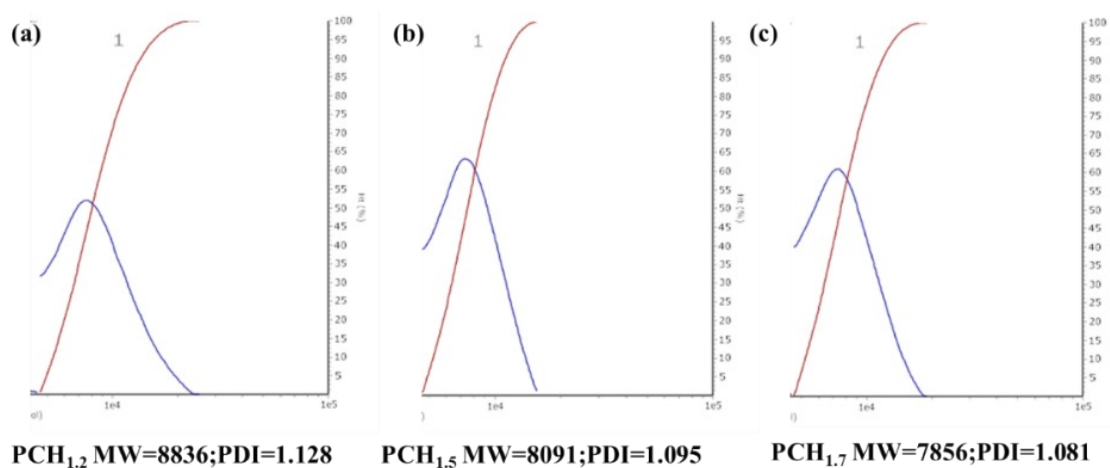


Figure S5. GPC spectra of synthesized PCH under different molar ratio of CATM and HYP. (a) $\text{PCH}_{1.2}$, (b) $\text{PCH}_{1.5}$, (c) $\text{PCH}_{1.7}$.

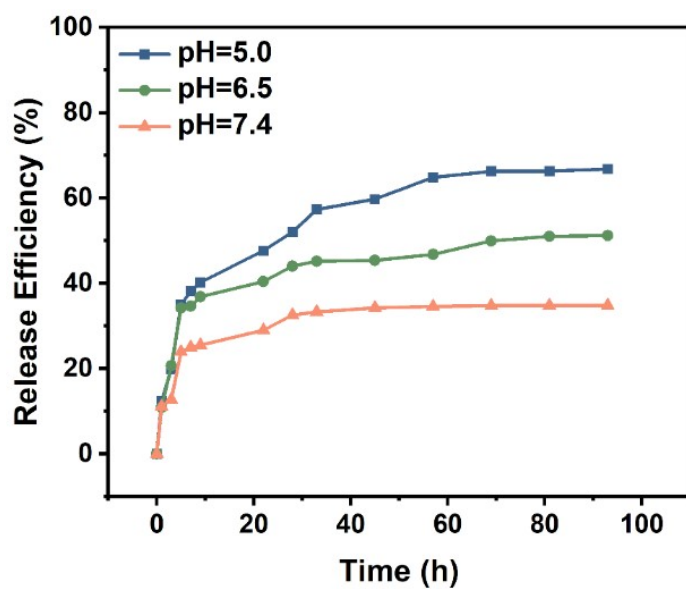


Figure S6. pH responsive controlled release characterization of CPT from PCH in different PBS solutions.

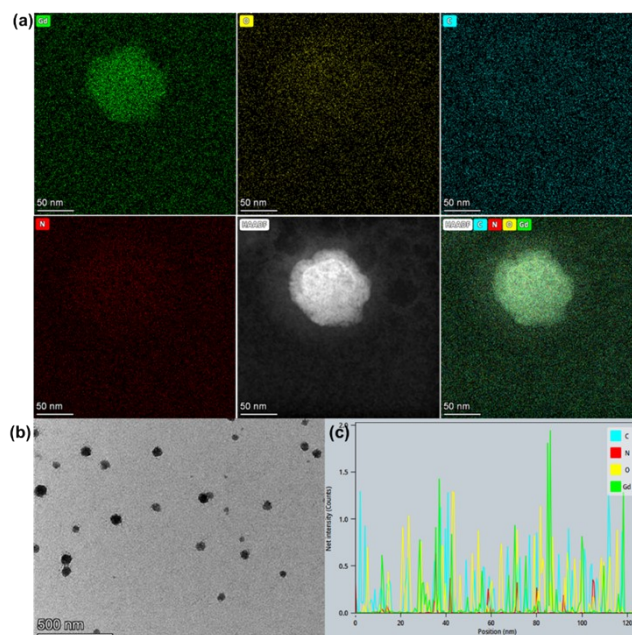


Figure S7. (a) HAADF-TEM image and Element mapping images of metal-ion derived assemble of PCH1.5 with Gd^{3+} ions under molar ratio of 1:1. (b): TEM image of PCH@Gd in (a), (c) EDS spectra of PCH@Gd in (a).

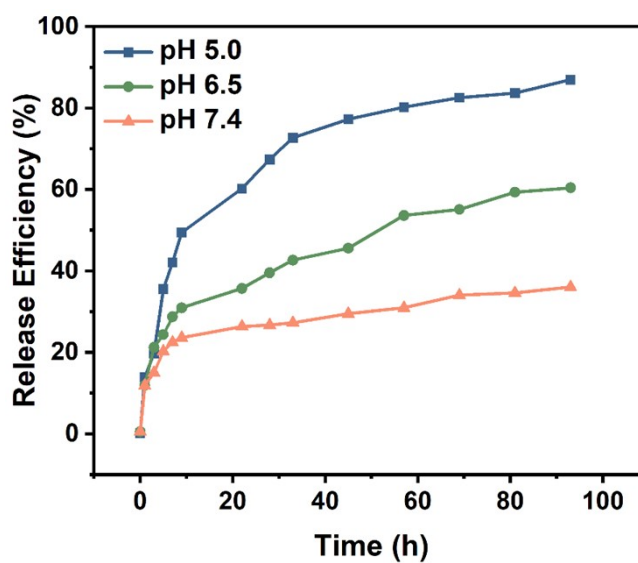


Figure S8. pH responsive controlled release characterization of Gd from PCH@Gd in different PBS solutions.