

Supporting information for:

Achieving clear ferroelectric polarization reversal in room-temperature multiferroic ϵ -Fe₂O₃ system through grain boundary engineering

Tsukasa Katayama^{1,2*}, Shintaro Yasui^{3*}, Takahisa Shiraishi^{4,5}, Takanori Kiguchi^{4,5}, Badari Narayana Rao⁶, Yosuke Hamasaki⁷, and Mitsuru Itoh^{6,8*}

¹Research Institute for Electronic Science, Hokkaido University, N20W10, Kita, Sapporo 001-0020, Japan

²JST-PRESTO, Kawaguchi, Saitama 332-0012, Japan

³Laboratory for Zero-Carbon Energy, Institute of Science Tokyo, 2-12-1, Ookayama, Meguro-ku, Tokyo 152-8550, Japan

⁴Department of Materials Science, Graduate School of Science and Technology, Kumamoto University, 2-39-1 Kurokami, Chuo-ku, Kumamoto 860-8555, Japan

⁵Magnesium Research Center, Kumamoto University, 2-39-1 Kurokami, Chuo-ku, Kumamoto 860-8555, Japan

⁶Laboratory for Materials and Structures, Institute of Science Tokyo, 4259, Nagatsuta-cho, Midori-ku, Yokohama 226-8501, Japan

⁷Department of Applied Physics, National Defense Academy, Yokosuka 239-8686, Japan

⁸Environmental Safety Center, Institute of Science Tokyo, 4259 Nagatsuta-cho, Midori-ku, Yokohama 226-8501, Japan

*Corresponding authors: katayama@es.hokudai.ac.jp, yasui.s.aa@m.titech.ac.jp, mitsuru_itoh@icloud.com

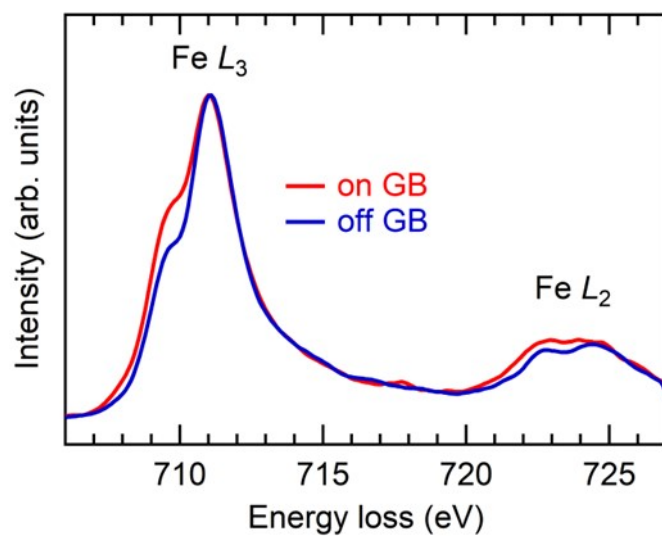


Figure S1. On- and off-GB Fe L_3 -edge EELS spectra near the 0-120°-type grain boundaries (GBs).

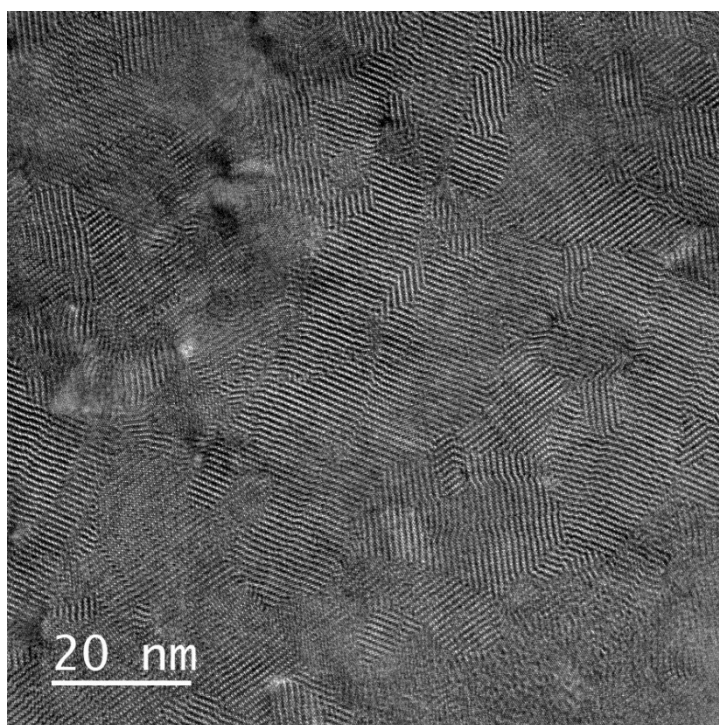


Figure S2. Plan-view TEM image of the Sc-doped ϵ -Fe₂O₃ film.