

(a)



(b)

Fig. S1 Data collection related images, (1a) Map of all bus routes from Athens and UGA Transit (Colors represent different bus routes), (1b) Sensor on bus bike rack

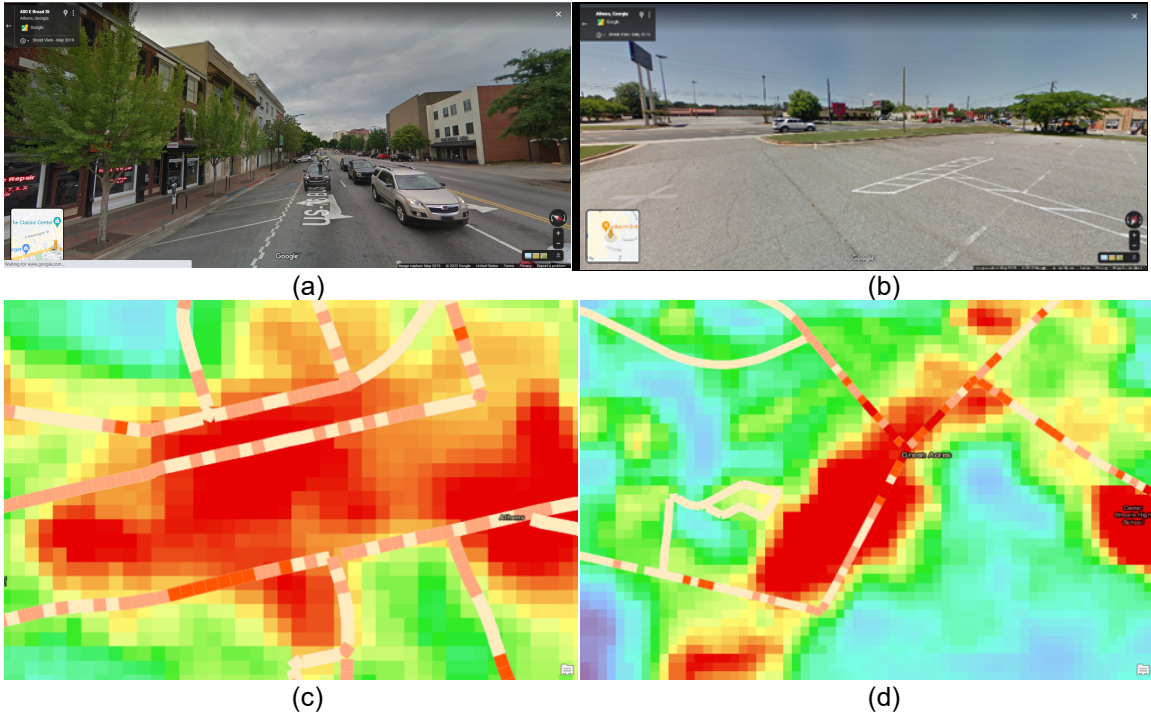
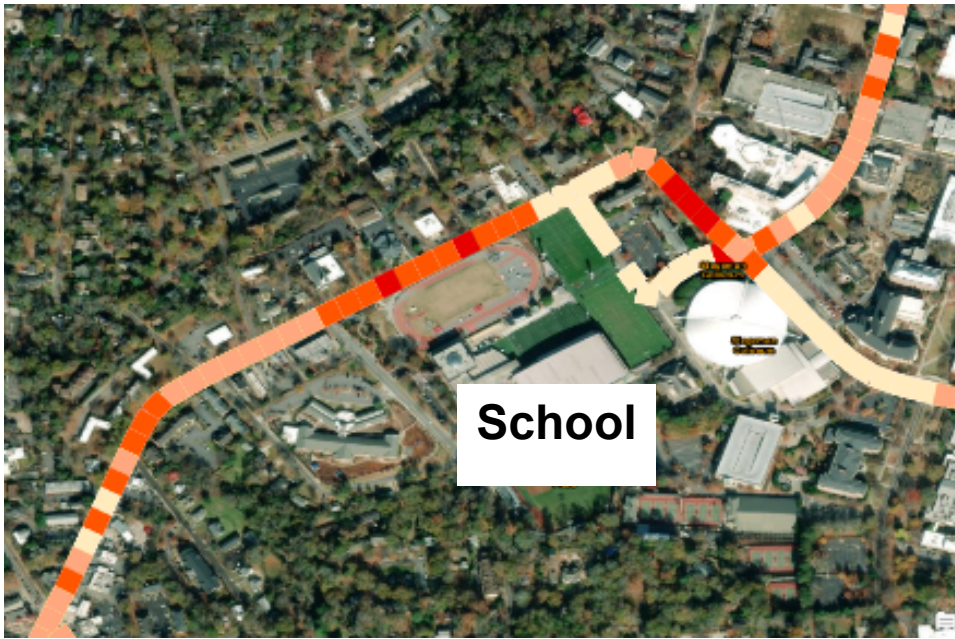


Fig. S2. Google Street View images of (a) Downtown, and (b) shopping plazas, and Hotspots overlaying LST images of (c) Downtown, and (d) the plaza



(a)



(b)

Fig. S3. Elementary School with athletic complex near the campus (a) Hotspot Map, (b) corresponding Google Street View image

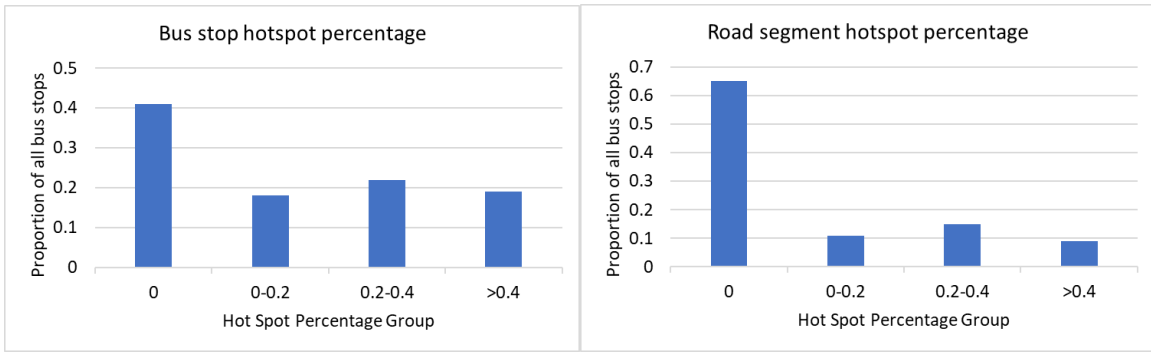


Fig. S4 Chances of a bus stop being a hotspot (left) vs. Chances of a road segment being a hotspot (right) with corresponding hotspot percentage of bus stops

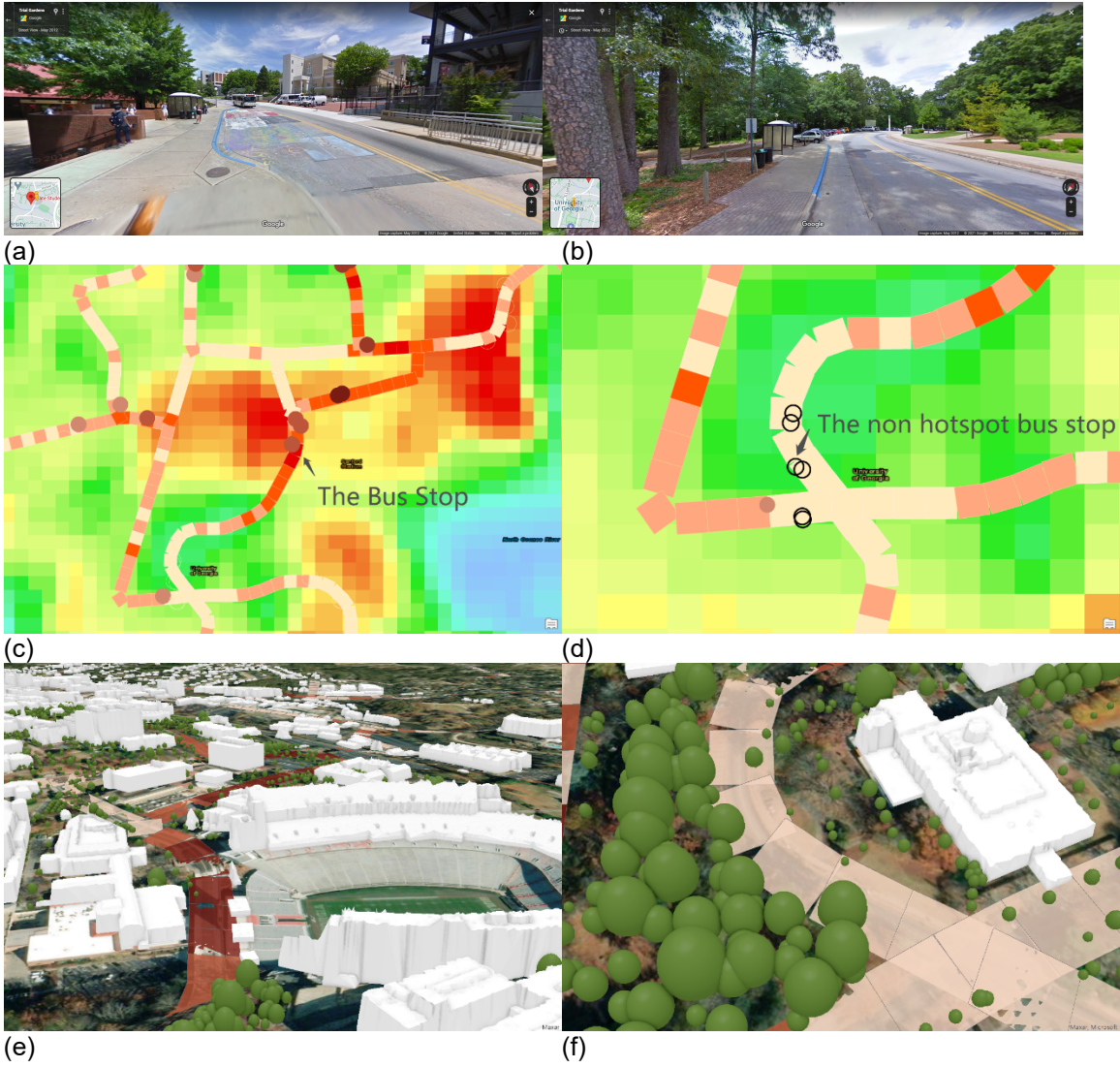


Fig. S5 Google Street View images of (a) a hotspot bus stop, and (b) a non-hotspot bus stop, and LST images of (c) a hotspot bus stop, and (d) a non-hotspot bus stop, with 3D city model of (e) a hotspot bus stop, and (f) a non-hotspot bus stop

Table S1. Athens Weather Normals from the NWS/FAA automated surface observing station at Ben Apps Airport

Month	Mean Daily Max Temperature (°C)	Standard Deviation (°C)
5	27.6	1.3
6	31.5	1.8
7	33	1.6
8	32.1	1.7
9	28.9	1.3
10	23.5	1.4