

Supplementary Materials for  
**Construction and application of a microfluidic-droplet system for high-throughput screening of amylase-producing strains from jiuqu**

Honghua Li<sup>a</sup>, Miao Zhang<sup>a</sup>, Qiyu Wu<sup>a</sup>, Ying Wang<sup>b,\*</sup>, and Ling Lin<sup>a,\*</sup>

<sup>a</sup> MOE Key Laboratory of Geriatric Nutrition and Health, Department of Bioengineering, Beijing Technology and Business University, Beijing, 100048, China.

<sup>b</sup> Niulanshan Distillery, Beijing Shunxin Agriculture Company Limited, Beijing 101301, China.

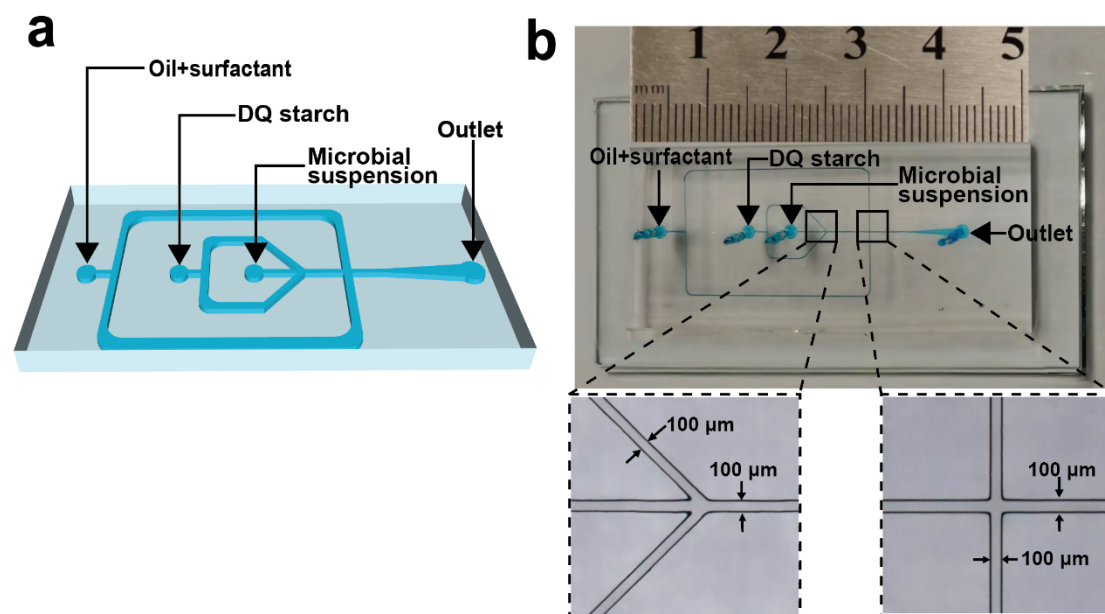
\*Email: [linling@btbu.edu.cn](mailto:linling@btbu.edu.cn) (L. Lin)

**The file includes:**

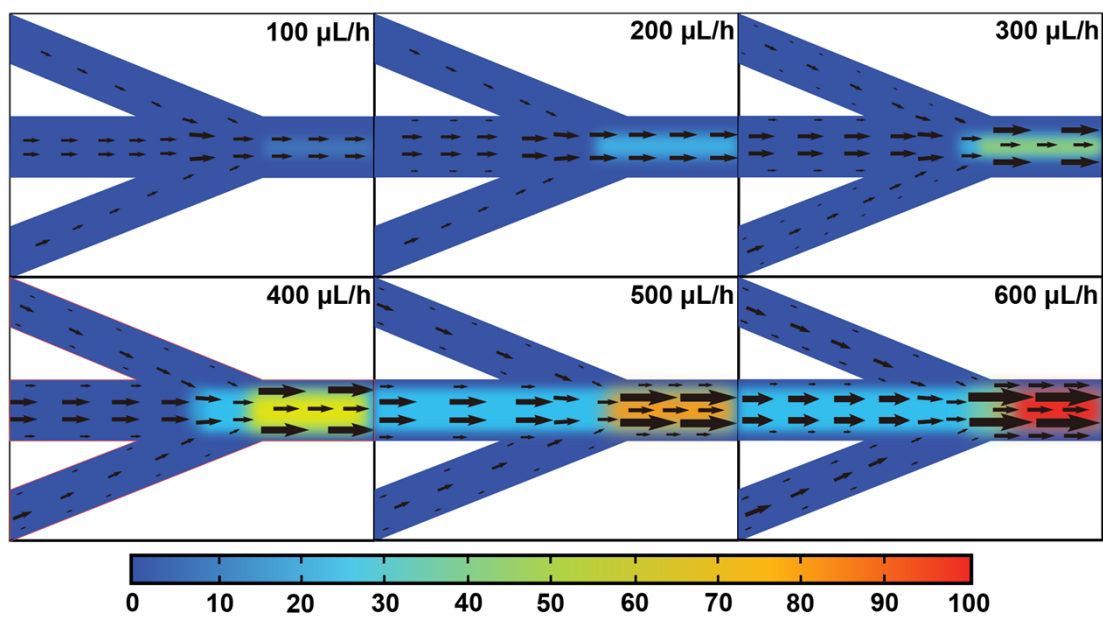
Figs. S1 to S5

**Other Supplementary Material for this manuscript includes the following:**

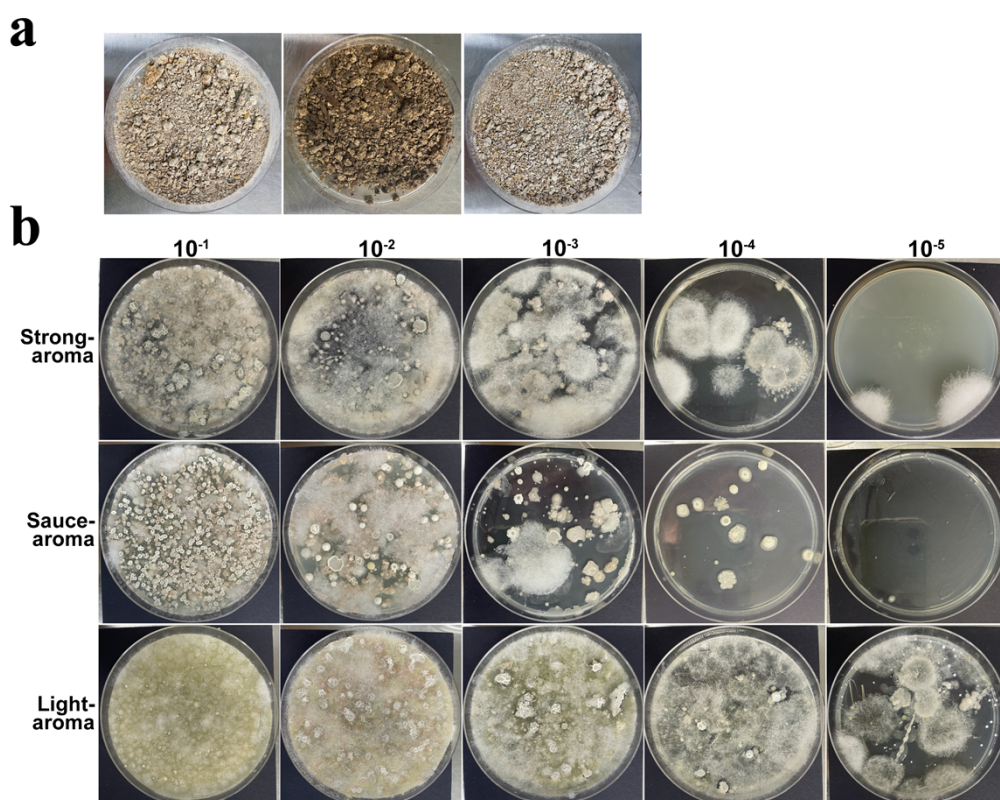
Movies S1



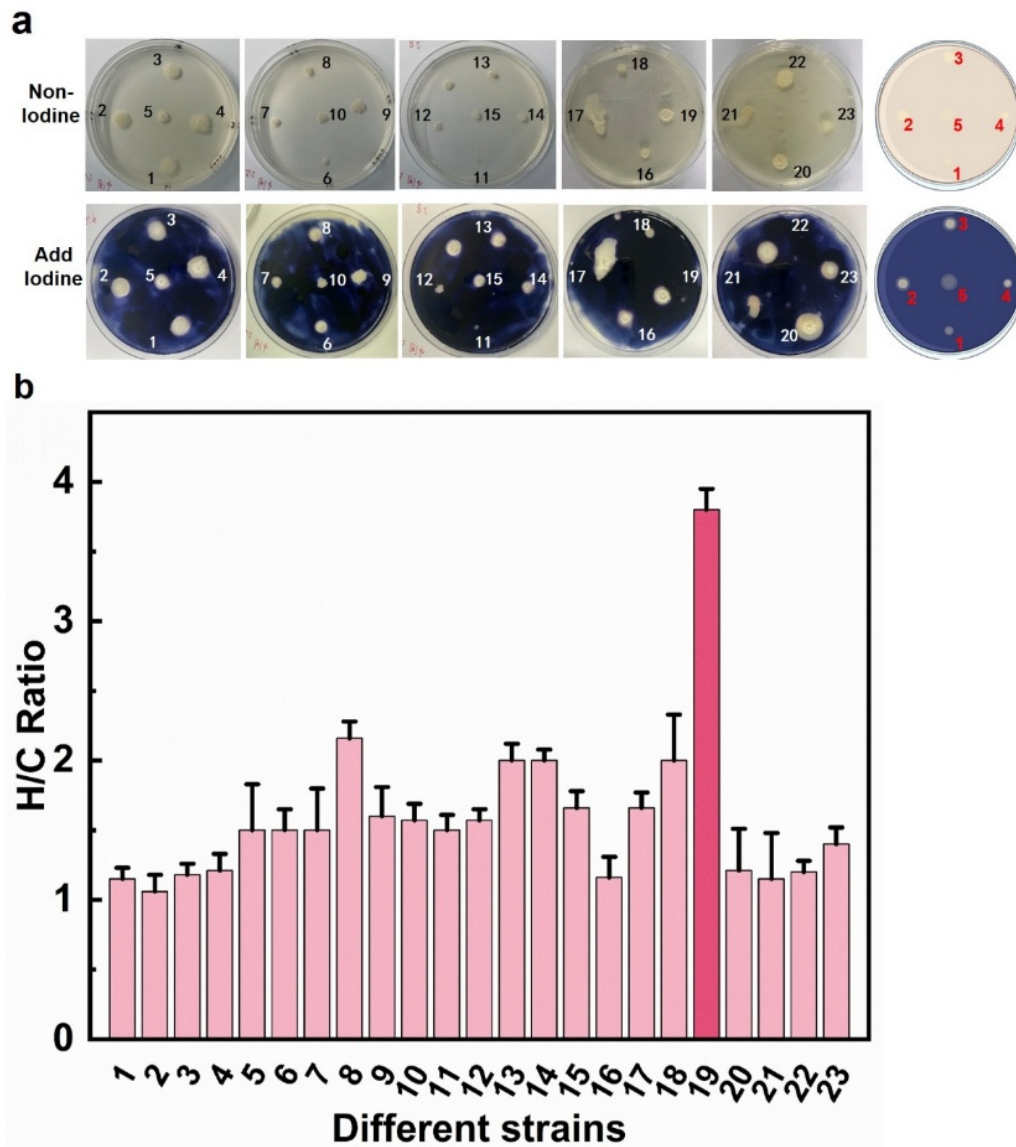
**Fig. S1.** Design schematic and physical image of the microfluidic chip used for generating microbial-starch droplets. (a) Chip schematic diagram; (b) Chip physical diagram.



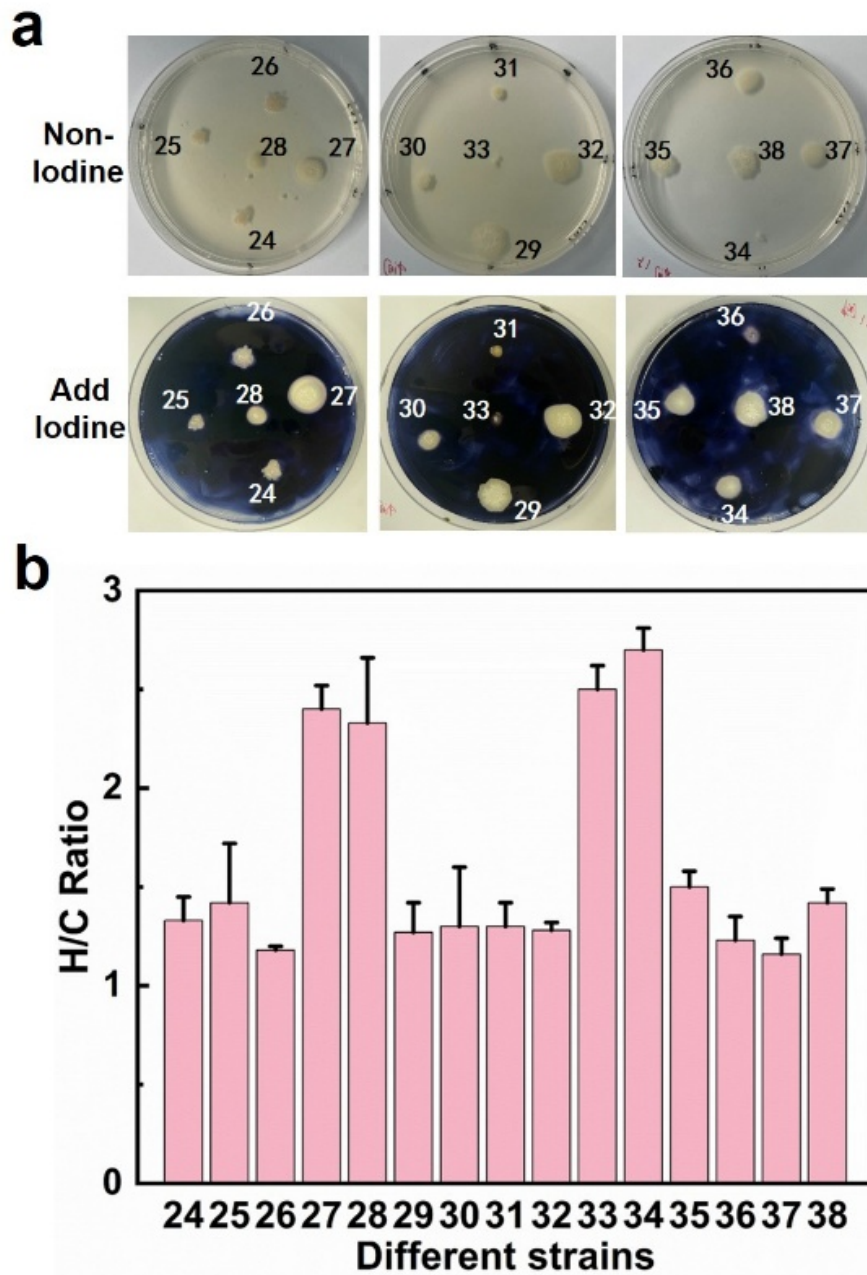
**Fig. S2.** Microfluidic droplet generation under different aqueous phase flow rates.



**Fig. S3.** Samples of different aroma types of jiuqu and microbial isolation and cultivation. (a) 5 g jiuqu samples of strong-aroma, sauce-aroma, and light-aroma types; (b) Plate culture of jiuqu samples with different dilution gradient.



**Fig. S4.** Observation of the clean zone of the strains obtained by microfluidic droplets and the histogram of H/C value distribution. (a) Detection of clean zone of the strains after adding iodine solution; (b) Distribution of H/C ratios among amylase-producing isolates.



**Fig. S5.** Observation of the clean zone of the traditional plate culture-derived strains and the histogram of H/C values distribution. (a) Detection of clean zone of the strains after adding iodine solution; (b) Distribution of H/C ratios among amylase-producing isolates.