

Figure 1D

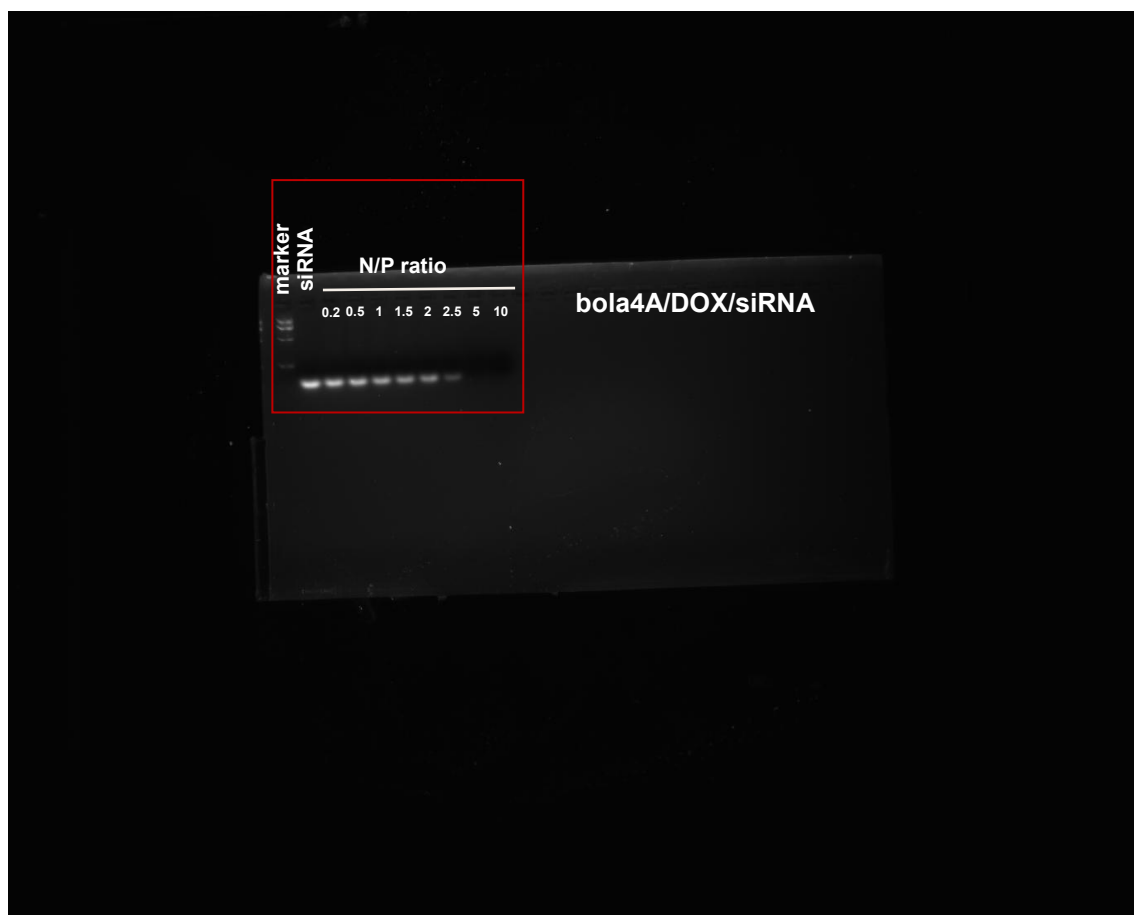
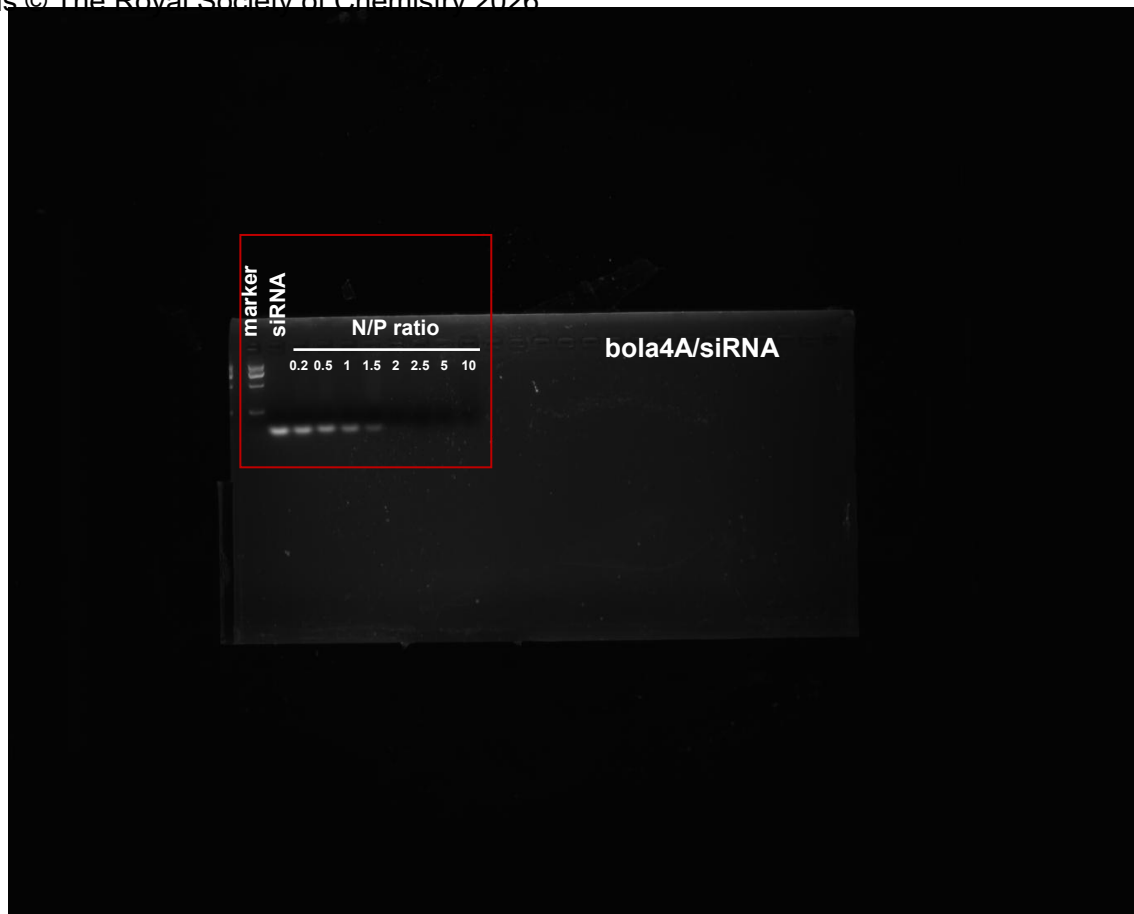


Figure 1D The gel figure was obtained by cropping the original data.

Figure 1F

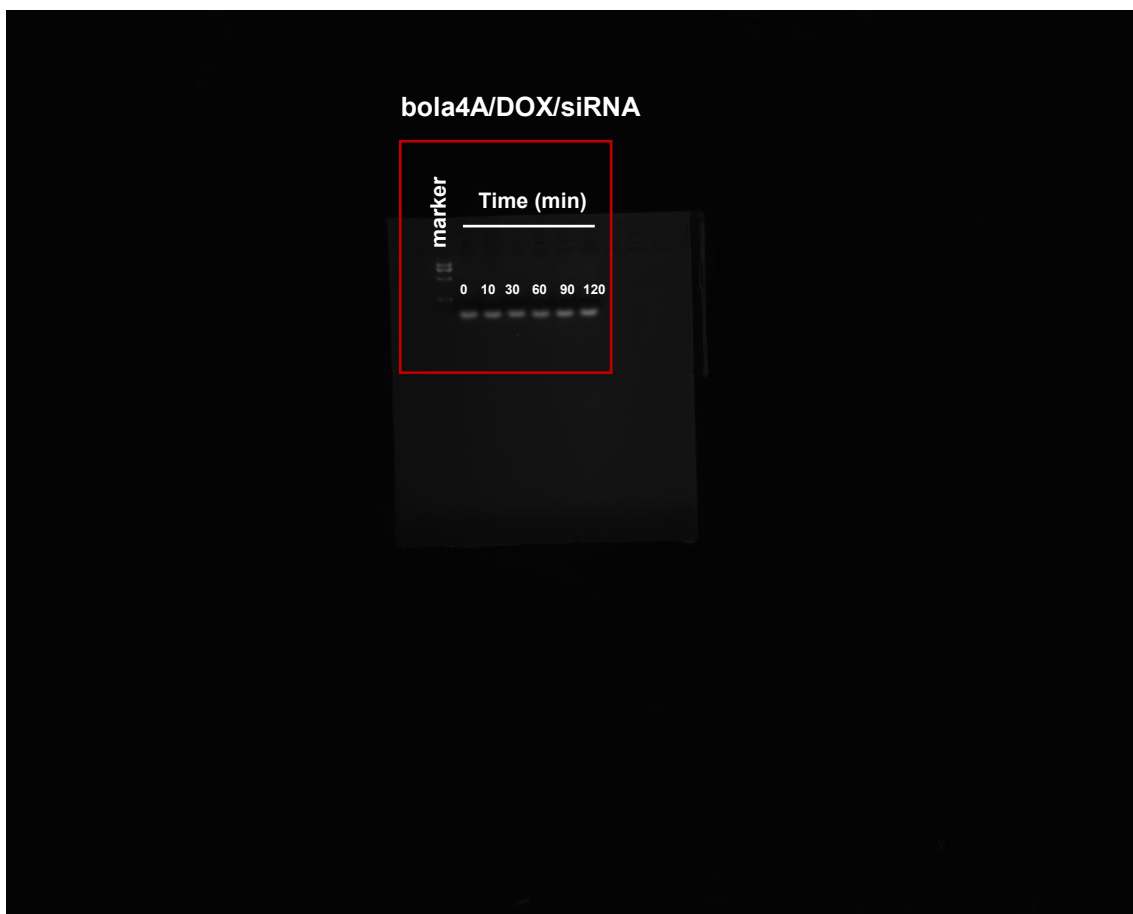
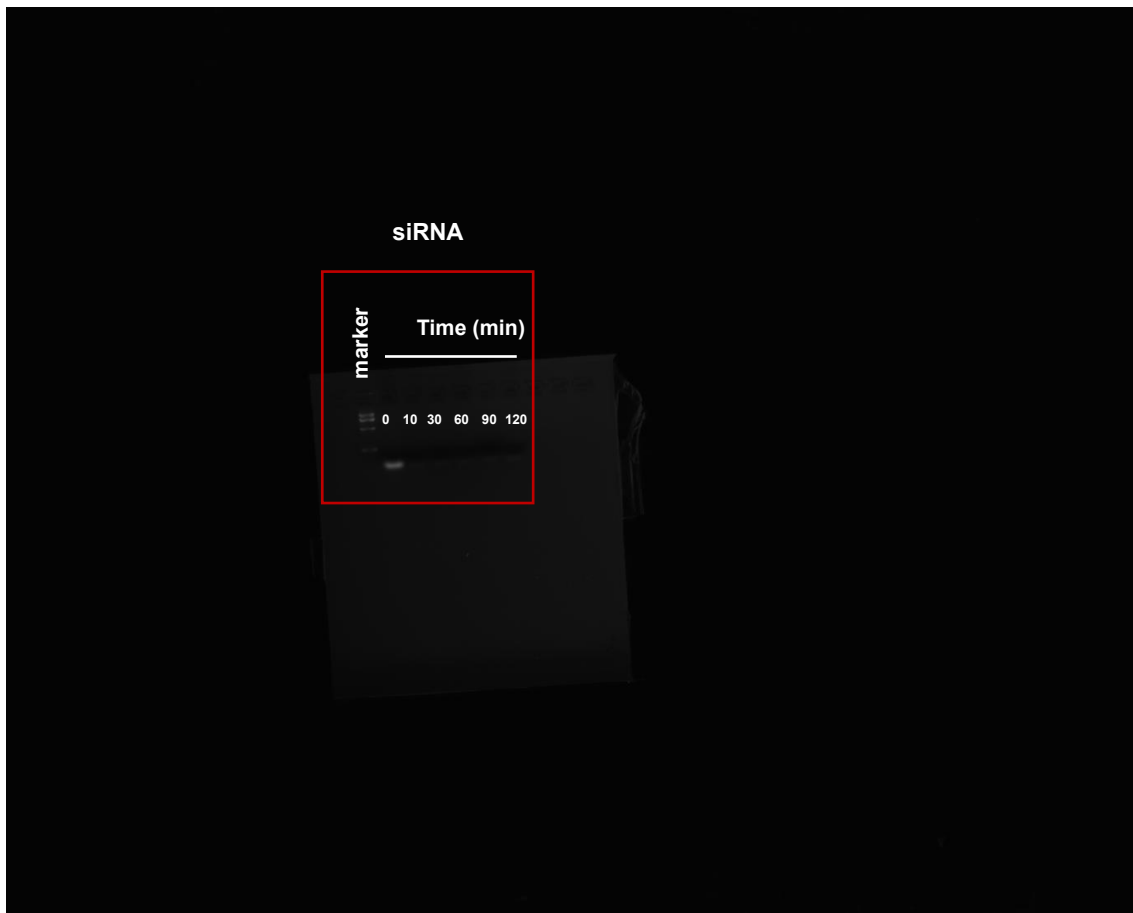


Figure 1F The gel figure was obtained by cropping the original data.

Figure 1G

CD47 protein downregulation on B16F10 cells

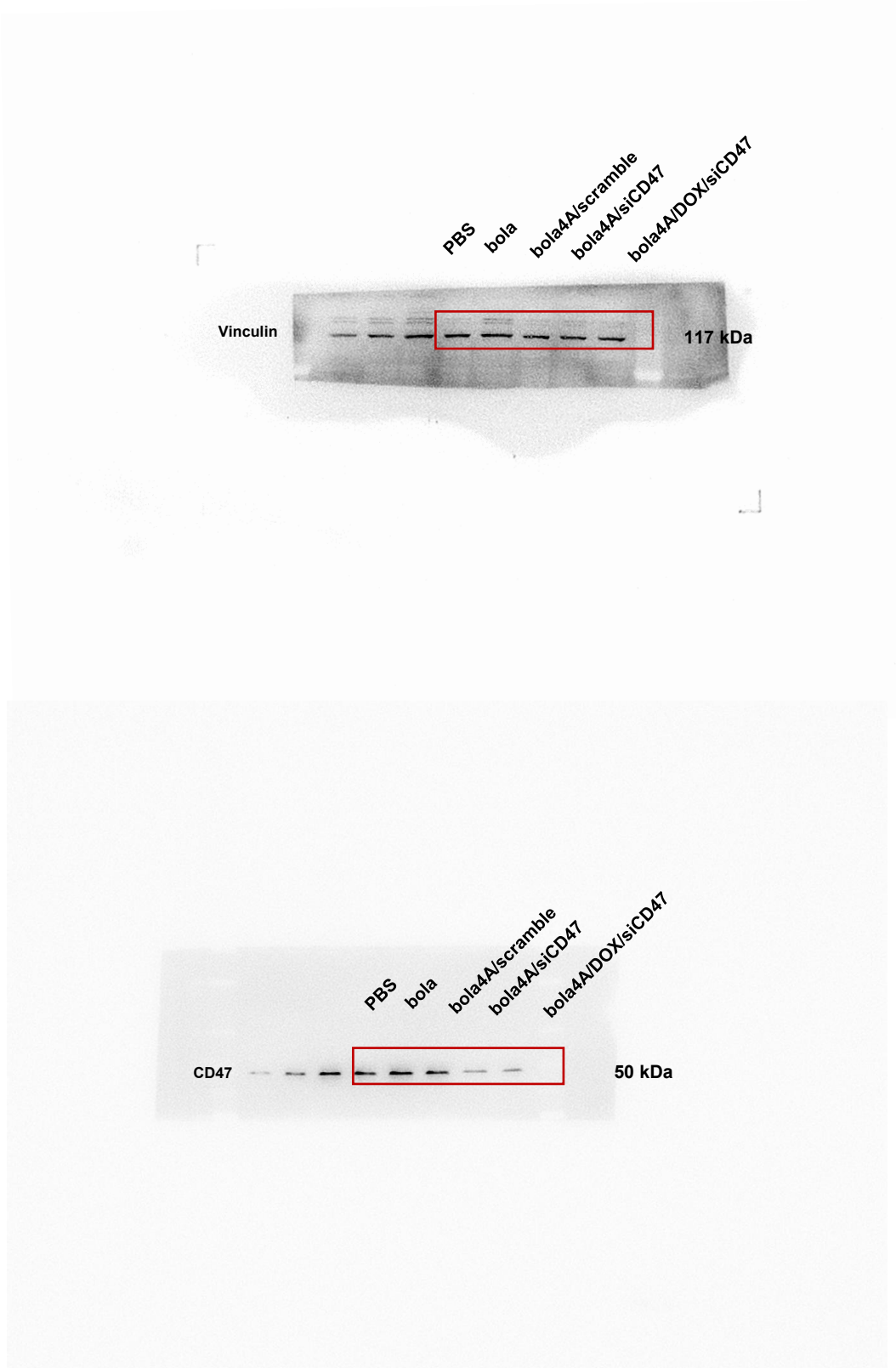


Figure 1G. To facilitate the incubation with the primary antibody, we cut the PVDF membrane into two parts, upper and lower, and incubated them separately with the respective antibodies

Figure 1H

CD47 protein downregulation on 4T1 cells

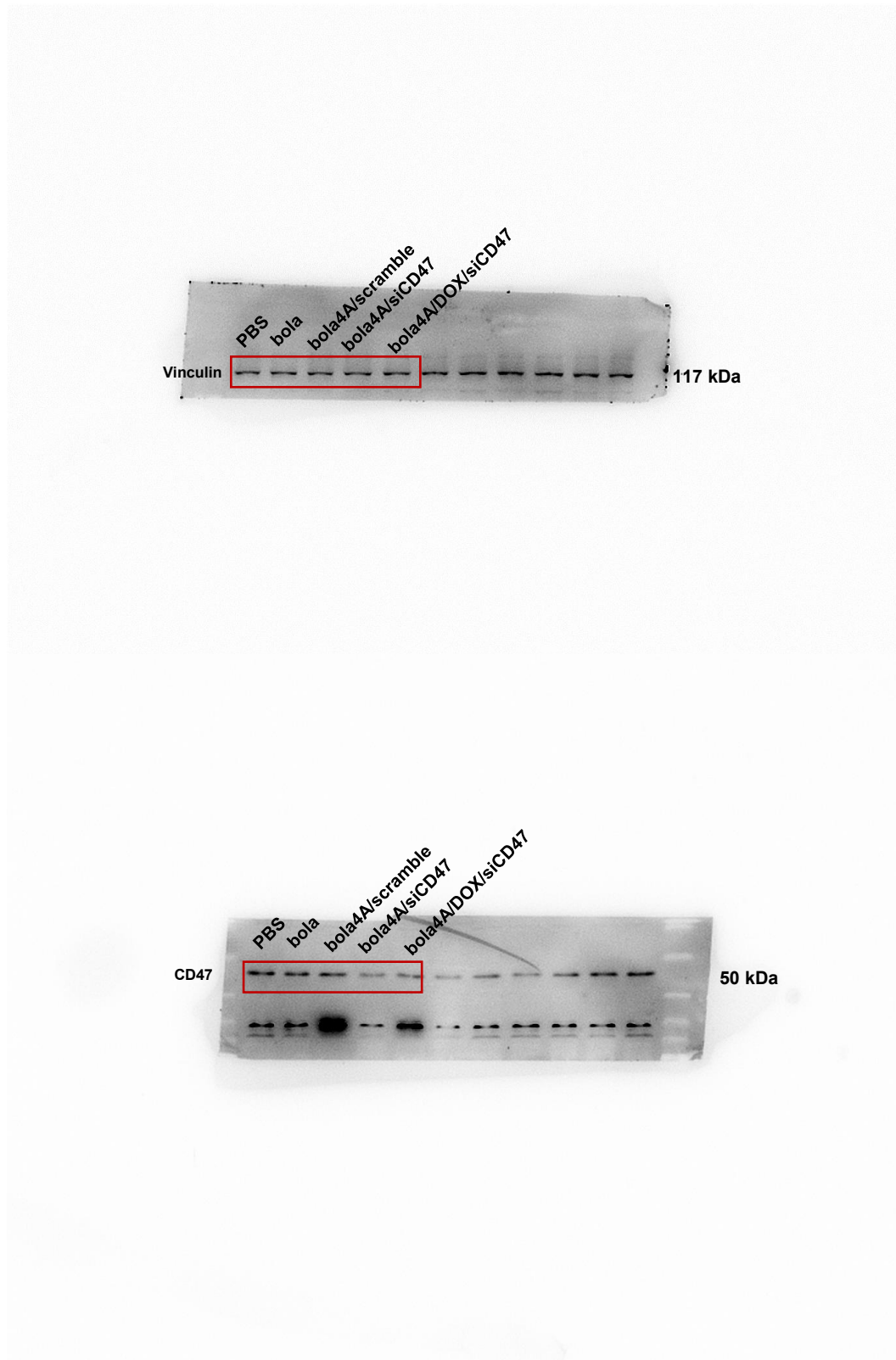


Figure 1H. To facilitate the incubation with the primary antibody, we cut the PVDF membrane into two parts, upper and lower, and incubated them separately with the respective antibodies

Figure 4B

CD47 protein downregulation on in the 4T1 orthotopic triple-negative breast cancer tumor mouse model

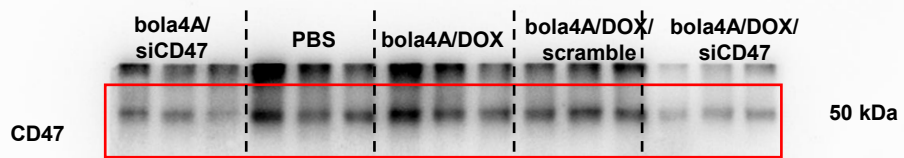
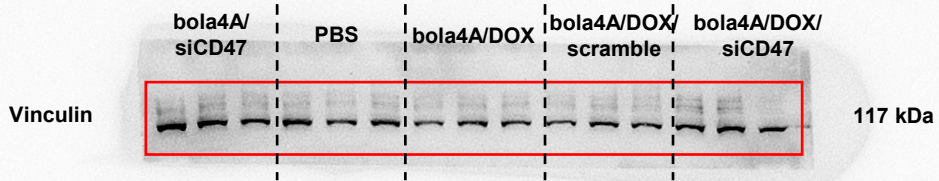


Figure 4B. To facilitate the incubation with the primary antibody, we cut the PVDF membrane into two parts, upper and lower, and incubated them separately with the respective antibodies

Figure 4B

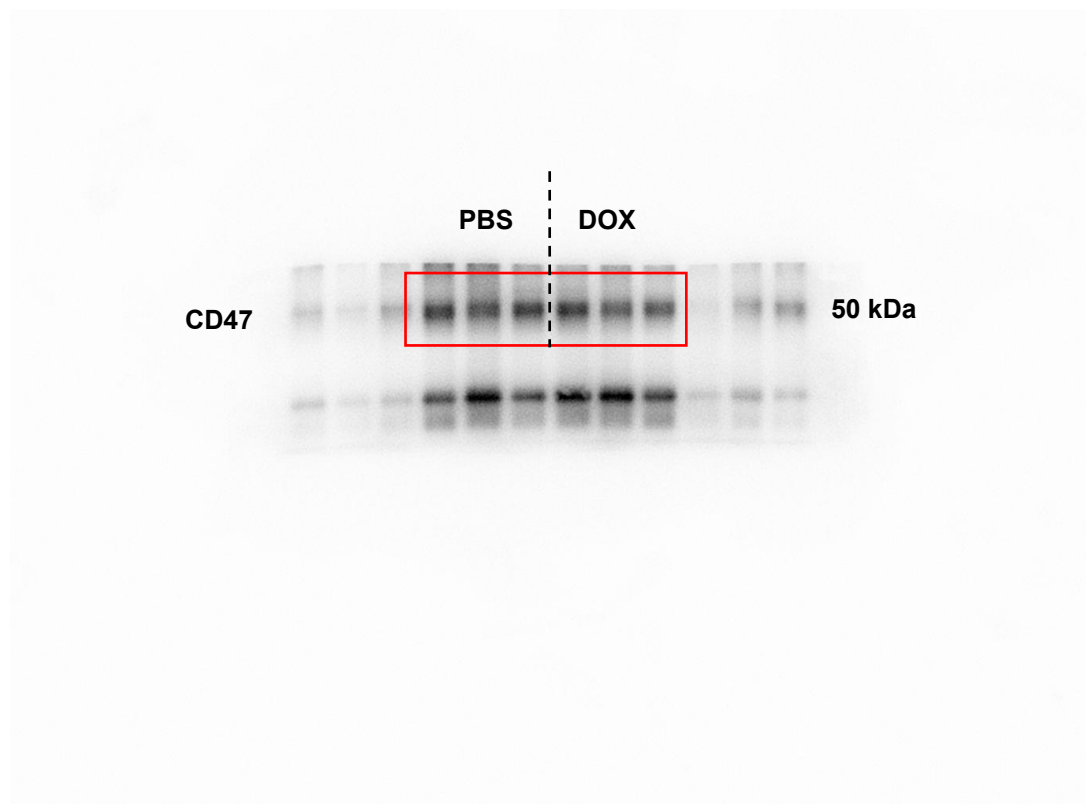
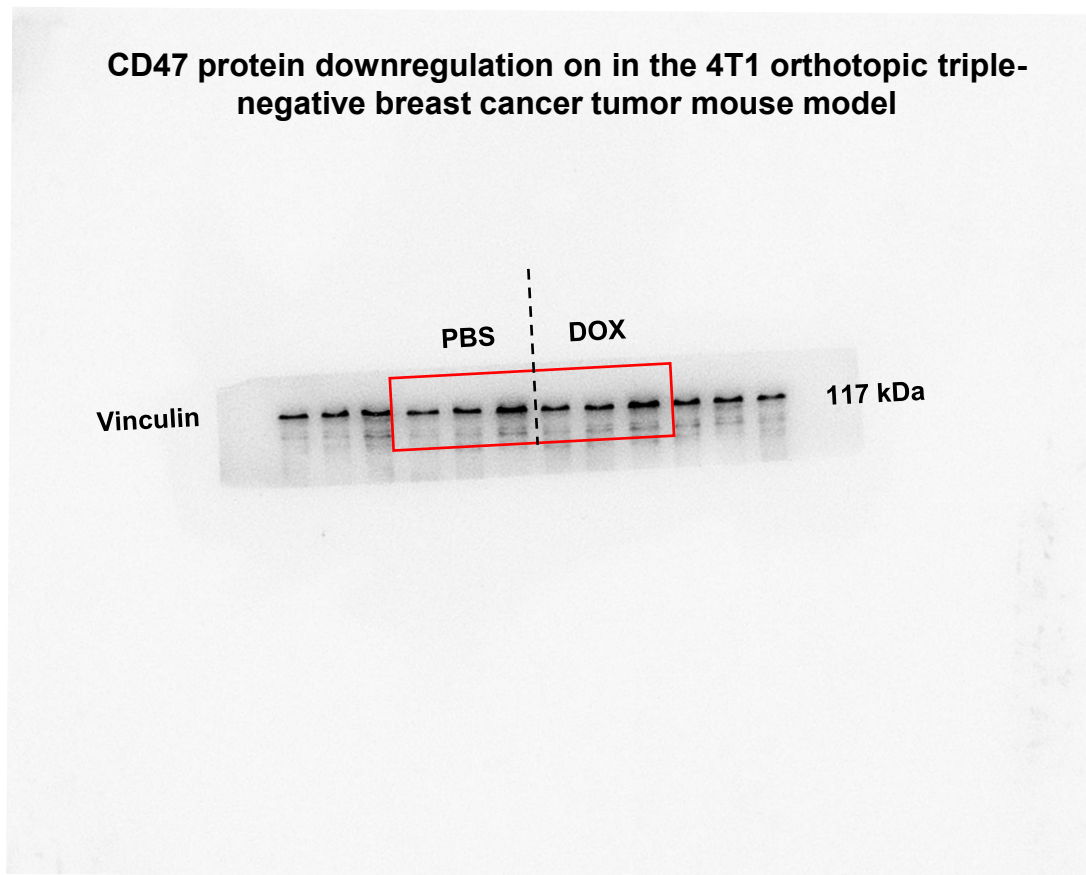


Figure 4B. To facilitate the incubation with the primary antibody, we cut the PVDF membrane into two parts, upper and lower, and incubated them separately with the respective antibodies

Figure 4B

CD47 protein downregulation on in the 4T1 orthotopic triple-negative breast cancer tumor mouse model

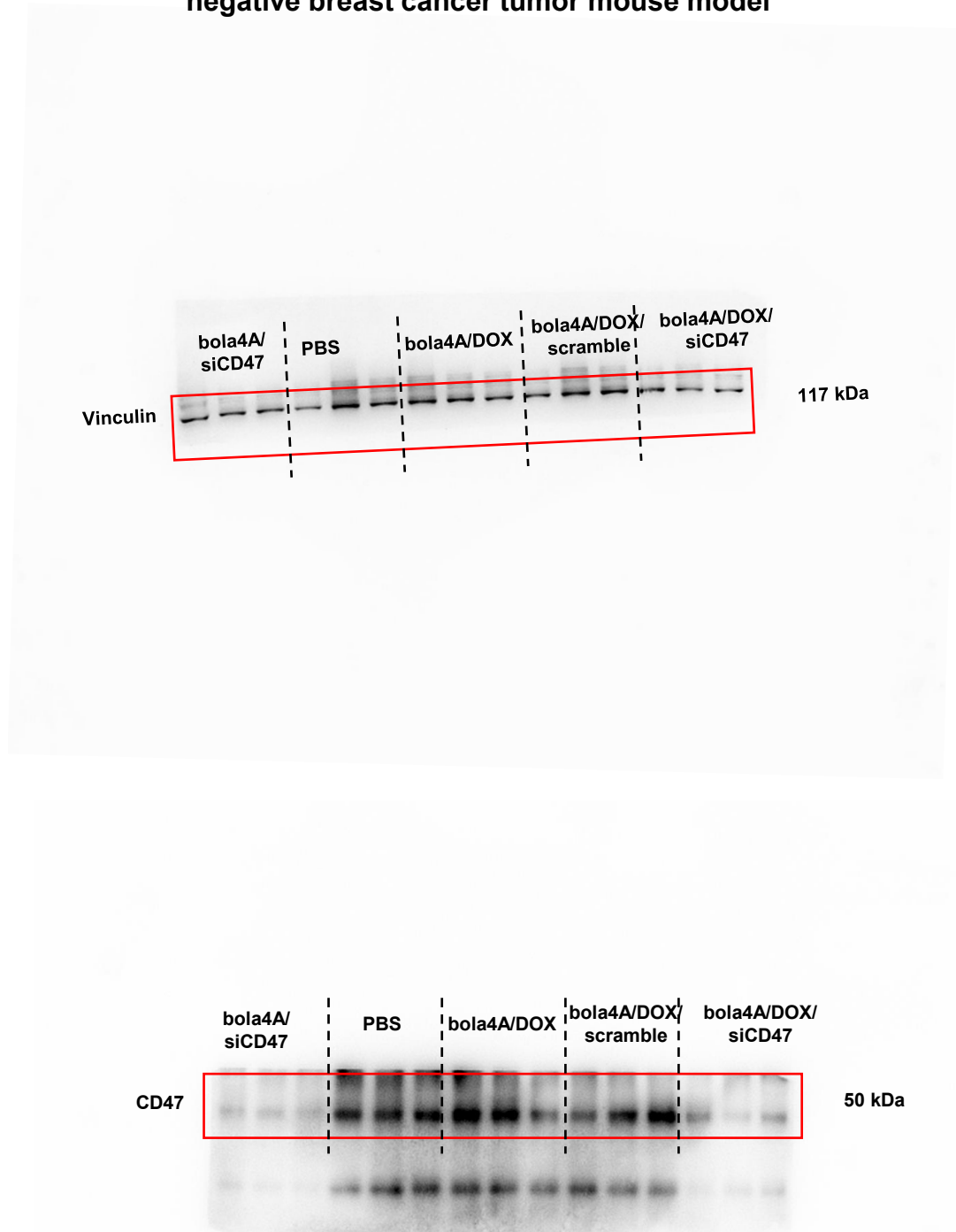


Figure 4B. To facilitate the incubation with the primary antibody, we cut the PVDF membrane into two parts, upper and lower, and incubated them separately with the respective antibodies

Figure 4B

CD47 protein downregulation on in the 4T1 orthotopic triple-negative breast cancer tumor mouse model

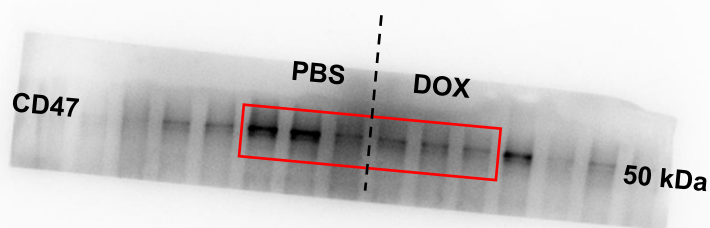
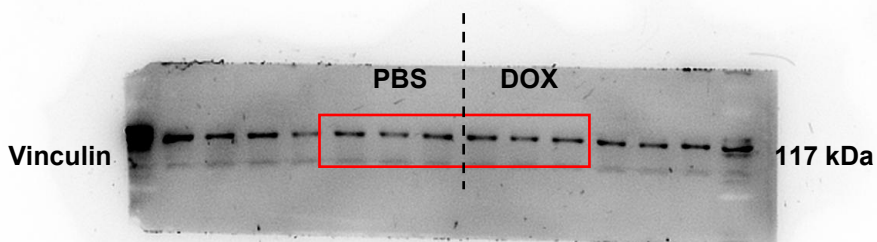


Figure 4B. To facilitate the incubation with the primary antibody, we cut the PVDF membrane into two parts, upper and lower, and incubated them separately with the respective antibodies

Figure S14A

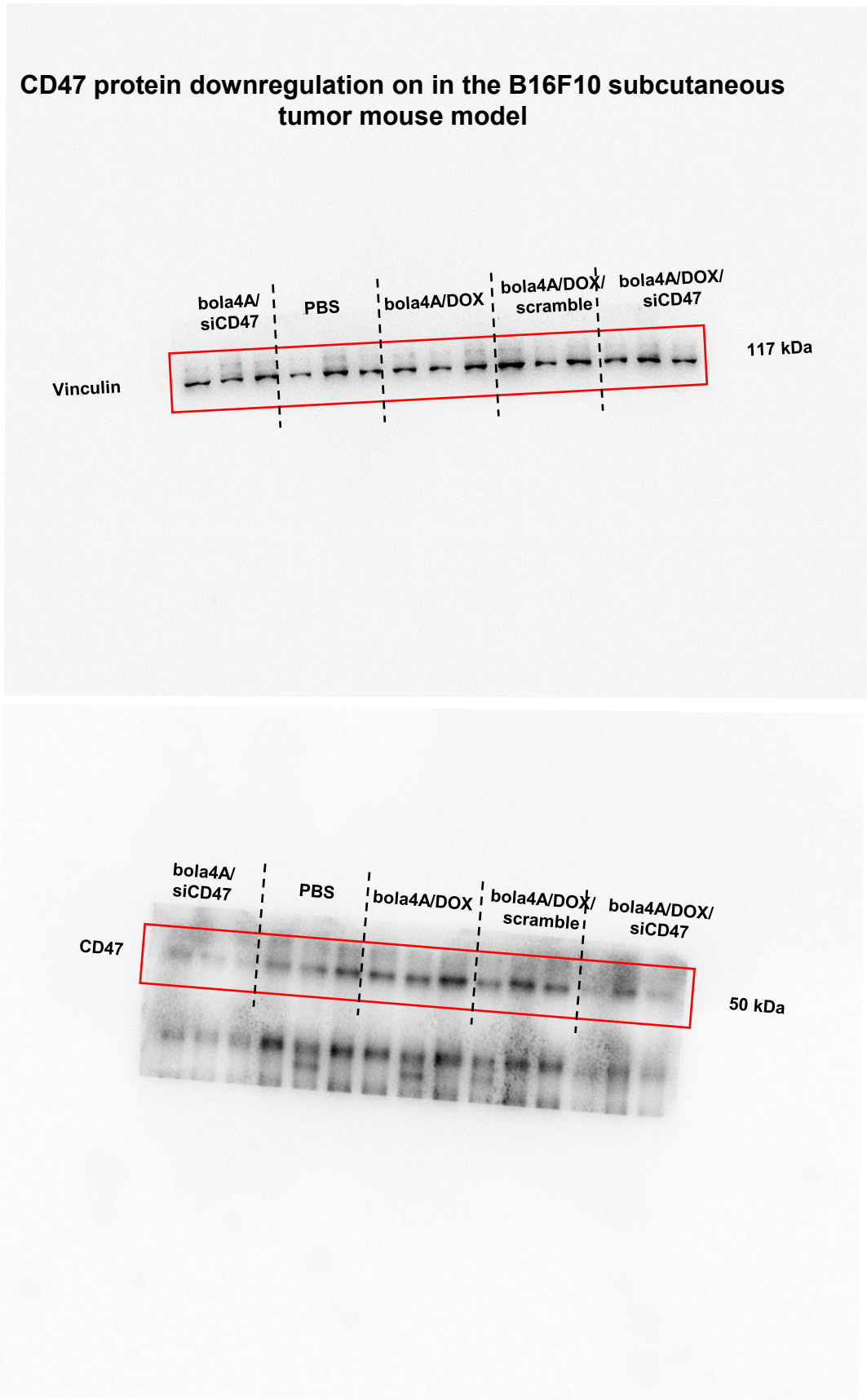


Figure S14A. To facilitate the incubation with the primary antibody, we cut the PVDF membrane into two parts, upper and lower, and incubated them separately with the respective antibodies

Figure S14A

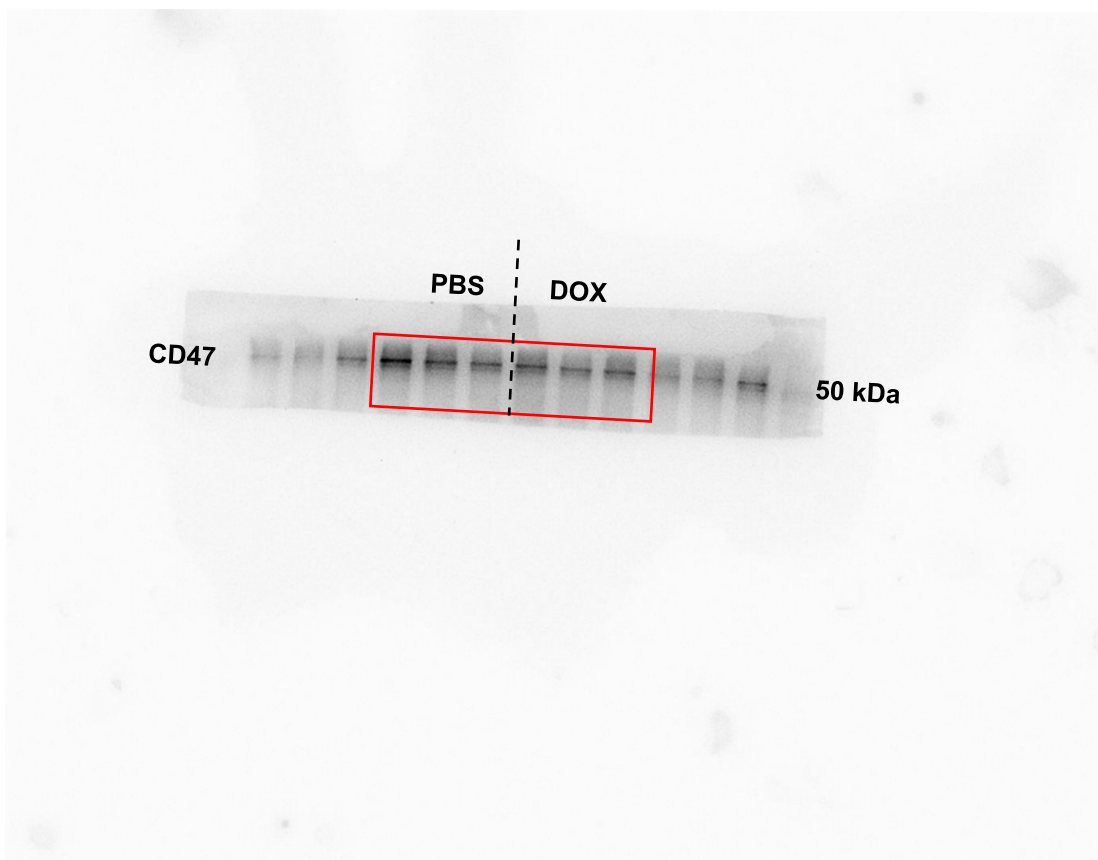
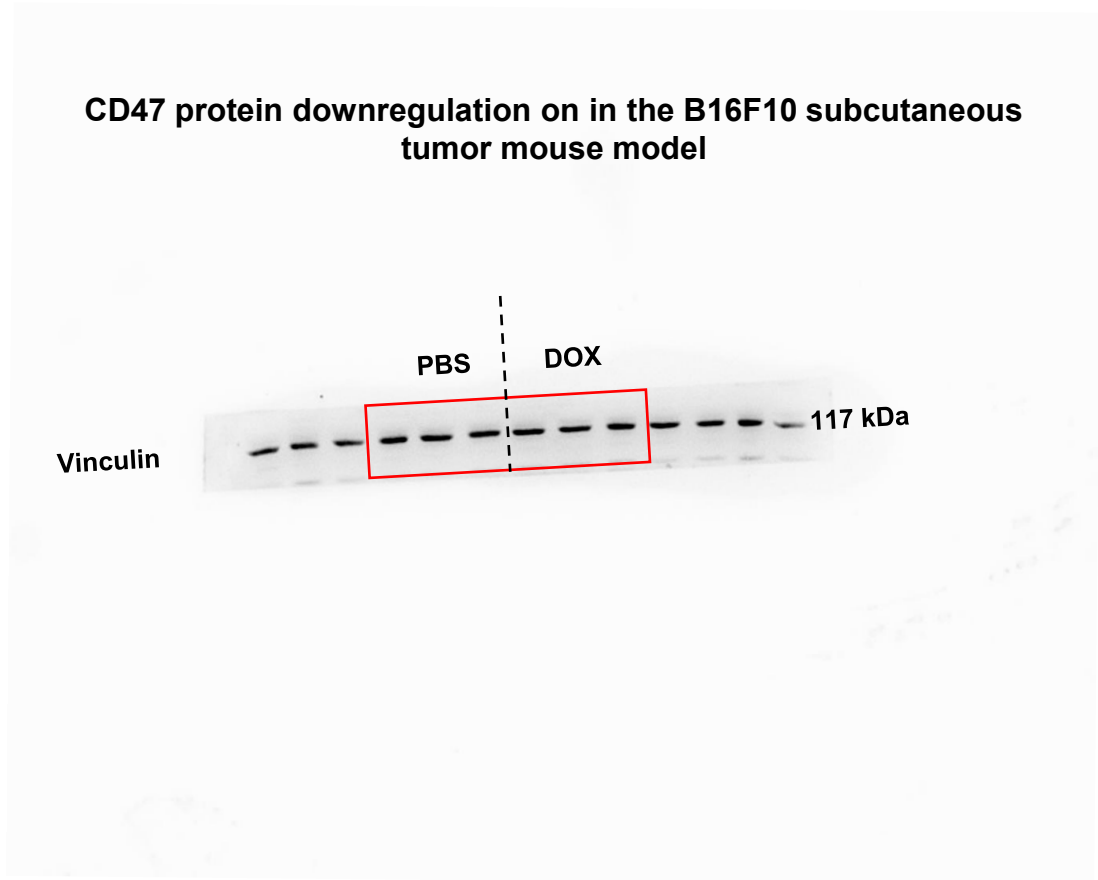


Figure S14A. To facilitate the incubation with the primary antibody, we cut the PVDF membrane into two parts, upper and lower, and incubated them separately with the respective antibodies

Figure S14A

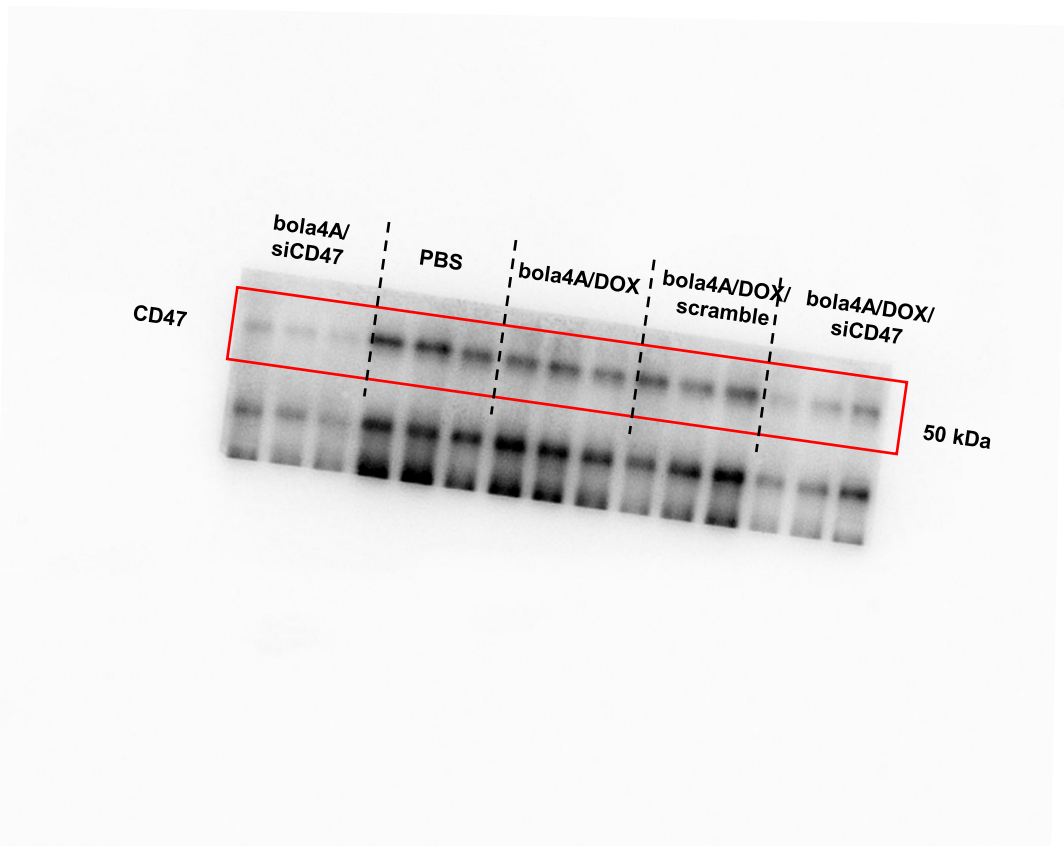
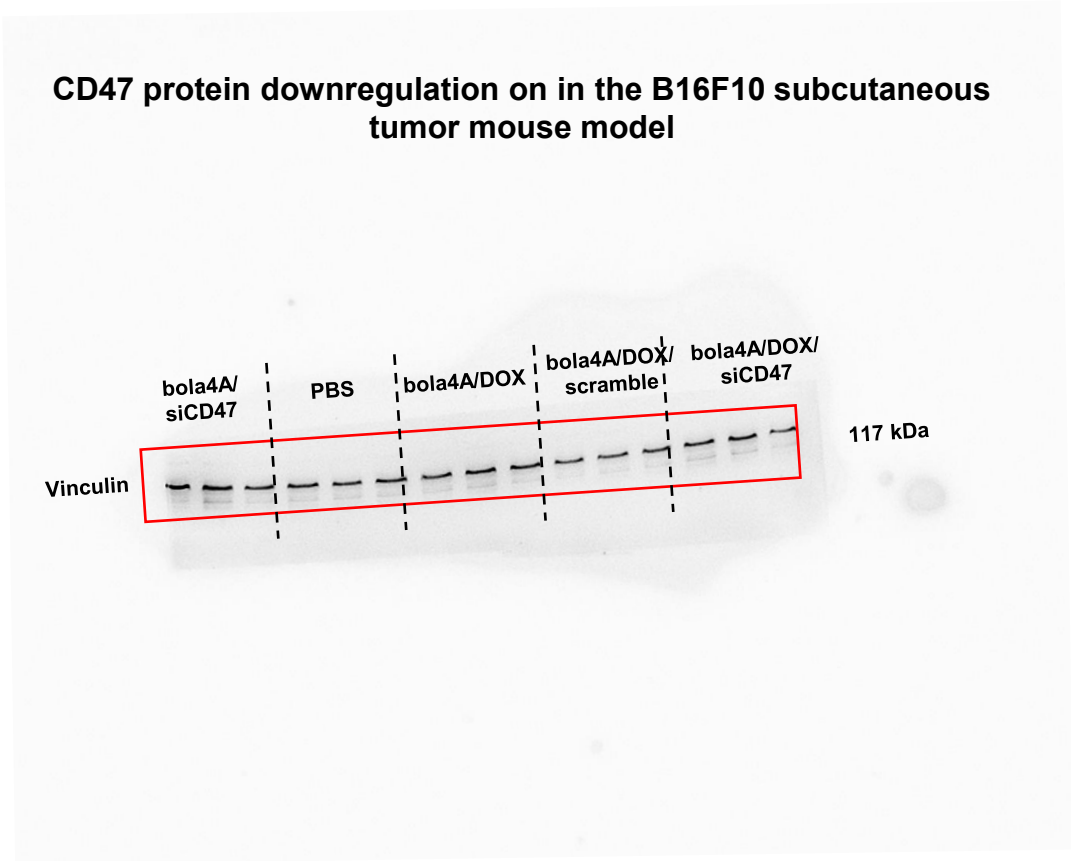


Figure S14A. To facilitate the incubation with the primary antibody, we cut the PVDF membrane into two parts, upper and lower, and incubated them separately with the respective antibodies

Figure S14A

CD47 protein downregulation on in the B16F10 subcutaneous tumor mouse model

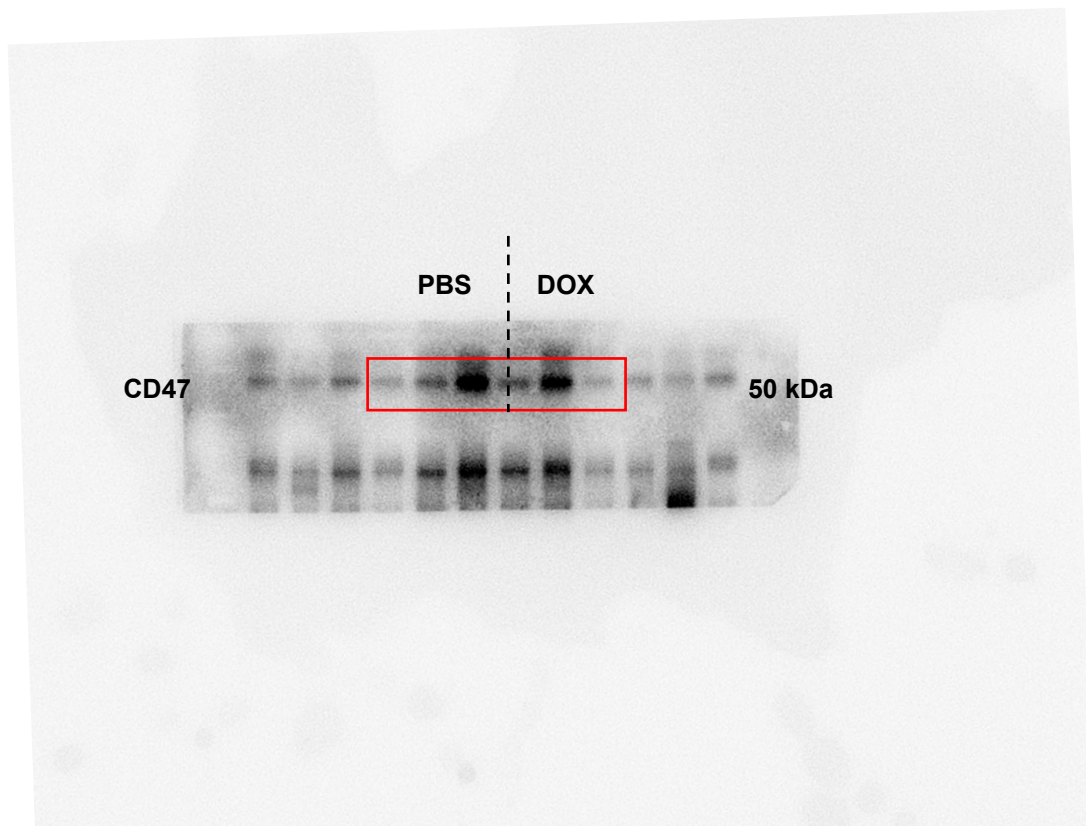
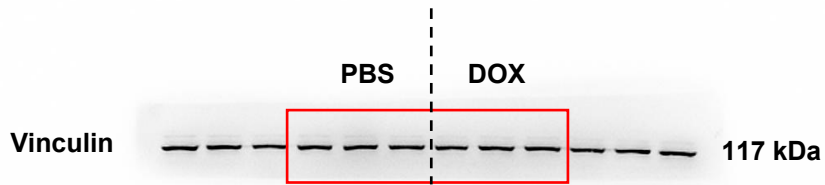


Figure S14A. To facilitate the incubation with the primary antibody, we cut the PVDF membrane into two parts, upper and lower, and incubated them separately with the respective antibodies