

Supporting Information

PINK1/Parkin-Dependent Mitophagy Regulates Macrophage Polarization and Osseointegration of Titanium Implant in Inflammatory Microenvironments

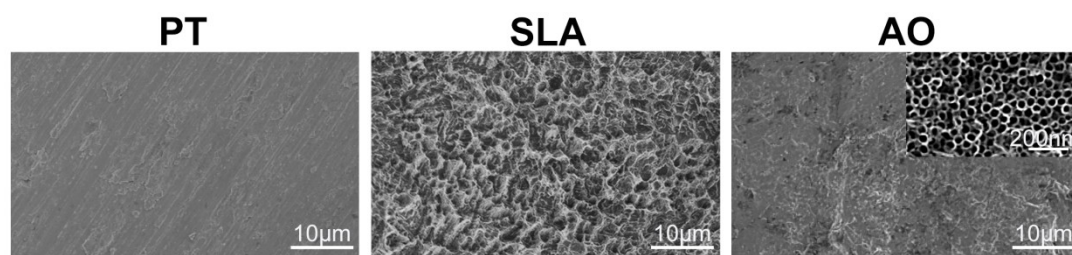


Fig. S1 SEM images of different titanium (Ti) surfaces. PT: polished Ti; SLA: sandblasted/acid-etched Ti; AO: anodized Ti. Scale bars: 10µm; 200nm (high-magnification insets).

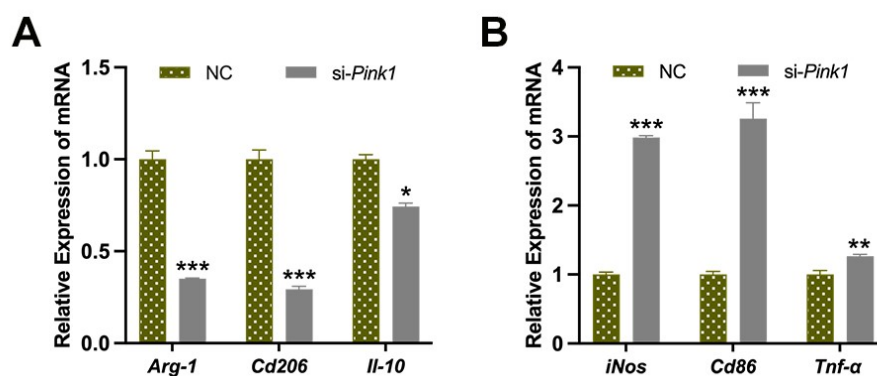


Fig. S2 qRT-PCR analysis of relative mRNA expression levels of M2 (A) and M1 (B) marker genes.

* $p < 0.05$, ** $p < 0.01$, *** $p < 0.001$.

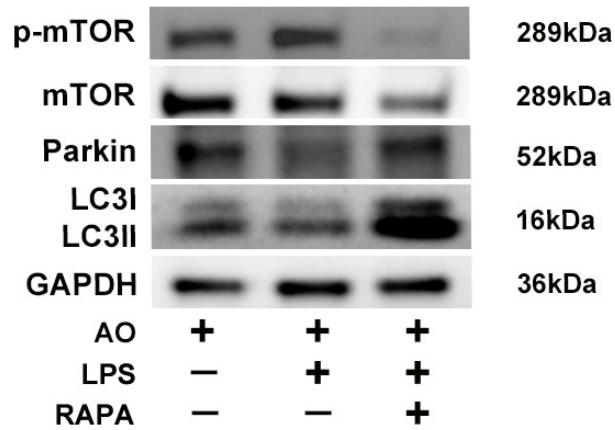


Fig. S3 The protein expressions of p-mTOR, mTOR, Parkin and LC3B in macrophages from AO, AO+LPS and AO+LPS+RAPA groups by Western blotting. GAPDH was utilized as an internal reference. LPS: lipopolysaccharide. RAPA: rapamycin.

Table S1. Primer sequences of related genes for qRT-PCR

Gene	Forward primer sequence (5'-3')	Reverse primer sequence (5'-3')
<i>Gapdh</i>	GTGAAGGTCGGTGTGAACGG	TCCTGGAAGATGGTGATGGG
<i>Arg-1</i>	CTCCAAGCCAAAGTCCTTAGAG	AGGAGCTGTCATTAGGGACATC
<i>Cd206</i>	CTCTGTTCAGCTATTGGACGC	CGGAATTTCTGGGATTCAGCTTC
<i>Il-10</i>	GCTCTTACTGACTGGCATGAG	CGCAGCTCTAGGAGCATGTG
<i>iNos</i>	GTTCTCAGCCCAACAATAACAAGA	GTGGACGGGTCGATGTCAC
<i>Cd86</i>	TGTTTCCGTGGAGACGCAAG	TTGAGCCTTTGTAAATGGGCA
<i>Tnf-α</i>	CCCTCACACTCAGATCATCTTCT	GCTACGACGTGGGCTACAG
<i>Pink1</i>	TTGCAATGCCGCTGTGTATG	TGGAGGAACCTGCCGAGATA
<i>Parkin</i>	ATCGGCAGTTTGTCCACGAT	GTGAGTCGCAATCCCCCTCA

Beclin-1 ATGGAGGGGTCTAAGGCGTC

TCCTCTCCTGAGTTAGCCTCT

Lamp1 TTCCAGTCTTGTGTTGGCGT

ATGCCAGTGTACAACCCAC

