

Supporting Information

NaCl-Assisted Growth of Ferroelectric SnSe Nanosheets with Spin Glass-like Behavior

Huiwen Xu, Hanxiang Wu, Chang Li, and Fei Pang*

School of Physics and Key Laboratory of Quantum State Construction and Manipulation (Ministry of Education), Renmin University of China, Beijing 100872, China

*Email: feipang@ruc.edu.cn

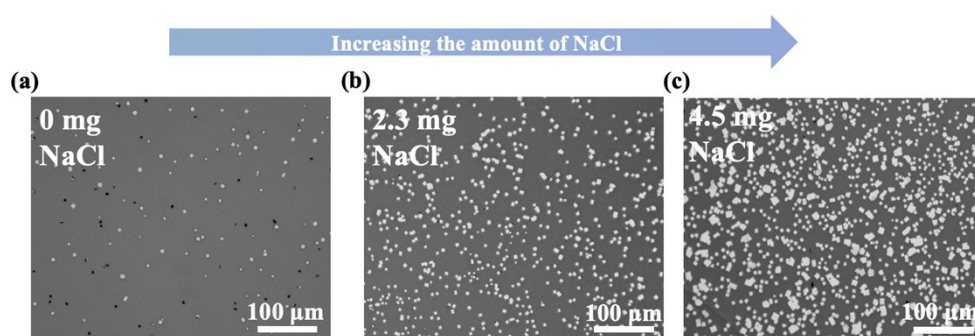


Figure S1 Low-magnification OM images of SnSe nanosheets grown on mica with different amounts of NaCl.

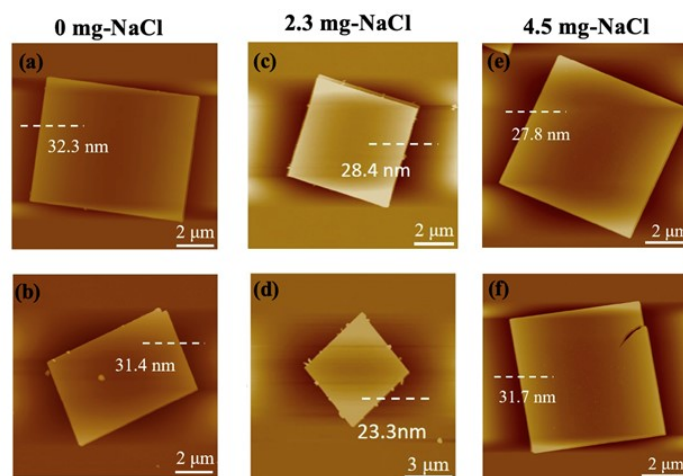


Figure S2 AFM images of SnSe nanosheets grown on mica with different amounts of NaCl.