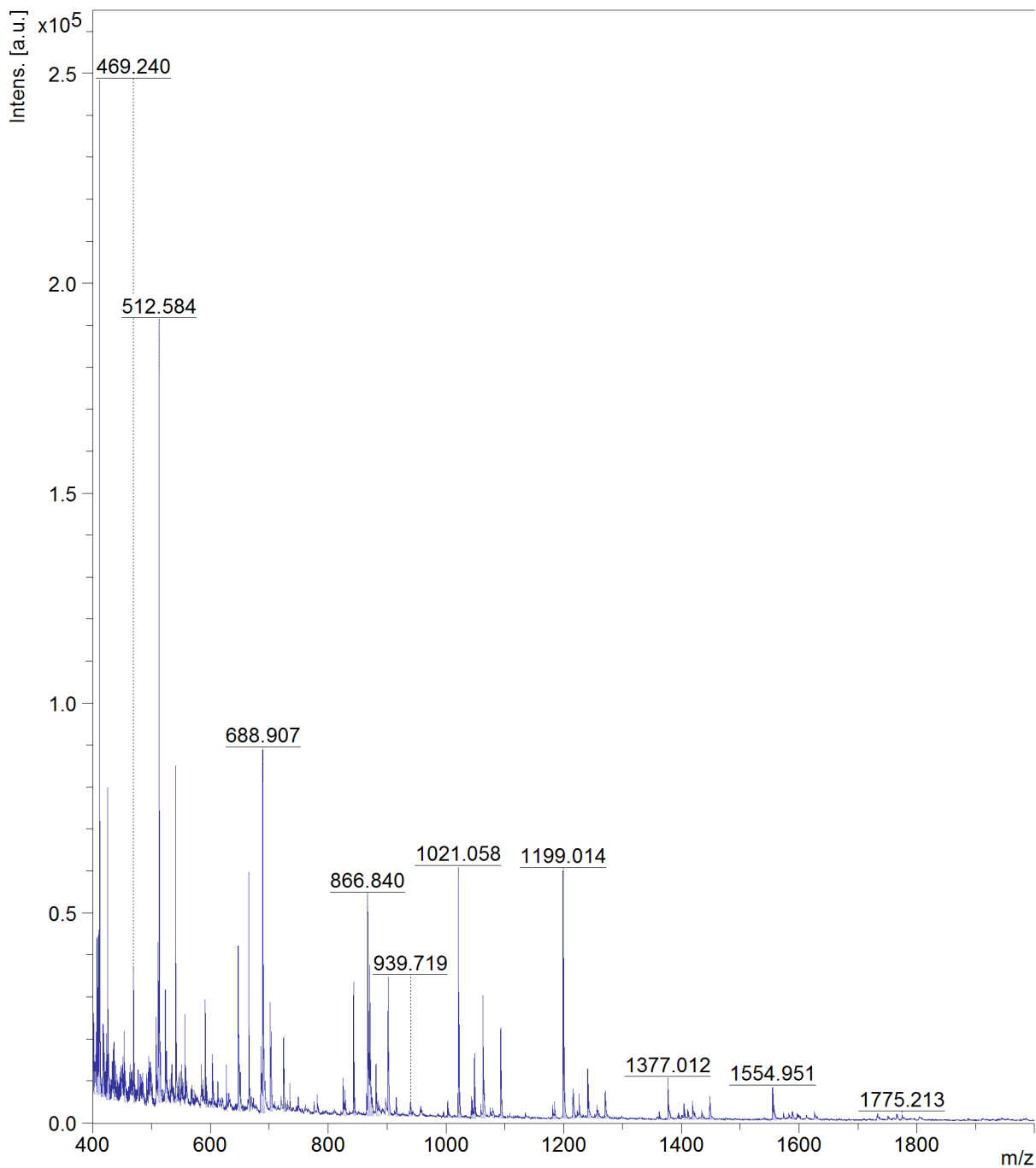




Instrument type autoflexTOF/TOF
Acquisition method D:\Methods\flexControlMethods\RP_100-1000_MW_Da.par
File Name D:\Data\Specs\Analizy_2025_IV_kw\JacewiczD\250909\K18_DHB\0_F15\1

Sample K18_DHB\0_F15\1
Comment 1
Comment 2





m/z	S/N	Quality	Fac.	Res.	Intens.	Area
401.380	7	695	656	24768	17160	
407.281	13	14547	1061	42728	21570	
408.383	6	555	1352	24365	7602	
409.322	12	4048	1015	39732	19458	
411.143	90	46161	1637	252080	91064	
417.228	6	432	435	21690	21594	
423.258	6	1019	1079	22341	9935	
425.281	28	33030	1197	80627	40042	
435.311	4	205	524	16227	13777	
453.342	4	300	571	15972	13506	
469.240	13	86151	1217	35896	18946	
511.106	17	3535	1109	43808	28692	
512.584	76	35185	1880	179245	76057	
523.414	10	6868	970	27795	21399	
540.597	35	27287	2104	81966	32286	
556.589	9	1412	2286	23553	7788	
591.114	12	6876	2223	27771	11043	
603.171	5	3219	887	14026	12604	
627.148	5	1003	1985	11362	4777	
647.044	22	1465	1117	38707	39957	
665.117	36	96114	2279	57825	28096	
685.617	7	311	654	13282	19934	
688.907	54	64525	1549	81362	66570	
701.674	14	1597	876	22180	28742	
703.127	9	2918	1673	15225	10336	
724.004	13	21971	1047	19880	21085	
734.523	5	3263	2144	8697	3995	
825.001	8	1703	1720	9496	7738	
828.684	5	2095	2044	6755	4016	
843.089	34	92294	2688	31836	18191	
865.061	6	171	2168	6784	4229	
866.840	57	26240	1859	49358	47092	
869.242	9	320	1170	9001	9550	
870.584	37	41266	1808	31954	29072	
874.465	4	1096	959	4935	5593	
881.044	13	6112	1667	12522	12096	
885.323	4	104	2491	4969	2597	
901.691	40	36212	1403	32758	37630	
915.478	5	5385	1402	5519	4613	
939.719	4	1397	1064	4370	4772	
1002.962	6	1251	2037	4589	3896	
1021.058	104	214357	2883	57917	41372	
1043.021	8	3471	2984	5562	3316	
1044.829	6	701	1720	4282	4414	
1048.460	26	35561	2773	14868	10904	
1059.082	4	469	1536	3465	3724	
1062.867	55	57008	2556	29107	25968	
1078.681	4	261	1723	3173	3156	
1093.099	39	33158	1887	20695	23519	
1180.921	7	1317	2112	3762	4108	
1184.514	6	1295	1854	3543	3604	
1199.014	140	397502	2893	59406	56892	
1216.023	17	32881	1808	7898	11675	
1226.437	11	2993	2362	5421	5177	
1240.850	27	19867	2556	11864	13453	
1256.708	4	491	597	2258	6318	
1270.771	15	5603	1892	6642	8929	
1377.012	25	50839	2814	9337	11521	
1404.382	8	1876	2269	3603	4466	
1410.743	5	1971	1508	2344	3817	
1418.828	10	1092	2022	3947	6415	
1434.395	4	806	908	1811	4469	



m/z	S/N	Quality Fac.	Res.	Intens.	Area
1448.462	14	5637	2117	5317	7939
1554.951	22	19647	2696	7064	11429
1558.504	4	1300	2312	1971	2610
1588.423	6	2467	1803	2248	3841
1626.167	5	422	1291	1656	3796
1775.213	4	147	3093	1454	1974