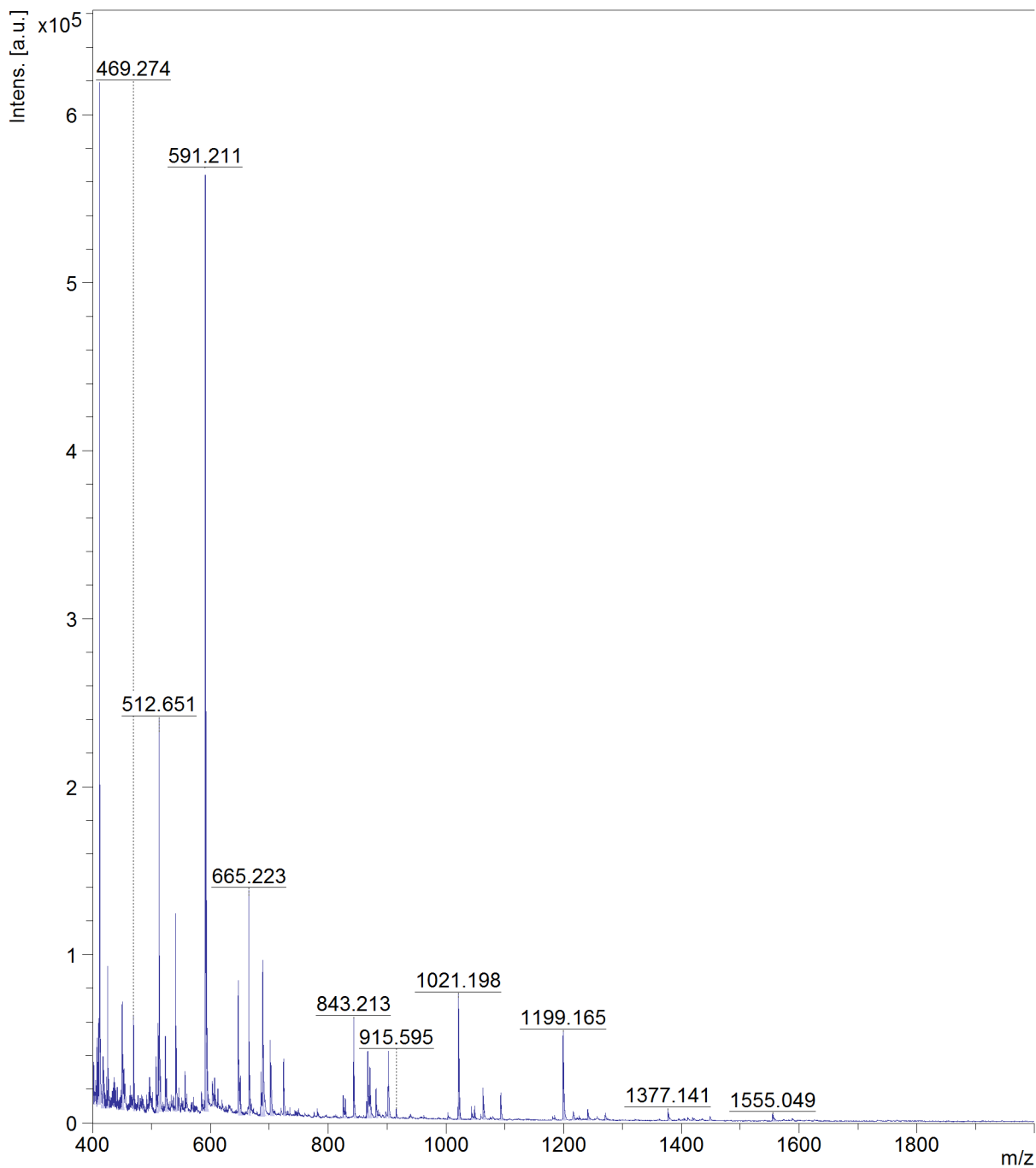




Instrument type autoflexTOF/TOF  
Acquisition method D:\Methods\flexControlMethods\RP\_100-1000\_MW\_Da.par  
File Name D:\Data\Specs\Analizy\_2025\_IV\_kw\JacewiczD\250909\K19\_DHB\0\_H15\1

Sample K19\_DHB\0\_H15\1  
Comment 1  
Comment 2





m/z	S/N	Quality	Fac.	Res.	Intens.	Area
401.427	6	2189	762	35601	19880	
407.333	9	12325	1209	50721	19793	
409.352	10	710	1088	54514	24217	
411.221	147	47956	1218	628996	310225	
417.248	6	733	370	34757	40534	
423.313	5	650	1151	27814	10390	
425.325	21	6477	1254	93636	42422	
450.157	13	1728	435	57969	79250	
469.274	14	47294	1293	60833	30194	
507.316	8	2373	857	36139	28634	
511.156	15	1952	1136	62384	38502	
512.651	61	18670	1449	232202	129859	
524.267	5	243	247	21699	50814	
540.670	31	22197	1557	116437	63934	
556.663	6	1390	1445	25910	12851	
591.211	184	55659	1486	567455	377585	
593.256	23	4226	1068	77739	69476	
647.159	27	2834	1010	73123	82509	
650.912	6	791	1069	19300	13235	
665.223	55	127124	1775	134558	83378	
685.707	8	335	617	21484	34203	
689.029	35	4631	1080	84440	97592	
701.807	13	1152	547	32415	69702	
724.135	14	7893	881	34524	41963	
825.126	9	1635	1472	14839	14105	
828.827	8	4281	1758	13100	9145	
843.213	46	254775	2080	61483	45207	
865.208	8	623	1836	12065	8502	
866.955	30	7313	1469	38267	44249	
870.709	22	21921	1534	28720	28836	
881.149	15	12858	1571	19206	18961	
897.093	4	235	1574	7062	5506	
901.817	36	43423	1298	41444	50192	
915.595	5	3832	1415	7678	6271	
1003.126	5	632	1612	5069	4581	
1019.136	5	47.7	1664	5200	4717	
1021.198	105	216237	2240	73803	66998	
1043.140	11	1149	1862	8937	9232	
1048.586	12	6442	2095	9393	7747	
1063.006	28	38063	1970	19618	21354	
1093.235	25	24208	1672	16746	20181	
1184.651	5	1576	1688	3654	3470	
1199.165	103	413381	2275	53577	64597	
1216.141	11	9436	1660	6565	9551	
1226.552	5	1083	1712	3641	3480	
1241.014	6	391	528	3591	12099	
1270.914	8	2498	1729	5221	6533	
1377.141	15	2696	2215	7124	10513	
1419.006	4	386	1182	2407	4451	
1448.588	7	4028	1989	3646	4887	
1555.049	12	1958	2372	4752	7849	