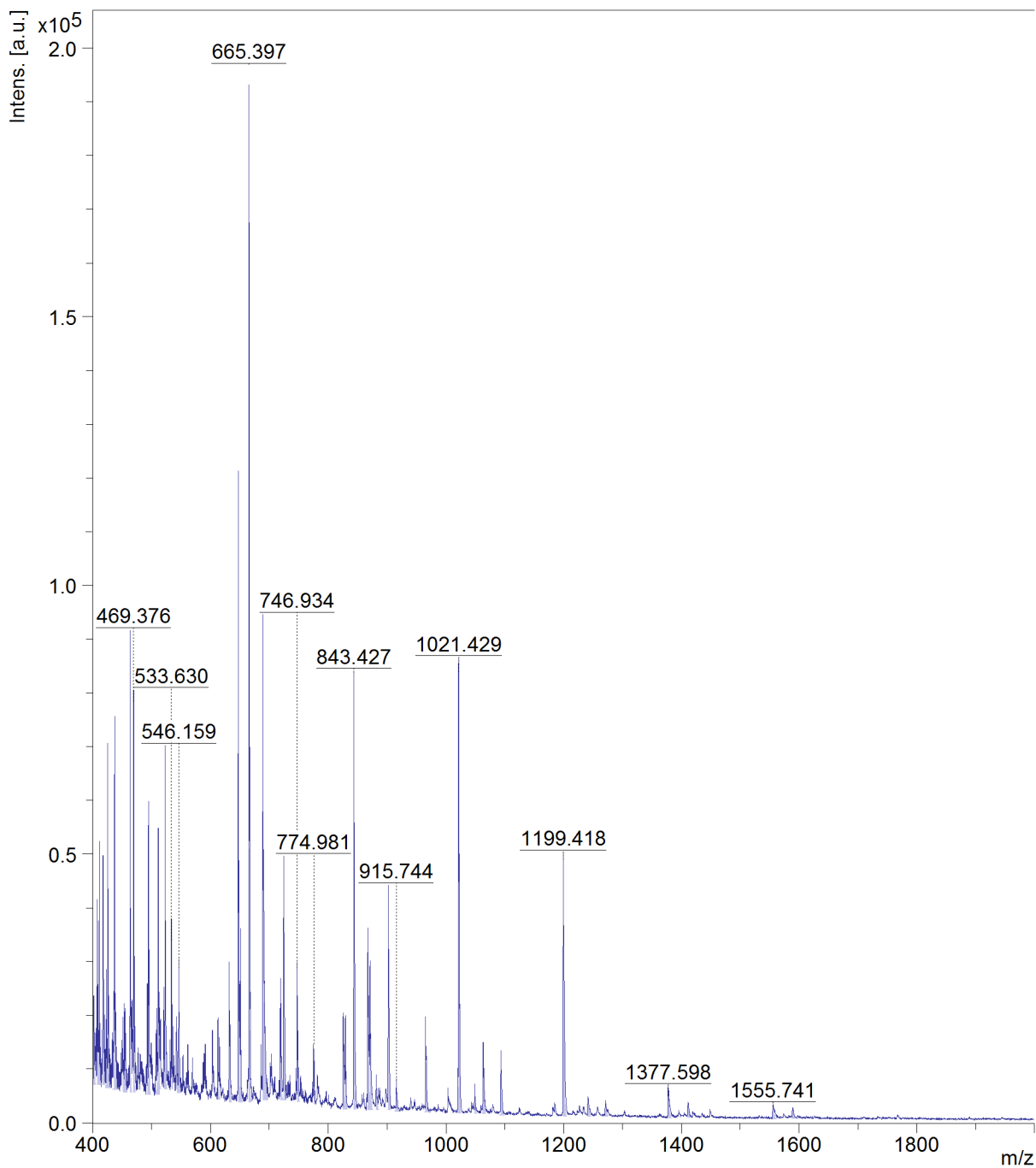




Instrument type autoflexTOF/TOF
Acquisition method D:\Methods\flexControlMethods\RP_100-1000_MW_Da.par
File Name D:\Data\Specs\Analizy_2025_IV_kw\JacewiczD\250909\K20_DHB\0_J15\1

Sample K20_DHB\0_J15\1
Comment 1
Comment 2





m/z	S/N	Quality	Fac.	Res.	Intens.	Area
401.641	4	385	384	21970	23250	
407.458	9	2200	670	39121	29965	
409.500	9	2081	1005	36211	15898	
411.223	12	2302	1091	47168	23440	
417.346	12	2380	373	45979	62416	
423.346	6	1823	749	28713	17254	
425.438	19	13121	880	71716	45302	
436.345	16	5298	768	58879	47029	
437.395	17	1059	1272	62848	28590	
451.416	4	683	815	18854	10800	
453.469	4	1102	575	18925	16224	
455.121	5	1594	892	19951	11994	
463.572	23	3103	1020	79160	51324	
469.376	23	13780	969	78194	54767	
492.674	6	1207	955	23357	15196	
494.748	18	4726	891	57930	49004	
508.706	4	681	836	18509	12483	
511.255	15	1964	794	51512	49293	
520.725	6	848	1068	24260	15031	
522.787	22	6952	954	68816	58142	
533.630	10	2524	1198	33712	20669	
542.255	4	5236	537	18620	19371	
546.159	8	7054	604	28652	29824	
612.818	4	234	619	14618	17507	
631.802	12	3986	932	29901	31934	
647.314	53	97185	1134	116792	112954	
651.057	13	4541	974	30446	27419	
665.397	97	230952	1196	196703	177759	
689.157	47	8815	967	93411	119527	
691.625	6	892	319	15098	43084	
718.853	15	1069	1445	30345	25654	
724.285	25	153537	791	48662	71030	
746.934	15	6980	1296	28650	28066	
774.981	7	6563	1358	14436	12222	
825.449	11	1740	660	16326	33345	
829.008	12	8369	1260	17195	17062	
843.427	68	286510	1305	83538	96897	
867.218	25	2376	879	29917	54035	
869.670	5	81.0	1835	8351	4920	
870.899	20	8639	1035	24336	36059	
881.369	5	354	942	7720	10099	
901.995	40	206001	1029	42580	65451	
915.744	5	5840	1086	7575	8042	
965.222	21	31743	1342	19447	26010	
1019.388	6	73.7	1163	5523	7561	
1021.429	123	305278	1434	83673	116290	
1048.807	8	3485	1419	6591	7339	
1063.324	13	794	628	8717	23672	
1093.429	19	63665	1282	13155	20248	
1199.418	99	290504	1512	48784	88157	
1241.364	7	1301	1043	4073	8222	
1271.093	5	582	926	3114	6720	
1377.598	14	1256	931	4843	14875	
1411.130	8	5083	1247	3334	7110	
1555.741	7	719	744	2173	8414	
1588.714	6	2990	1061	2006	5736	