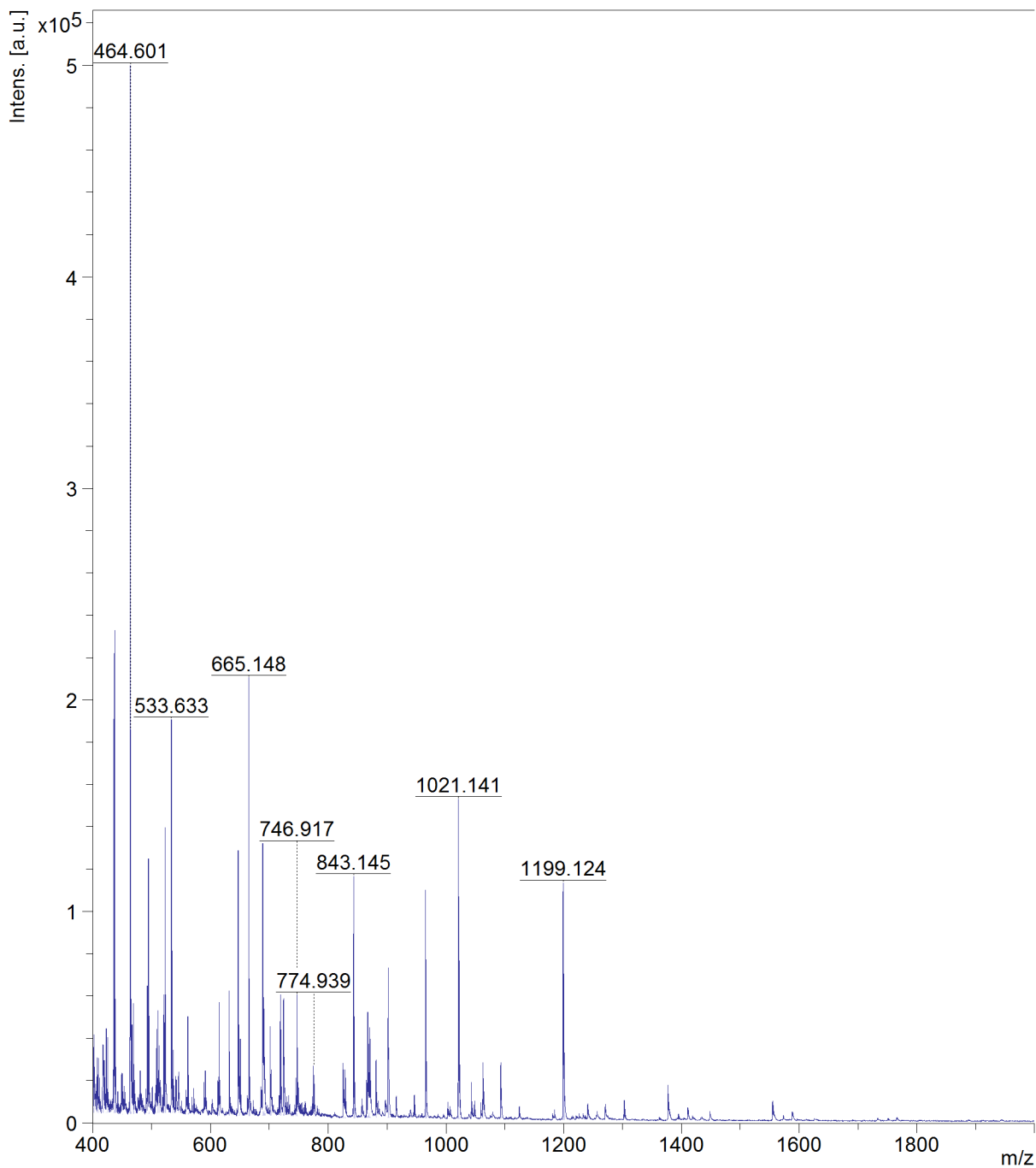




Instrument type autoflexTOF/TOF  
Acquisition method D:\Methods\flexControlMethods\RP\_100-1000\_MW\_Da.par  
File Name D:\Data\Specs\Analizy\_2025\_IV\_kw\JacewiczD\250909\K21\_DHB\0\_L15\1

Sample K21\_DHB\0\_L15\1  
Comment 1  
Comment 2





m/z	S/N	Quality Fac.	Res.	Intens.	Area
401.427	8		1483	35766	11281
401.956	10		1885	41642	11631
402.564	6		2284	26264	6657
407.203	5		2005	21801	4271
407.563	7		1880	30590	7659
409.226	7		1250	30492	10373
417.334	9		722	37001	24718
418.223	7		1630	30238	11543
419.205	7		1833	29657	9305
422.983	11		1456	44605	13882
425.213	10		1564	40317	13043
435.185	6		1712	25170	6782
436.170	61		1866	221980	63448
437.195	64		1849	232924	66410
438.202	15		1988	58402	15211
439.213	6		2020	26261	6700
449.160	5		2292	23338	5343
450.165	5		2102	23142	6265
463.157	11		2347	40717	8703
463.589	143		1864	500179	157867
464.601	52		1773	186090	64969
465.602	12		1844	45580	14444
466.666	12		1990	46509	13888
469.194	15		1872	56617	16519
470.218	5		1198	22702	8454
480.663	6		2093	24544	6116
492.670	18		2007	64878	19520
493.673	7		2045	27566	7897
494.684	36		1958	124887	38087
495.687	14		1880	50408	16954
508.681	12		2017	44318	13090
511.055	15		1855	53287	20002
512.644	10		2252	36402	10751
520.688	17		1969	60641	17260
521.696	7		2144	28437	7990
522.700	42		1995	139602	43190
523.706	17		1884	60635	25071
533.633	58		1961	190698	61096
534.641	24		1934	81251	27564
536.694	9		2048	34368	9595
540.653	6		2403	22002	4970
545.847	6		1887	23914	6344
545.972	6		2220	23339	6790
561.652	15		2076	50338	15438
562.657	6		2212	22532	6445
591.212	8		2291	24718	7165
614.031	7		2651	21758	6423
615.063	21		2313	57103	19495
631.710	24		2429	62284	19233
632.723	12		2497	33427	10356
647.096	54		2285	128872	46368
648.094	18		2405	46315	18000
649.137	8		2390	21812	8644
650.808	16		2370	39738	13084
665.148	91		2412	210458	67465
666.159	29		2454	68142	24126
667.149	8		3104	21742	5780
688.972	57		2143	132305	57438
689.966	26		2357	59216	29523
690.876	23		2099	53608	27519
691.840	13		2385	30954	16393
692.756	8		2140	20675	8757



m/z	S/N	Quality Fac.	Res.	Intens.	Area
701.578	19		2319	45576	16997
702.578	9		3038	22956	6657
703.081	10		2794	24926	8390
718.886	28		2328	60629	21870
719.883	20		2184	43939	17894
723.993	28		1314	58766	39316
724.945	14		1627	30764	18758
744.901	10		2542	21111	6358
746.917	31		2331	60570	22299
747.917	17		2352	35449	13027
774.939	15		2492	26883	8680
825.078	18		2652	28212	10675
828.740	16		2455	25058	10269
843.145	79		2684	116639	43932
844.151	33		2819	50271	20191
845.167	12		2988	19188	6778
865.085	13		2919	20102	6296
866.950	37		2300	52482	25313
867.924	26		2436	37201	18709
868.946	16		2490	23869	12063
870.642	32		2479	45007	21722
871.632	15		2630	22432	12088
881.056	21		2650	29895	11795
901.714	60		1676	73307	51185
902.694	28		1624	35520	24919
965.040	107		2828	110116	44893
966.044	74		2903	77238	32631
967.047	27		3014	29112	12283
1020.102	21		2917	18817	7507
1021.141	184		2787	153062	67379
1022.149	94		2883	78926	36004
1023.164	37		2945	31798	14831
1043.085	22		2946	19203	7263
1063.008	34		2595	28485	14299
1093.130	35		2287	28613	16151
1199.124	183		3090	113643	54598
1200.126	113		3132	70503	37107
1201.120	52		3063	33256	18951