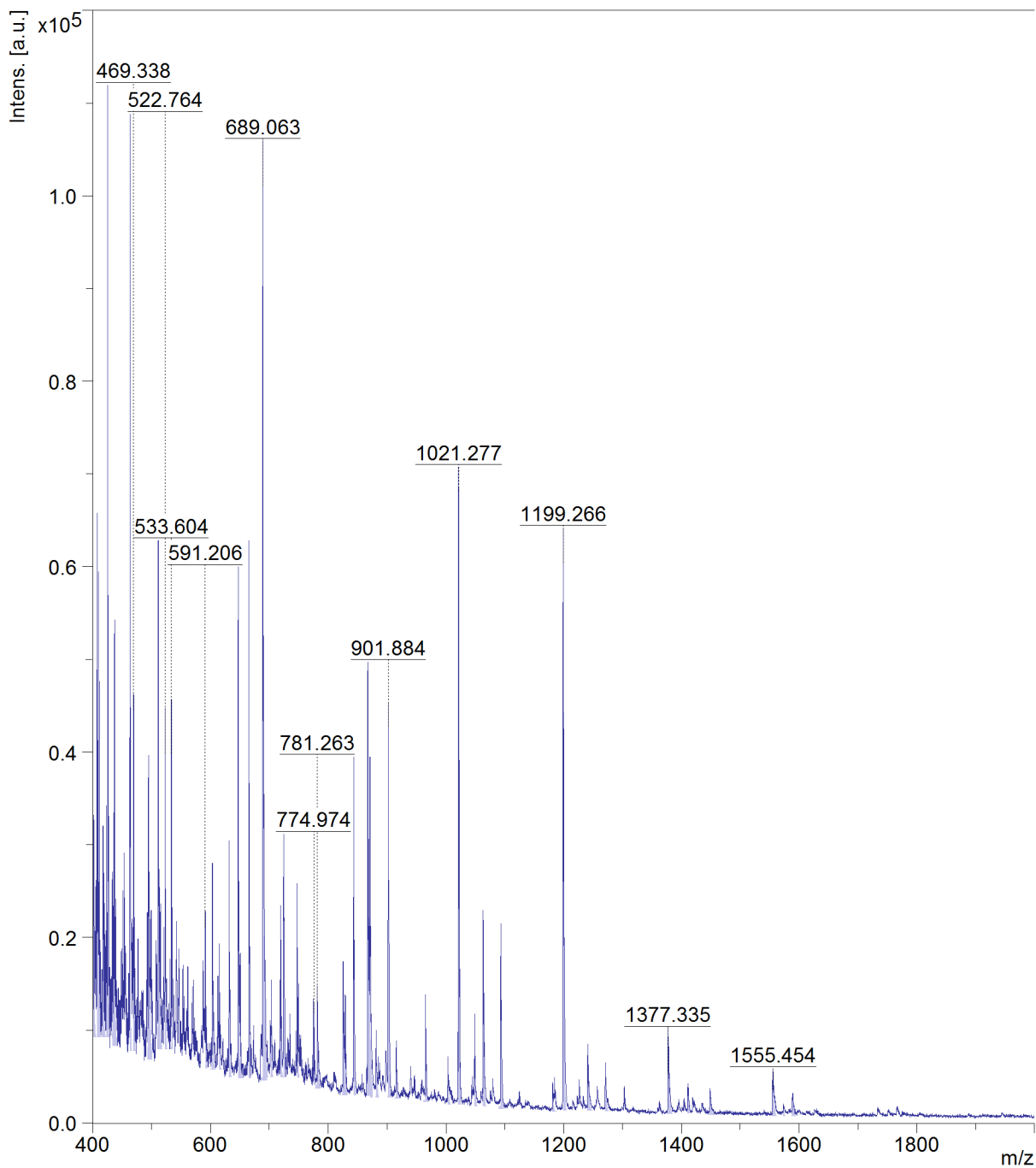




Instrument type autoflexTOF/TOF
Acquisition method D:\Methods\flexControlMethods\RP_100-1000_MW_Da.par
File Name D:\Data\Specs\Analizy_2025_IV_kw\JacewiczD\250909\K22_DHB\0_N15\1

Sample K22_DHB\0_N15\1
Comment 1
Comment 2





m/z	S/N	Quality	Fac.	Res.	Intens.	Area
401.455	6	567	457	31312	29448	
407.416	14	4482	648	62595	51533	
409.363	12	5678	841	54481	35337	
411.216	9	3262	976	44100	22459	
417.411	5	258	300	27499	37409	
423.350	7	1811	728	33971	21328	
425.402	28	35756	922	113375	70844	
433.350	5	1989	731	27242	15317	
435.418	5	286	897	27364	11940	
436.279	9	6078	801	43734	29482	
437.290	10	3279	1431	45584	16749	
463.559	22	576	813	85516	61025	
469.338	10	13077	851	44392	31783	
495.112	5	179	184	21111	60165	
511.457	8	276	239	31518	78875	
522.764	10	4354	901	39755	31487	
533.604	10	2435	1269	39748	21009	
591.206	5	2410	1437	20932	10672	
603.309	8	7933	925	26785	24015	
615.151	4	1379	1275	17475	9787	
631.749	9	3586	1038	26804	23839	
647.182	22	16619	1241	57792	50074	
650.915	4	1324	829	14954	12141	
665.270	25	75832	1418	62867	46193	
689.063	43	32342	1097	101010	114633	
692.081	4	354	264	12996	35092	
703.339	4	951	779	13853	12833	
718.949	8	1473	1271	22665	18603	
724.195	12	85799	804	30314	40917	
746.937	10	10418	1528	24082	18404	
774.974	4	2604	1410	11712	8274	
781.263	5	1825	902	12964	14368	
825.559	5	792	308	8923	31470	
828.838	5	795	2704	10267	4203	
843.274	27	73046	1555	38895	36486	
867.625	16	297	249	19129	110137	
871.689	9	95.7	1224	14180	14258	
881.308	4	297	748	7642	11541	
901.884	35	74835	1089	42654	61270	
915.591	4	5363	1125	7635	7597	
965.104	11	26269	1736	12922	12528	
1003.219	4	470	963	5489	7935	
1021.277	84	147067	1759	68000	77486	
1048.660	11	9067	1577	9648	10769	
1063.118	27	27432	1591	20642	27747	
1093.317	27	52987	1481	20133	27317	
1181.196	4	768	1333	3396	4218	
1199.266	115	267370	1908	60299	86680	
1241.275	8	734	632	4160	13296	
1271.012	8	1465	1268	4919	8857	
1377.335	15	1093	741	5134	20476	
1411.085	7	4747	1259	3250	6236	
1448.572	5	1172	957	2286	5730	
1555.454	12	879	1002	3488	12154	
1573.061	5	82.3	3778	2130	1597	
1588.645	7	4195	1149	2257	6187	