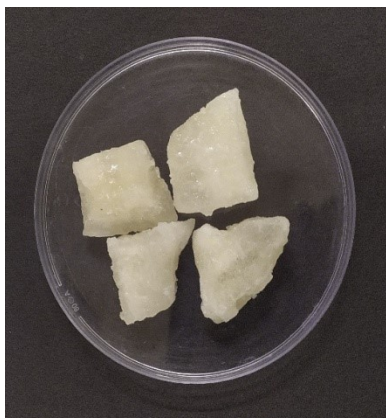
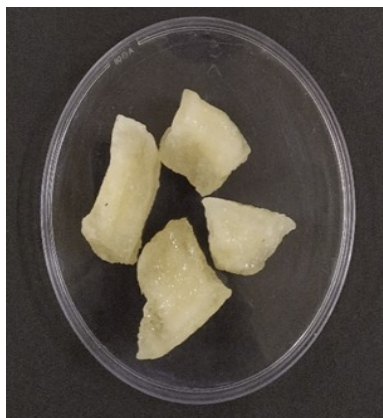


**Fig. S1: Ash gourd candies supplemented with rosehip powder (RP) blanched for (a) 0 (b) 2.5 and (c) 5 min**



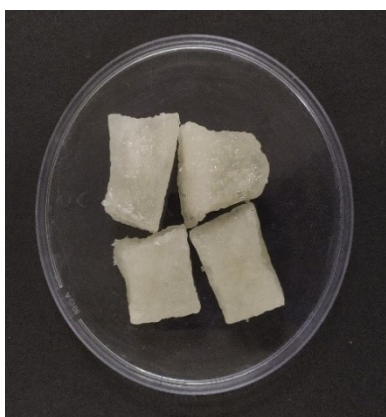
**a1 (Control)**



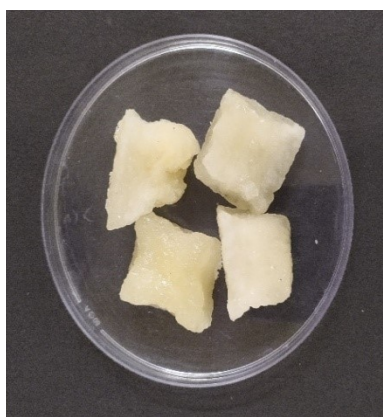
**a2 (RE: 5 %)**



**a3 (RE: 10 %)**



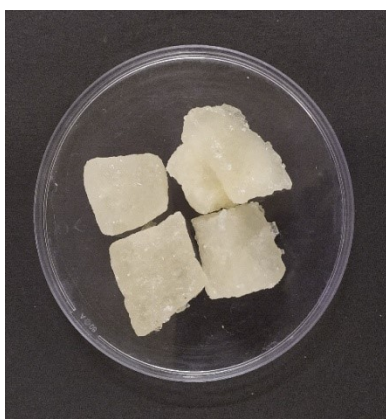
**b1 (Control)**



**b2 (RE: 5 %)**



**b3 (RE: 10 %)**



**c1 (Control)**



**c2 (RE: 5 %)**



**c3 (RE: 10 %)**

**Fig. S2: Ash gourd candies supplemented with rosehip extract (RE) blanched for (a) 0 (b) 2.5 and (c) 5 min**

**Table S1a: Eigen value for biplot for RP treatments**

	<b>Eigen value</b>	<b>Variance (%)</b>	<b>Cumulative variance</b>
PC1	5.56	50.58	50.58
PC2	3.41	30.98	81.56
PC3	1.06	9.64	91.19
PC4	0.46	4.19	95.38
PC5	0.29	2.66	98.04
PC6	0.15	1.40	99.44
PC7	0.04	0.35	99.79
PC8	0.02	0.21	100.00
PC9	0.00	0.00	100.00

**Table S1b: Eigen value for biplot for RE treatments**

	<b>Eigen value</b>	<b>Variance (%)</b>	<b>Cumulative variance</b>
PC1	6.97	63.36	63.36
PC2	2.55	23.18	86.54
PC3	0.71	6.45	92.99
PC4	0.53	4.81	97.80
PC5	0.16	1.43	99.22
PC6	0.05	0.44	99.66
PC7	0.03	0.31	99.97
PC8	0.00	0.03	100.00
PC9	0.00	0.00	100.00

**Table S2a: Loading values for biplot for RP treatments**

	<b>PC1</b>	<b>PC2</b>	<b>PC3</b>	<b>PC4</b>	<b>PC5</b>	<b>PC6</b>	<b>PC7</b>	<b>PC8</b>	<b>PC9</b>
TPC	0.41	0.08	0.08	-0.17	-0.04	0.07	0.45	0.22	-0.40
TFC	0.39	0.07	0.22	-0.06	-0.52	-0.13	-0.45	0.25	0.40
DPPH	0.34	0.01	-0.09	0.82	0.04	0.36	0.14	-0.04	0.21
FRAP	0.4	0.1	-0.02	-0.10	-0.28	-0.29	0.28	-0.70	-0.03
MCA	0.38	0	-0.13	-0.12	0.70	-0.05	-0.41	-0.21	0.03
Antidiabeti									
Activity	0.41	0.04	0.05	-0.14	0.27	-0.22	0.20	0.49	0.14
Color	-0.27	0.4	-0.02	0.06	0.20	-0.37	0.41	0.04	0.55
Texture	-0.03	0.53	0.00	0.22	-0.04	-0.07	-0.10	0.23	-0.49
Flavor	-0.02	0.53	-0.05	0.15	-0.01	-0.25	-0.32	-0.14	-0.15
Taste	0.01	0.46	0.37	-0.33	0.08	0.67	0.04	-0.15	0.20
Overall	0.07	0.17	-0.88	-0.25	-0.19	0.25	0.01	0.11	0.13

**Table S2b: Loading values for biplot for RE treatments**

	PC1	PC2	PC3	PC4	PC5	PC6	PC7	PC8	PC9
TPC	-0.34	-0.22	-0.10	0.26	0.03	0.16	0.66	0.32	0.04
TFC	-0.32	-0.17	0.09	0.58	0.23	-0.16	-0.02	-0.20	-0.49
DPPH	-0.24	-0.32	0.45	-0.49	0.61	-0.11	0.02	-0.03	0.08
FRAP	-0.32	-0.32	-0.11	0.17	-0.12	-0.21	-0.68	0.35	0.14
MCA	-0.3	-0.24	-0.39	-0.46	-0.28	0.06	0.00	-0.42	-0.45
Antidiabeti									
Activity	-0.35	-0.18	-0.26	-0.18	-0.17	0.16	0.09	0.22	0.37
Color	-0.18	0.53	-0.18	-0.26	0.16	-0.29	0.03	0.55	-0.41
Texture	-0.31	0.24	0.47	0.00	-0.20	0.66	-0.19	0.07	-0.17
Flavor	-0.33	0.21	0.32	0.01	-0.41	-0.57	0.20	-0.25	0.24
Taste	-0.27	0.35	-0.43	0.14	0.47	0.14	-0.11	-0.35	0.32
Overall	-0.31	0.35	0.09	0.00	-0.02	0.05	-0.07	-0.14	0.15