

Multi-omics reveals gut microbiome and metabolome-specific responses to sugar alcohols

Mengling Liu^{1,2,*}, Zhandong Yang^{3,*,#}, Boyu Liu^{2,4,*}, Hongbo Cheng⁴, Jiannan Qin², Pingjun Zhang², Tingfan Tang⁵, Fei Peng⁶, Jiguo Yang⁴, Ping Wei^{1,#}, Huihui Su^{2,#}

Supplementary Figures

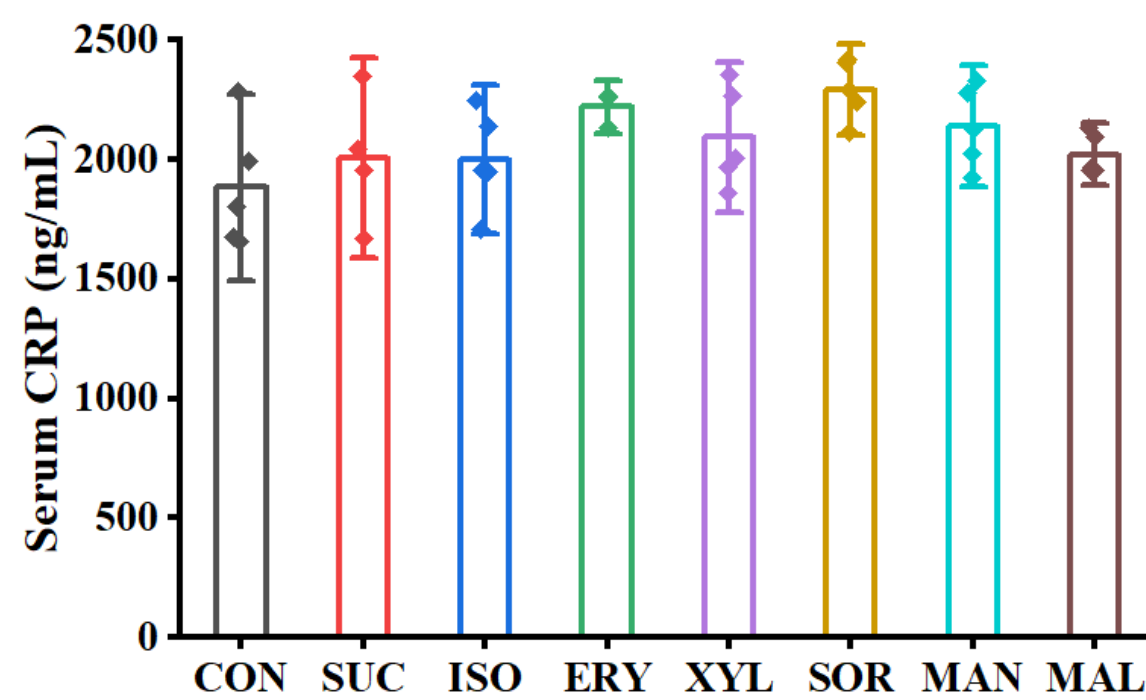


Figure S1. Effects of polyols on circulating inflammation in rats.
CRP. C-reactive protein.

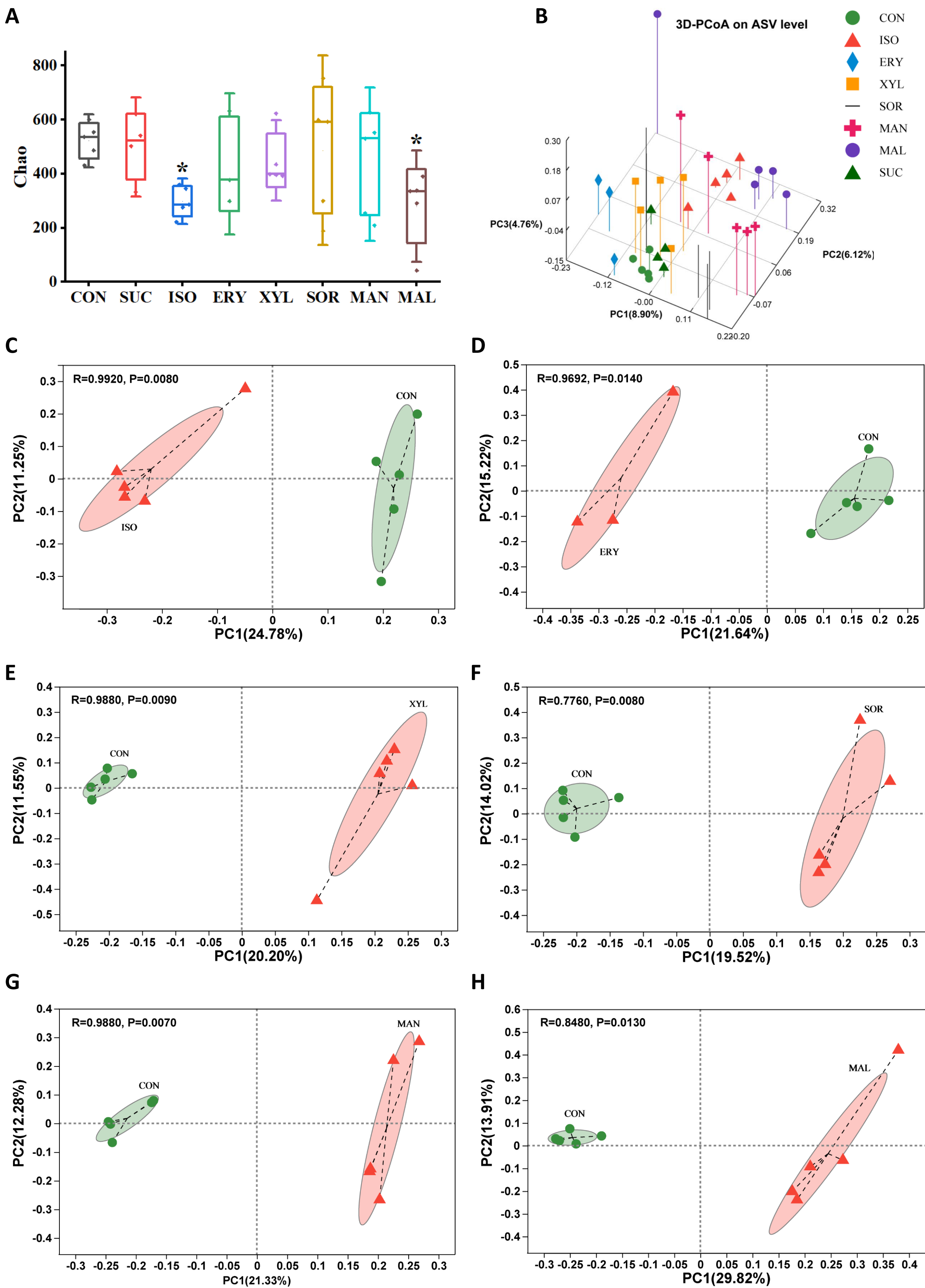


Figure S2. Sugar alcohol regulated gut microbiota diversity in rats, including α -diversity (A) and β -diversity (B-H).
 * represented $P < 0.05$ when compared to the control group.

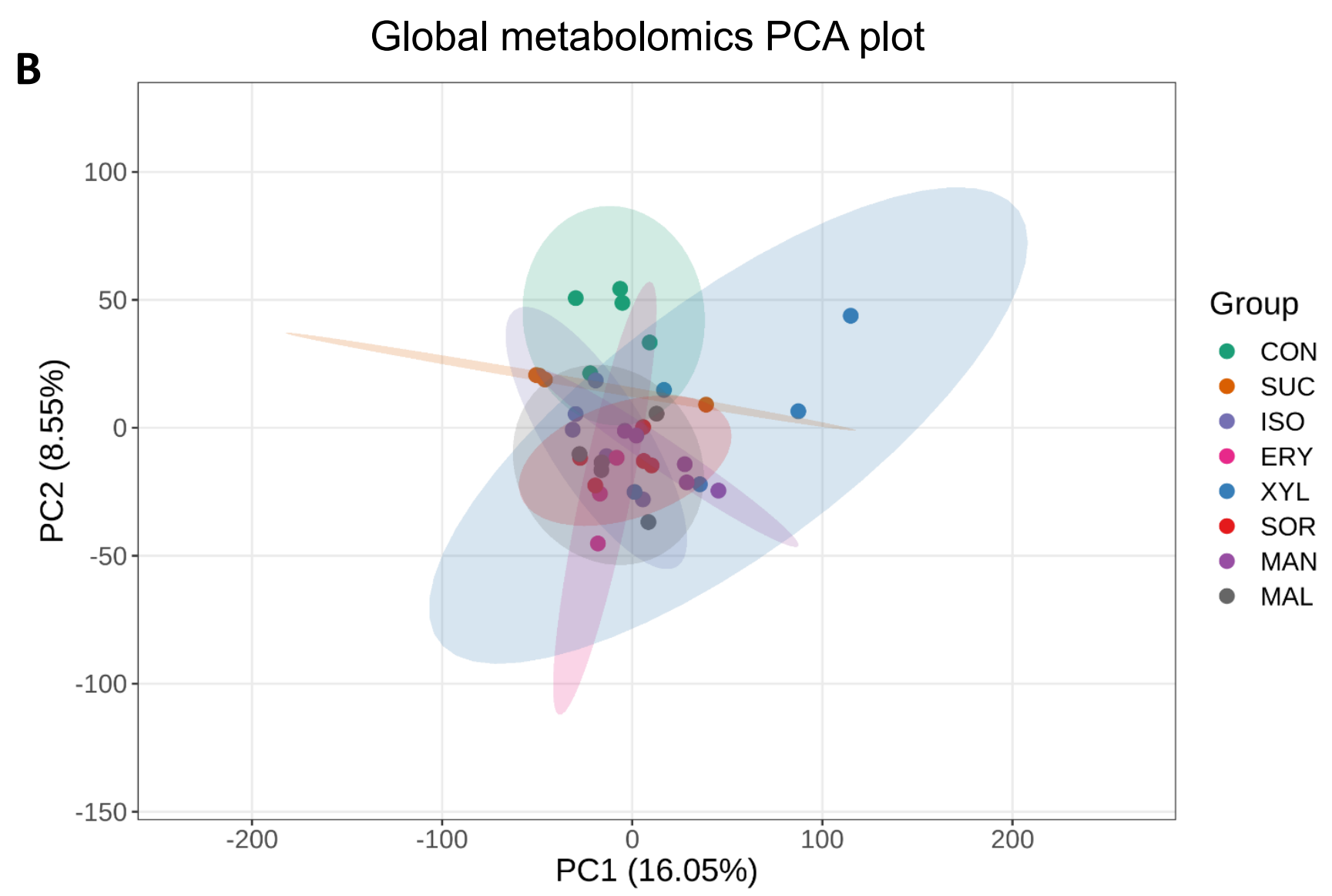
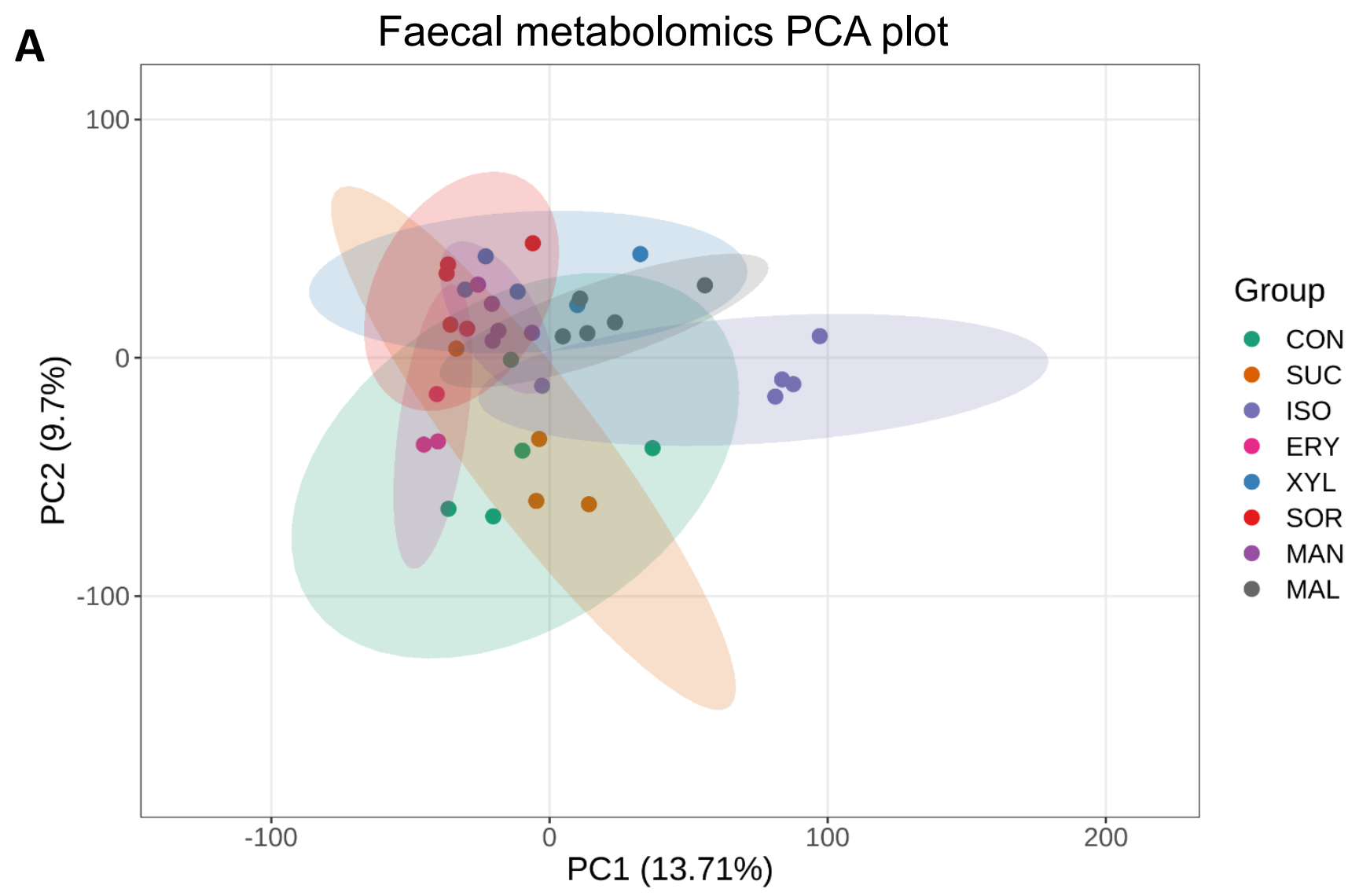


Figure S3. Polyols significantly modulated stool and global metabolome, reflected by unsupervised principal component analysis (PCA).

