

## Supporting Information

**Alleviation of 2'-fucosyllactose combined with *Bifidobacterium longum* BB536 on**

**loperamide-induced constipation and depressive-like behavior**

Zhongmei Tan<sup>a</sup>, Zihao Tian<sup>a</sup>, Xiaolei Duan<sup>a</sup>, He Zhang<sup>a</sup>, Wei Yu<sup>a</sup>, Qinggang Xie<sup>b</sup>, Dong Xu<sup>c,d</sup>,

Yingying Ding<sup>d</sup>, Rongbiao Ying<sup>d</sup>, Jiage Ma<sup>a,c,d\*</sup>, Qiqi Ren<sup>b,\*</sup>

<sup>a</sup> *Key Laboratory of Dairy Science, Ministry of Education, College of Food Science, Northeast Agricultural University, Harbin 150030, PR China*

<sup>b</sup> *Heilongjiang Feihe Dairy Co. Ltd., Beijing 100016, PR China*

<sup>c</sup> *Department of Diagnostic Ultrasound Imaging & Interventional Therapy, Zhejiang Cancer Hospital, Hangzhou Institute of Medicine (HIM), Chinese Academy of Sciences, Hangzhou, Zhejiang 310022, PR China*

<sup>d</sup> *Taizhou Campus of Zhejiang Cancer Hospital (Taizhou Cancer Hospital), Taizhou, Zhejiang 317502, PR China*

\*Corresponding authors.

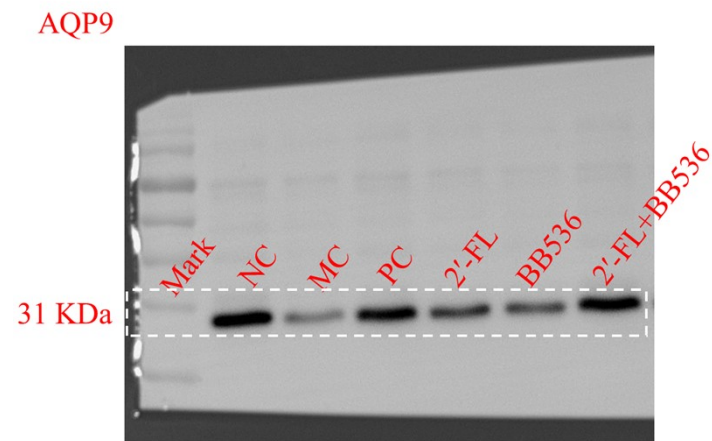
*E-mail addresses:* [jiage\\_ma@neau.edu.cn](mailto:jiage_ma@neau.edu.cn) (J. Ma); [rqqrenqiqi@163.com](mailto:rqqrenqiqi@163.com) (Q. Ren).

Phone/Fax: +86(0) 451 55190710

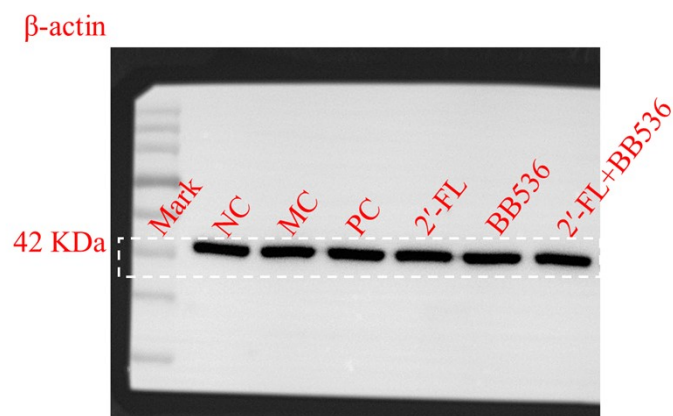
Address: No. 600 Changjiang Road, Xiangfang District, Harbin, PR China

## 1. The raw images of western blot

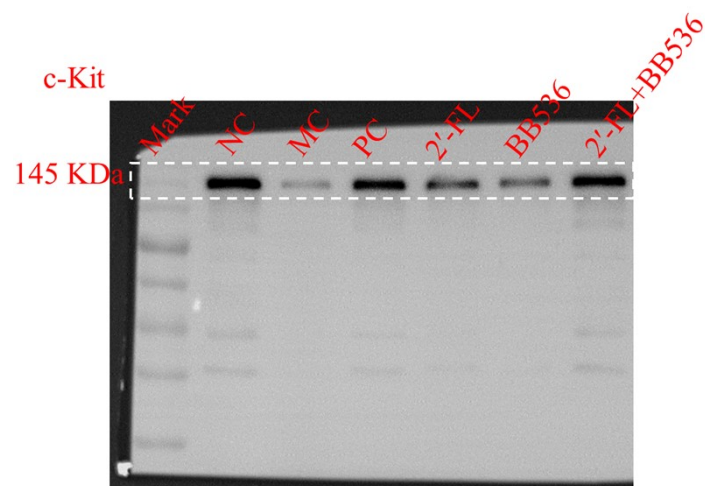
### 1.1 Representative protein blots of renal AQP9



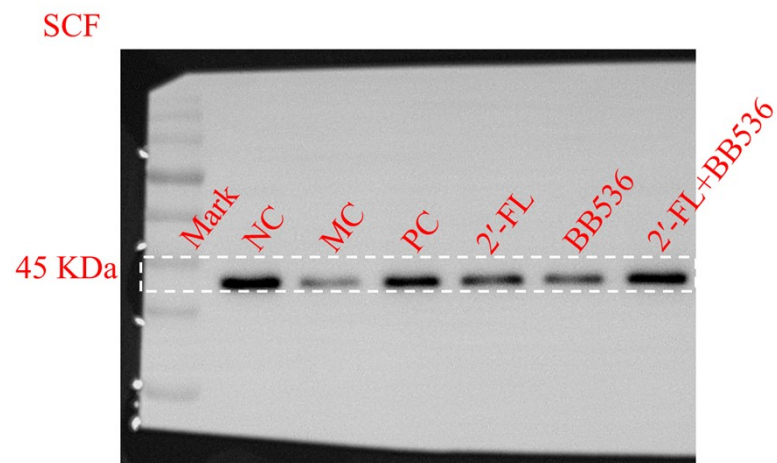
### 1.2 Representative protein blots of renal $\beta$ -actin



### 1.3 Representative protein blots of renal c-Kit



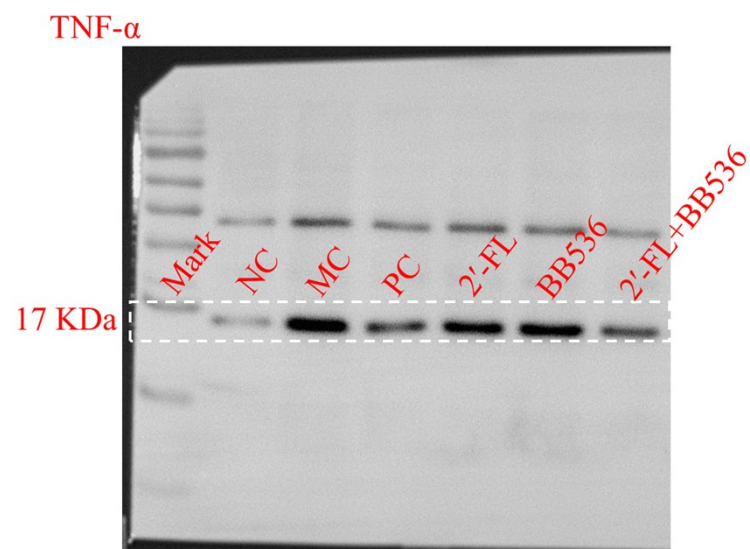
1.4 Representative protein blots of renal SCF



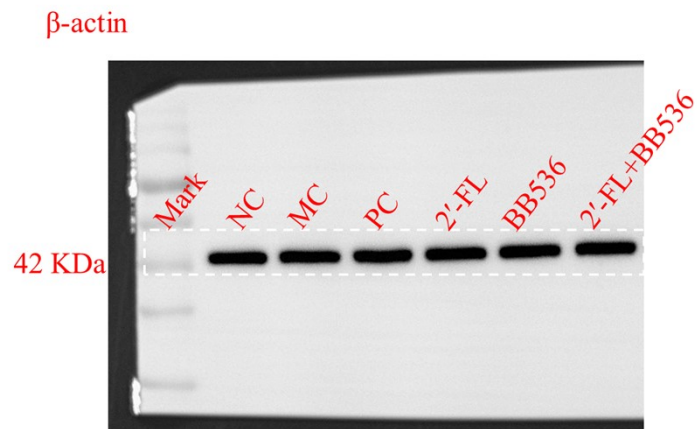
1.5 Representative protein blots of renal  $\beta$ -actin



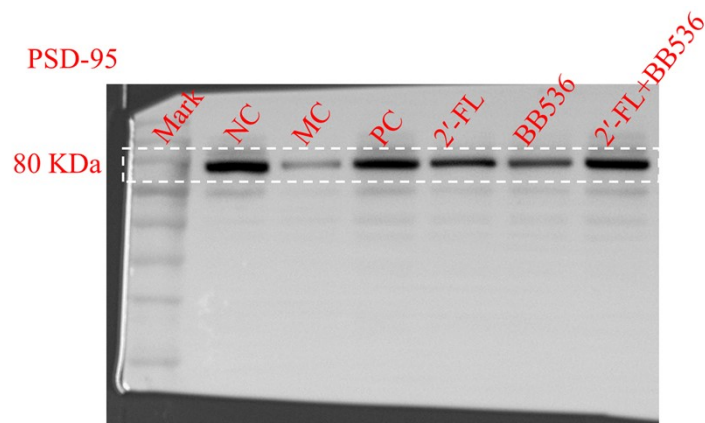
1.6 Representative protein blots of renal TNF- $\alpha$



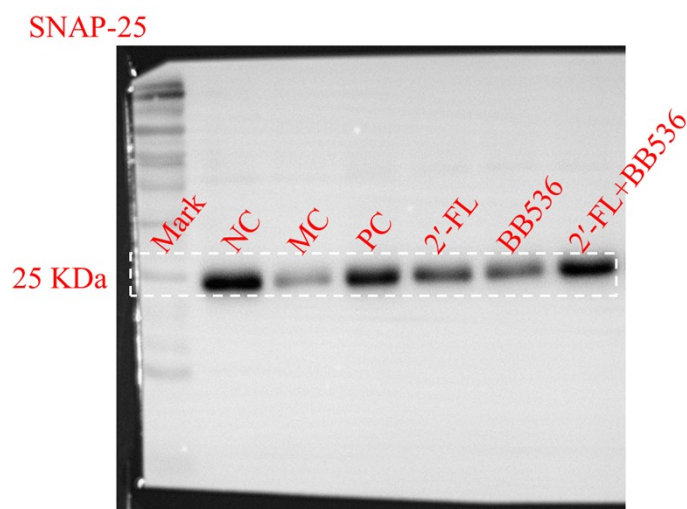
1.7 Representative protein blots of renal  $\beta$ -actin



1.8 Representative protein blots of renal PSD-95



1.9 Representative protein blots of renal SNAP-25



1.10 Representative protein blots of renal  $\beta$ -actin

$\beta$ -actin

