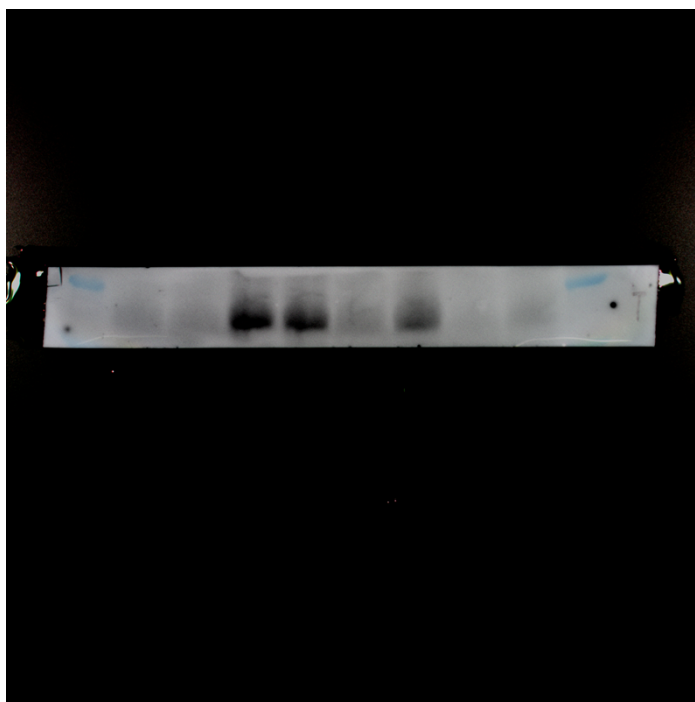


These three TIFF images correspond to the Western Blot experiment shown in Figure 1C. The eight lanes from left to right represent the following samples: WT, *Chd8*^{+/-}, WT, *Chd8*^{+/-}, WT, *Chd8*^{+/-}, WT, *Chd8*^{+/-}. Due to the large molecular weight of the CHD8 protein (280 kDa), it required separate transfer to the membrane. Different antibodies were used for distinct proteins: β -Tubulin (55 kDa) and GAPDH (35 kDa), therefore, the three proteins are presented as three separate strips.

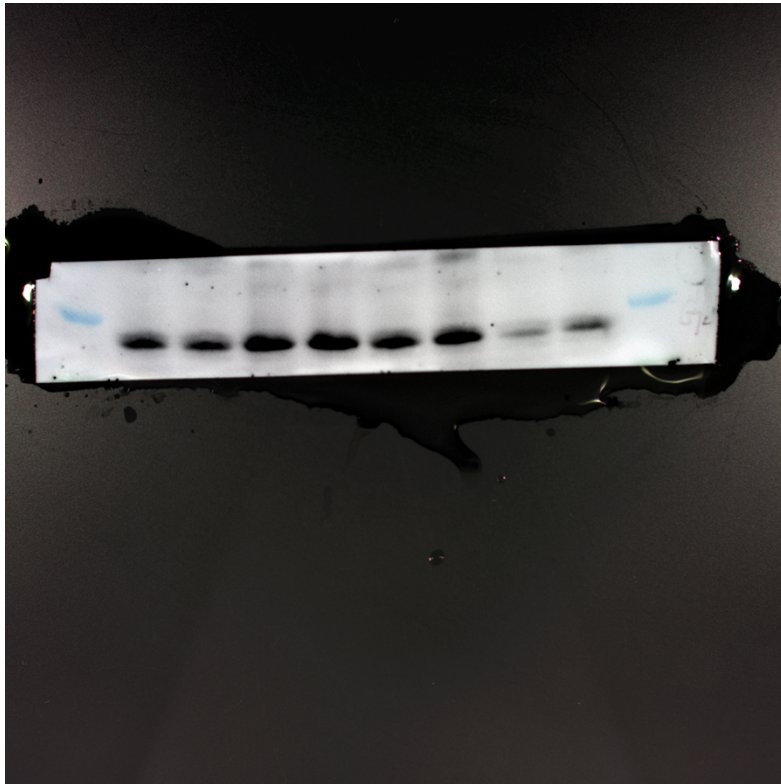
A



B



C



A represents CHD8 protein, B represents β -Tubulin protein, C represents GAPDH protein.