

## Supporting Information for

# Engineered Microbial Catalyst for Simultaneous Depolymerization and Upcycling of Polycaprolactone

Saint Moon Kim<sup>1,2</sup>, Yoonjoo Seo<sup>1</sup>, Renjing Jiang<sup>1</sup>, Linrui Tan<sup>2</sup>, Linduo Zhao<sup>4,5</sup>, John W. Scott<sup>4</sup>,  
Yong-Su Jin<sup>2,3</sup>, and Na Wei<sup>1,\*</sup>

<sup>1</sup>Department of Civil and Environmental Engineering, University of Illinois at Urbana-Champaign, 3221 Newmark Civil Engineering Laboratory, 205 N. Mathews Avenue, Urbana, Illinois 61801, United States

<sup>2</sup>Carl R. Woese Institute for Genomic Biology, University of Illinois at Urbana-Champaign, Urbana, Illinois 61801, United States

<sup>3</sup>Department of Food Science and Human Nutrition, University of Illinois at Urbana-Champaign, Urbana, Illinois 61801, United States

<sup>4</sup>Illinois Sustainable Technology Centre, Prairie Research Institute, University of Illinois at Urbana Champaign, Champaign, IL 61820, USA

<sup>5</sup>Illinois State Water Survey, Prairie Research Institute, University of Illinois at Urbana Champaign, Champaign, IL 61820, USA

\*Corresponding Author: E-mail: [nawei2@illinois.edu](mailto:nawei2@illinois.edu)

Pages = 15

Number of Figures = 11

Number of Tables = 1

## TABLE OF CONTENTS

### List of Supporting Figures

**Figure S1. Plasmid used in this study.** (A) pBbE1a-CsgA-FsC for depolymerization module construction, (B) pTac15K-ChnDE for bioconversion module construction.

**Figure S2. Congo red (CR) binding assay for biocatalysts.** (A) Cell pellet of negative control stained with CR after centrifugation. (B) Cell pellet of PCL-D stained with CR after centrifugation. (C) Cell pellet of PCL-DU after CR staining.

**Figure S3. Production of adipic acid from 6-HHA by PCL-U biocatalyst.** Conversion of 6-HHA to adipic acid by PCL-U biocatalyst was tested with initial 6-HHA concentrations of (A) 5 g/L and (B) 10 g/L. All experiments were conducted in triplicates and values represent the mean  $\pm$  standard error.

**Figure S4. Fraction of 6-HHA among total soluble products at day 2 under different temperatures (30–42 °C) and shaking speeds (0–250 rpm).** The 6-HHA fraction was calculated as the percentage of 6-HHA concentration relative to the total soluble product concentration (6-HHA + adipic acid, g/L). All the experiments were conducted in triplicates and values represent the mean  $\pm$  standard error.

**Figure S5. Production of adipic acid and 6-HHA after 5 days of incubation in fed-batch PCL upcycling with different initial cell densities of PCL-DU biocatalyst.** PCL-DU cells with different initial cell densities ( $OD_{600} = 5, 10, \text{ and } 20$ ) were incubated in YESCA medium supplemented with antibiotics, 0.8 mM IPTG, and 200 mg of PCL film, with 10 $\times$  concentrated YESCA medium and antibiotics supplemented every 24 h. An additional 200 mg and 100 mg of PCL film were added on day 1 and day 2, respectively. All the experiments were conducted in triplicates and values represent the mean  $\pm$  standard error.

**Figure S6. Time-course degradation of post-consumer PCL product.** The PCL 3D printed product (3.17 x 5.08 cm, 5g) was degraded by PCL-DU, and images were taken every 24 h.

**Figure S7. Differential scanning calorimetry (DSC) analysis of purified adipic acid.** The purity of adipic acid was calculated according to the van't Hoff equation, using TA Universal Analysis software.

**Figure S8. Comparison between the Infrared (IR) spectrum of the nylon-6,6 sample synthesized with PCL-derived adipic acid (top) and the polyamide 6/6,6 standard from the OMNIC™ software library.** The nylon-6,6 synthesized with PCL-derived adipic acid shows strong match with library spectrum.

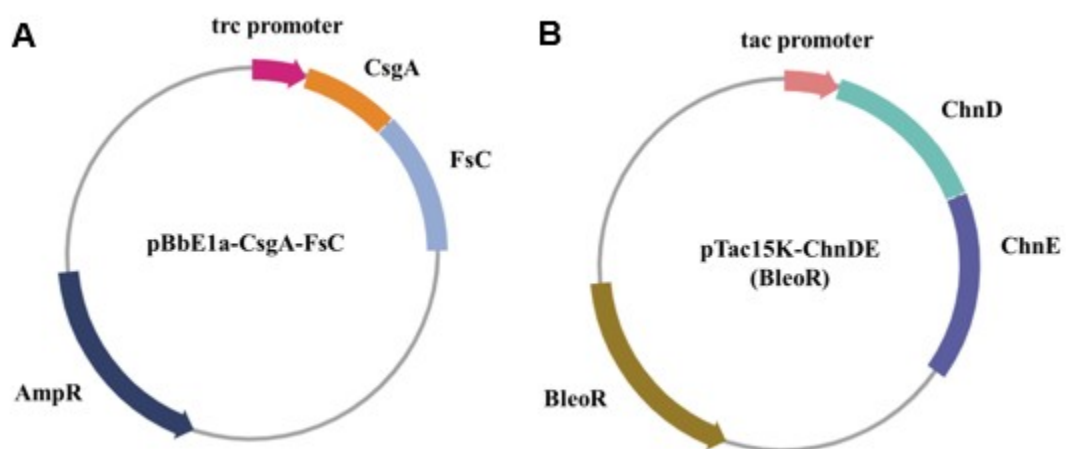
**Figure S9. Pyrolysis–GC–MS spectrometry of nylon-6,6 synthesized from commercial adipic acid (top) and PCL-derived adipic acid (bottom).**

**Figure S10. Overlay of pyrolysis–GC-MS chromatograms of nylon-6,6 synthesized using commercial adipic acid (black) and PCL-derived adipic acid (purple).** Both samples exhibit nearly identical chromatographic profiles with consistent retention times and peak intensities, confirming two synthesis methods produce chemically equivalent polymers.

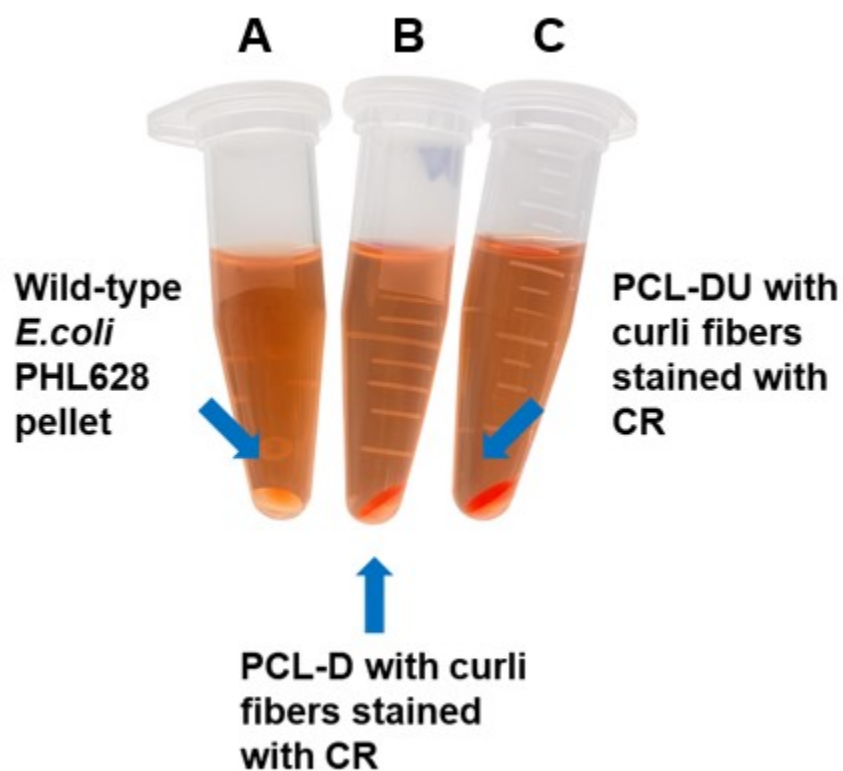
**Figure S11. Thermogravimetric analysis (TGA) of nylon-6,6 synthesized with commercial and PCL-derived adipic acid.** Both nylon-6,6 shows similar thermal properties.

List of Supporting Tables

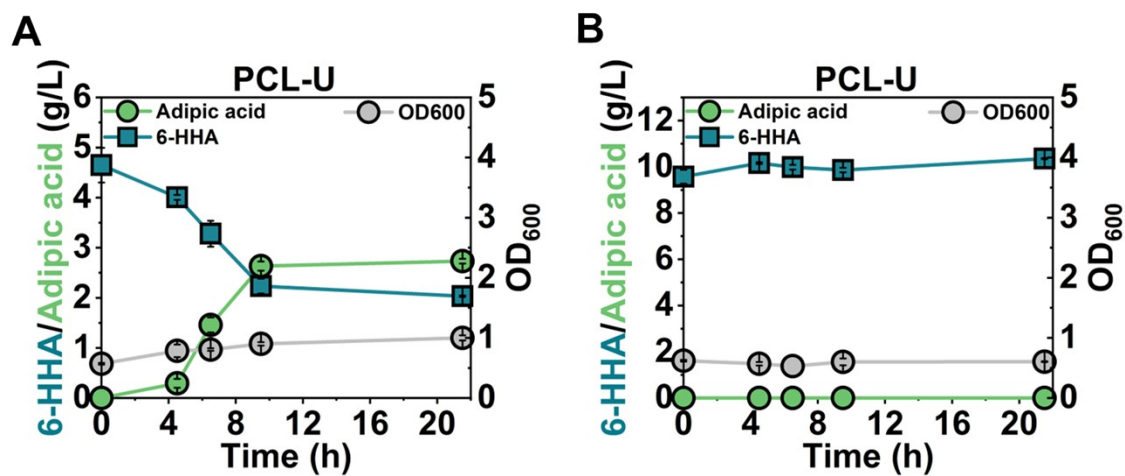
**Table S1. Primers used in this study**



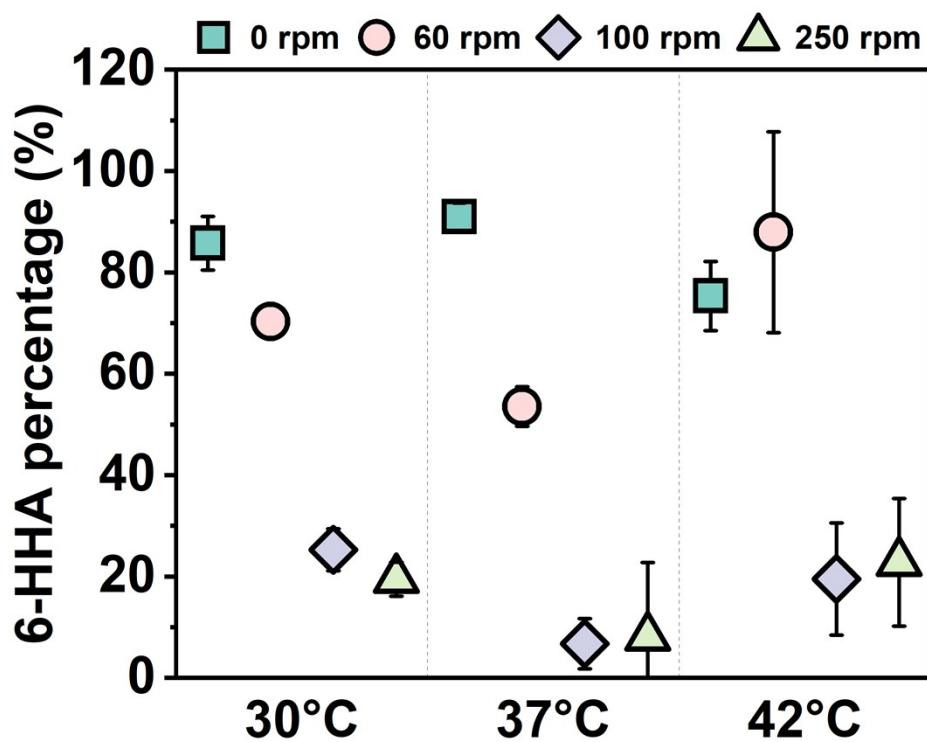
**Figure S1. Plasmid used in this study.** (A) pBbE1a-CsgA-FsC for depolymerization module construction, (B) pTac15K-ChnDE for bioconversion module construction.



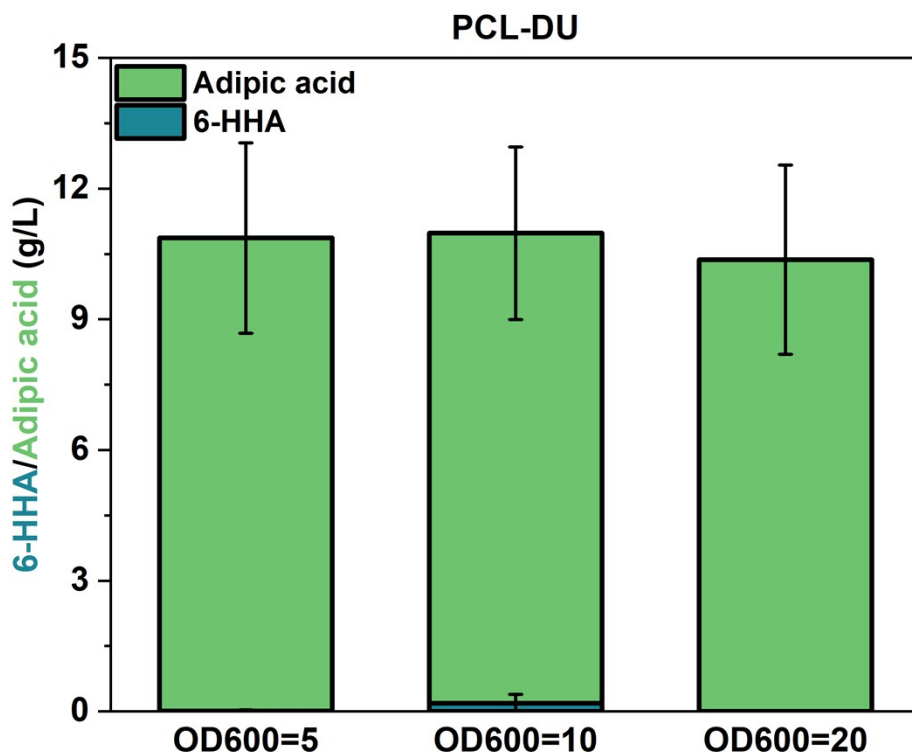
**Figure S2. Congo red (CR) binding assay for biocatalysts.** (A) Cell pellet of negative control stained with CR after centrifugation. (B) Cell pellet of PCL-D stained with CR after centrifugation. (C) Cell pellet of PCL-DU after CR staining.



**Figure S3. Production of adipic acid from 6-HHA by PCL-U biocatalyst.** Conversion of 6-HHA to adipic acid by PCL-U biocatalyst was tested with initial 6-HHA concentrations of (A) 5 g/L and (B) 10 g/L. All experiments were conducted in triplicates and values represent the mean  $\pm$  standard error.

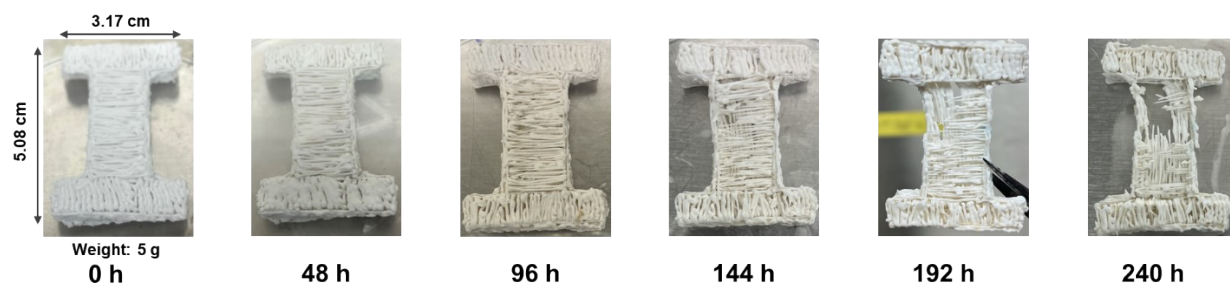


**Figure S4. Fraction of 6-HHA among total soluble products at day 2 under different temperatures (30–42 °C) and shaking speeds (0–250 rpm).** The 6-HHA fraction was calculated as the percentage of 6-HHA concentration relative to the total soluble product concentration (6-HHA + adipic acid, g/L). All the experiments were conducted in triplicates and values represent the mean  $\pm$  standard error.

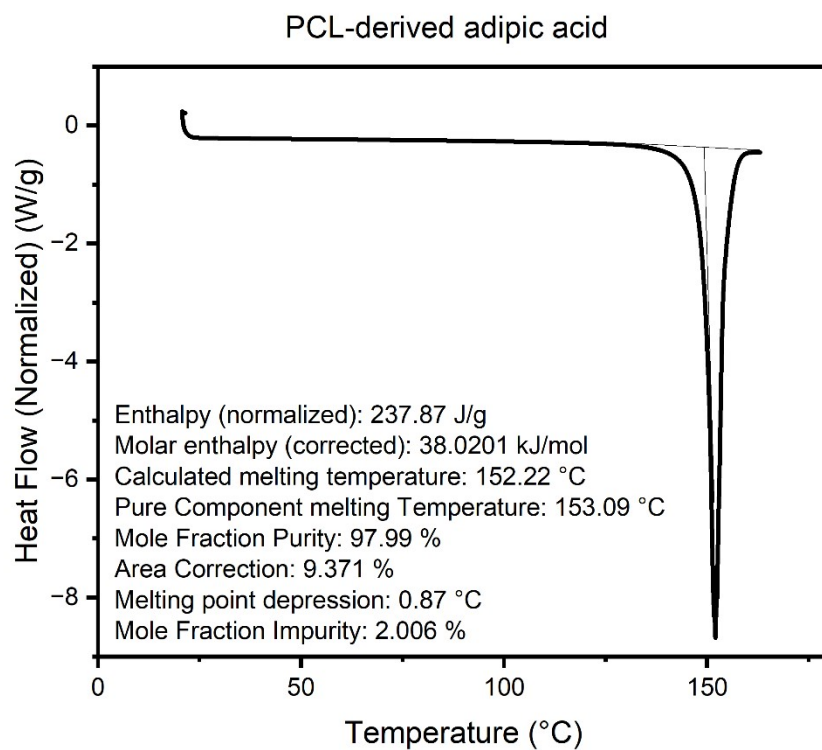


**Figure S5. Production of adipic acid and 6-HHA after 5 days of incubation in fed-batch PCL upcycling with different initial cell densities of PCL-DU biocatalyst.** PCL-DU cells with different initial cell densities ( $OD_{600} = 5, 10,$  and  $20$ ) were incubated in YESCA medium supplemented with antibiotics,  $0.8$  mM IPTG, and  $200$  mg of PCL film, with  $10\times$  concentrated YESCA medium and antibiotics supplemented every  $24$  h. An additional  $200$  mg and  $100$  mg of PCL film were added on day 1 and day 2, respectively. All the experiments were conducted in triplicates and values represent the mean  $\pm$  standard error.

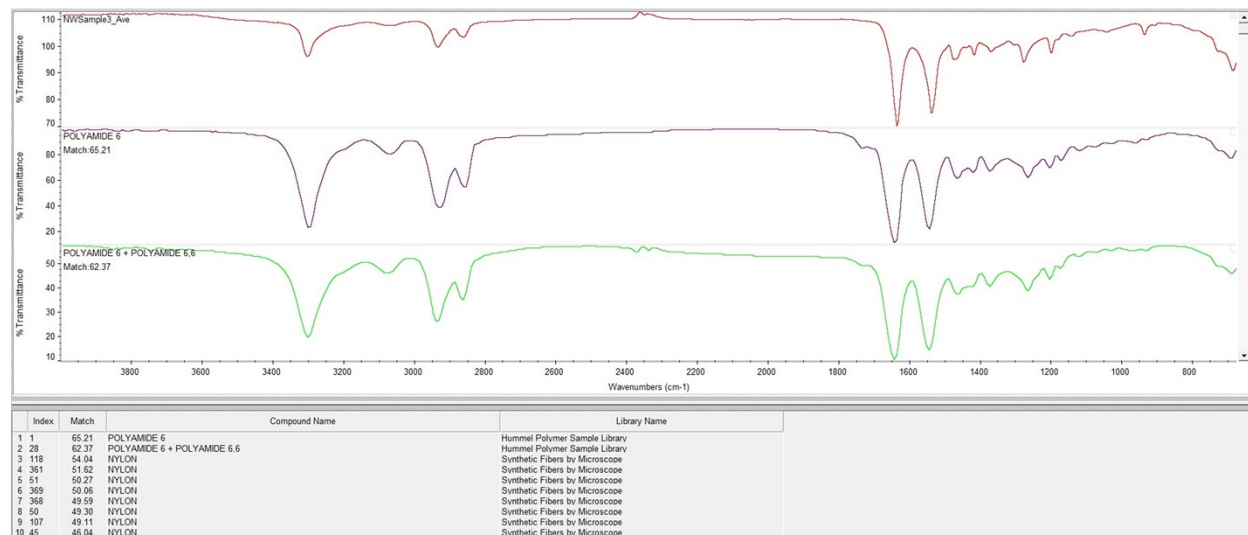




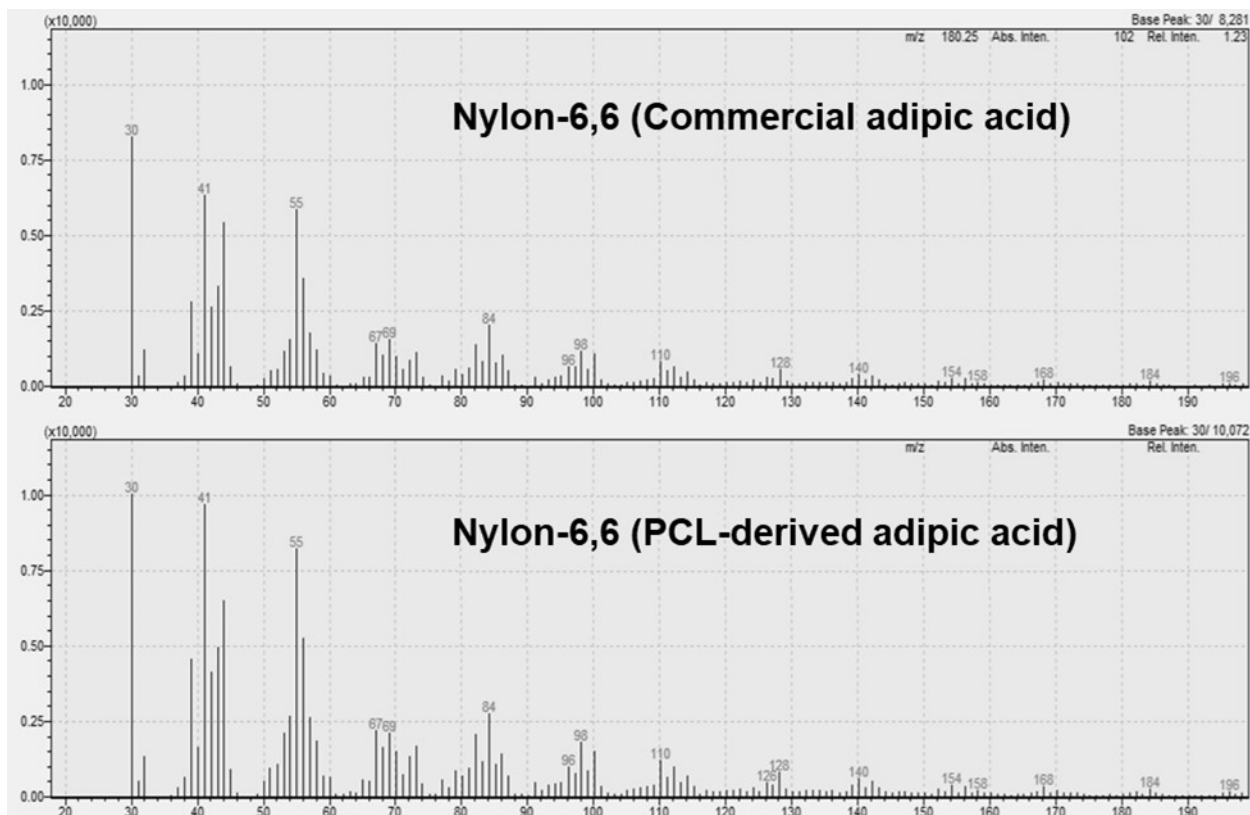
**Figure S6. Time-course degradation of post-consumer PCL product.** The PCL 3D printed product (3.17 x 5.08 cm, 5g) was degraded by PCL-DU, and images were taken every 24 h.



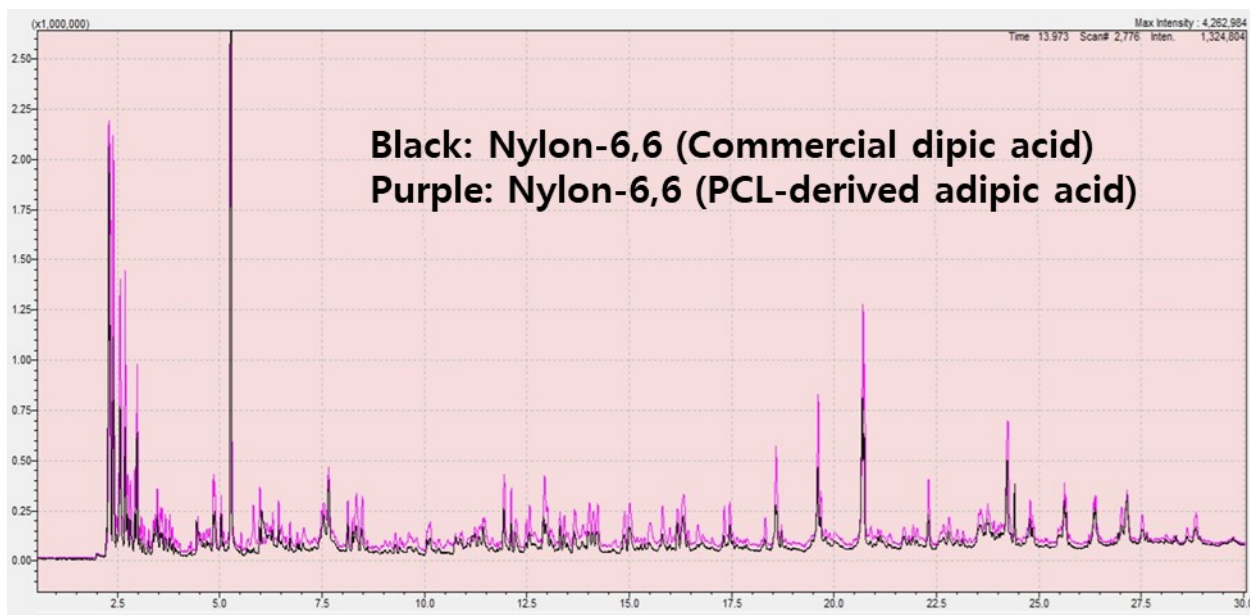
**Figure S7. Differential scanning calorimetry (DSC) analysis of purified adipic acid.** The purity of adipic acid was calculated according to the van't Hoff equation, using TA Universal Analysis software.



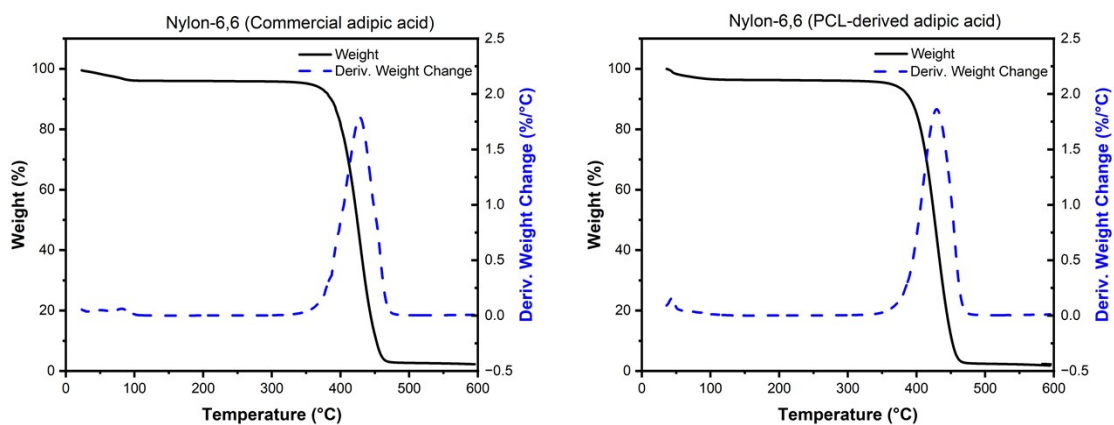
**Figure S8. Comparison between the Infrared (IR) spectrum of the nylon-6,6 sample synthesized with PCL-derived adipic acid (top) and the polyamide 6/6,6 standard from the OMNIC™ software library. The nylon-6,6 synthesized with PCL-derived adipic acid shows strong match with library spectrum.**



**Figure S9. Pyrolysis–GC-MS spectrometry of nylon-6,6 synthesized from commercial adipic acid (top) and PCL-derived adipic acid (bottom).**



**Figure S10. Overlay of pyrolysis–GC–MS chromatograms of nylon-6,6 synthesized using commercial adipic acid (black) and PCL-derived adipic acid (purple). Both samples exhibit nearly identical chromatographic profiles with consistent retention times and peak intensities, confirming two synthesis methods produce chemically equivalent polymers.**



**Figure S11. Thermogravimetric analysis (TGA) of nylon-6,6 synthesized with commercial and PCL-derived adipic acid. Both nylon-6,6 shows similar thermal properties.**

**Table S1. Primers used in this study**

<b>Primers used in this study</b>	<b>Sequence</b>
Primer 1	5'-TAAGCAGGATCCATGAAAT-3'
Primer 2	5'-TAAGCATCTCGAGTTATGC-3'
Primer 3	5'-TAAGCAGAATTCATGCATTGTTATTGCGTAACA-3'
Primer 4	5'-TAAGCACTGCAGTTAATTCAGTTGCGTGATAAATTTG-3'
Primer 5	5'-CACTTCGTGGCCGAGGAGCAGGACTGAGCATTGGTAACCTGGTATGAGT-3'
Primer 6	5'-CGGAACGGCACTGGTCAACTTGGCCATAACACCCCTTGTATTACTGTTTATGT-3'
Primer 7	5'-TACATAAACAGTAATACAAGGGGTGTTATGGCCAAGTTGACCAGT-3'
Primer 8	5'-TGCTGACTCATAACCAGGTTACCAATGCTCAGTCCTGCTCCTCGG-3'