

Supporting information

Luminescent Thermometry in NaSrY(MoO₄)₃: Tm³⁺/Yb³⁺: Achieving High Thermal Sensitivities Across the Visible and Near-Infrared-I/III Windows

Mariem Yangui (a), Kamel Saidi (a,b)*, Christian Hernández-Álvarez (c), Mohamed Dammak (a), I. R. Martín (c),

(a) Laboratoire de Physique Appliquée, Groupe des Matériaux Luminescents, Faculté des Sciences de Sfax, Département de Physique, Université de Sfax, BP 1171 Sfax, Tunisia.

(b) University of Sfax, Department of Physics, Sfax Preparatory Engineering Institute, 1172 - 3000Sfax, Tunisia . E-mail: saidikamel494@gmail.com

(c) Universidad de La Laguna, Departamento de Física, and IMN Apdo. Correos 456, E-38206, San Cristóbal de La Laguna, Santa Cruz de Tenerife, Spain.

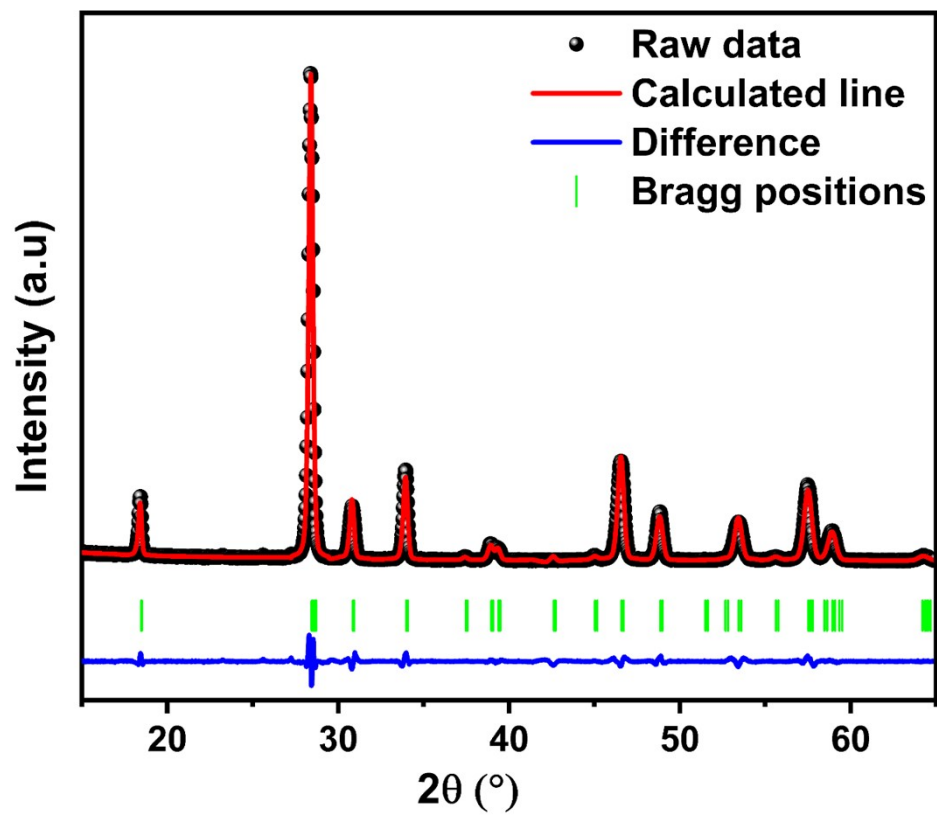


Figure S1: Rietveld refinement of XRD data for NSYM: $\text{Tm}^{3+}/\text{Yb}^{3+}$.

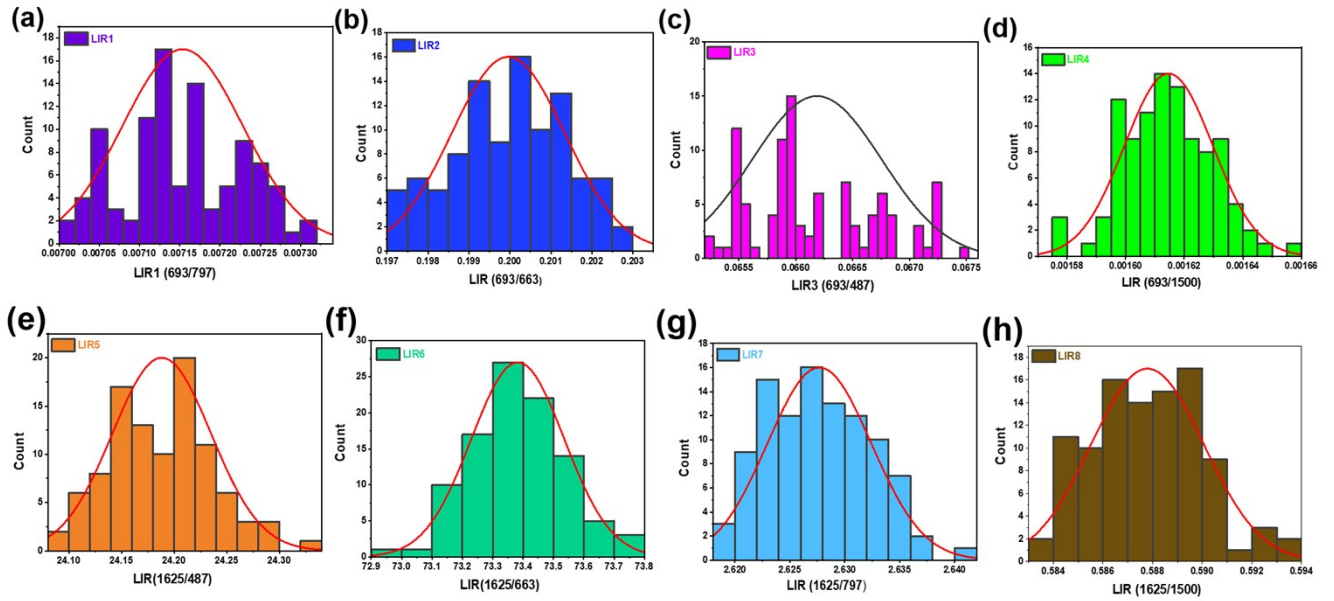


Figure S2: Distribution of the LIR (a) (693/797), (b) (693/663), (c) (693/487), (d) (693/1500), (e) (1625/487), (f) (1625/663), (g) (1625/797) and (h) (1625/1500).obtained from 100 measurements of NSYM: $\text{Tm}^{3+}/\text{Yb}^{3+}$ at different temperatures.

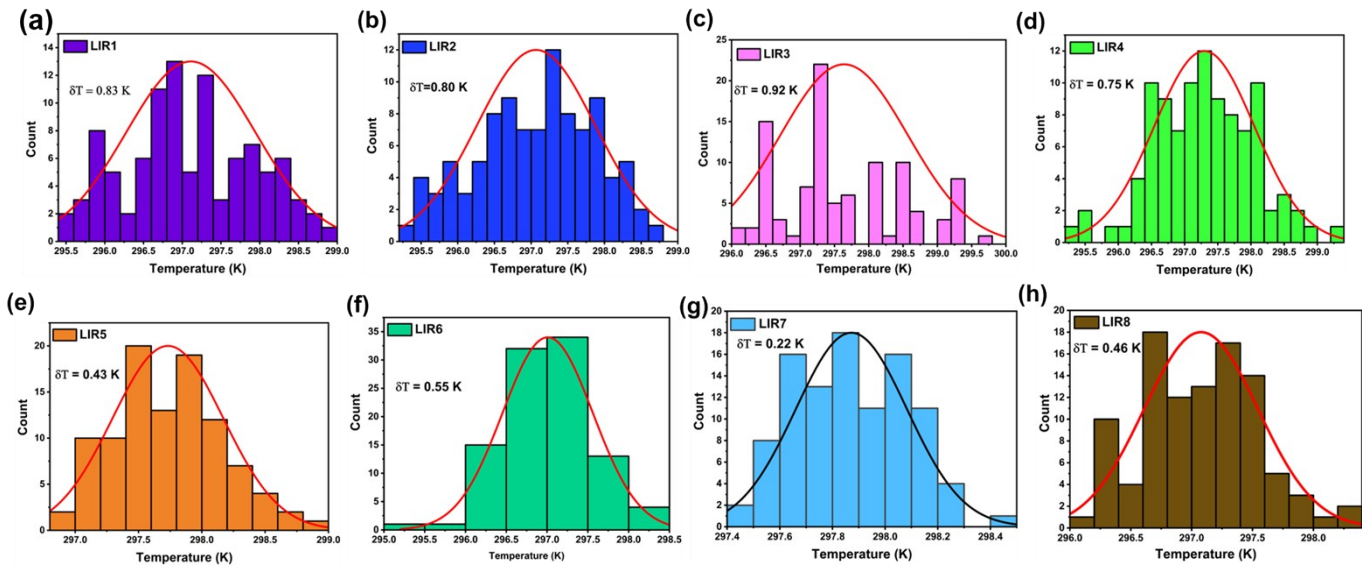


Figure S3: Distribution of the Temperature (a) (693/797), (b) (693/663), (c) (693/487), (d) (693/1500), (e) (1625/487), (f) (1625/663), (g) (1625/797) and (h) (1625/1500).

