

Supporting Information

Sustainable and Scalable Polyphenolic Bioadhesives for Hemostasis and Surface Functionalization

Eunu Kim^a, Jeongin Seo^a, and Haeshin Lee^{a,b,*}

^aDepartment of Chemistry, Korea Advanced Institute of Science and Technology (KAIST),
291 Daehak-ro, Yuseong-gu, Daejeon 34141, Republic of Korea

^bPolyphenol Factory Inc., 193 Moonji-ro, Yuseong-gu, Daejeon 34051, Republic of Korea

* E-mail: haeshin@kaist.ac.kr

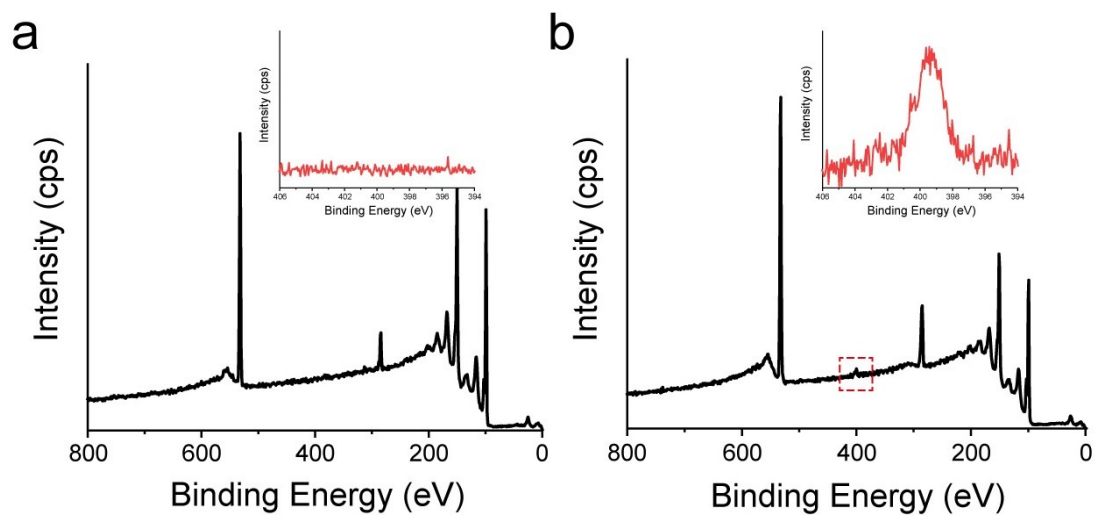


Figure S1. XPS survey spectra (black) and corresponding N1s (inset, red) spectra of SiO₂ substrates (a) before and (b) after 5 min CHI-B coating.

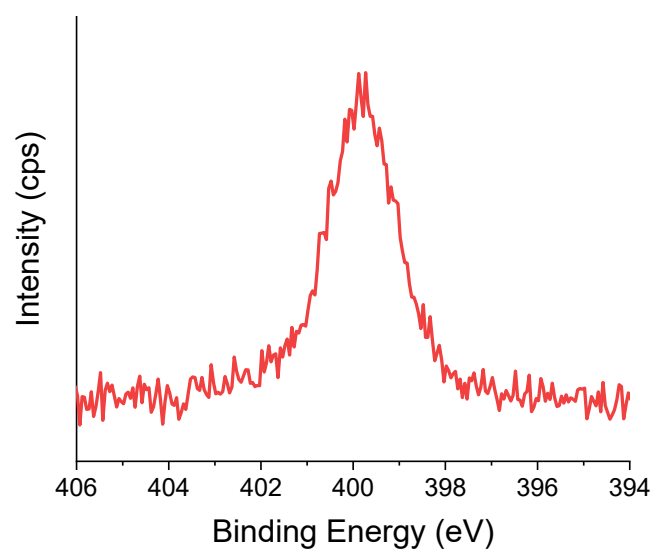


Figure S2. XPS N1s spectrum of CHI-B coated slide glass after 1 year.

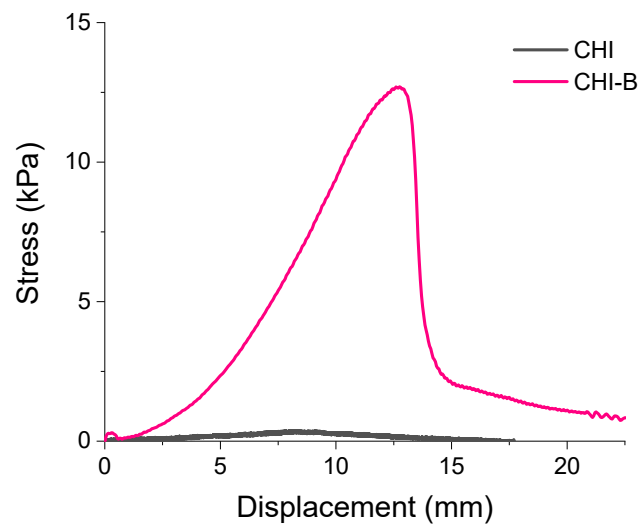


Figure S3. Stress–displacement curves of CHI (black) and CHI-B (pink) adhered to mouse skin. CHI and CHI-B were first applied to mouse skin, and adhesive tape (Scotch tape) was attached to the opposite side prior to tensile testing.