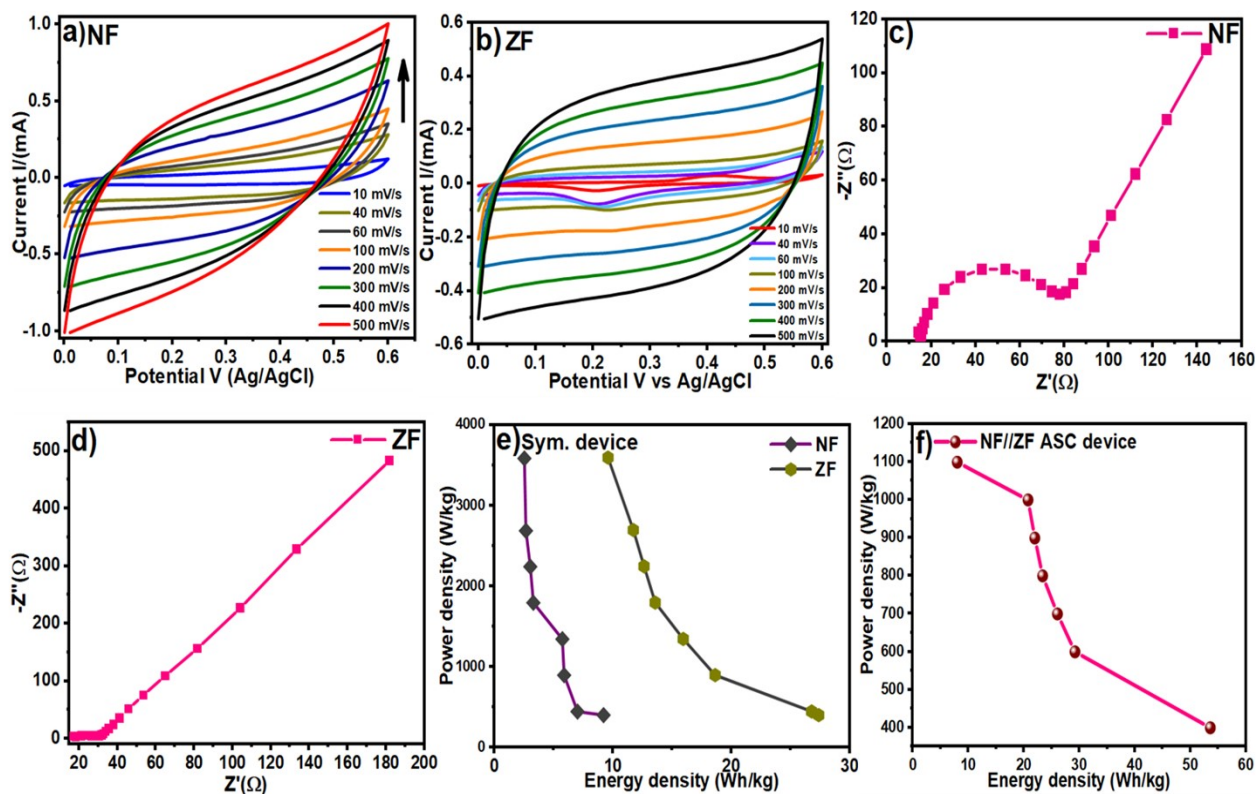
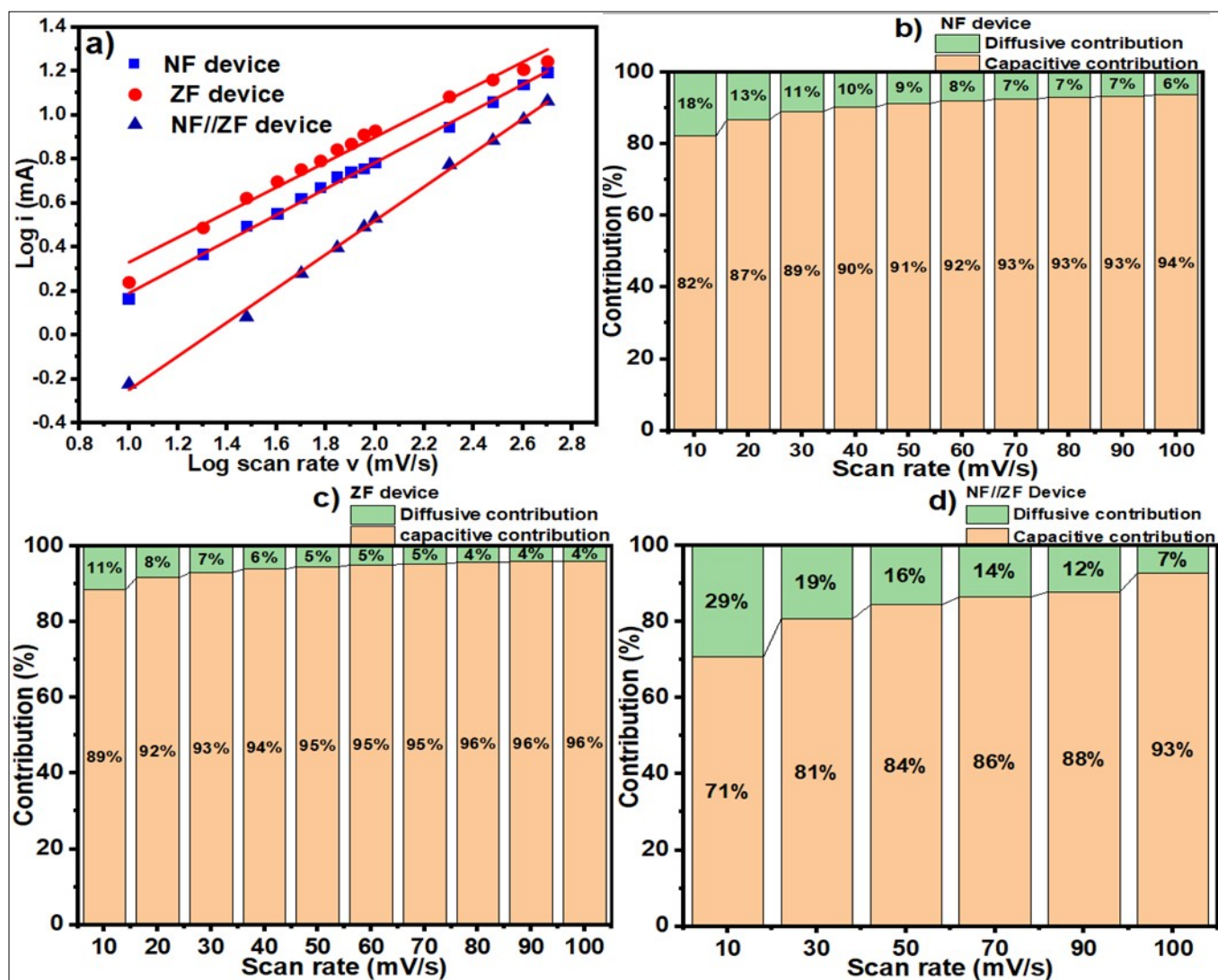


Fig. S1 Illustration of the synthesis method



Supplementary Fig. S2 (a-b) Three electrode CV of NF & ZF from 10 to 500 mV/s, (c-d) EIS of NF & ZF, (e) Ragone plot of symmetric device NF & ZF, (f) Ragone plot of asymmetric device NF//ZF.



Supplementary Fig. S3 a) Logarithmic plots of the Power's law at specific potential for CV of NF, ZF and NF//ZF devices, (b-d) Capacitive and diffusion-controlled contribution for CV of NF, ZF and NF//ZF devices.