

Supplementary material

**Phytochemical Profiling and Wound Healing Properties of Essential Oil Isolated from
Rosmarinus officinalis Aerial Parts: GC/MS Analysis and *In-Vitro* Studies**

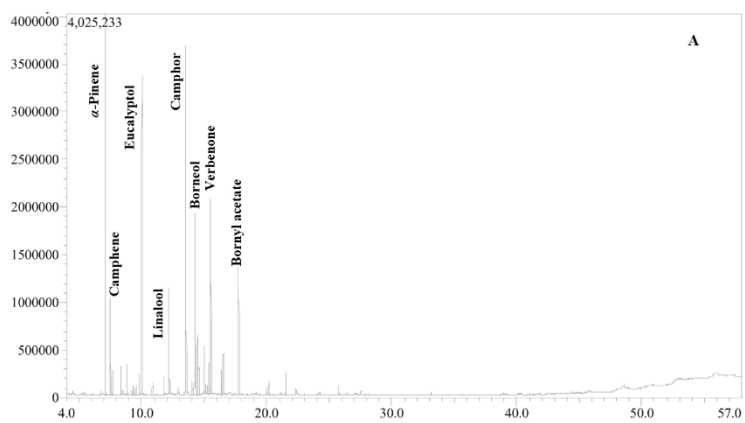
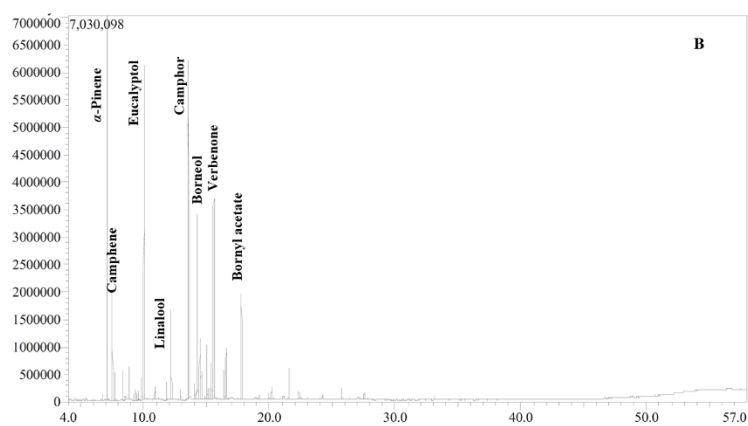
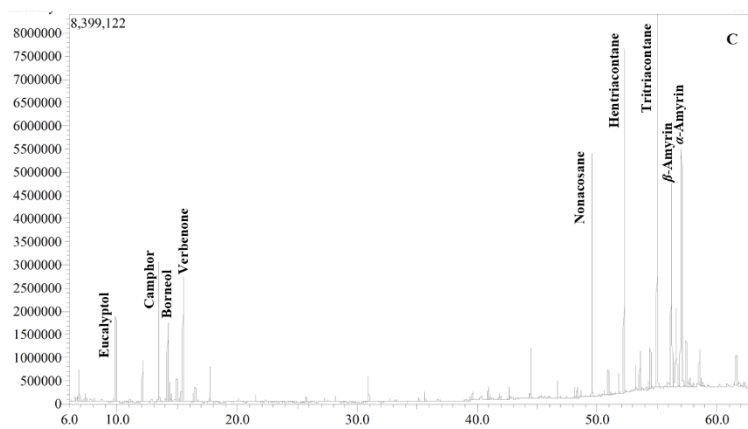
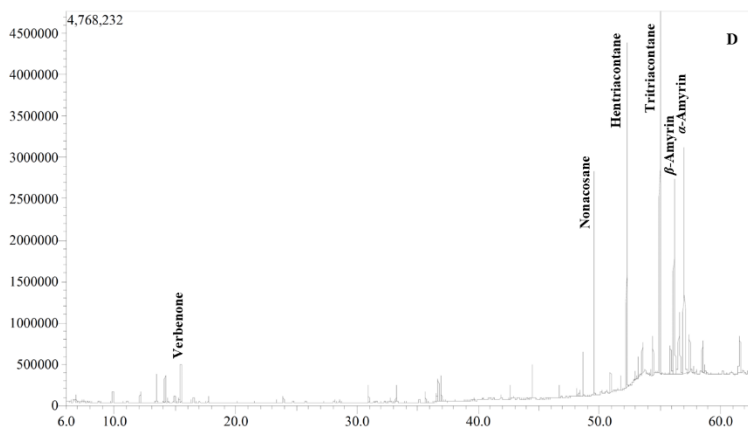
A**B****C****D**

Figure S1. GC chromatogram of FRHD (A), DRHD (B), FRSE (C), DRSE (D). FRHD: Fresh rosemary hydro-distillation; DRHD: Dried rosemary hydro-distillation; FRSE: Fresh rosemary solvent extraction; DRSE: Dried rosemary solvent extraction.