

SUPPORTING INFORMATION

Fabrication of Biocompatible Plasmonic Sensing Platforms Via Direct Growth of Metal Nanomaterials on Modified Silk Films

Marie E. Kerns, Anika Guo, Wynn Wee, Annabella Talbott, Megan J. Downer, Teagan Hamlett, Jeremy M. Talusig, Camden S. Losey, Amanda R. Murphy, Ying Bao*

Department of Chemistry, Western Washington University, 516 High St., Bellingham, WA 98225-9150, USA

E-mail: baoy@wwu.edu

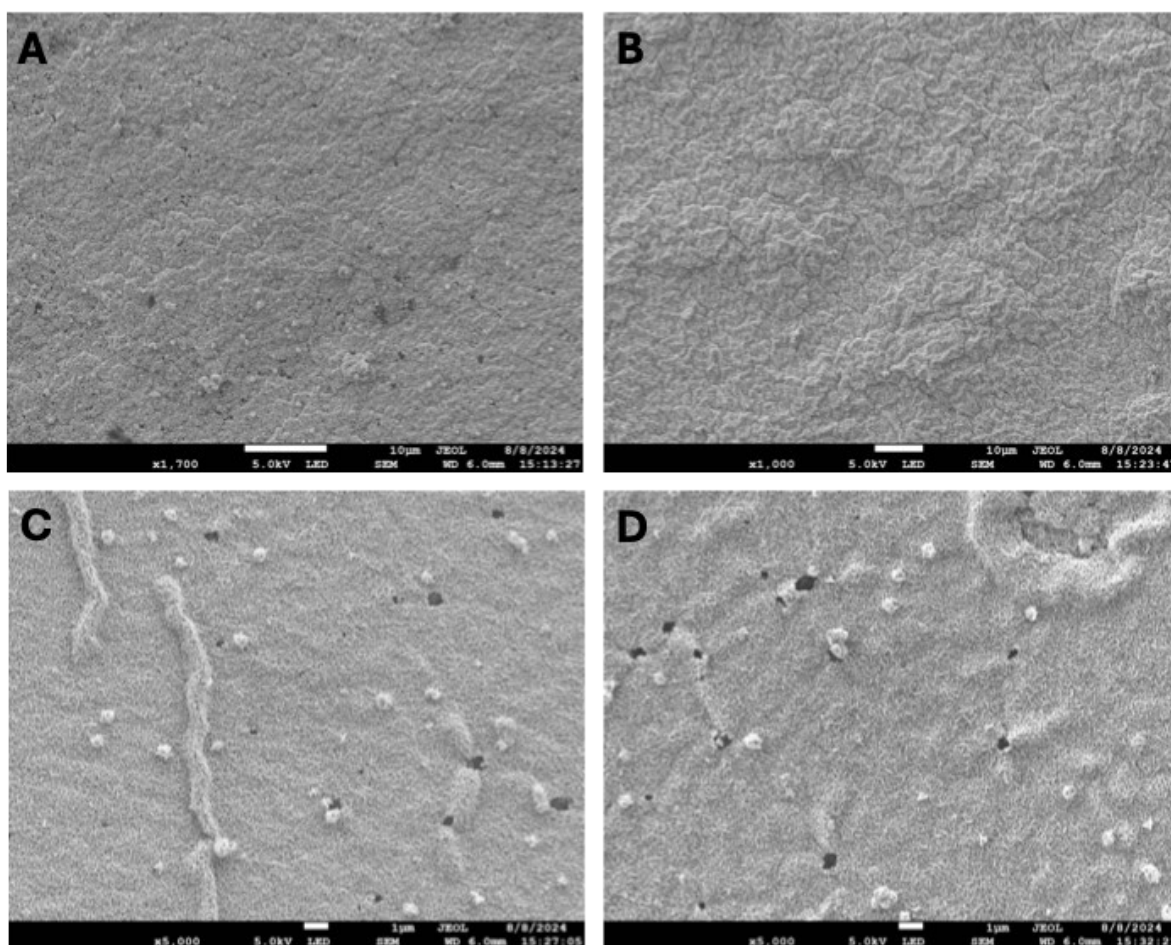


Figure S1. Large area SEM images of Ag@silk films with various growth times demonstrating the extent of surface coverage at each time point: (A) 5 min; (B) 10 min; (C) 15 min; (D) 20 min.