

Supplementary Information

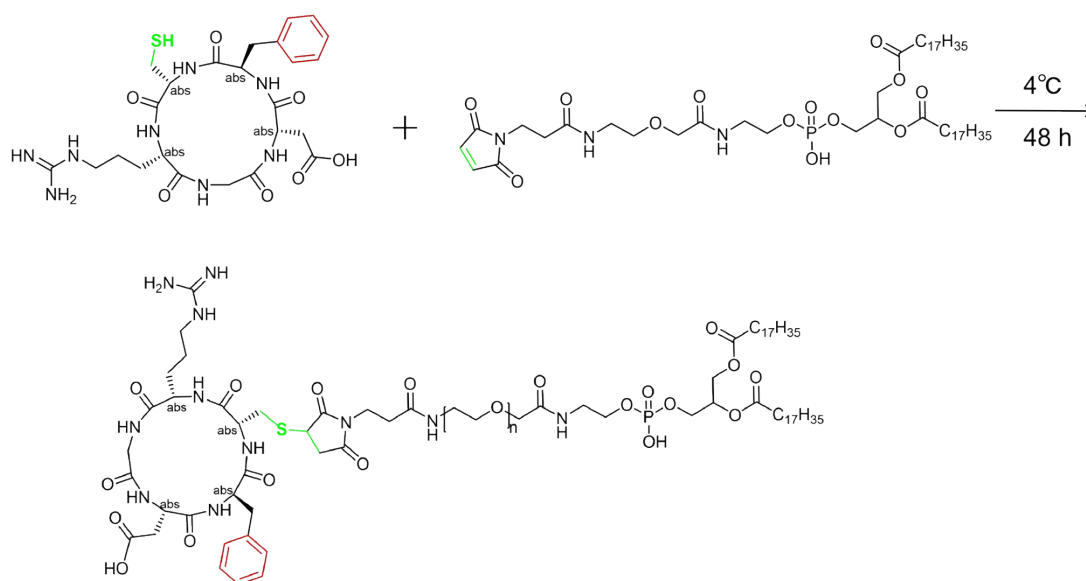


Fig. S1 Synthetic route of DSPE-PEG₂₀₀₀-RGD using DSPE-PEG₂₀₀₀-Mal and cRGD copolymers in 4°C for two days.

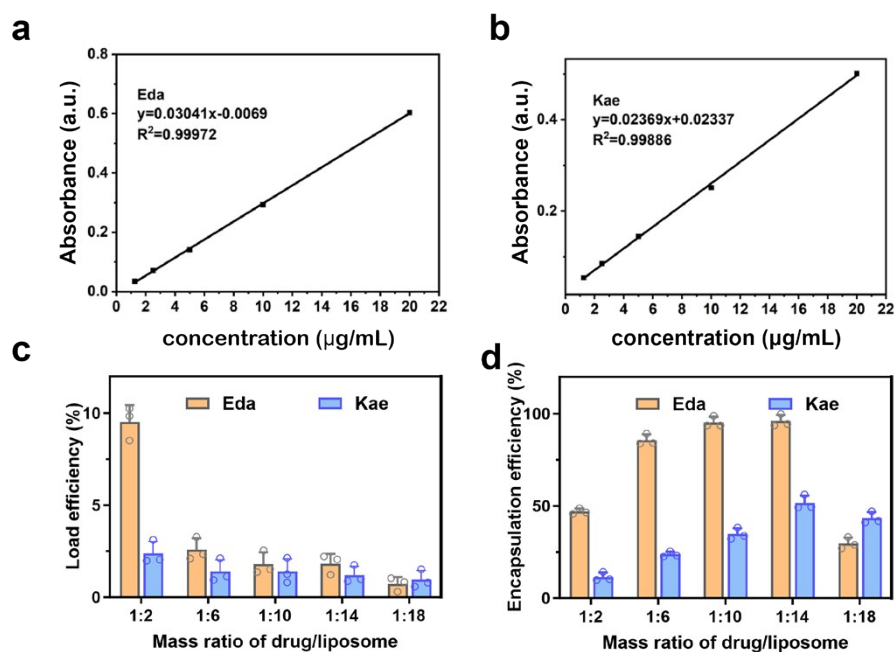


Fig. S2 Loading and encapsulation efficiency of different drug-lipid ratios. (a) Standard curve of edaravone aqueous solution. (b) Standard curve of kaempferol aqueous solution. (c) Drug loading of different drug-lipid ratios. (d) Encapsulation efficiency of different drug-lipid ratios.

Table S1 Cytotoxicity IC₅₀ values of different naked drugs, drug-loaded liposomes,
nanoparticles

µg/mL	Eda/Kae	Eda/Kae@Lip	Eda/Kae@Lip-RGD
IC ₅₀ (Eda)	12.89	11.83	10.48
IC ₅₀ (Kae)	14.9	14.24	12.9