

Support Information

Solution-Processable Fe-Doped SnSe₂ Flakes with Tunable Morphology and Robust Near-Room-Temperature Ferromagnetism

Diqin Xiao,^a Xia Chen,^a Ya Nie,^a Xi Zhang,^{a,*} Gang Xiang^{a,*}

^a College of Physics, Sichuan University, Chengdu 610064, China

*Corresponding authors' emails: xizhang@scu.edu.cn; gxiang@scu.edu.cn

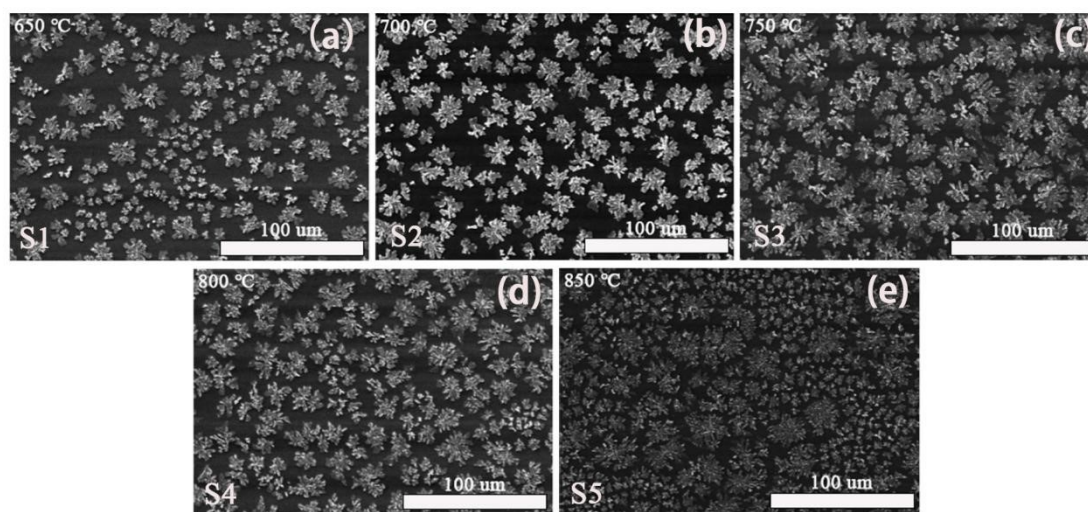


Figure 1. SEM images of undoped SnSe₂ samples. (a) S1 (650 °C), (b) S2 (700 °C), (c) S3 (750 °C), (d) S4 (800 °C) and (e) S5 (850 °C).