

Supporting Information

Multiscale Porous Carbonate Apatite Honeycomb Granules Derived from a Metastable Calcium Carbonate Precursor for Enhanced Bone Formation

Koichiro Hayashi,* Ryo Kishida, and Kunio Ishikawa

Department of Biomaterials, Faculty of Dental Science, Kyushu University

3-1-1 Maidashi, Higashi-ku, Fukuoka 812-8582, Japan

Phone: +81-82-642-6345

E-mail: khayashi@dent.kyushu-u.ac.jp

*Corresponding author

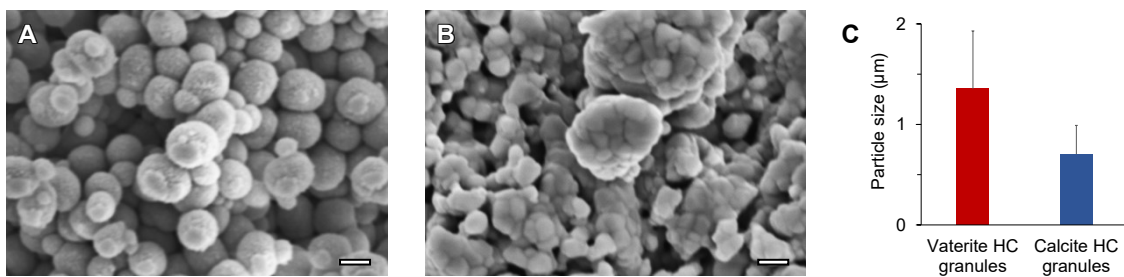


Figure S1. SEM images of (A) vaterite and (B) calcite honeycomb (HC) granules. Scale bars indicate 1 μm . (C) Particle sizes of the vaterite and calcite granules. Data are shown as the mean \pm standard deviation.