

## Supporting Information

### Separation of Sulfated Fucose-containing Isomers Found in Polysaccharides from Brown Seaweed using Cyclic Ion Mobility Mass Spectrometry

Olivia M. Wyper<sup>1</sup>, Karl J. Jobst<sup>1\*</sup>, Francesca M. Kerton<sup>1,\*</sup>

1. Memorial University of Newfoundland, St. John's, Canada

*Table S1: Structures of sulfated fucose residues of interest with typical m/z values*

Compound	Chemical Formula	Structure	m/z (Exact Mass)
[FucSO <sub>3</sub> -H <sub>2</sub> O] <sup>-</sup>	C <sub>6</sub> H <sub>9</sub> O <sub>7</sub> S <sup>-</sup>		225.0074
[Fuc <sub>3</sub> (SO <sub>3</sub> ) <sub>2</sub> -H <sub>2</sub> O] <sup>2-</sup>	C <sub>18</sub> H <sub>28</sub> O <sub>18</sub> S <sub>2</sub> <sup>2-</sup>		298.0364 (z = -2)
[Gal] <sup>-</sup>	C <sub>12</sub> H <sub>21</sub> O <sub>12</sub> <sup>-</sup>		357.1038
[FucSO <sub>3</sub> ] <sup>-</sup>	C <sub>6</sub> H <sub>11</sub> O <sub>8</sub> S <sup>-</sup>		243.0180
[Gal <sub>2</sub> SO <sub>3</sub> ] <sup>-</sup>	C <sub>12</sub> H <sub>21</sub> O <sub>14</sub> S <sup>-</sup>		421.0657

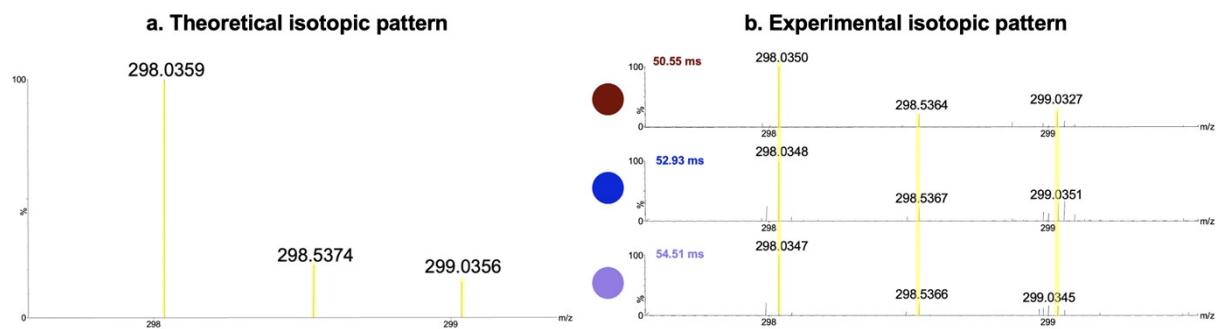


Figure S1: a. Theoretical isotopic pattern for  $[Fuc_3(SO_3)_2-H_2O]^{2-}$  b. Experimental isotopic pattern for isomers at 50.55, 52.93, and 54.51 ms for  $[Fuc_3(SO_3)_2-H_2O]^{2-}$