

Supporting Information

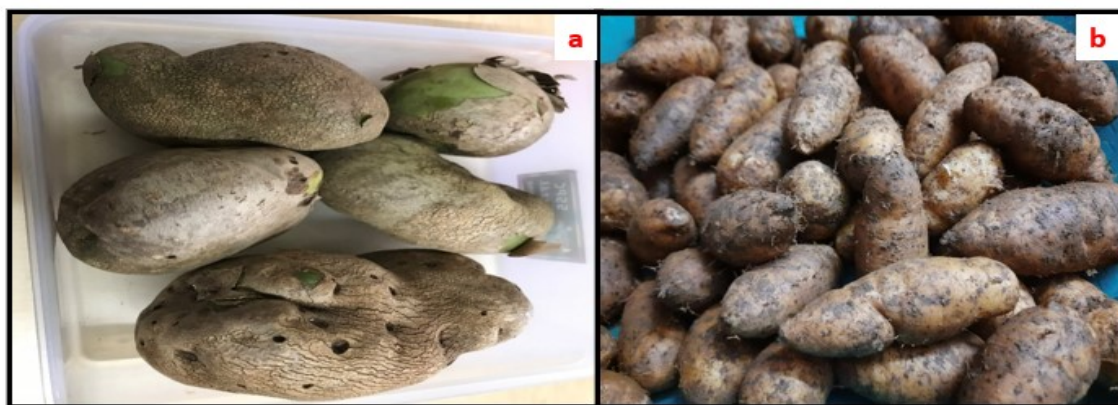


Figure 1. Photographs of (a) Raw *Dioscorea bulbifera*, and (b) Raw *Dioscorea esculenta*

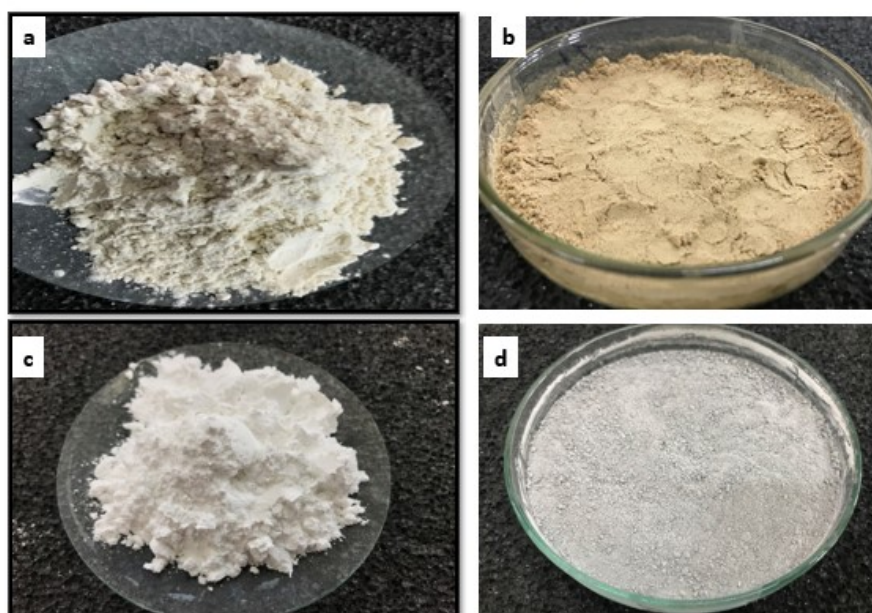


Figure 2. Photographs of Raw *Dioscorea bulbifera* starch (a), Ball milled *Dioscorea bulbifera* starch (b), Raw *Dioscorea esculenta* starch (c), and Ball milled *Dioscorea esculenta* starch (d).

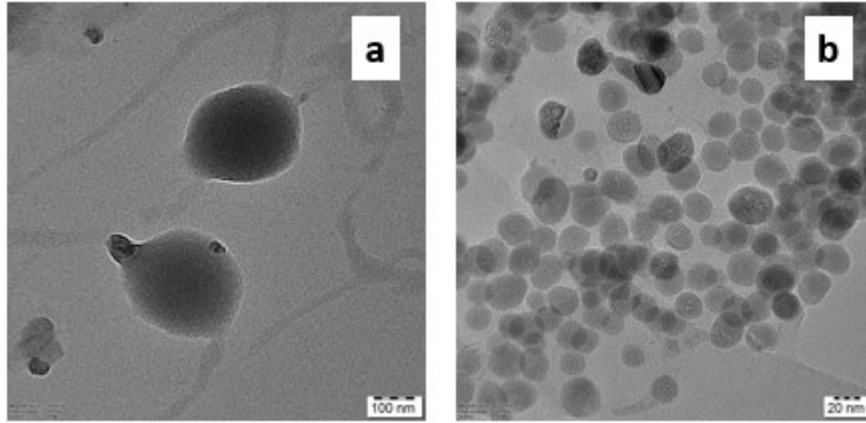


Figure 3. Optimization of Ball Milling of *Dioscorea bulbifera* starch (a) starch: ball weight ratio 1:10, 300 rpm, 2 hours, and (b) starch: ball weight ratio 1:10, 300 rpm, 3 hours.

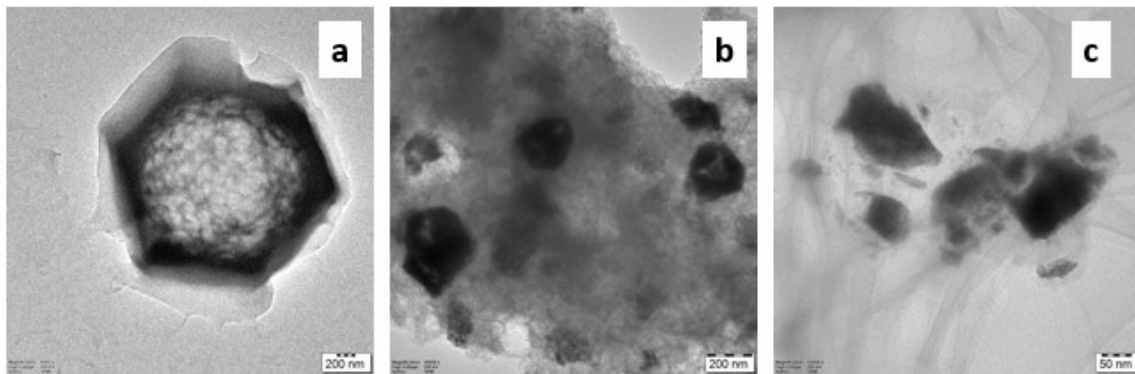


Figure 4. Optimization of Ball Milling of *Dioscorea esculenta* starch (a) starch: ball weight ratio 1:10, 300 rpm, 2 hours, (b) starch: ball weight ratio 1:10, 300 rpm, 3 hours, (c) starch: ball weight ratio 1:12, 300 rpm, 3 hours.

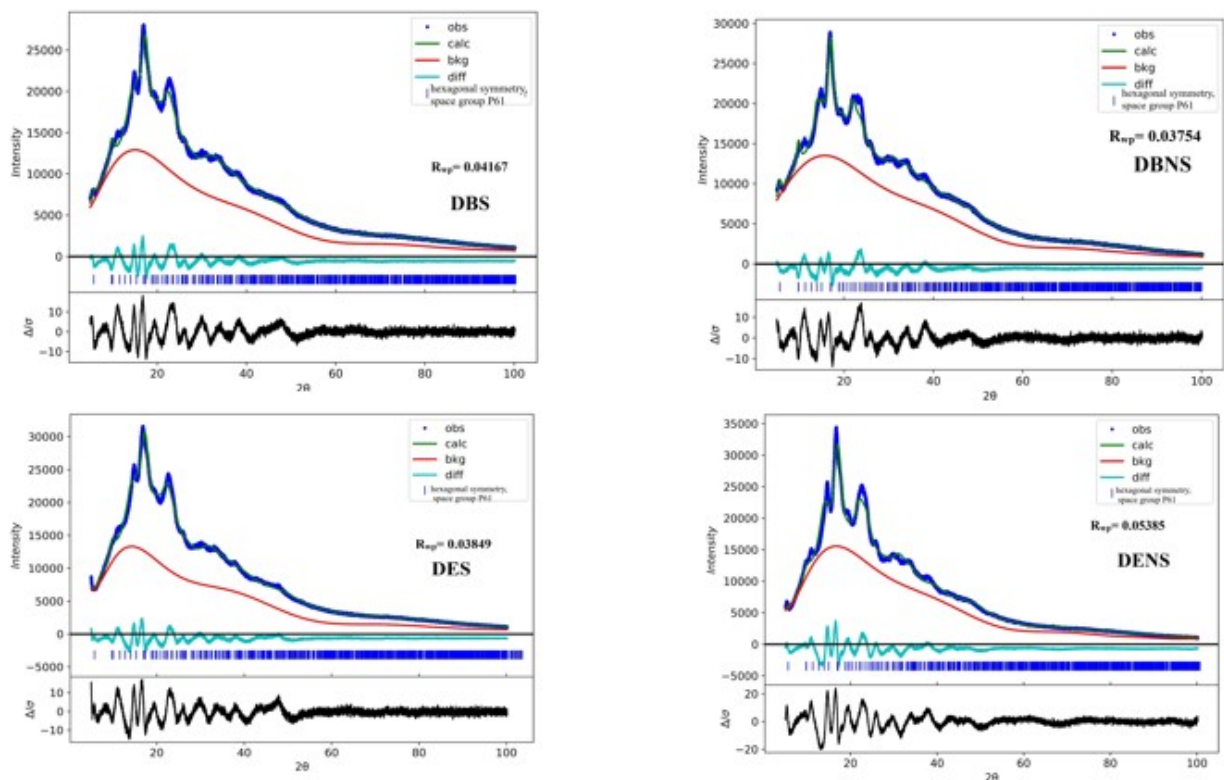


Figure 5. Results of Reitveld refinement generated for raw and ball-milled DBS and DES by GSAS II software. In the figure, obs represents the observed value, calc represents the calculated value, bkg represents the background, diff represents the difference between the observed and calculated value, and R_{wp} represents the weighted profile R factor.

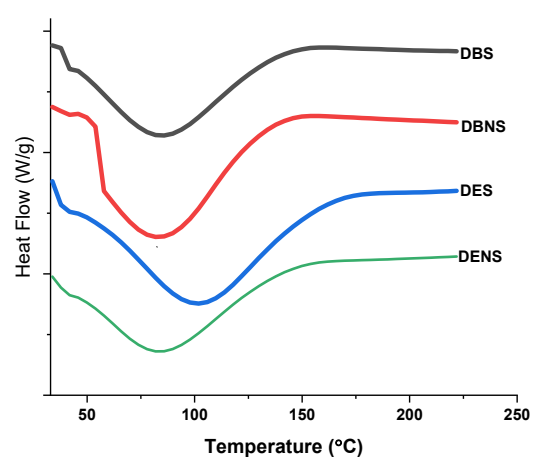


Figure 6. DSC Thermogram of raw and ball-milled DBS and DES.

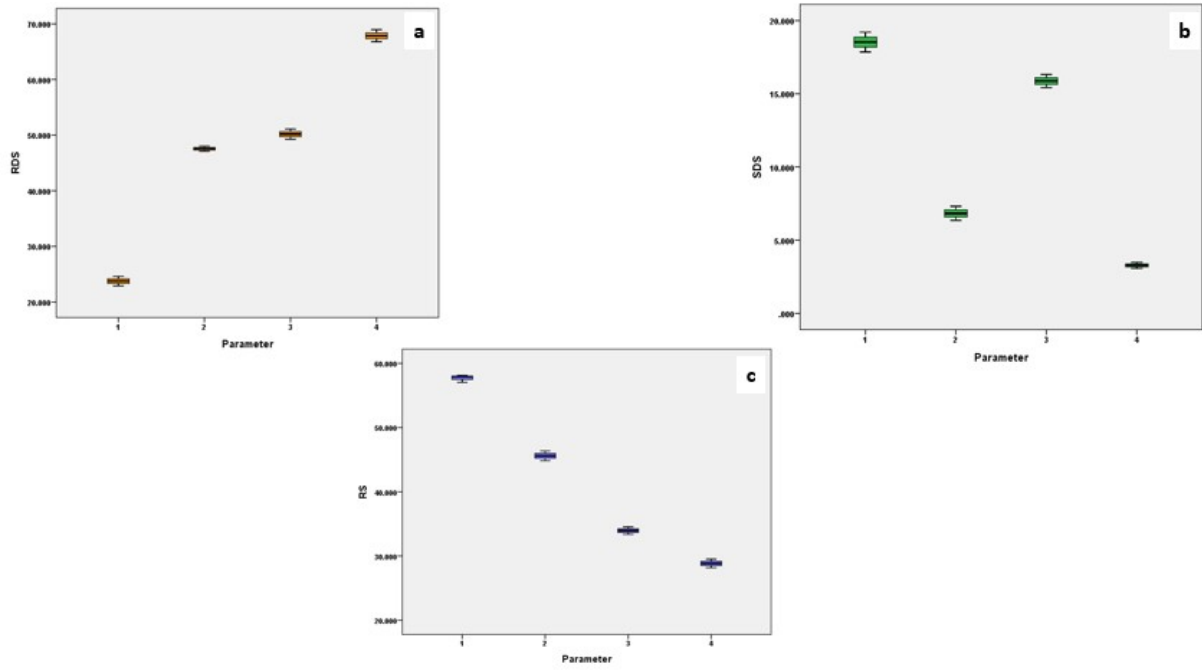


Figure 7. SPSS Box plot of Rapidly Digestible Starch (RDS), Slowly Digestible Starch (SDS), and Resistant Starch (RS). In this figure, parameters 1, 2, 3, and 4 represent DBS, DBNS, DES, and DENS, respectively.