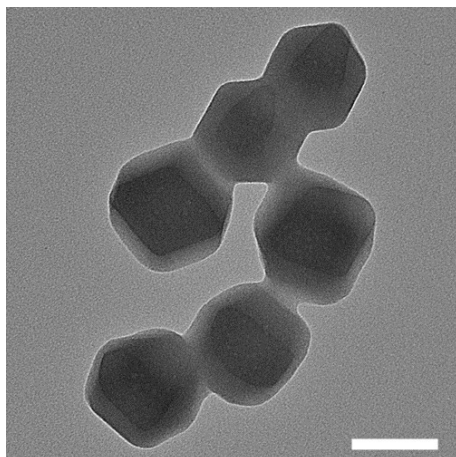
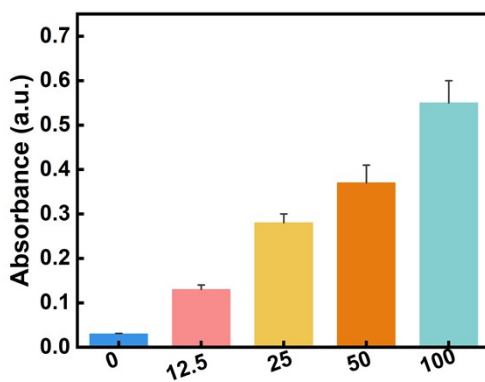


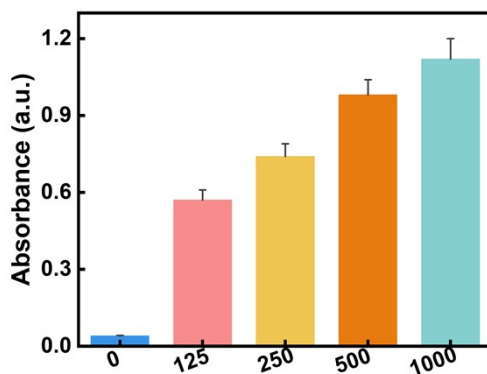
1 Supplementary Figure



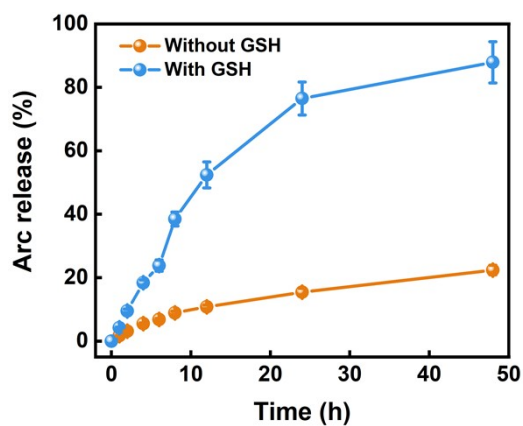
Supplementary Figure S1. TEM image of the ZIF-8. Scale bar: 100 nm.



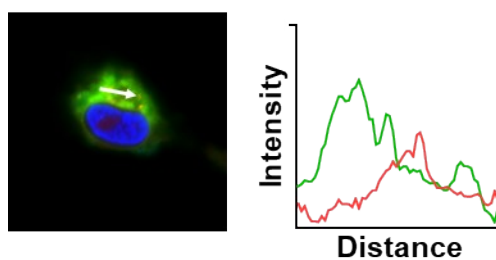
Supplementary Figure S2. UV-Vis spectra of different concentrations of Fe@Arc treated with TMB plus H₂O₂.



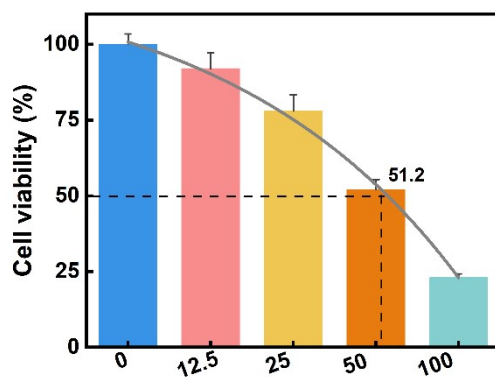
Supplementary Figure S3. UV-Vis spectra of different concentrations of H₂O₂ treated with TMB plus Fe@Arc.



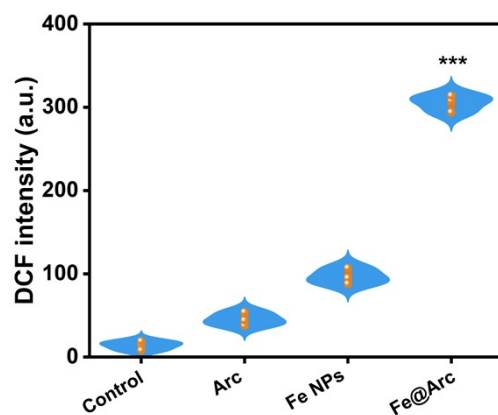
Supplementary Figure S4. The Arc release curves in the presence of GSH.



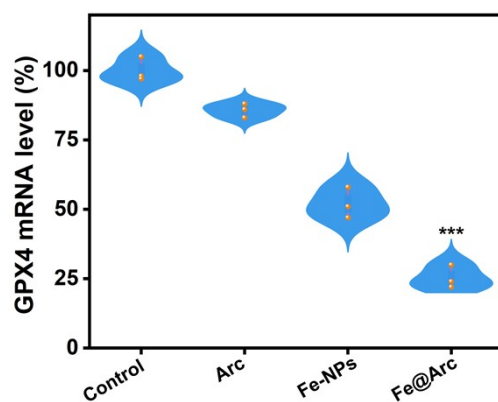
Supplementary Figure S5. Lysosomal colocalization analysis of A549 cells.



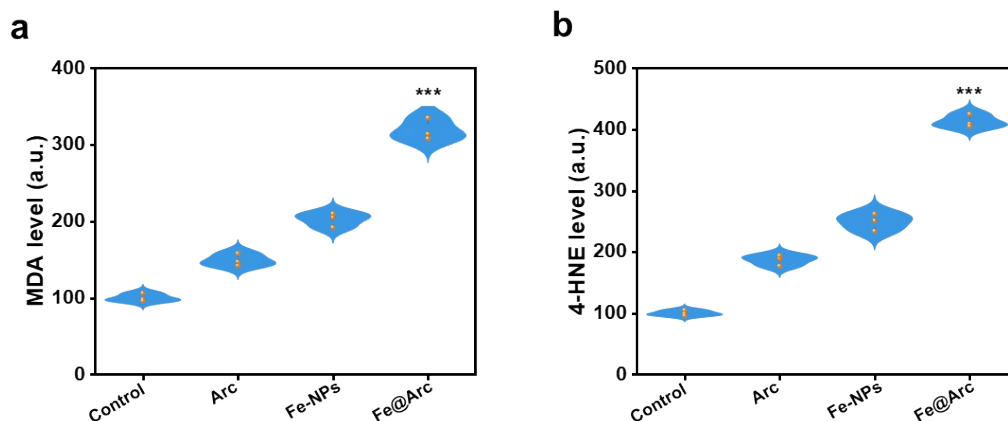
Supplementary Figure S6. The cell viability and IC₅₀ of Arctigenin.



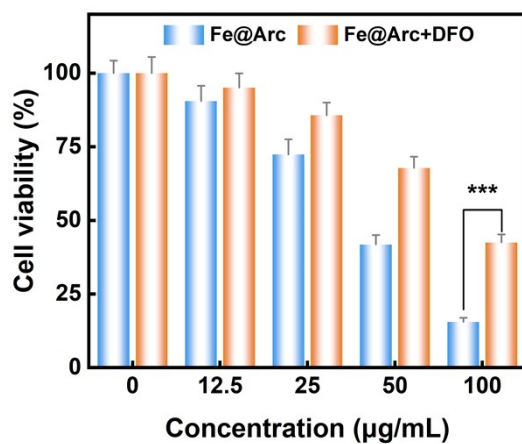
Supplementary Figure S7. Quantitative analysis of cell death rate based on confocal image's results.



Supplementary Figure S8. The GPX4 mRNA level of cancer cells following varying treatments.



Supplementary Figure S9. (a) MDA and (b) 4-HNE levels in tumor cells following various treatments.



Supplementary Figure S10. The cell viability of Fe@Arc in the presence of DFO. The data are presented as mean \pm SEM (n=5). (***) $p < 0.001$