

Supplementary Information

A Novel Strategy for Photothermal Treatment and Electroencephalogram Monitoring of in Situ Glioma

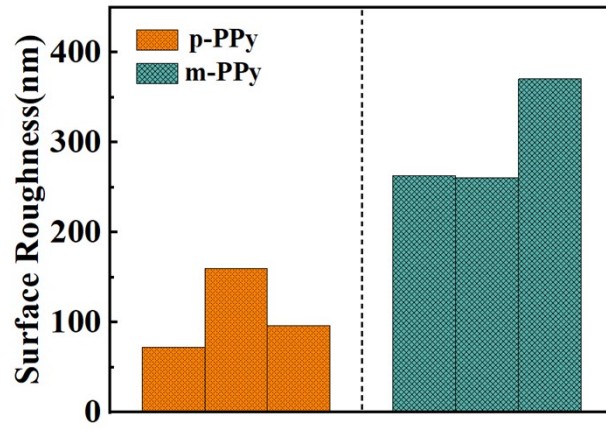


Figure S1 AFM topographic comparison between p-PPy and m-PPy.

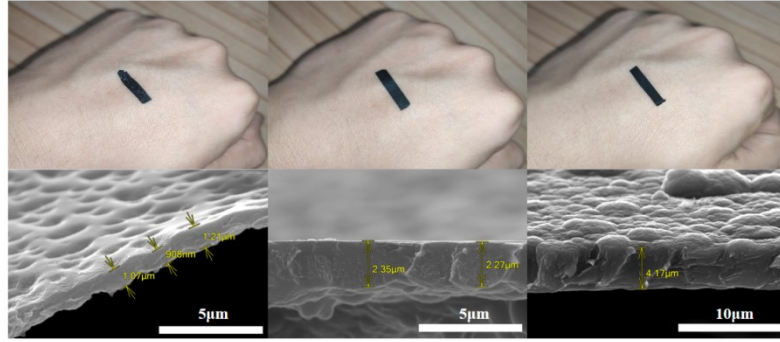


Figure S2 Thickness-dependent flexibility demonstration under bending deformation.

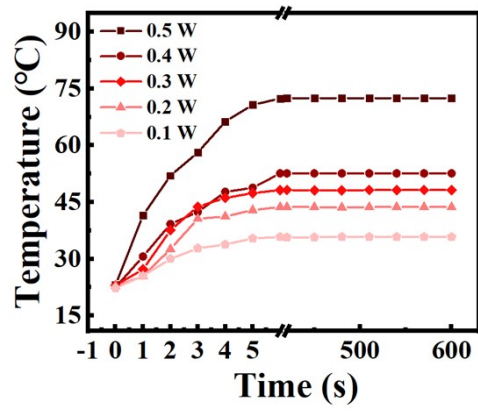


Figure S3 Power-dependent temperature modulation curves.

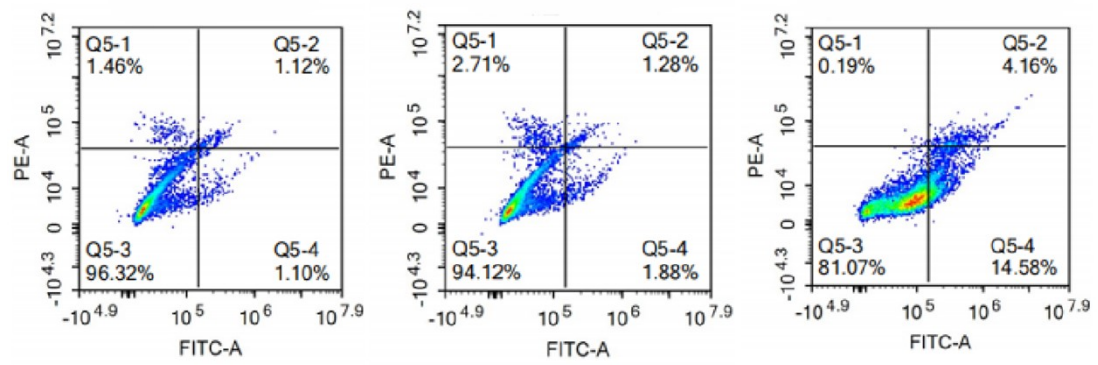


Figure S4 Flow cytometric analysis of cell after different treatments.

Figure S5 Western blot and densitometric quantification of Annexin V/CSRP3/septin-4 expression.

Figure S6 qPCR- WB plot of Annexin V/CSRP3/septin-4 expression.

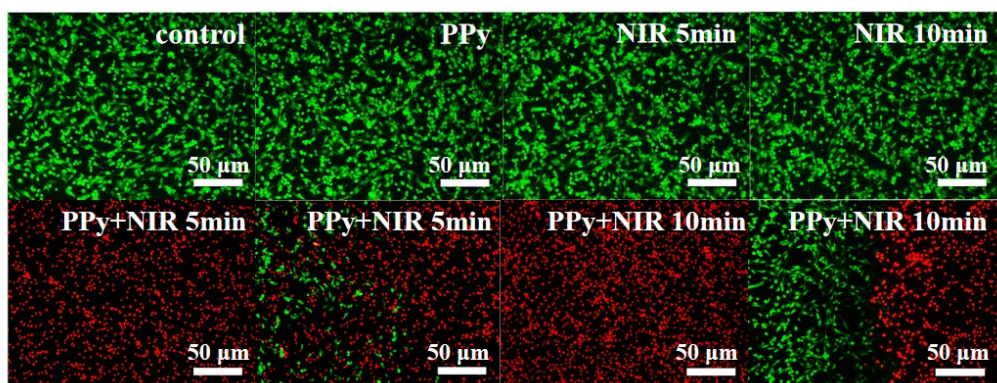


Figure S7 High-magnification of live/dead fluorescence images.

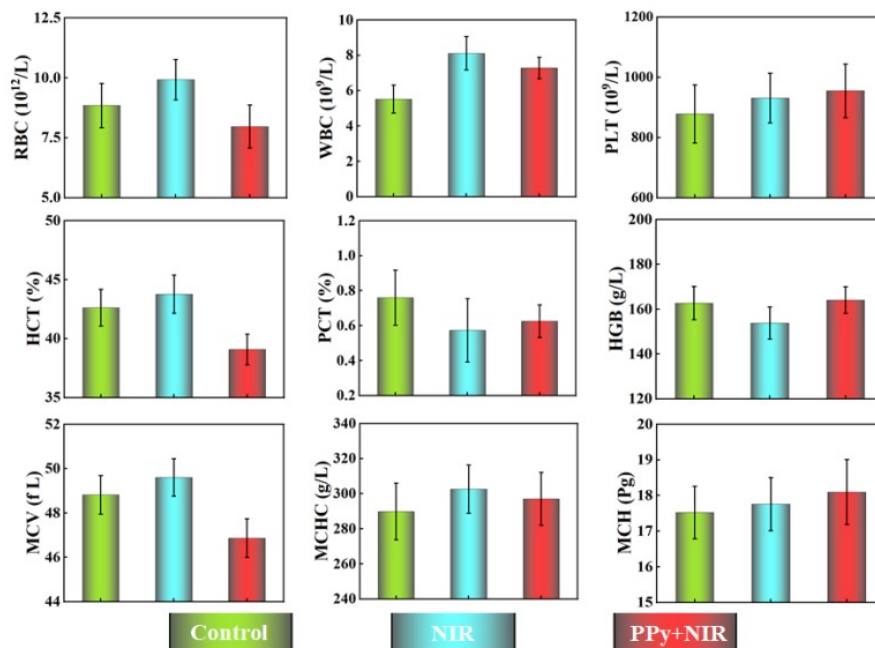


Figure S8 Hematological and biochemical safety profiling.

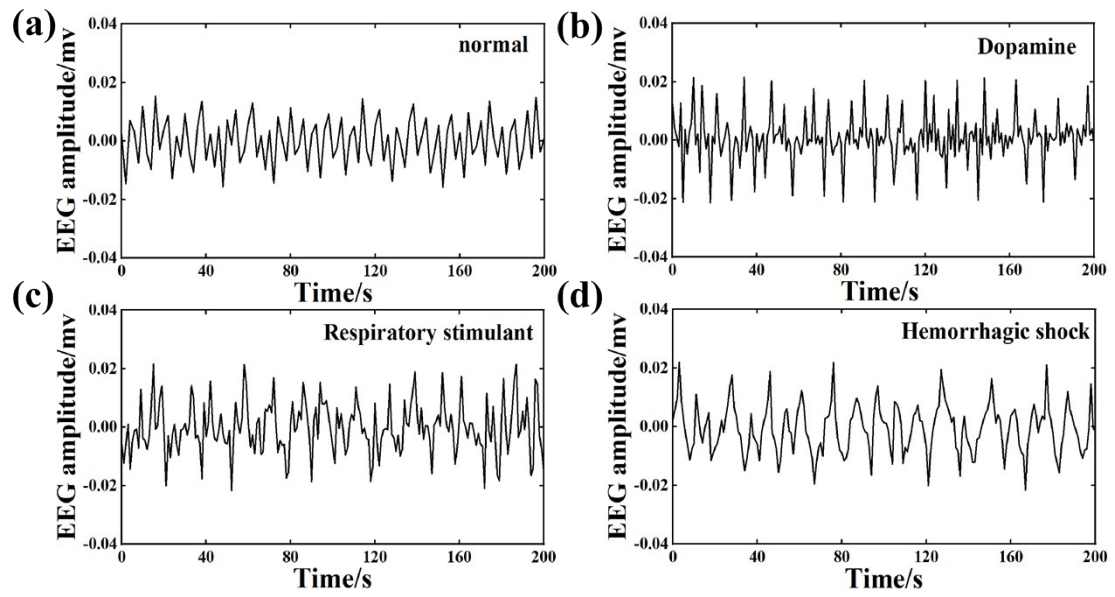


Figure S9 During the operation: EEG signal of (a) normal state; (b) dopamine (elevated blood pressure); (c) respiratory stimulant state; (d) hemorrhagic shock state.

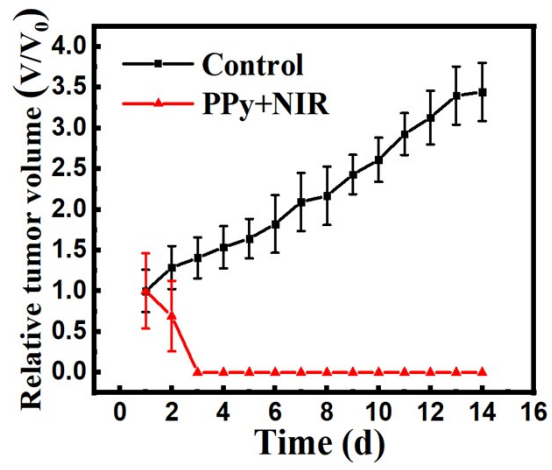


Figure S10 Tumor volume of mice.

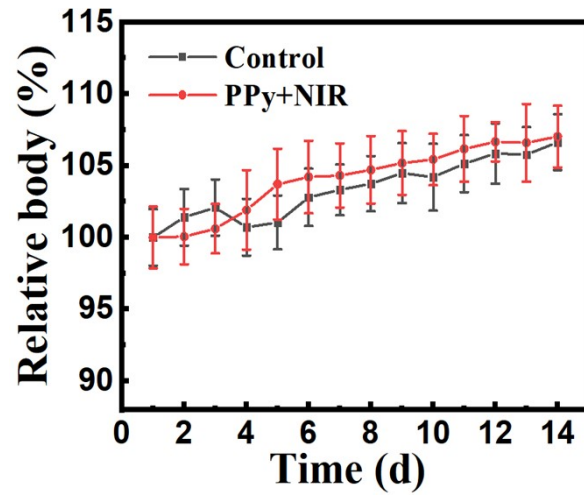


Figure S11 Body weight changes during 14-day observation.

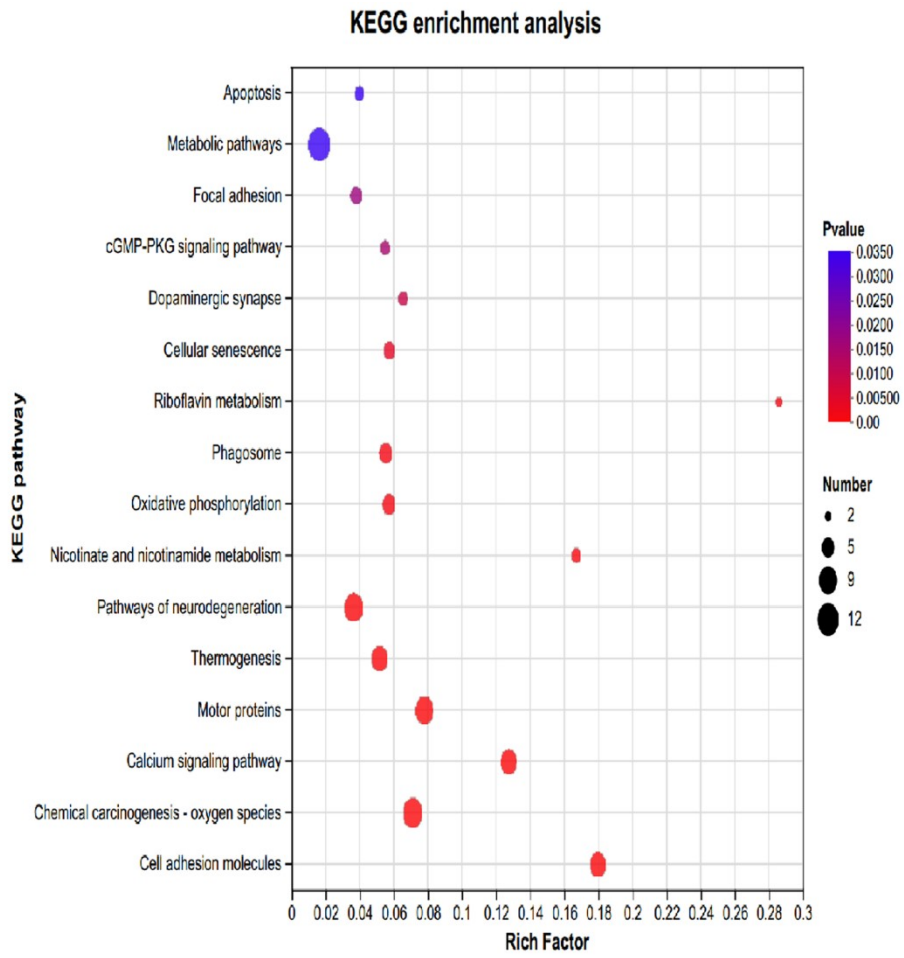


Figure S12 KEGG enrichment analysis of related differential proteins.

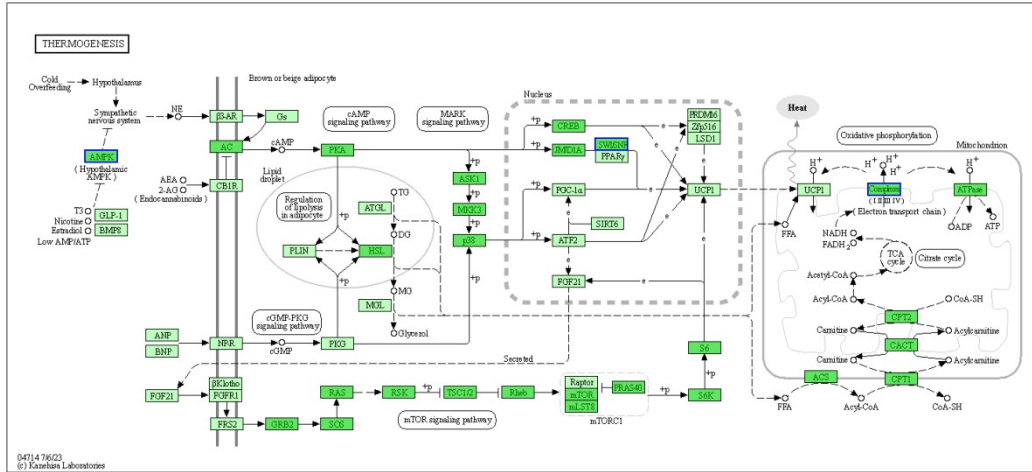


Figure S13 Proteomics KFGG enrichment analysis of thermogenesis pathway.

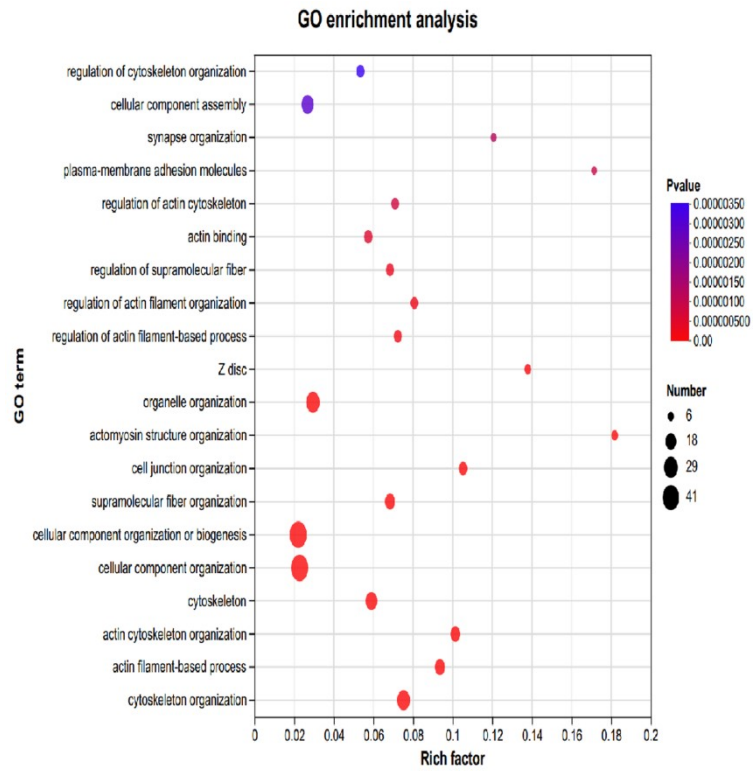


Figure 15 Differential protein GO enrichment analysis related to cell structure.

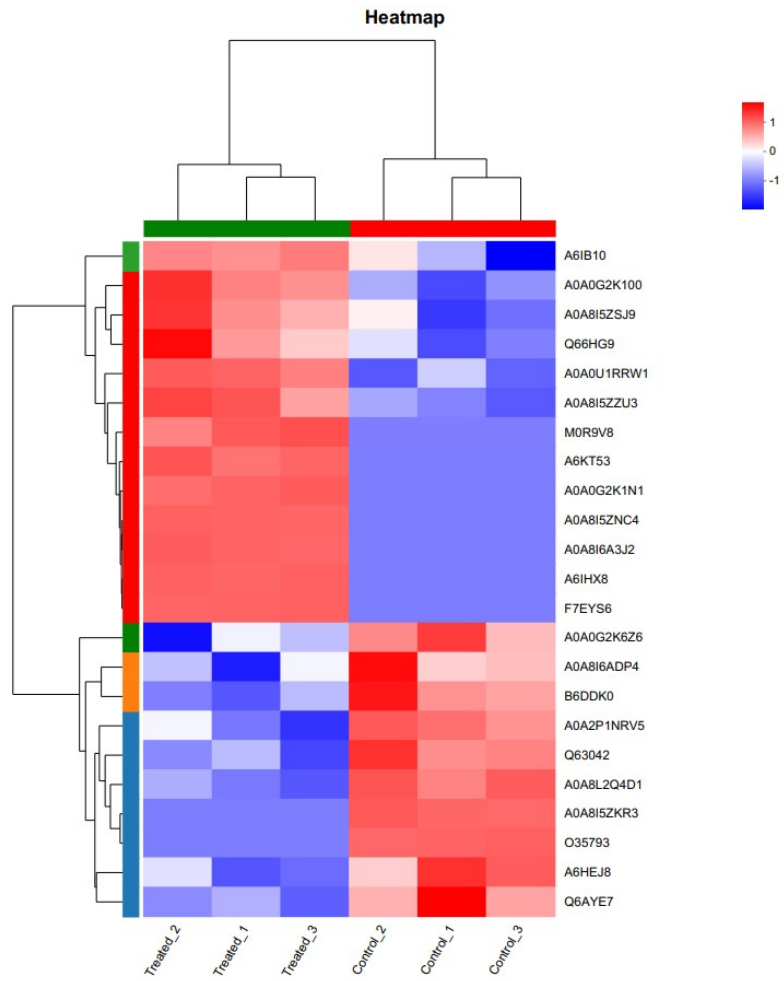


Figure S16 Heat maps of differential proteins associated with immunity.

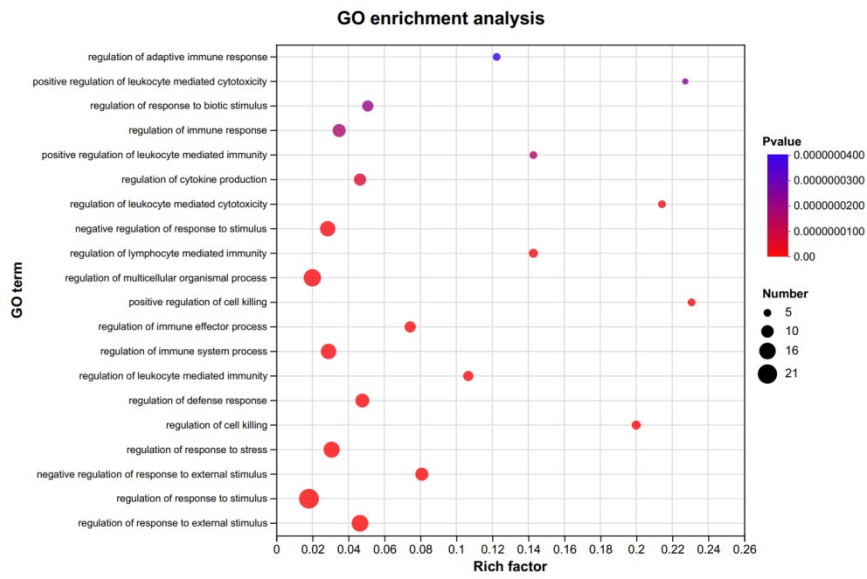


Figure S17 Differential protein GO enrichment analysis related to immunity.