

Compound 2

HEJ-ICCBS
1/17/2024 1:00:42 PM

File: ASF-I-7a

Date Run: 01-17-2024 (Time Run: 12:50:41)

Sample: ASIF / PROF.DR. FARZANA SHAHEEN

Instrument: JEOL JMS 600H-1

Inlet: Direct Probe

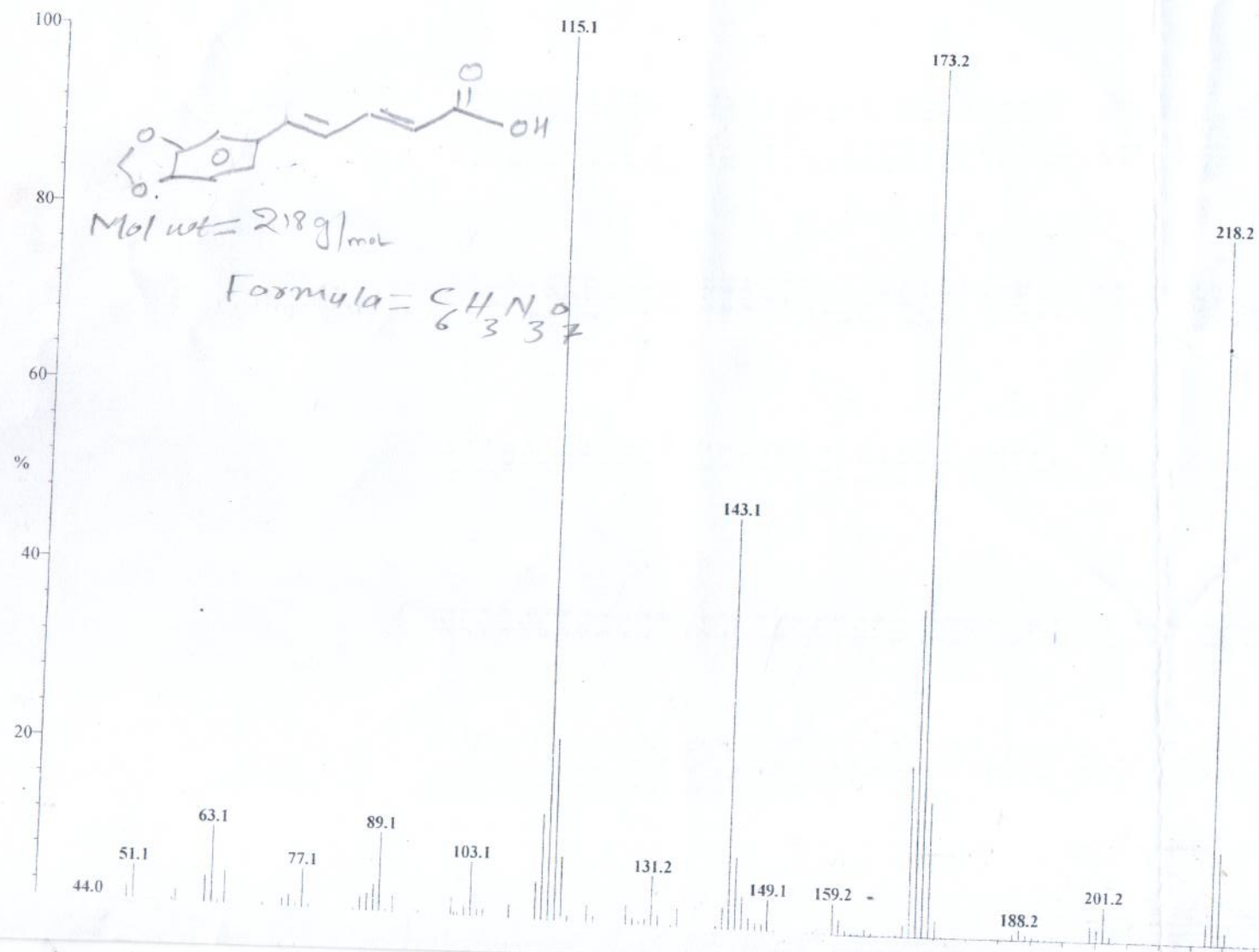
Ionization mode: EI+

Run By: MASS LAB 104

Scan: 10

Base: m/z 115; 99.9%FS TIC: 7034117

#Ions: 323



Compound 3

File: ASF-I-101a
Sample: ASIF/PROF.DR.FARZANA SHAHEEN
Instrument: JEOL JMS 600H-1
Inlet: Direct Probe

Date Run: 03-12-2024 (Time Run: 09:54:57)

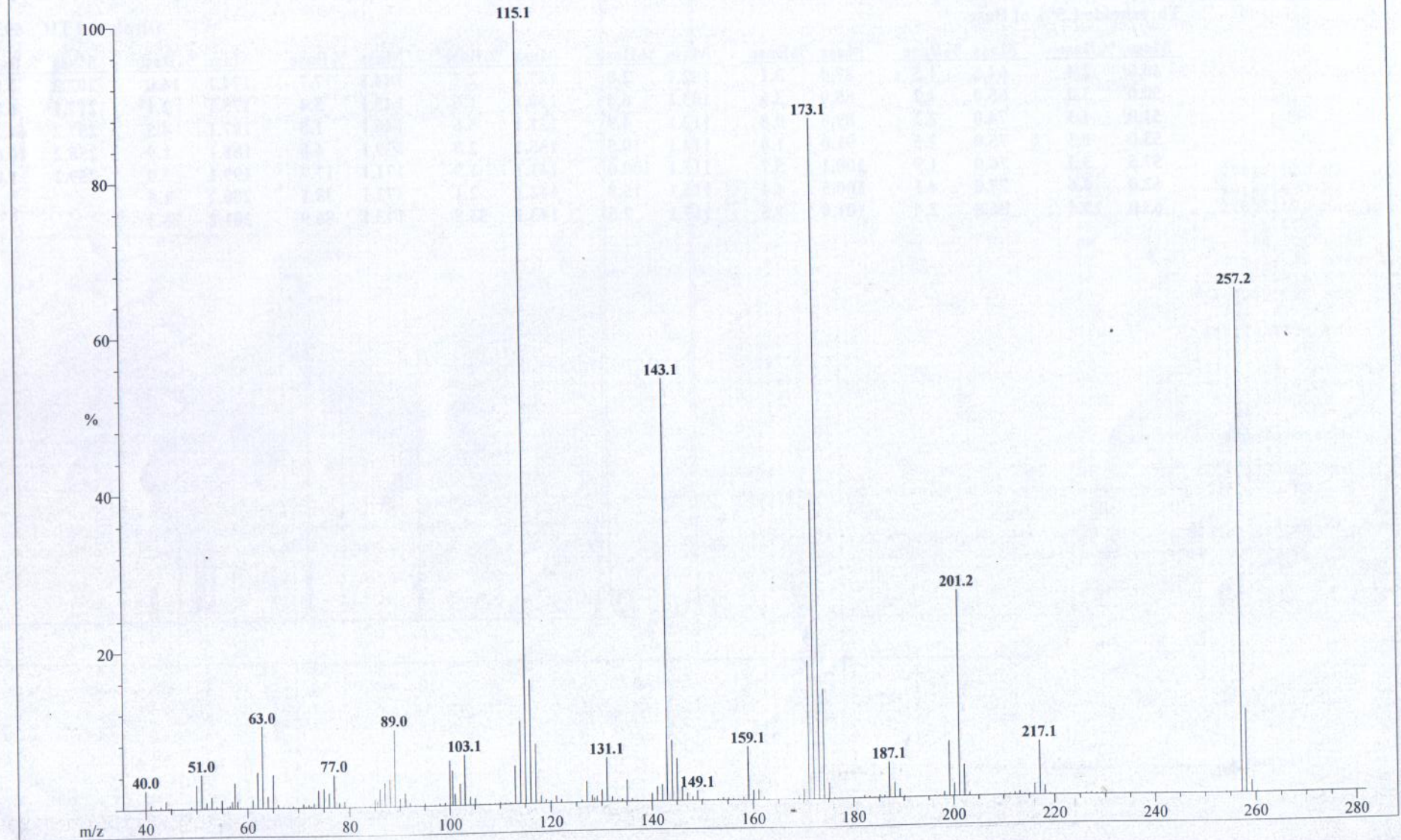
Run By: MASS LAB 104

Ionization mode: EI+

Scan: 7

#Ions: 351

Base: m/z 115; 99.9%FS TIC: 6932585



Compound 4

File: ASF-II-67a
Sample: ASIF /PROF. DR. FARZANA
Instrument: JEOL JMS 600H-1
Inlet: Direct Probe

Date Run: 07-11-2024 (Time Run: 14:22:20)

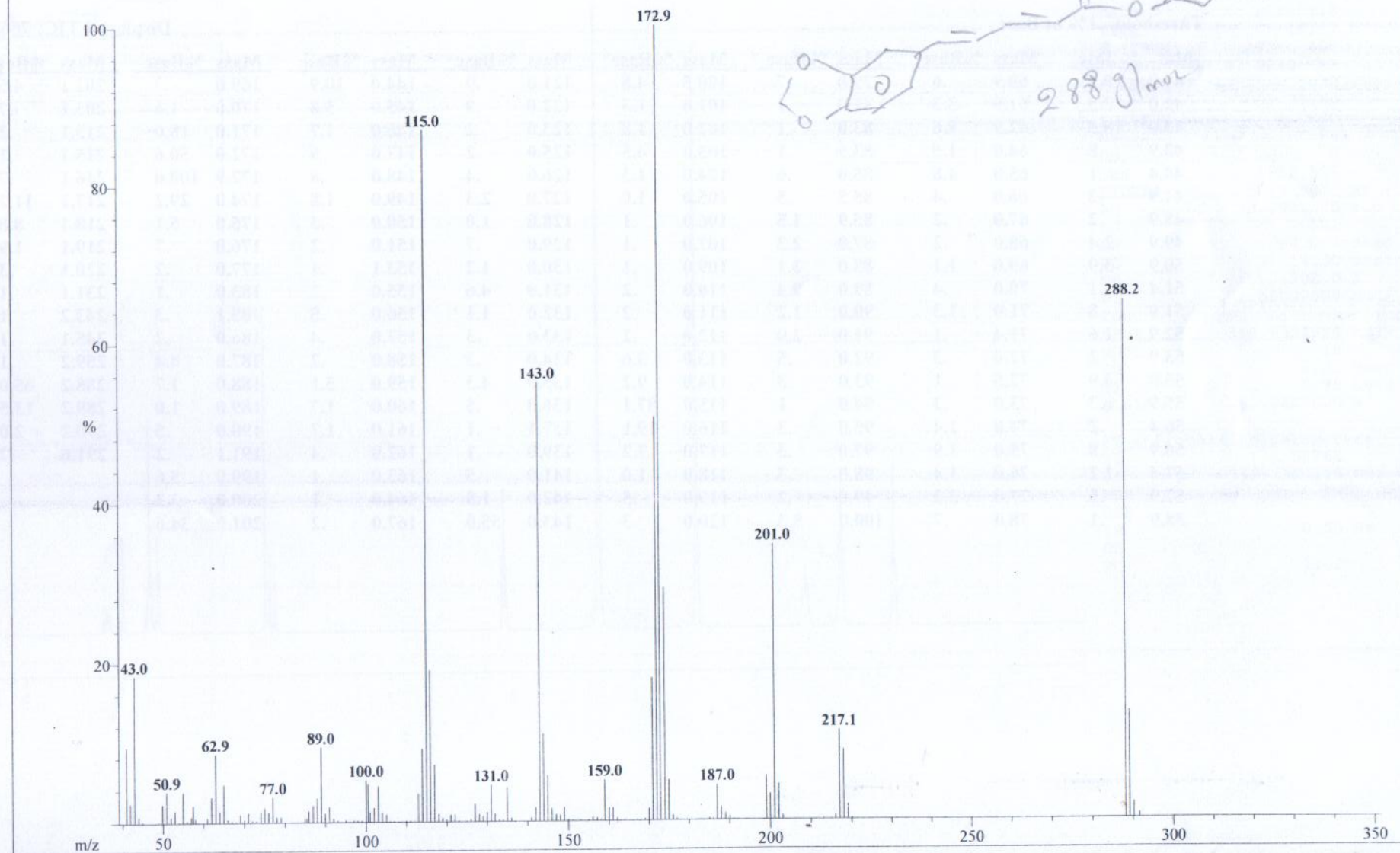
Run By: MASS LAB 104

Ionization mode: EI+

Scan: 14

Base: m/z 173; 99.9%FS TIC: 7668170

#Ions: 278



Compound 5

File: ASF-II-69a
Sample: ASIF /PROF. DR. FARZANA
Instrument: JEOL JMS 600H-1
Inlet: Direct Probe

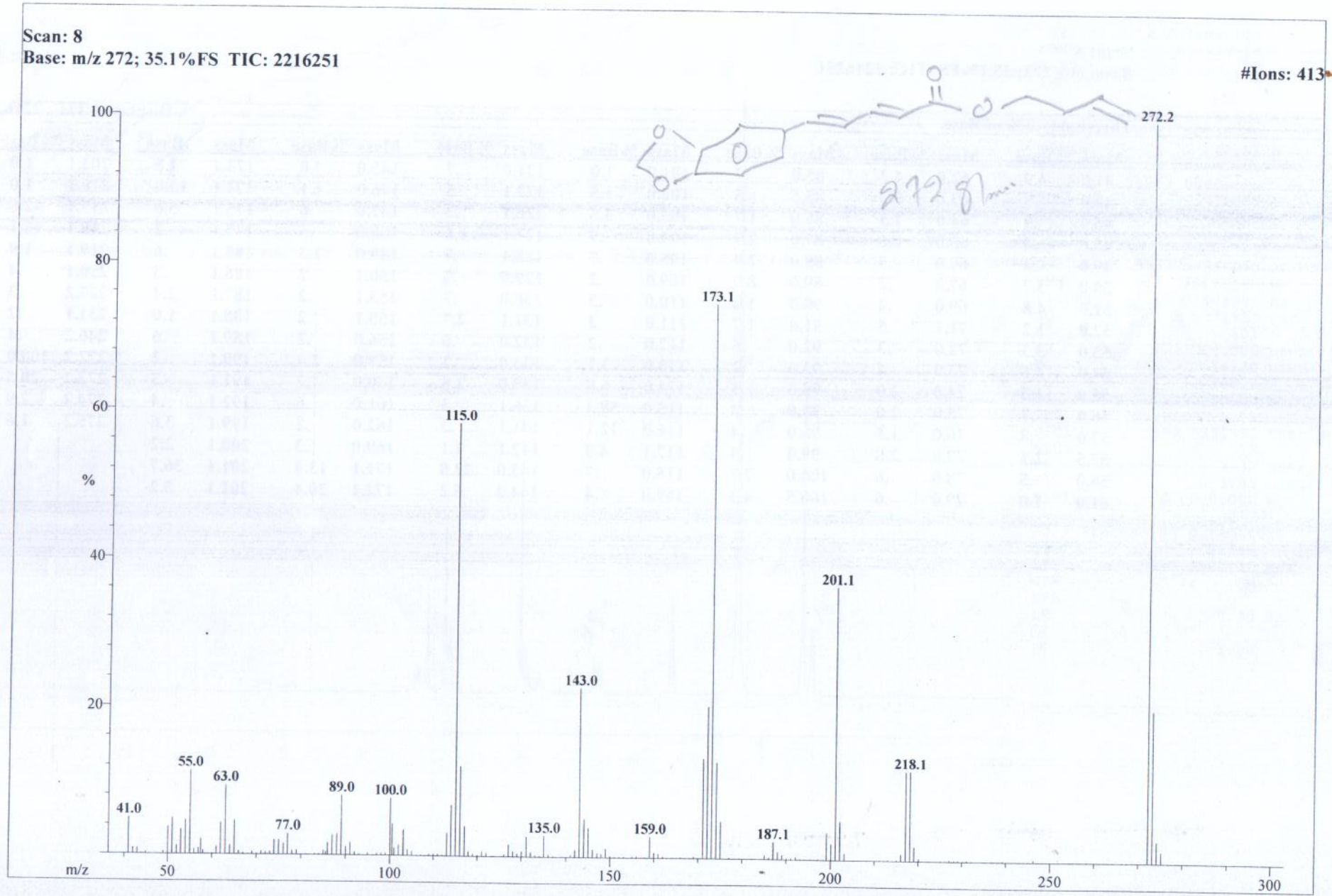
Date Run: 07-12-2024 (Time Run: 14:45:24)

Run By: MASS LAB 104

Ionization mode: EI+

Scan: 8
Base: m/z 272; 35.1%FS TIC: 2216251

#Ions: 413



Compound 6

HEJ-ICCBS
3/16/2024 10:32:23 AM

File: ASF-I-103a
Sample: ASIF /PROF. DR. FARZANA
Instrument: JEOL JMS 600H-1
Inlet: Direct Probe

Date Run: 03-16-2024 (Time Run: 10:21:38)

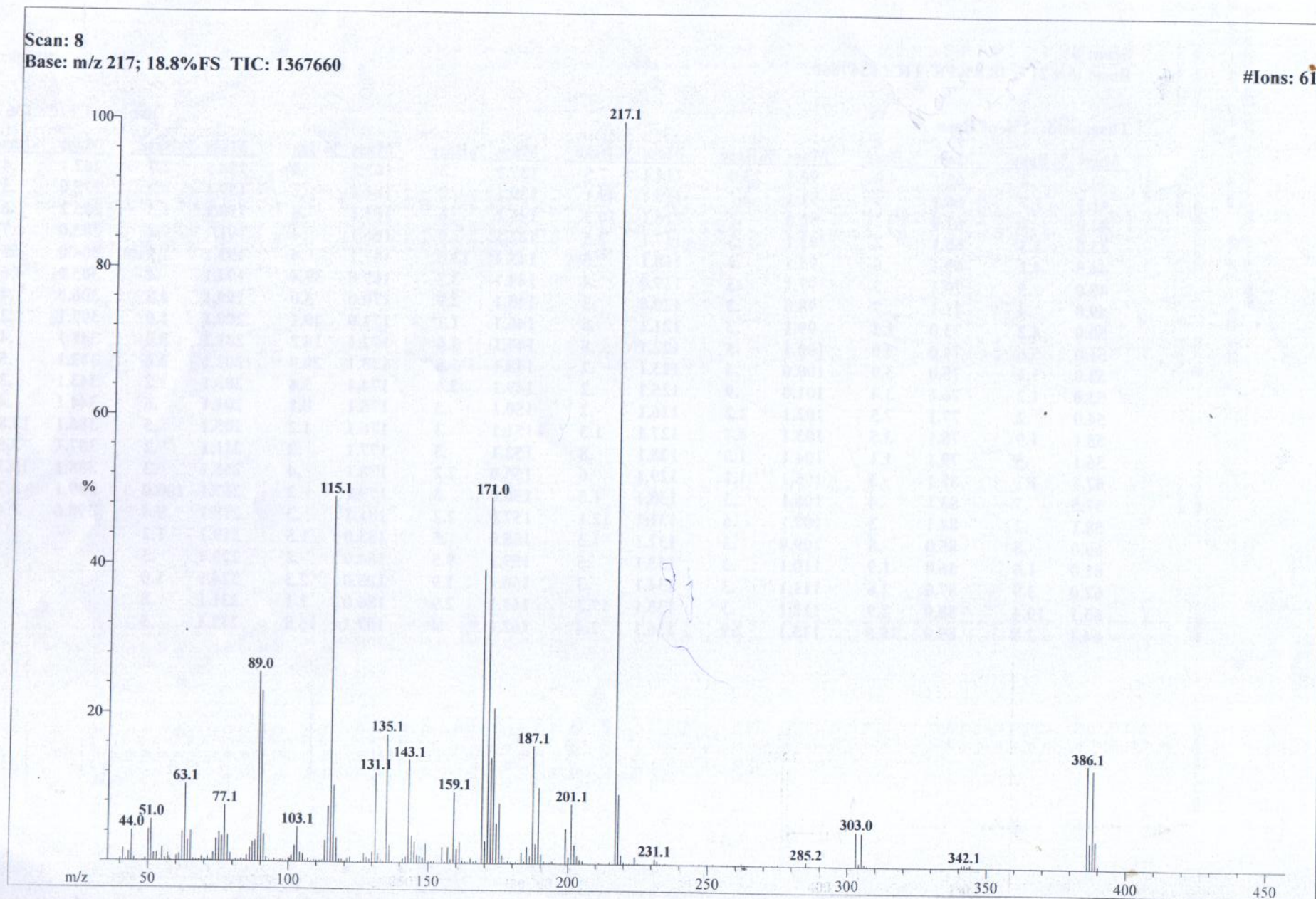
Run By: MASS LAB 104

Ionization mode: EI+

Scan: 8

Base: m/z 217; 18.8%FS TIC: 1367660

#Ions: 612



Compound 7

HEJ-ICCBS
7/9/2024 3:39:02 PM

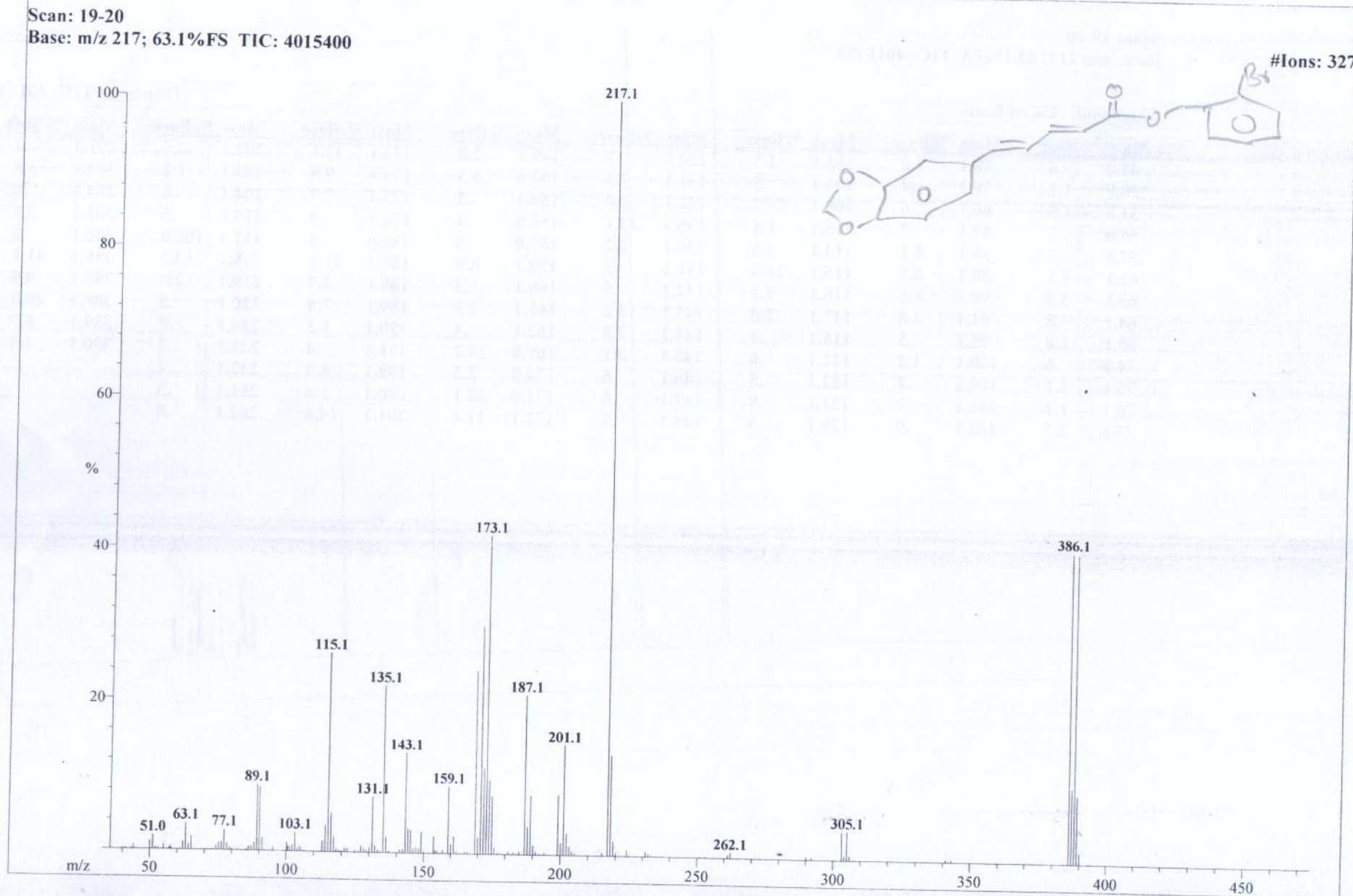
File: ASF-II-59a
Sample: ASIF /PROF. DR. FARZANA
Instrument: JEOL JMS 600H-1
Inlet: Direct Probe

Date Run: 07-09-2024 (Time Run: 15:31:08)

Ionization mode: EI+

Run By: MASS LAB 104

Scan: 19-20
Base: m/z 217; 63.1%FS TIC: 4015400



Compound 8

File: ASF-II-63a
Sample: ASIF /PROF. DR. FARZANA
Instrument: JEOL JMS 600H-1
Inlet: Direct Probe

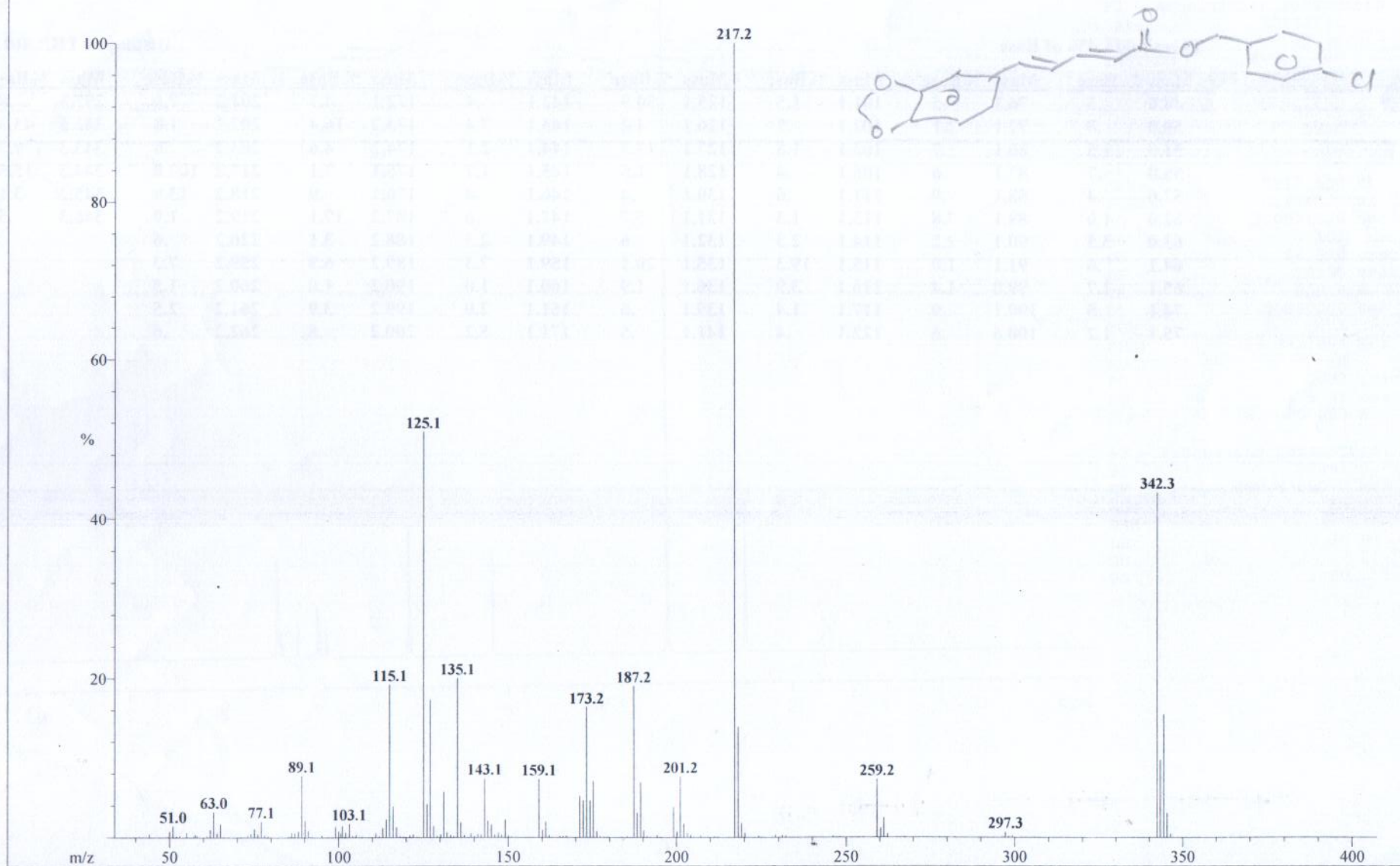
Date Run: 07-09-2024 (Time Run: 15:43:12)

Run By: MASS LAB 104

Ionization mode: EI+

Scan: 15-17
Base: m/z 217; 88.7%FS TIC: 4613587

#Ions: 304



Compound 9

File: ASF-II-53a

Date Run: 07-08-2024 (Time Run: 14:44:28)

Sample: ASIF /PROF. DR. FARZANA

Instrument: JEOL JMS 600H-1

Run By: MASS LAB 104

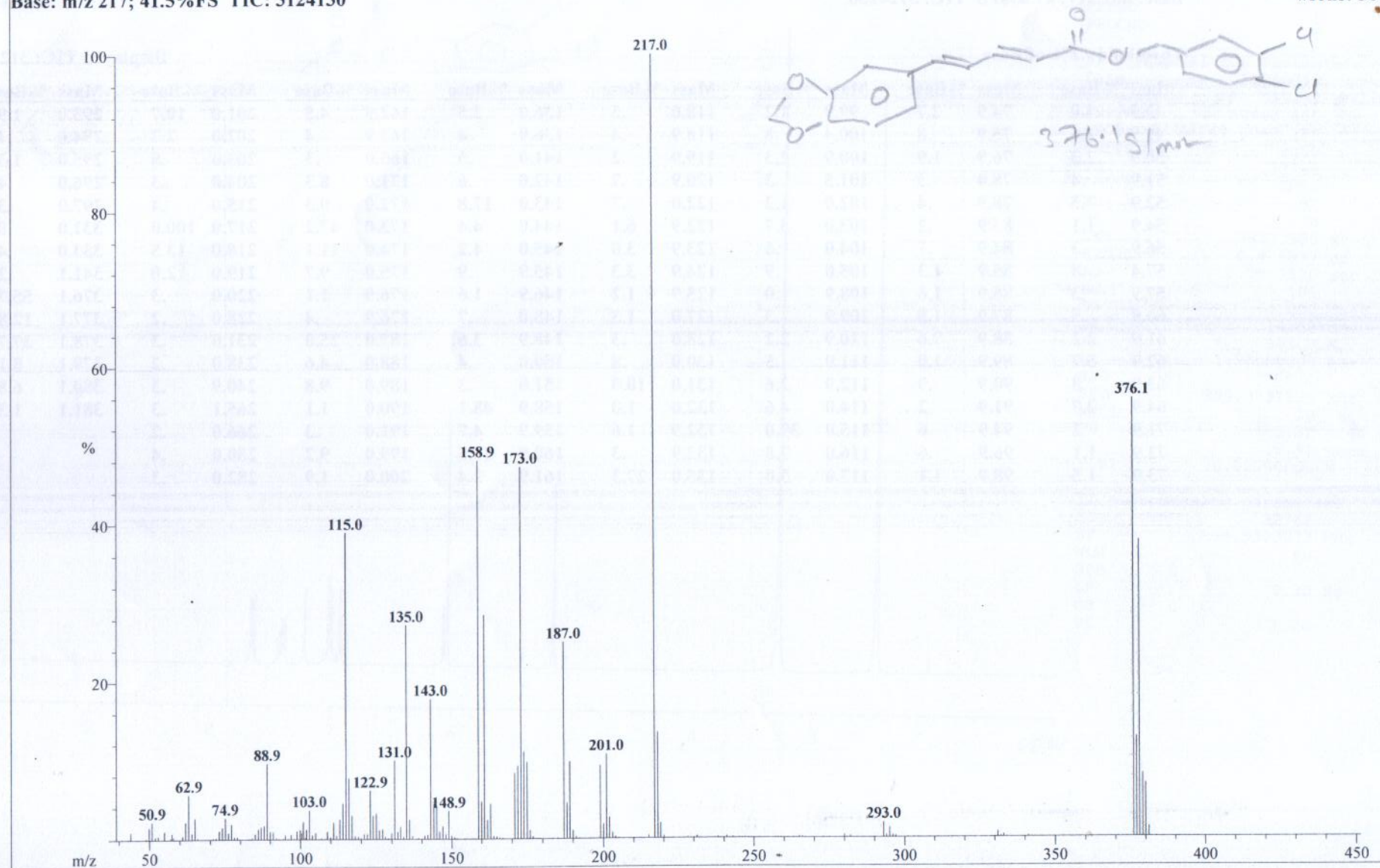
Inlet: Direct Probe

Ionization mode: EI+

Scan: 19

Base: m/z 217; 41.5%FS TIC: 3124130

#Ions: 366



Compound 10

HEJ-ICCBS
7/5/2024 4:33:06 PM

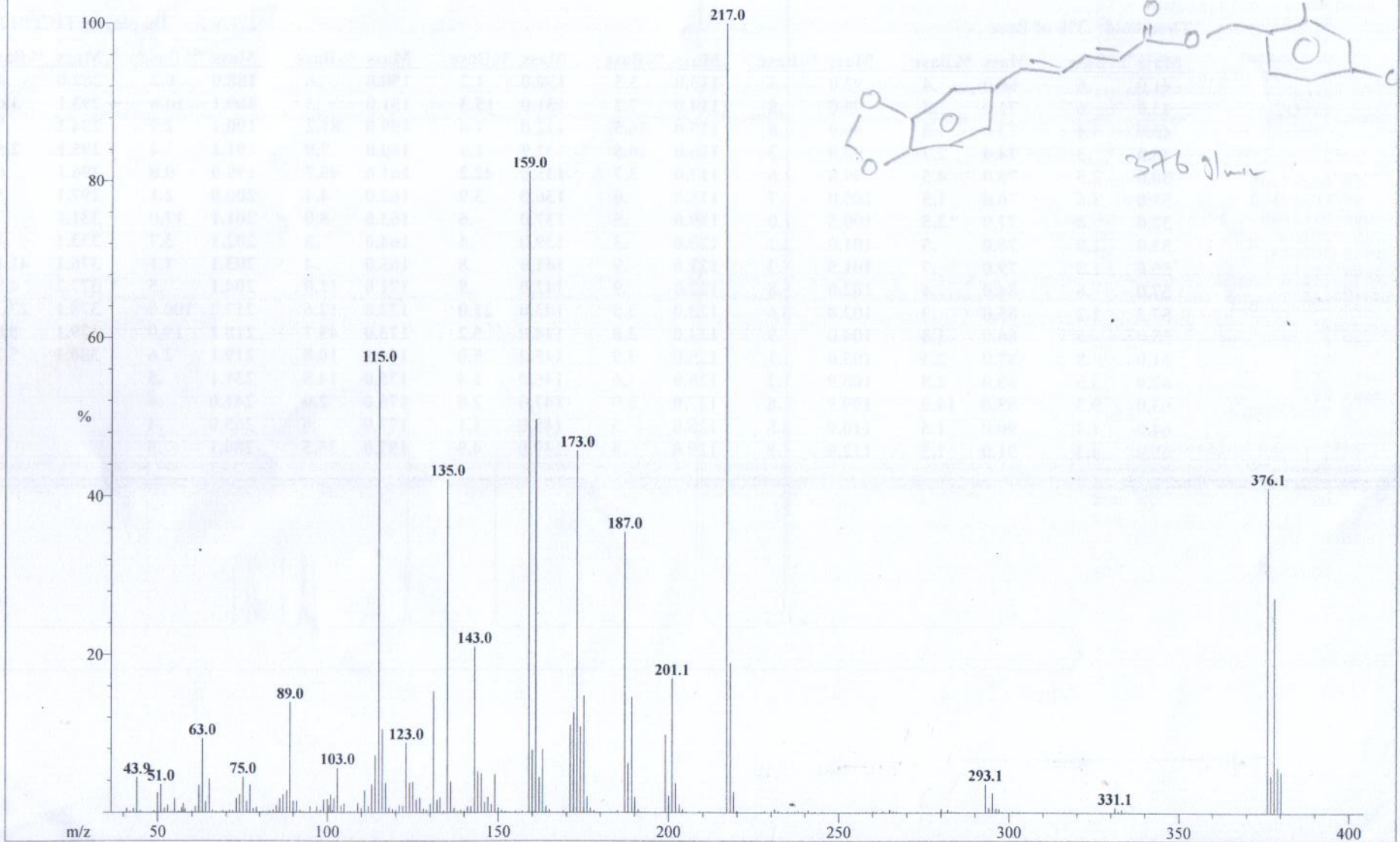
File: ASF-II-47a
Sample: ASIF /PROF. DR. FARZANA
Instrument: JEOL JMS 600H-1
Inlet: Direct Probe

Date Run: 07-05-2024 (Time Run: 16:26:38)

Run By: MASS LAB 104

Ionization mode: EI+

Scan: 30-32
Base: m/z 217; 97.1%FS TIC: 9128409



Compound 11

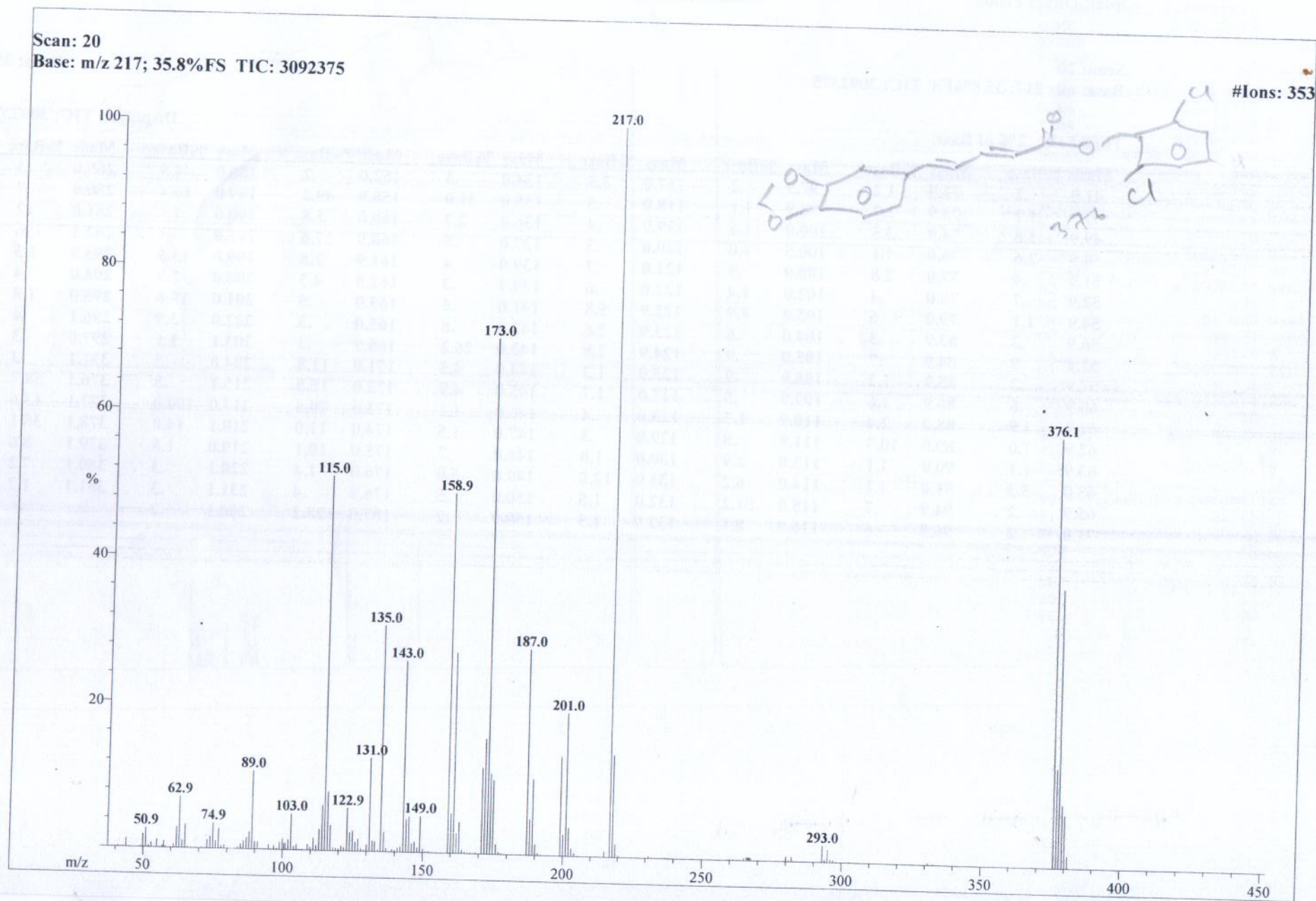
File: ASF-II-57a
Sample: ASIF /PROF. DR. FARZANA
Instrument: JEOL JMS 600H-1
Inlet: Direct Probe

Date Run: 07-08-2024 (Time Run: 14:54:04)

Ionization mode: EI+

Run By: MASS LAB 104

Scan: 20
Base: m/z 217; 35.8%FS TIC: 3092375



Compound 12

HEJ-ICCBS
4/17/2024 12:51:55 PM

File: ASF-I-111a
Sample: ASIF /PROF. DR. FARZANA
Instrument: JEOL JMS 600H-1
Inlet: Direct Probe

Date Run: 04-17-2024 (Time Run: 12:44:57)

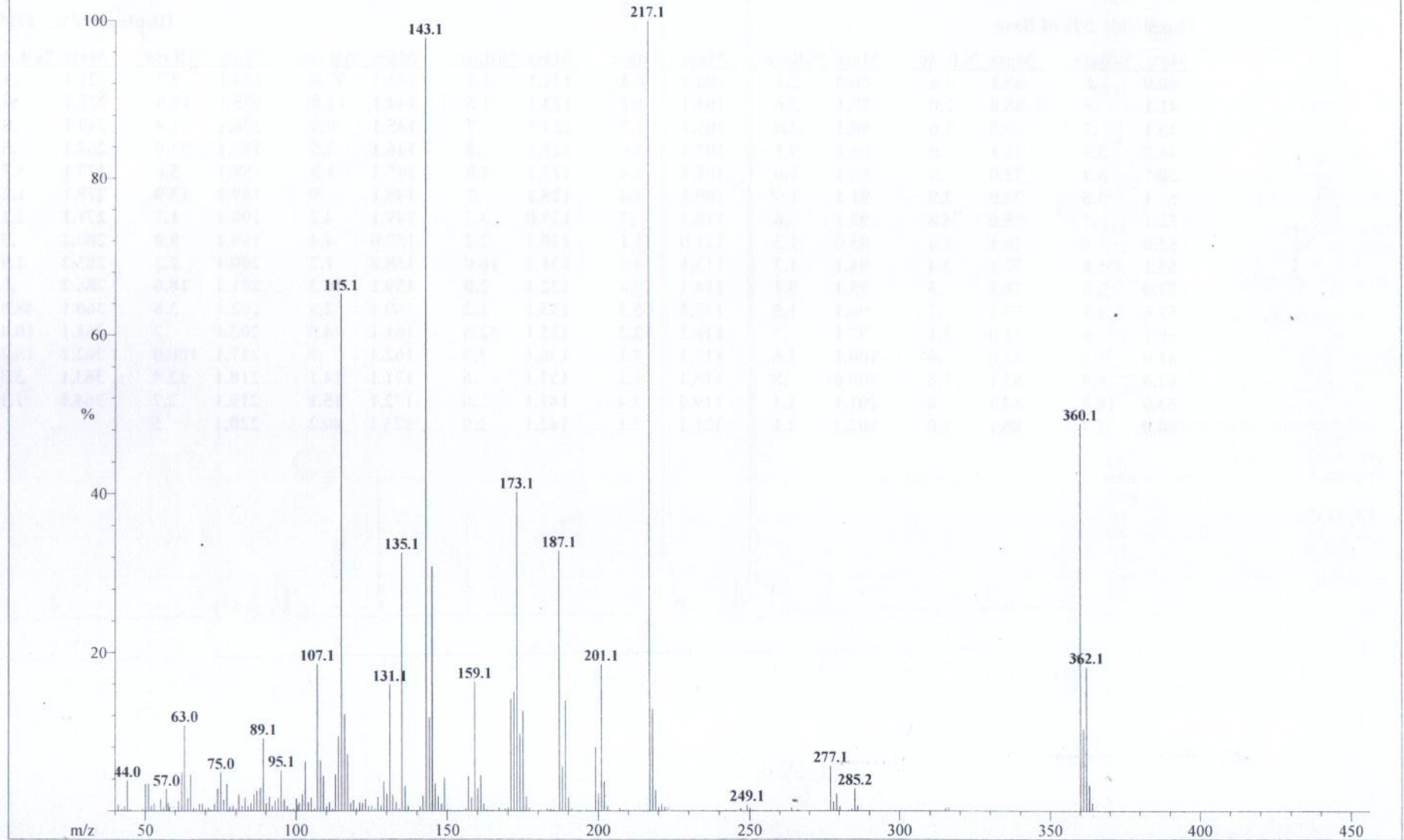
Run By: MASS LAB 104

Ionization mode: EI+

Scan: 11

Base: m/z 218; 17.9%FS TIC: 1709136

#Ions: 240



Compound 13

File: ASF-I-109a

Date Run: 03-20-2024 (Time Run: 11:50:08)

Sample: ASIF / PROF.DR. FARZANA SHAHEEN

Instrument: JEOL JMS 600H-1

Inlet: Direct Probe

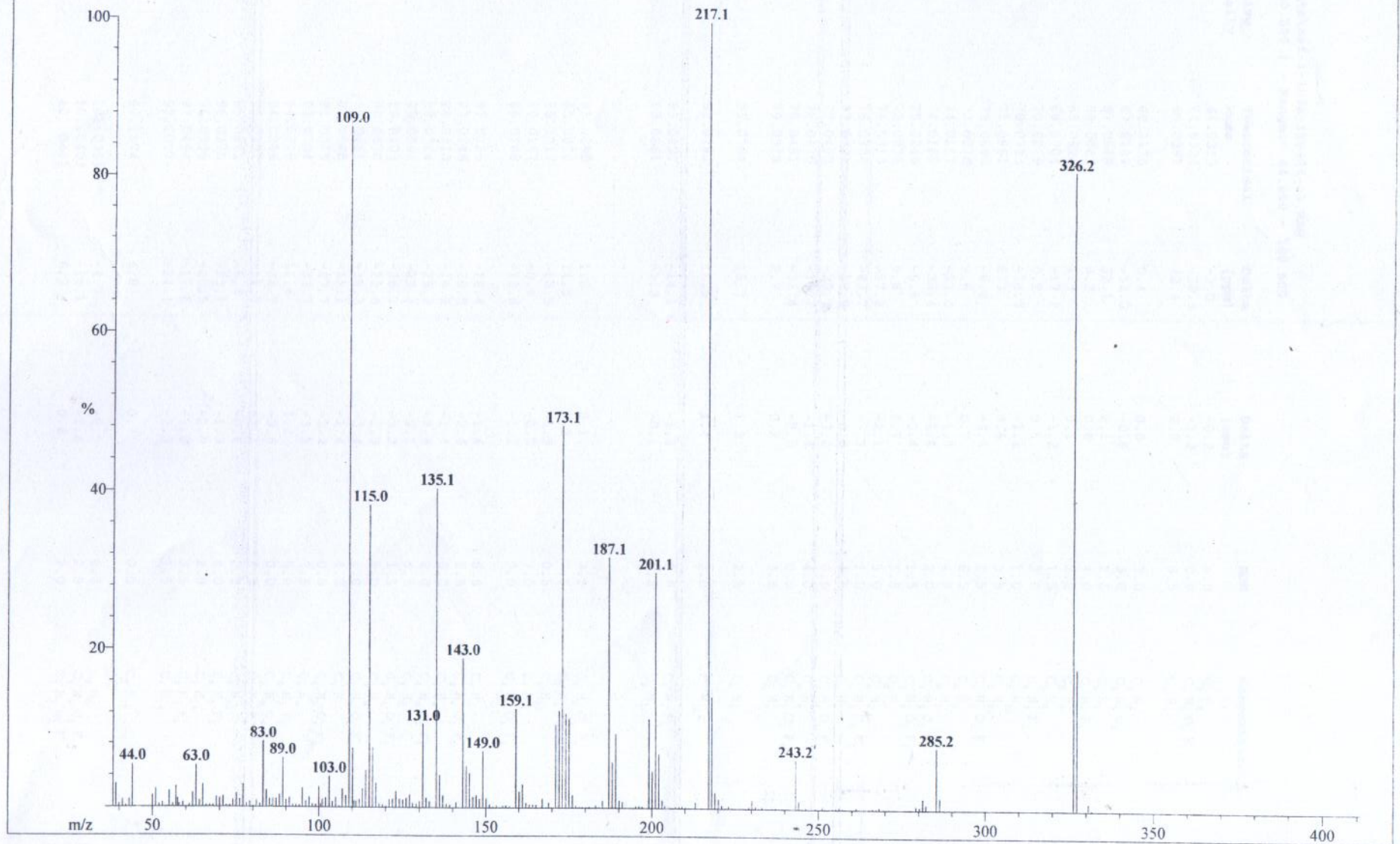
Ionization mode: EI+

Run By: MASS LAB 104

Scan: 9-11

Base: m/z 218; 30.9%FS TIC: 2836901

#Ions: 394



Compound 14

File: ASF-II-51a
Sample: ASIF /PROF. DR. FARZANA
Instrument: JEOL JMS 600H-1
Inlet: Direct Probe

Date Run: 07-08-2024 (Time Run: 14:29:39)

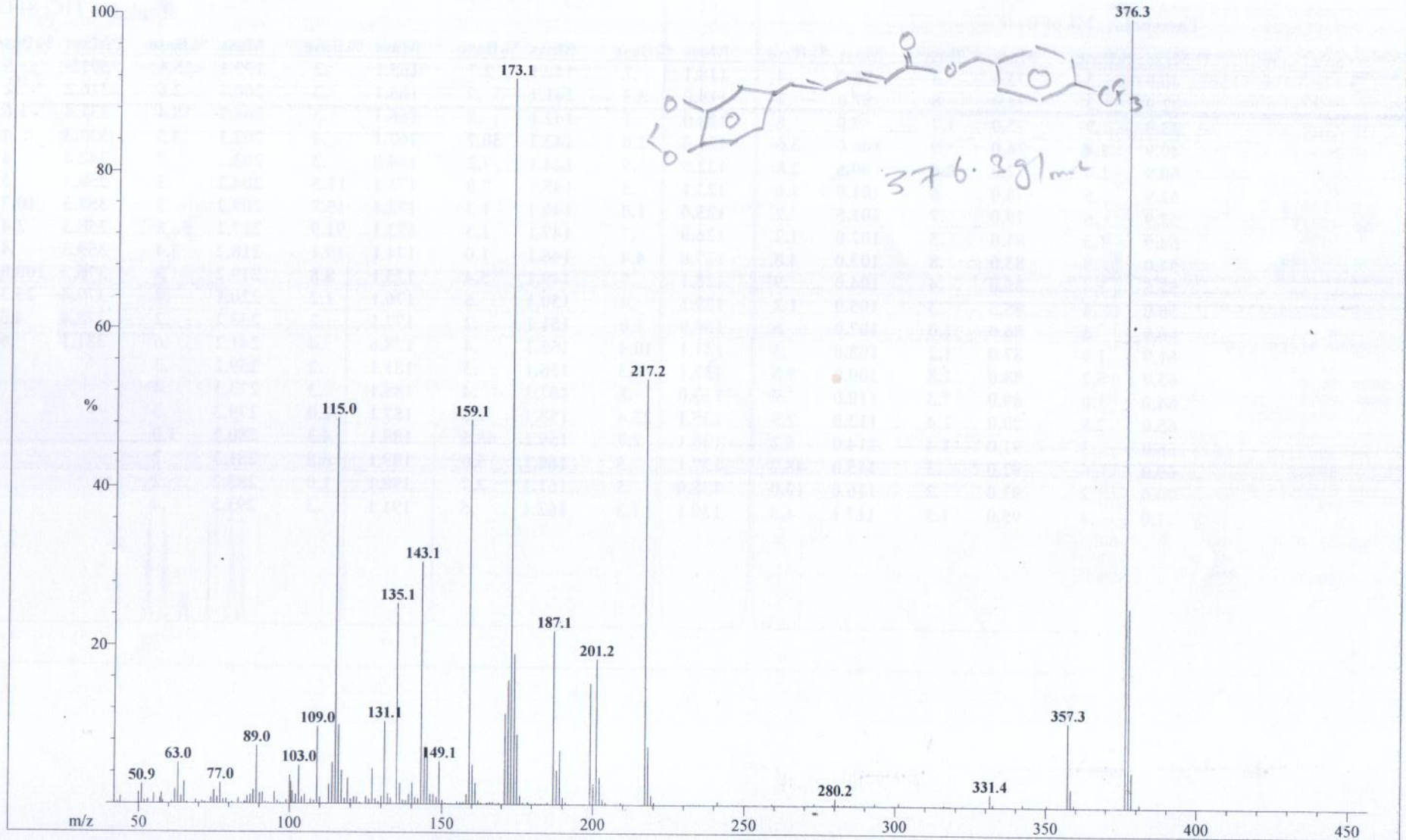
Run By: MASS LAB 104

Ionization mode: EI+

Scan: 30

Base: m/z 376; 99.9%FS TIC: 8145338

#Ions: 374



Compound 15

File: ASF-II-61a

Date Run: 07-10-2024 (Time Run: 15:04:23)

Sample: ASIF /PROF. DR. FARZANA

Instrument: JEOL JMS 600H-1

Run By: MASS LAB 104

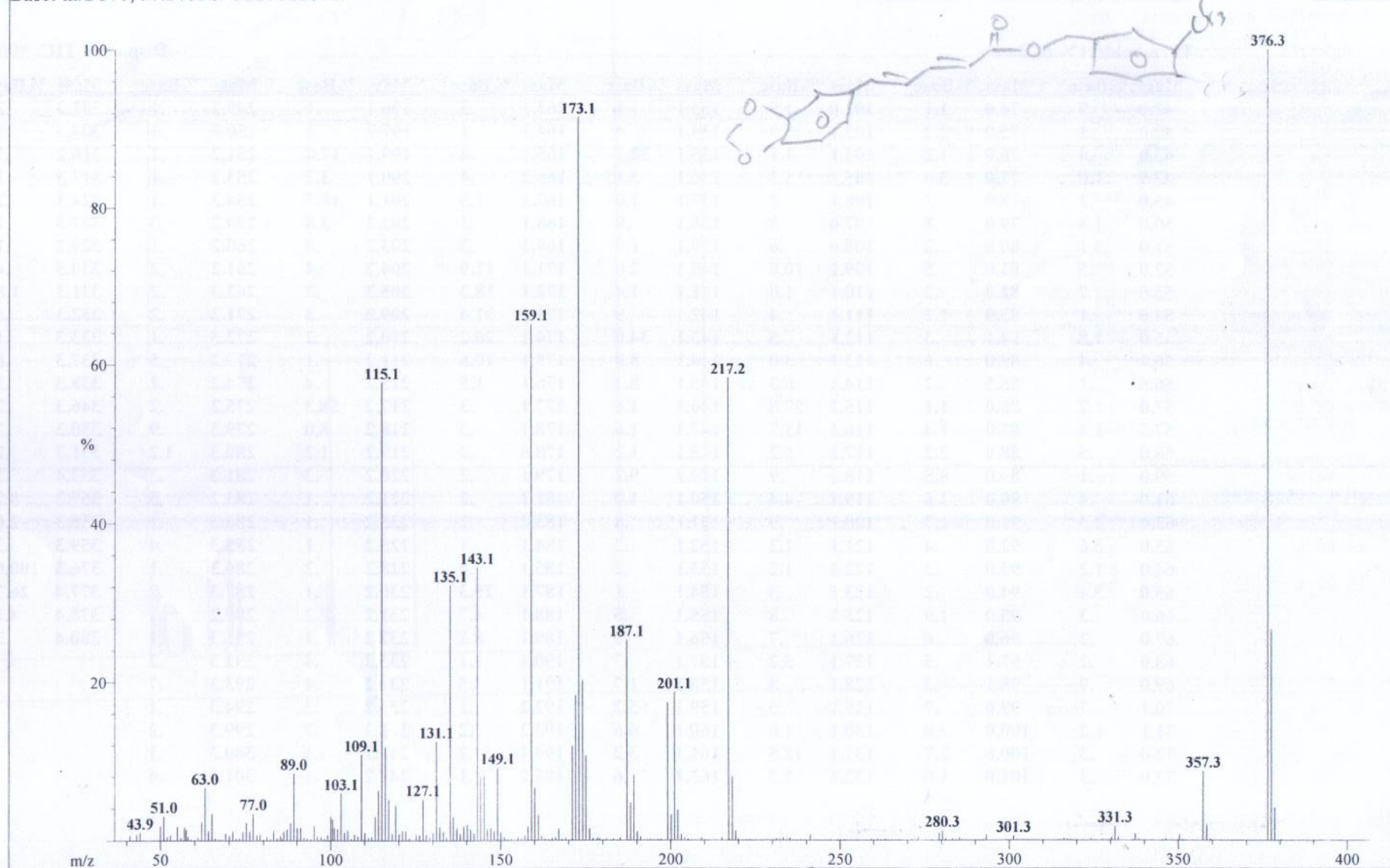
Inlet: Direct Probe

Ionization mode: EI+

Scan: 10-11

Base: m/z 376; 97.2%FS TIC: 9008717

#Ions: 363



Compound 16

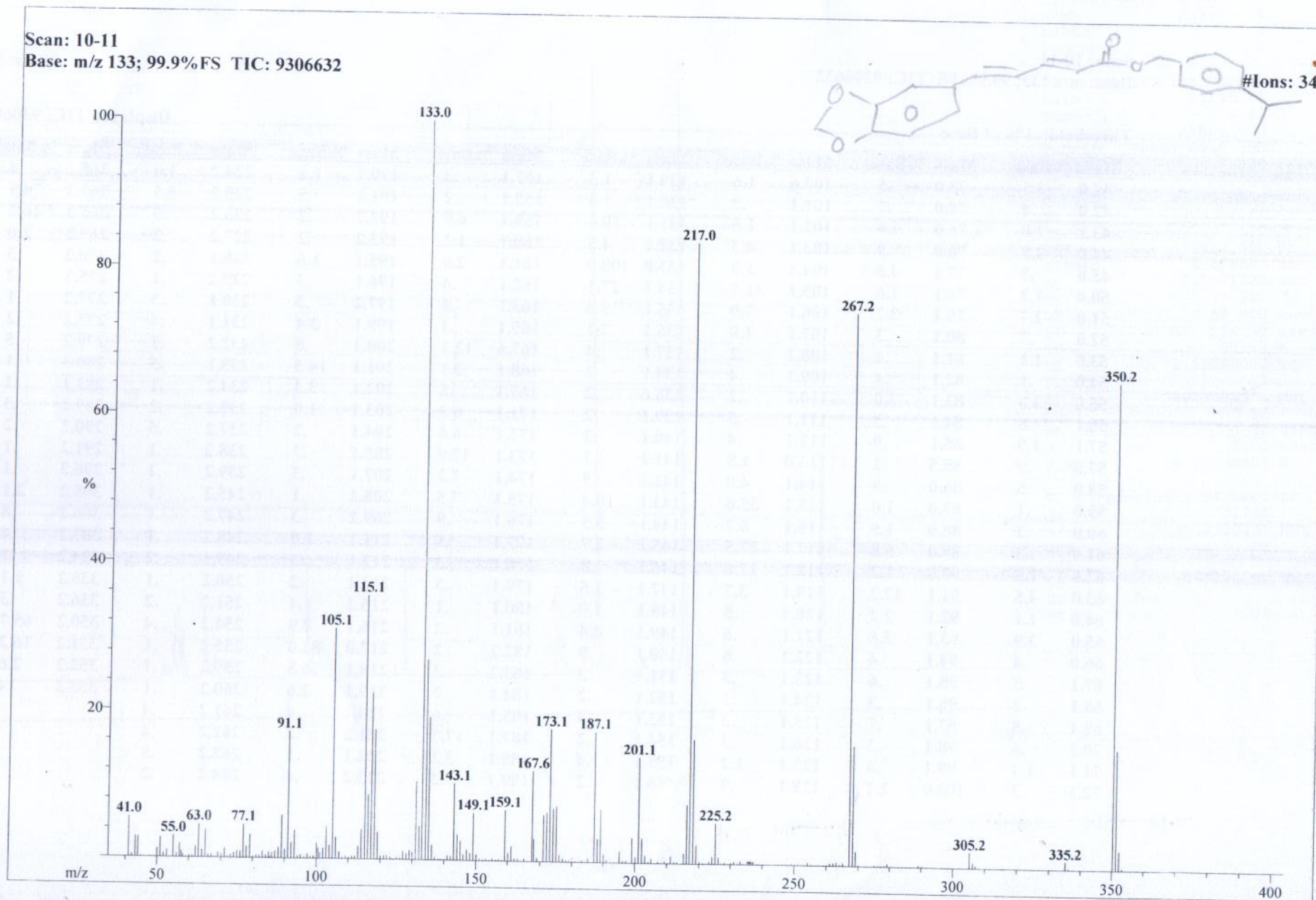
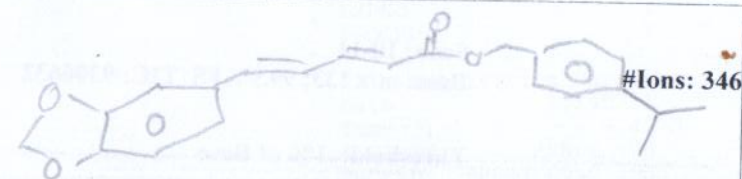
File: ASF-II-55a
Sample: ASIF /PROF. DR. FARZANA
Instrument: JEOL JMS 600H-1
Inlet: Direct Probe

Date Run: 07-10-2024 (Time Run: 14:48:31)

Ionization mode: EI+

Run By: MASS LAB 104

Scan: 10-11
Base: m/z 133; 99.9%FS TIC: 9306632



Compound 17

File: ASF-145a
Sample: ASIF /PROF. DR. FARZANA
Instrument: JEOL JMS 600H-1
Inlet: Direct Probe

Date Run: 07-03-2024 (Time Run: 10:49:59)

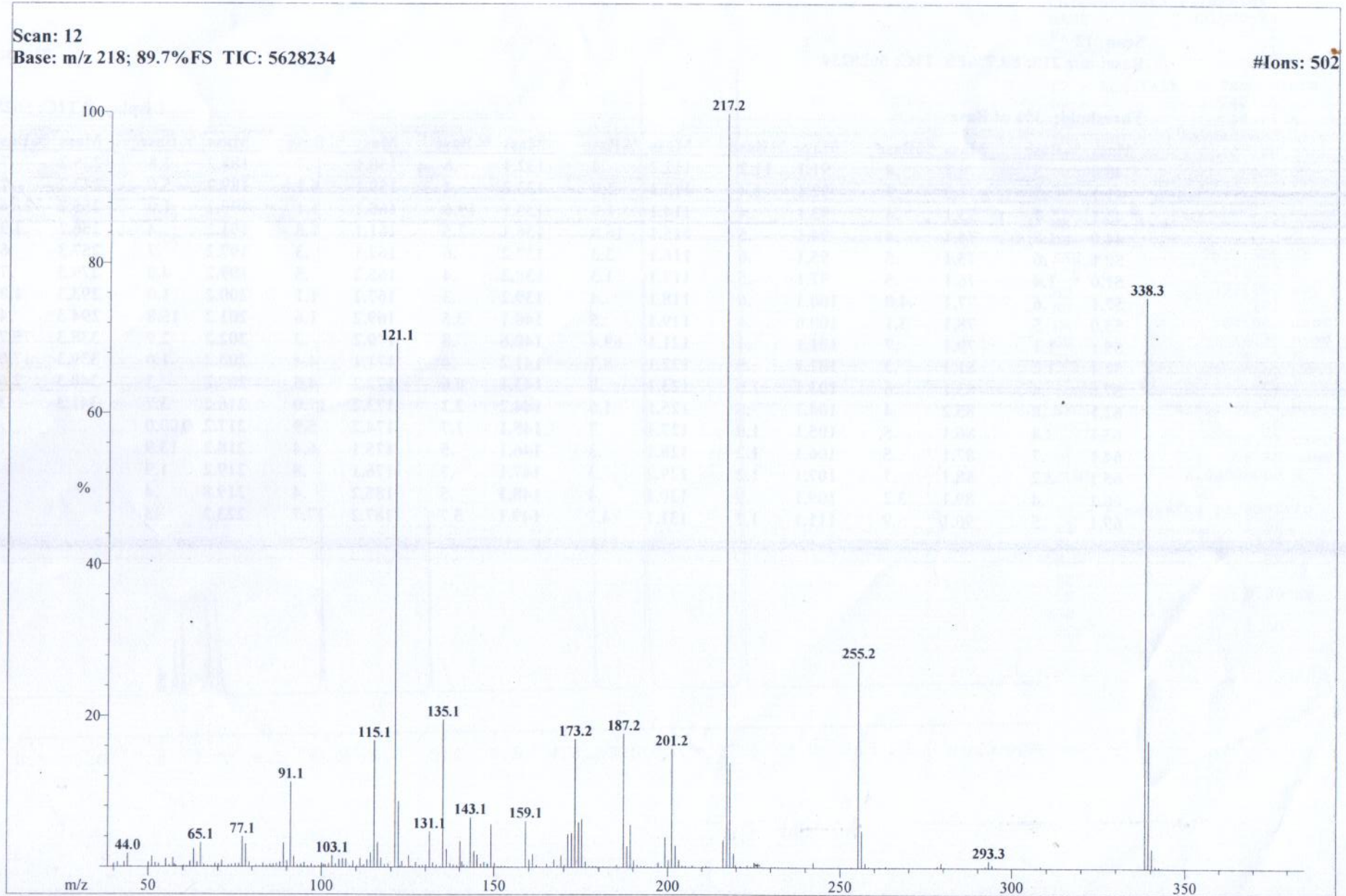
Ionization mode: EI+

Run By: MASS LAB 104

Scan: 12

Base: m/z 218; 89.7%FS TIC: 5628234

#Ions: 502



Compound 18

File: ASF-I-145a
Sample: ASIF /PROF. DR. FARZANA
Instrument: JEOL JMS 600H-1
Inlet: Direct Probe

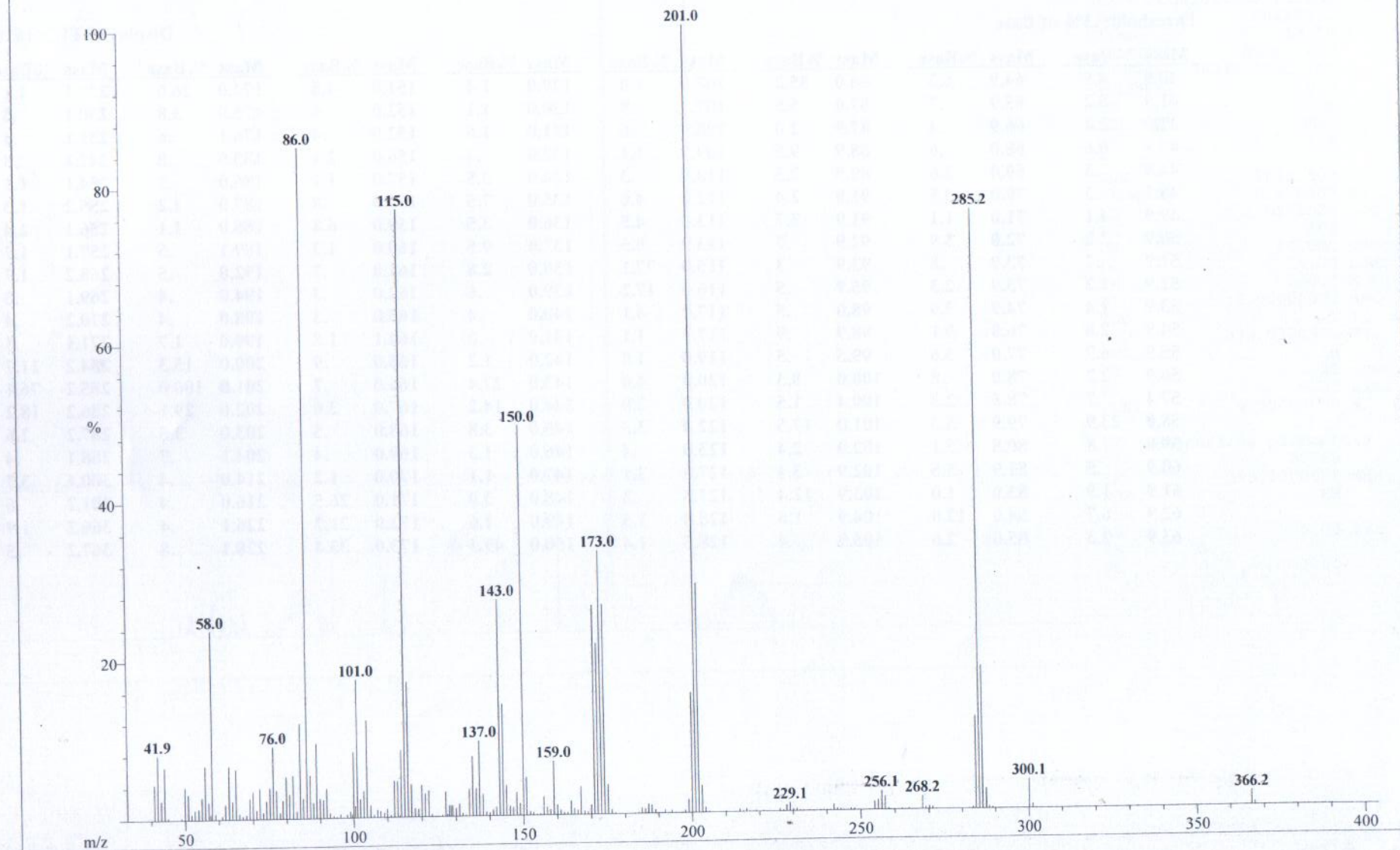
Date Run: 05-31-2024 (Time Run: 10:34:26)

Run By: MASS LAB 104

Ionization mode: EI+

Scan: 20-22
Base: m/z 201; 14.9%FS TIC: 1610984

#Ions: 306



Compound 19

File: ASF-I-153a

Date Run: 06-06-2024 (Time Run: 15:06:50)

Sample: ASIF /PROF. DR. FARZANA

Instrument: JEOL JMS 600H-1

Run By: MASS LAB 104

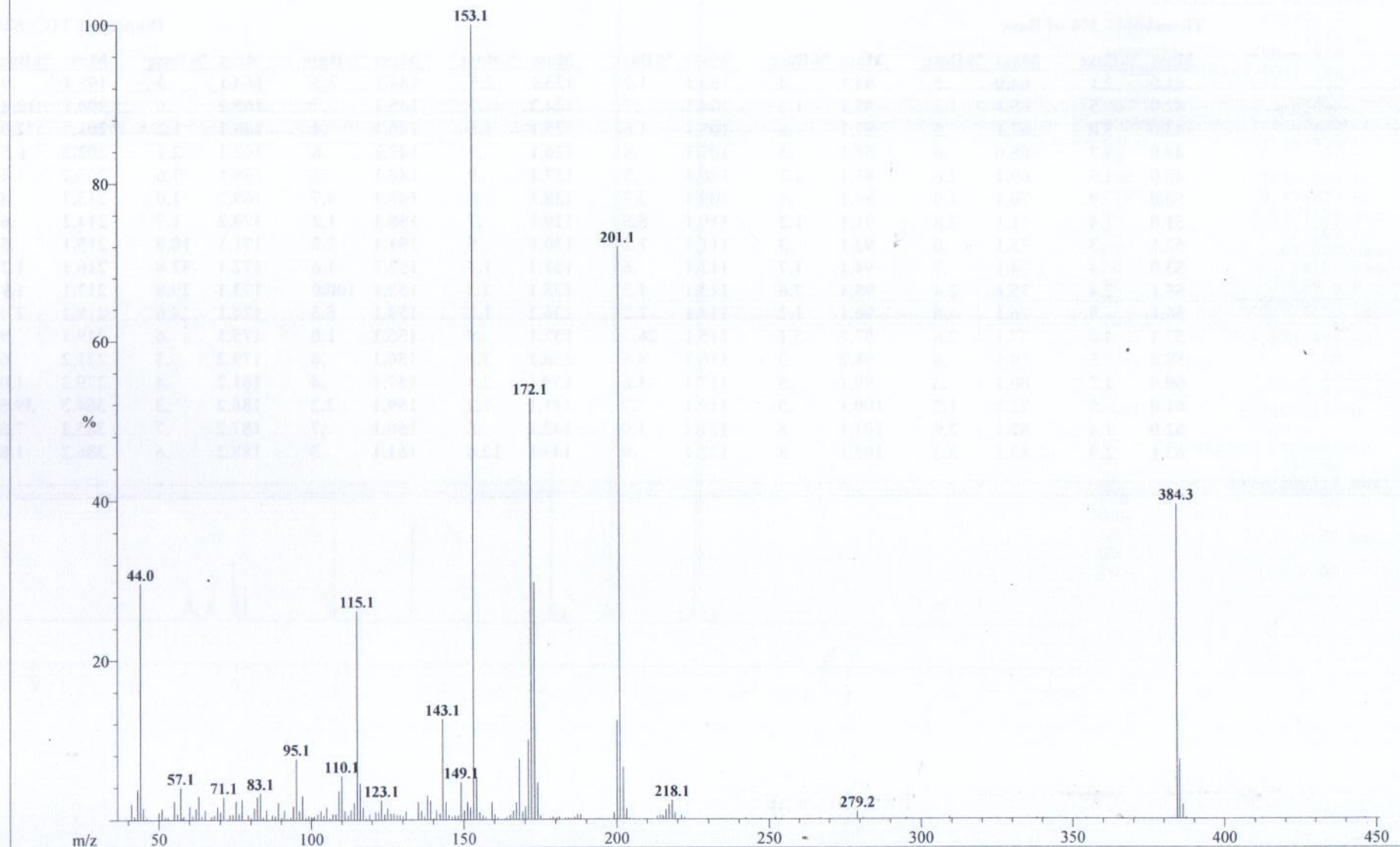
Inlet: Direct Probe

Ionization mode: EI+

Scan: 16

Base: m/z 153; 13.3%FS TIC: 824344

#Ions: 232



Compound 20

HEJ-ICCBS
6/6/2024 3:41:35 PM

File: ASF-I-151a
Sample: ASIF /PROF. DR. FARZANA
Instrument: JEOL JMS 600H-1
Inlet: Direct Probe

Date Run: 06-06-2024 (Time Run: 15:33:41)

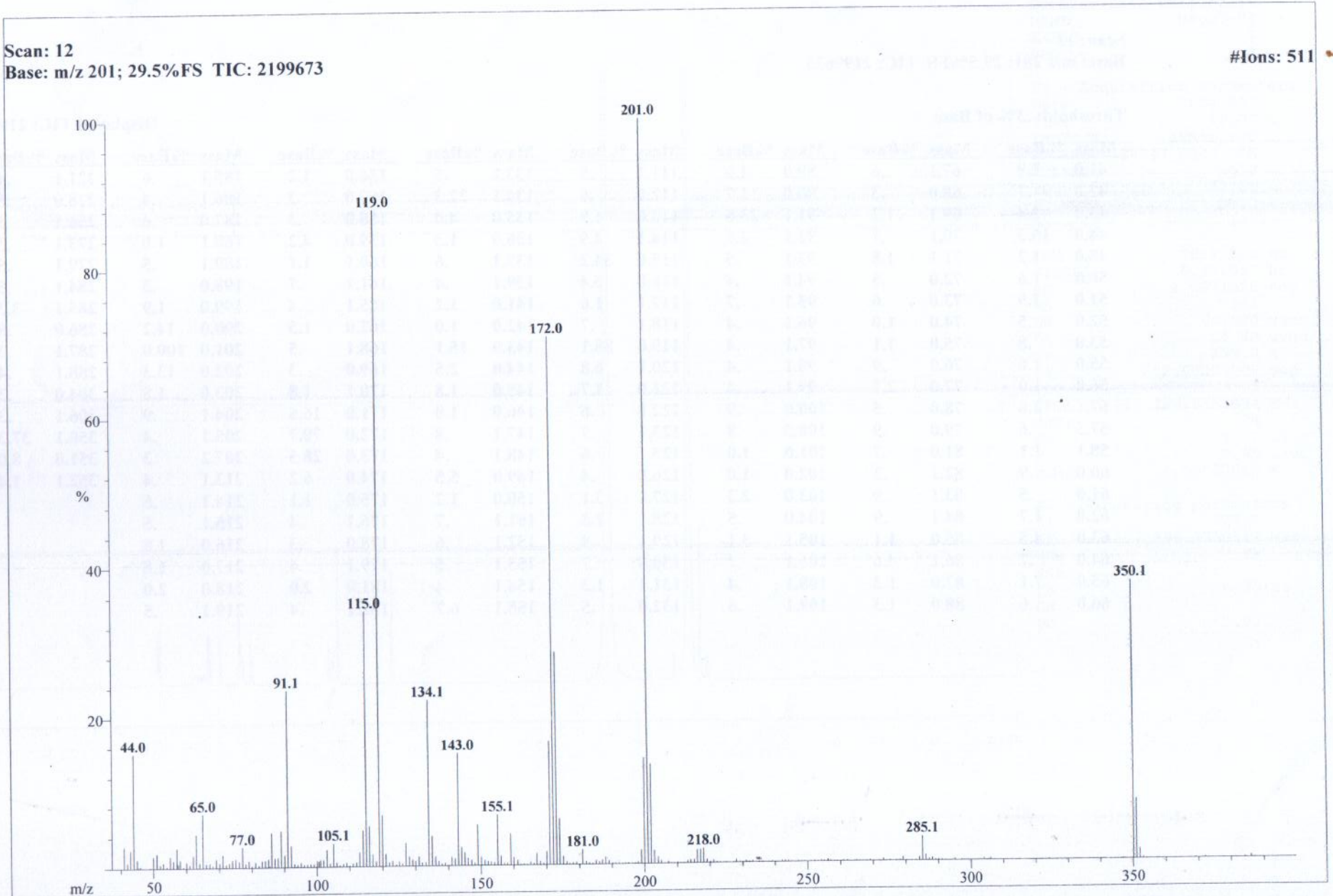
Run By: MASS LAB 104

Ionization mode: EI+

Scan: 12

Base: m/z 201; 29.5%FS TIC: 2199673

#Ions: 511



Compound 21

File: ASF-I-155a
Sample: ASIF /PROF. DR. FARZANA
Instrument: JEOL JMS 600H-1
Inlet: Direct Probe

Date Run: 06-06-2024 (Time Run: 14:53:37)

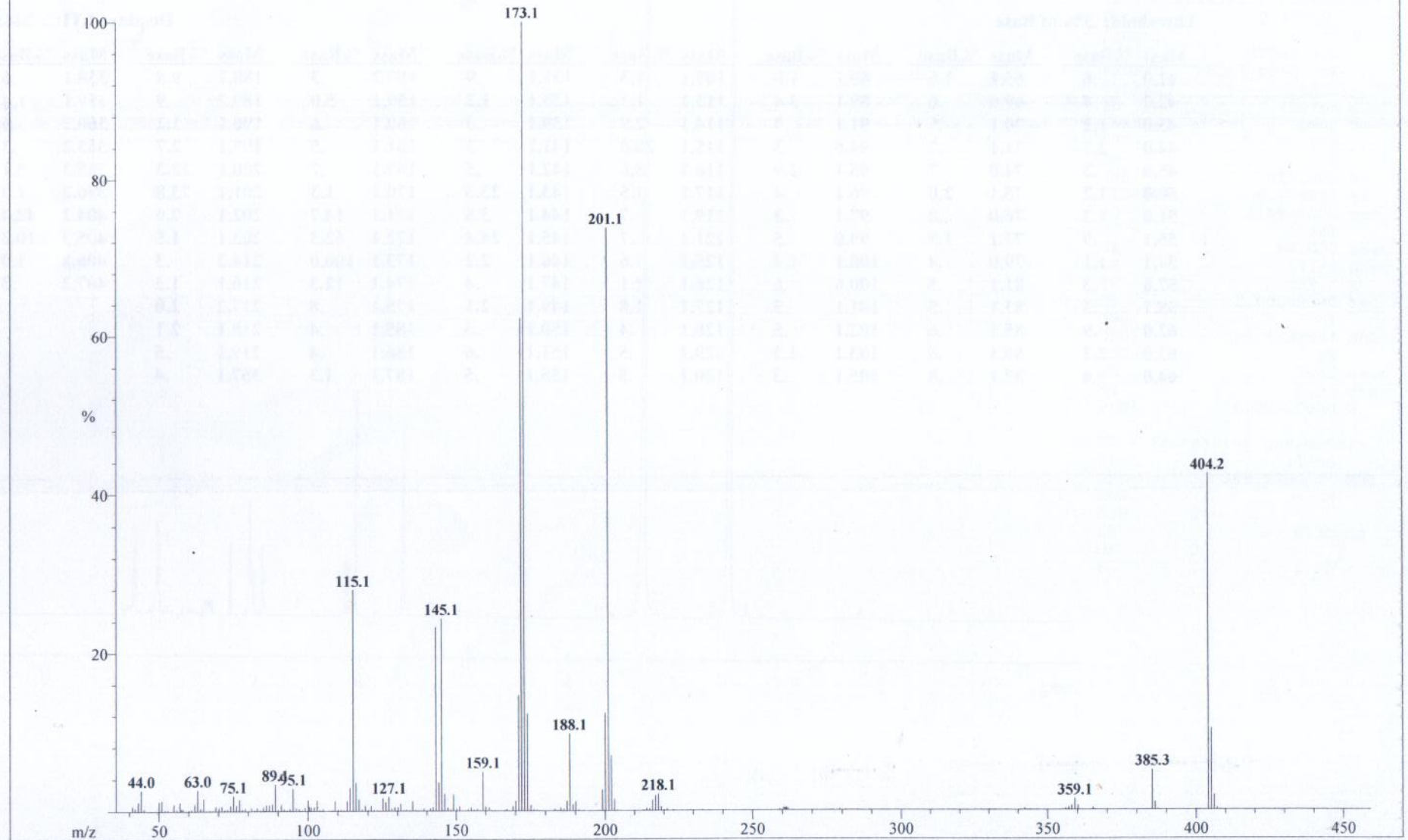
Run By: MASS LAB 104

Ionization mode: EI+

Scan: 15

Base: m/z 173; 42.7%FS TIC: 2443270

#Ions: 314



Compound 22

File: ASF-I-149a

Date Run: 06-06-2024 (Time Run: 14:39:46)

Sample: ASIF /PROF. DR. FARZANA

Instrument: JEOL JMS 600H-1

Run By: MASS LAB 104

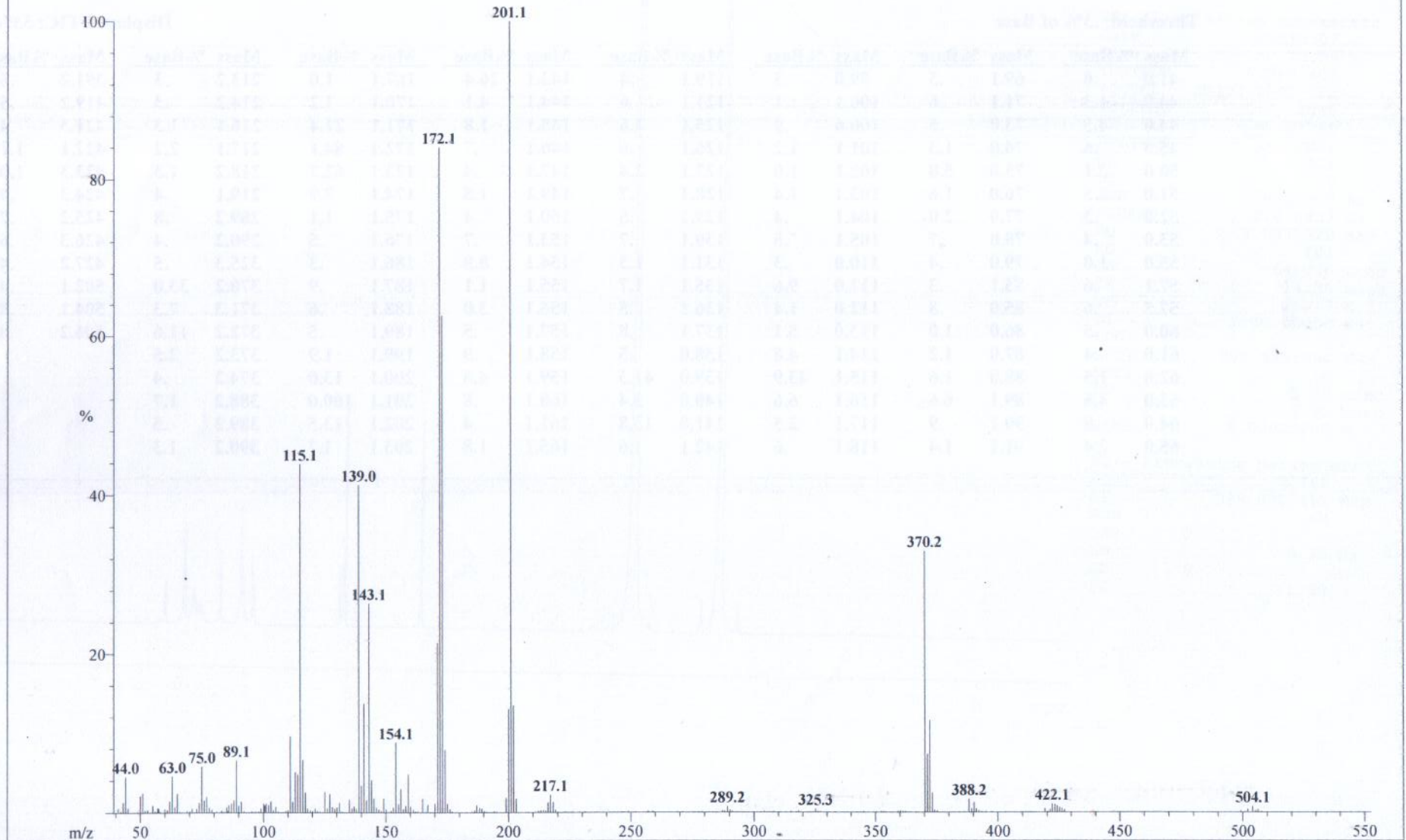
Inlet: Direct Probe

Ionization mode: EI+

Scan: 17

Base: m/z 201; 75%FS TIC: 5354730

#Ions: 518



Compound 23

File: ASF-I-159a
Sample: ASIF /PROF. DR. FARZANA
Instrument: JEOL JMS 600H-1
Inlet: Direct Probe

Date Run: 06-06-2024 (Time Run: 15:54:04)

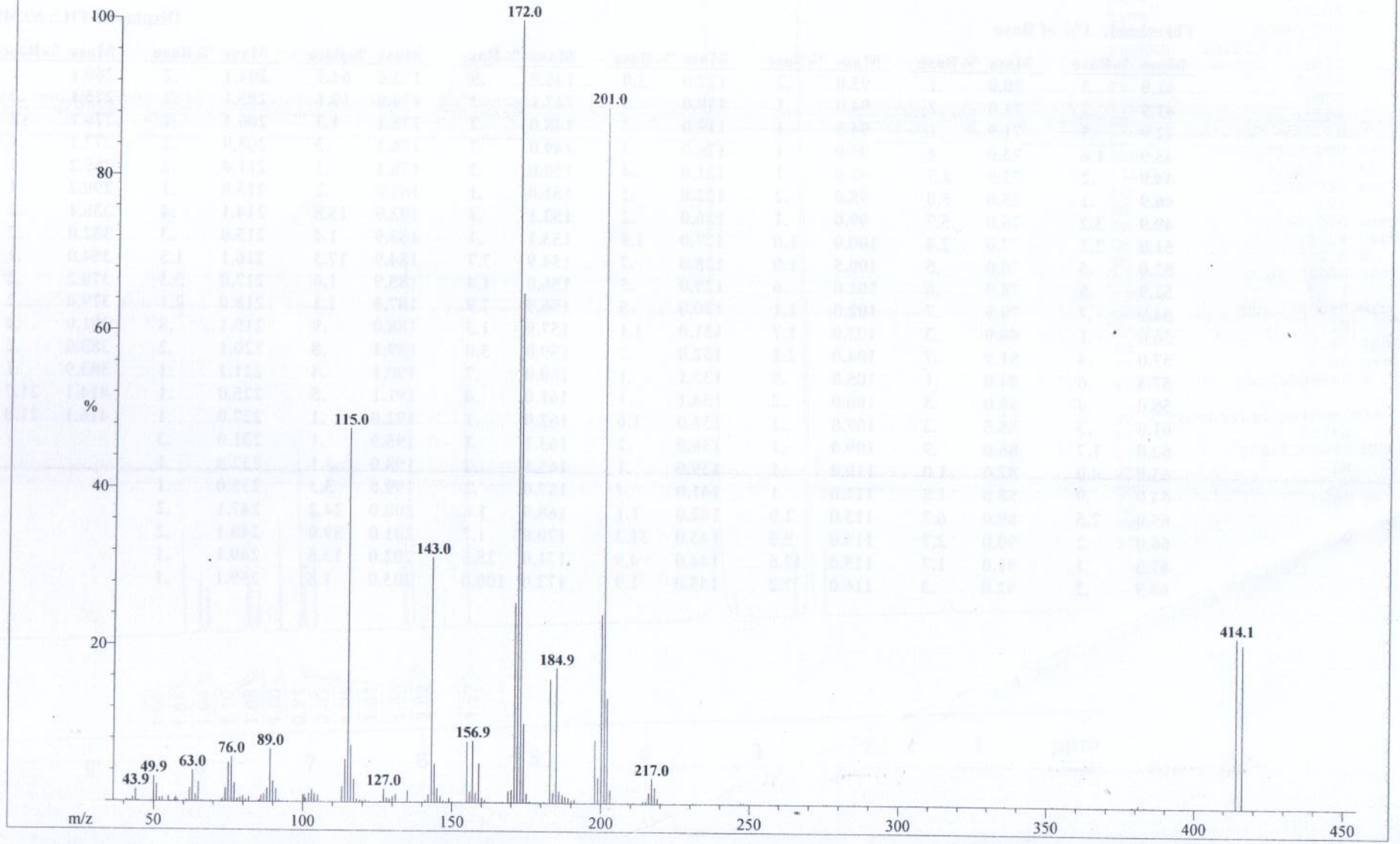
Ionization mode: EI+

Run By: MASS LAB 104

Scan: 47

Base: m/z 172; 99.9%FS TIC: 6934554

#Ions: 742



Compound 24

File: ASF-II-43a

Date Run: 07-01-2024 (Time Run: 15:13:48)

Sample: ASIF /PROF. DR. FARZANA

Instrument: JEOL JMS 600H-1

Run By: MASS LAB 104

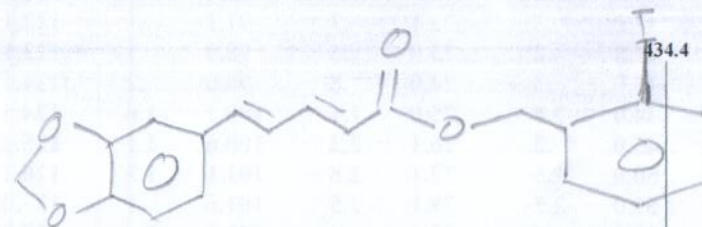
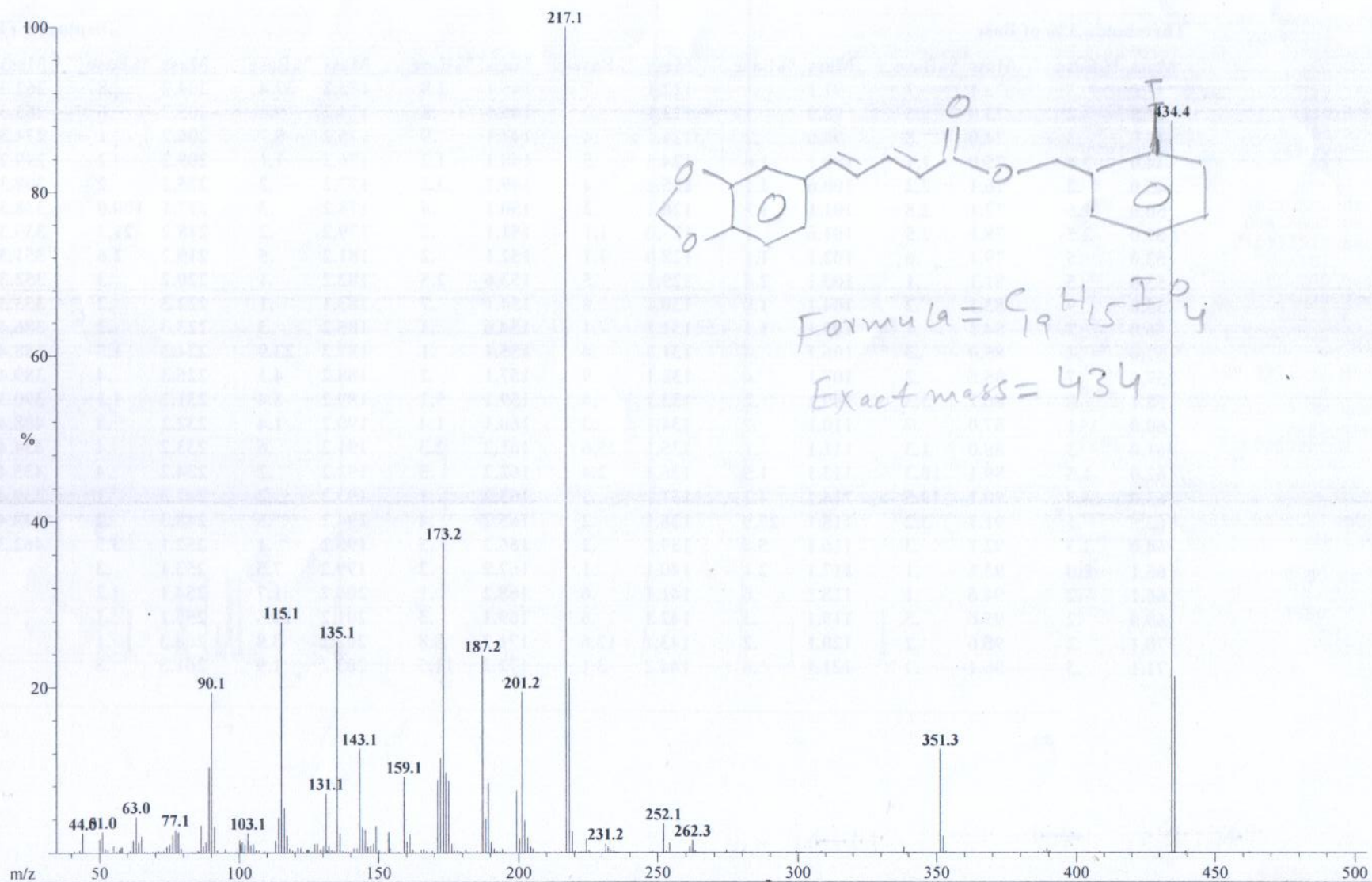
Inlet: Direct Probe

Ionization mode: EI+

Scan: 14-16

Base: m/z 217; 99.9%FS TIC: 6729201

#Ions: 444



Formula = $C_{19}H_{15}I_4$
Exact mass = 434

Compound 25

File: ASF-II-89a
Sample: ASIF /PROF. DR. FARZANA
Instrument: JEOL JMS 600H-1
Inlet: Direct Probe

Date Run: 07-26-2024 (Time Run: 14:56:32)

Run By: MASS LAB 104

Ionization mode: EI+

Scan: 20
Base: m/z 201; 40.6%FS TIC: 2925992

