

In-situ Construction of Multifunctional $\text{Li}_2\text{Si}_2\text{O}_5/\text{LiAlSiO}_4/\text{C}$ Networks on Micron Silicon Anodes for High Initial Coulombic Efficiency

Jingyu Yang, Xikai Zhou and Junfeng Rong*

Sinopec Research Institute of Petroleum Processing Co., Ltd. Beijing, 100083, PR China

* Corresponding author: Rongjunfeng.ripp@sinopec.com

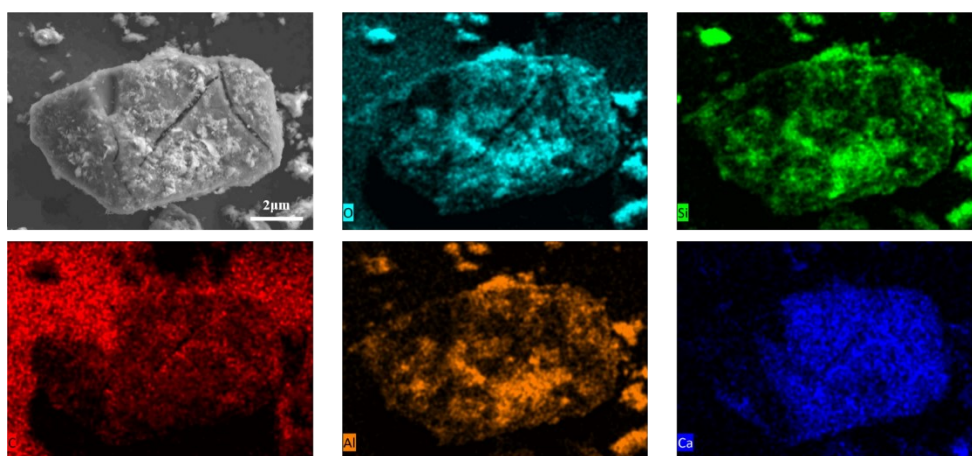


Fig.S1:EDS mapping of CSA.

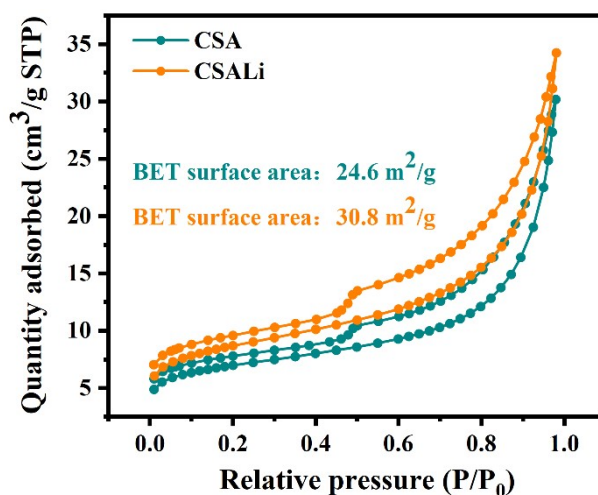


Fig.S2: BET of CSA and CSALi.

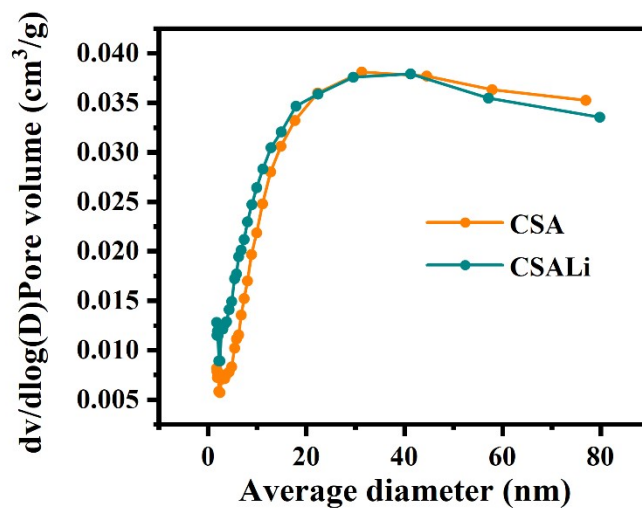


Fig.S3: Pore volume of CSA and CSALi.

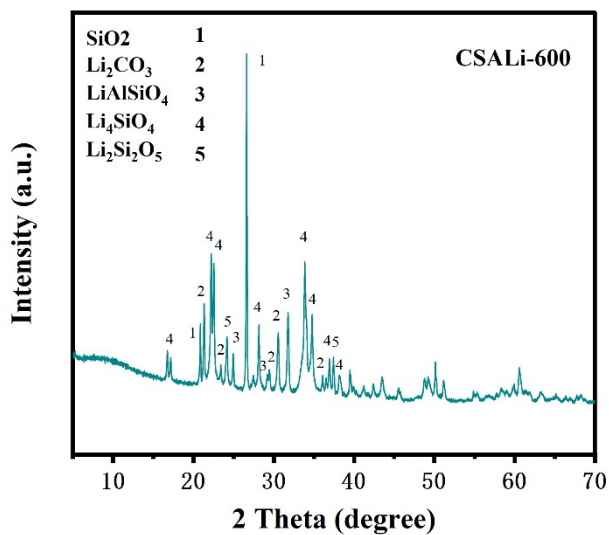


Fig.S4: XRD of CSALi (Excessive Li).

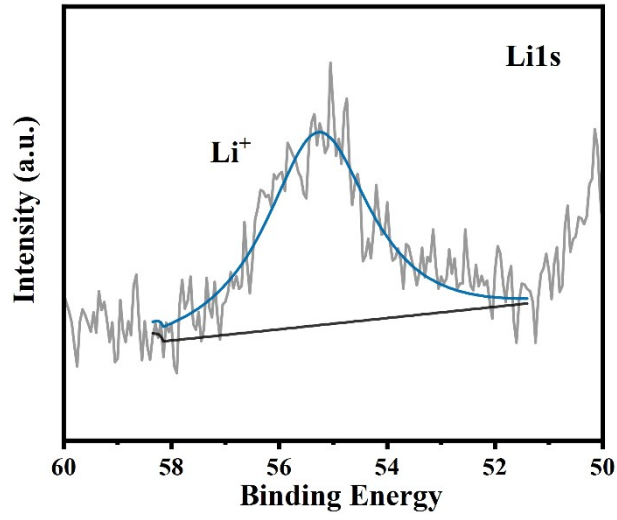


Fig.S5: Li1s of CLS12-1000.

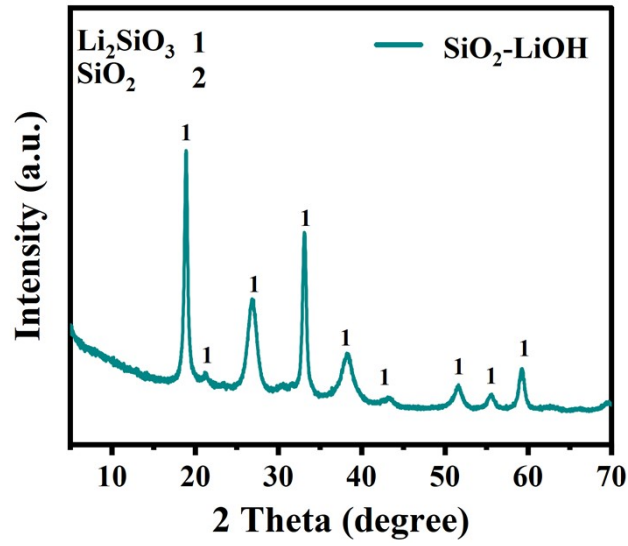


Fig.S6: XRD of pre-ball-milling SiO₂ and LiOH sample.