

Electronic Supplementary Material

Derivatization-assisted dual-mode colorimetric and fluorometric detection of dopamine using 4-hexyl resorcinol

Mohamed N. Goda^a, Laila S. Alqarni^a, Faisal K. Algethami^a, Hossieny Ibrahim^b,

Al-Montaser Bellah H. Ali^c, Ramadan Ali^d, Mohamed M. El-Wakil^{b, c*}

^a Department of Chemistry, College of Science, Imam Mohammad Ibn Saud Islamic University (IMSIU), Riyadh 11623, Saudi Arabia

^b School of Biotechnology, Badr University in Assiut (BUA), Assiut 2014101, Egypt

^c Department of Pharmaceutical Analytical Chemistry, Faculty of Pharmacy, Assiut University, Assiut, Egypt

^d Department of Pharmaceutical Chemistry, Faculty of Pharmacy, University of Tabuk, Tabuk 71491, Saudi Arabia

Correspondence

***mohamed.elwakeel@pharm.aun.edu.eg, mohamed.mohamoud@ymail.com**

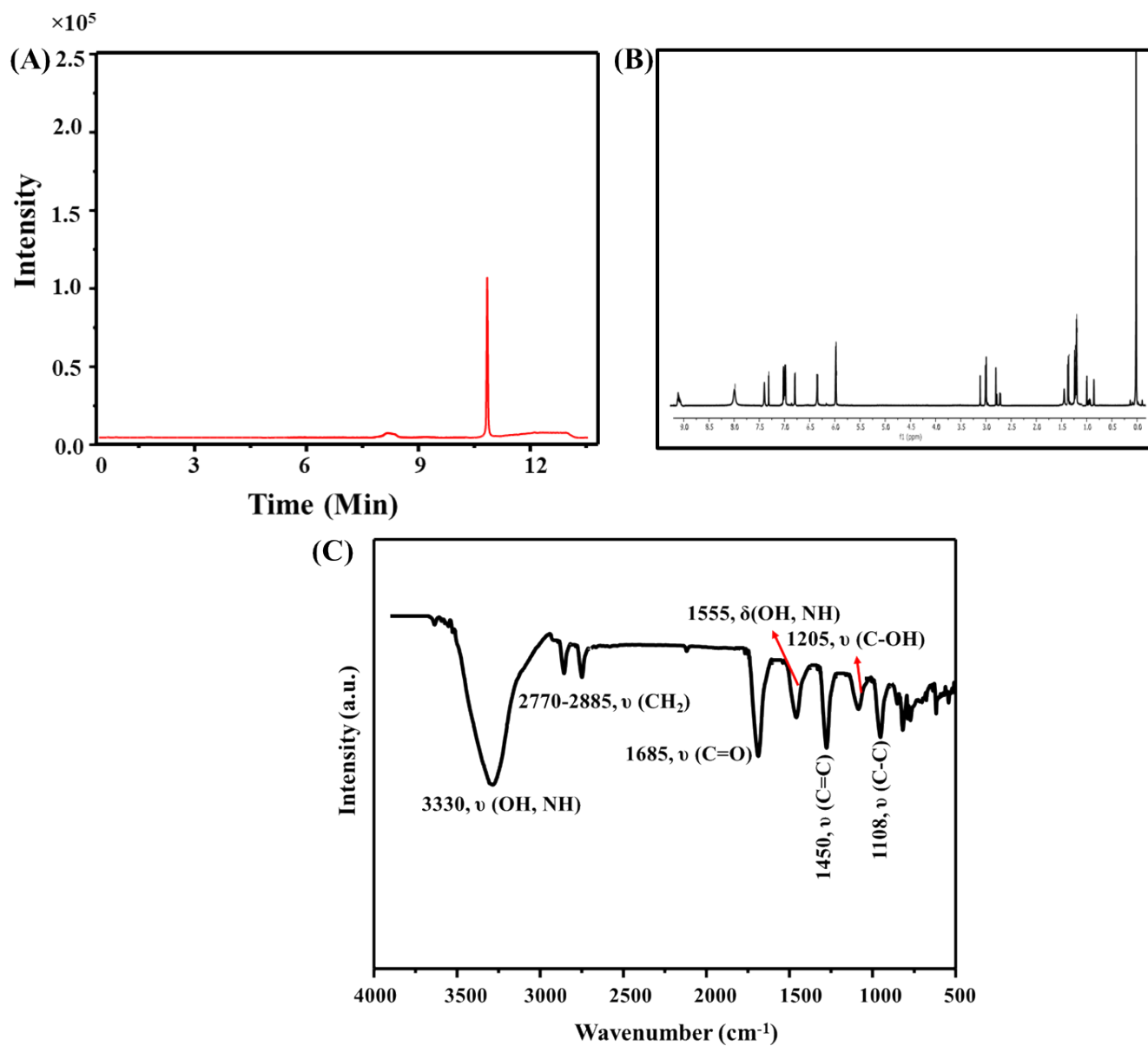


Fig. S1 (A) Chromatogram of separated DA and azamonardine; (B) $^1\text{H-NMR}$ of azamonardine; (C) FT-IR (B) of the azamonardine.

Table S1 Gradient elution program

Time(min)	Mobile phase methanol (%)	Mobile phase 0.048 g/mL acetate solution (%)
0.0	10	90
2.0	10	90
6.0	65	35
14	65	35
19	10	90
25	10	90