

1 **Tumor Cell Membrane-Engineered MXene Nanoplatfom**
2 **for Chemo-Photothermal Immunotherapy of Bladder**
3 **Cancer**

4 **Zijing Peng^{1*}, Zhengnan Huang^{2*}, Zhuofan Nan^{1*}, Yilin Yan^{2*}, Huaxing Li², Zeyi Wang³, Wei**
5 **Yao⁴, Xiaodong Zhu^{4#}, Bing Shen^{1,2#}, and Xiangqian Cao^{2#}**

6 ¹Department of Urology, Shanghai General Hospital, Shanghai Jiao Tong University School of
7 Medicine, Shanghai 200080, China

8 ²Department of Urology, Shanghai Tenth People's Hospital, Tongji University School of Medicine,
9 Shanghai 200072, China.

10 ³Department of Urology, Huadong Hospital Affiliated to Fudan University, Shanghai, 200040,
11 China.

12 ⁴Department of Nanomedicine, Naval Medical University, Shanghai 200433, China

13

14 Zijing Peng^{1*}

15 Zhengnan Huang^{2*}

16 Zhuofan Nan^{1*}

17 Yilin Yan^{1*}

18 *These authors contributed equally to this work

19

20 #Correspondence: Xiaodong Zhu, Department of Nanomedicine, Naval Medical University, 800

21 Xiangyin Road, Yangpu District, Shanghai, 200433, China, Tel/Fax +86 15800840088, Email

22 xdzhu26@yeah.net; Bing Shen, Department of Urology, Shanghai General Hospital, Shanghai

23 Jiaotong University School of Medicine, 85 Wujin Road, Hongkou District, Shanghai, 200080,

24 People's Republic of China, Tel/Fax +86 18017181979, Email urodrshenbing@shsmu.edu.cn;

25 Xiangqian Cao, Department of Urology, Shanghai Tenth People's Hospital, Tongji University

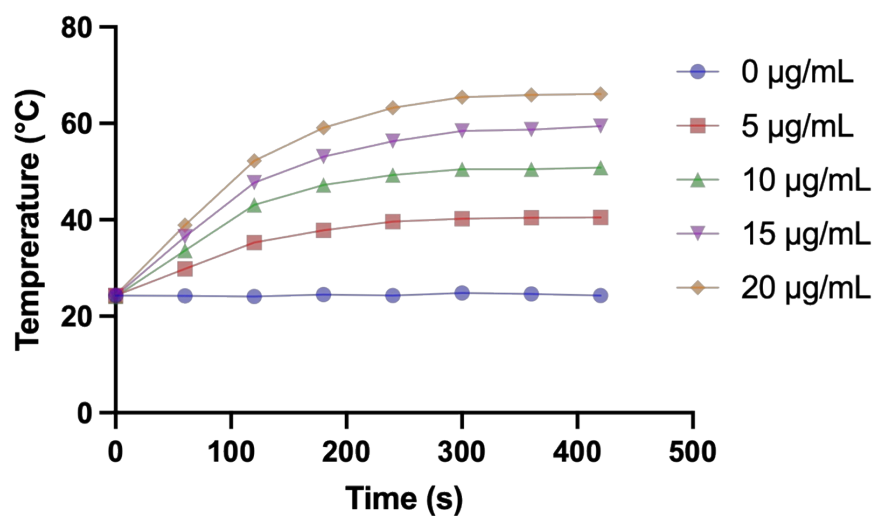
26 School of Medicine, 301 Yanchang Road, Jingan District, Shanghai, 200072, People's Republic of

27 China, Tel/Fax +86 18817314953, Email cxqcaoxiangqian@163.com

28

29

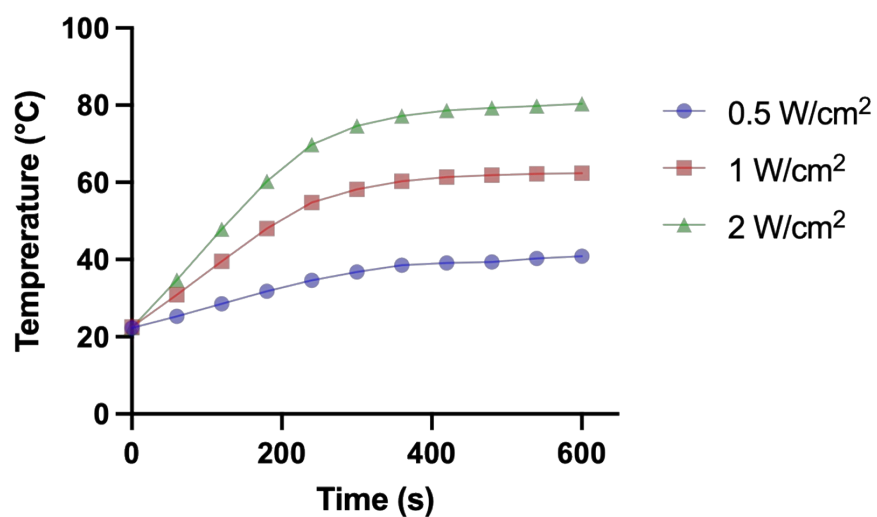
30



31

32 **Figure S1.** Temperature elevation profiles of MXene@TCM-DOX under 808 nm NIR laser

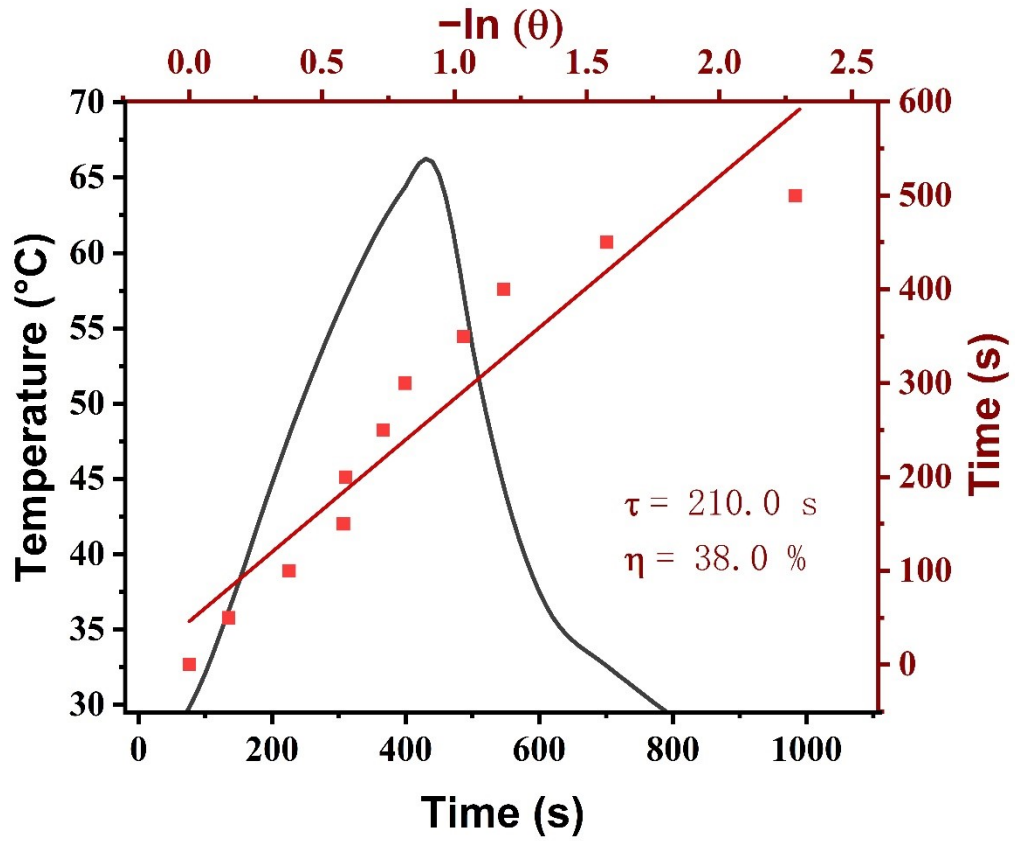
33 irradiation at different concentrations.



34

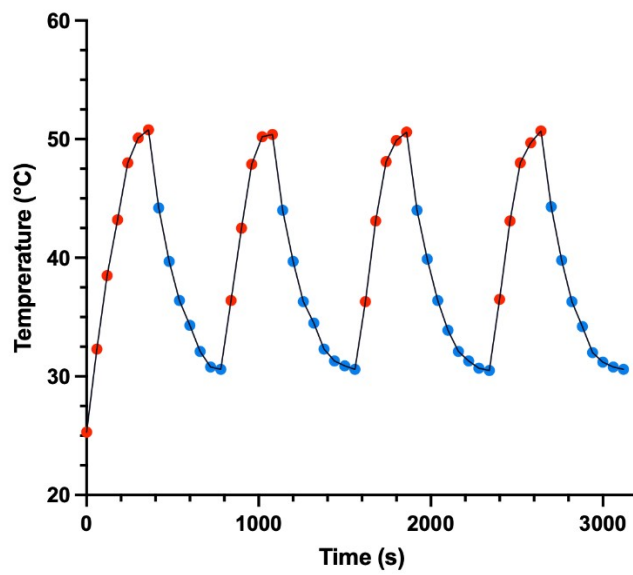
35 **Figure S2.** Photothermal heating curves of MXene@TCM-DOX under 808 nm NIR laser irradiation

36 at different power densities.



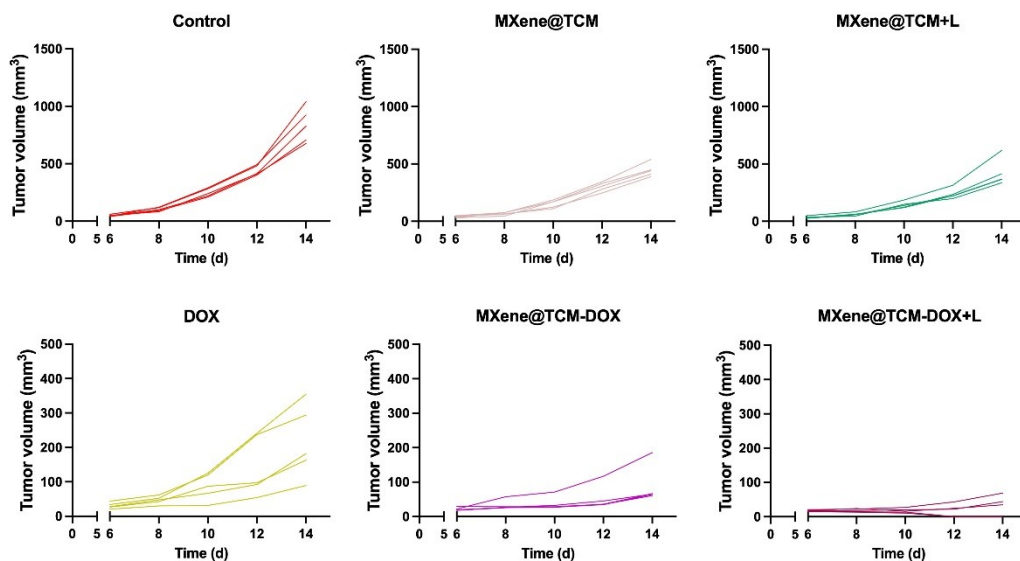
37

38 **Figure S3.** Photothermal conversion efficiency analysis of MXene@TCM-DOX under 808 nm NIR
 39 laser irradiation. The heating and cooling profile was used to calculate the system time constant, τ ,
 40 and the photothermal conversion efficiency, η .



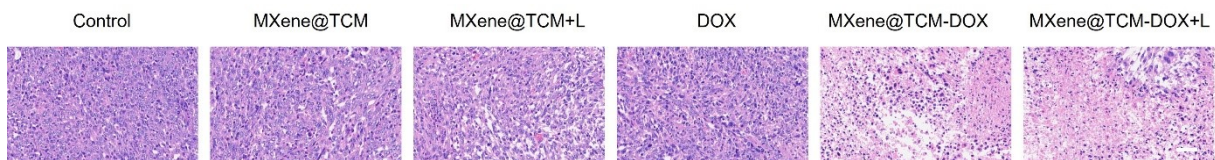
41

42 **Figure S4.** Photothermal stability of MXene@TCM-DOX under repeated 808 nm near-infrared
 43 laser irradiation.



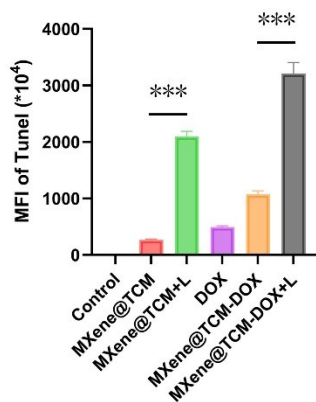
44
 45 **Figure S5.** Individual tumor growth curves in subcutaneous MB49 tumor-bearing mice under
 46 different treatments. N=5

47



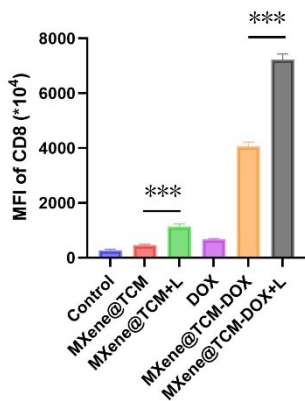
48
 49 **Figure S6.** Hematoxylin-eosin (H&E) staining of tumor tissues from subcutaneous MB49 tumor-
 50 bearing mice after different treatments. Scale bar: 100 μ m.

51



52

53 **Figure S7.** Quantification of TUNEL fluorescence intensity in tumor tissues after different
54 treatments. Data are mean \pm SD. ***P < 0.001.



55

56 **Figure S8.** Quantification of CD8 immunofluorescence intensity in tumor tissues after different
57 treatments. Data are mean \pm SD. **P < 0.01. ***P < 0.001

58