

Supporting Information

Table S1 Primer sequences used in qRT-PCR.

Species	Gene	Sequence (5'→3')
Mice	<i>Gadph</i>	AGGTCGGTGTGAACGGATTTG (forward)
		TGTAGACCATGTAGTTGAGGTCA (reverse)
Mice	<i>Il-1β</i>	TGGTGTGTGACGTTCCC (forward)
		TGTCCATTGAGGTGGAGAG (reverse)
Mice	<i>Il-6</i>	TTCACAAGTCGGAGGCTTA (forward)
		CAAGTGCATCATCGTTGTTC (reverse)
Mice	<i>iNOS</i>	ACGCTTCACTTCCAATGCAAC (forward)
		CAGCCTCATGGTAAACACGTTC (reverse)
Mice	<i>Tnf-α</i>	CGCTGAGGTCAATCTGC (forward)
		GGCTGGGTAGAGAATGGA (reverse)
Rat	<i>Gadph</i>	GGCACAGTCAAGGCTGAGAATG (forward)
		ATGGTGGTGAAGACGCCAGTA (reverse)
Rat	<i>Il-1β</i>	AAGCTCTCCACCTCAATGGAC (forward)
		GTGCCGTCTTTCATCACACAG (reverse)
Rat	<i>Il-6</i>	ATTGTATGAACAGCGATGATGCAC (forward)
		CCAGGTAGAAACGGAActCCAGA (reverse)
Rat	<i>Il-17a</i>	GTCCTCAACTCCCTTAGCTCAA (forward)
		CCTCCAGATCACAGAAGGATATC (reverse)
Rat	<i>iNOS</i>	CTTGGAGCGAGTTGTGGATTG (forward)
		CCTCTTGTCTTTGACCCAGTAGC (reverse)
Human	<i>GAPDH</i>	GATTCCACCCATGGCAAATTC (forward)
		CTGGAAGATGGTGATGGGATT (reverse)
Human	<i>BSP</i>	GAACCACTTCCCCACCTTTTG (forward)
		ATTCTGACCATCATAGCCATCG (reverse)
Human	<i>ALP</i>	TAAGGACATCGCCTACCAGCTC (forward)
		TCTTCCAGGTGTCAACGAGGT (reverse)

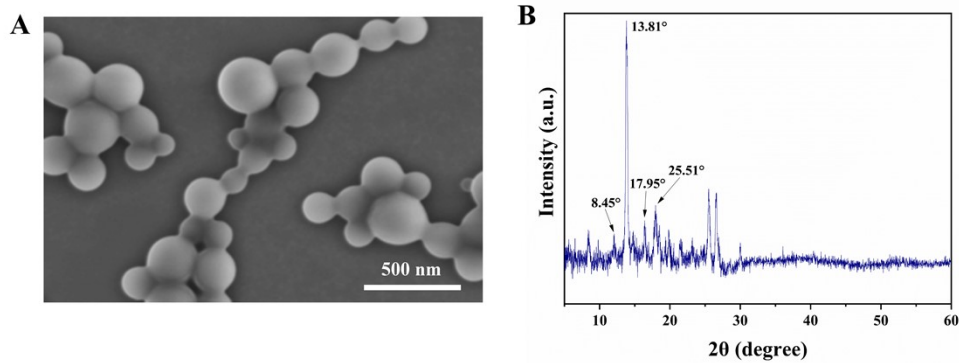


Figure S1. (A) SEM image and (B) XRD pattern of nano-curcumin (nCur).

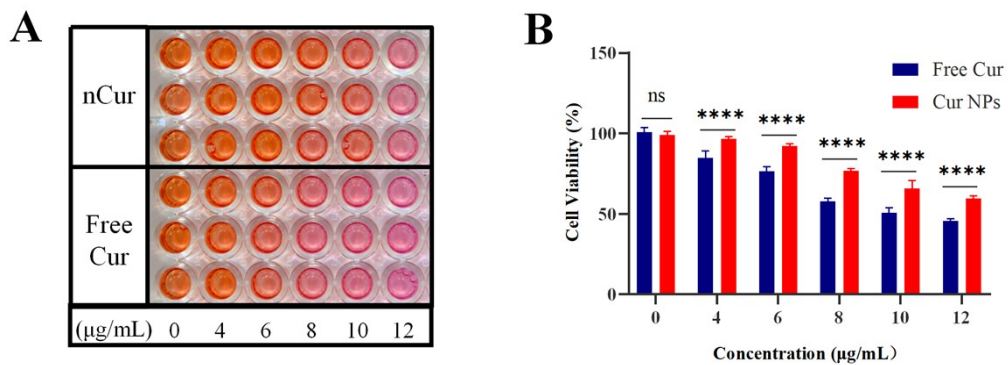


Figure S2. (A) Digital photographs of CCK-8 assay in RAW264.7 cells after 24 h incubation with different concentrations of curcumin. (B) Cell viability of hPDLs after 24 h incubation with various concentrations of curcumin. Data are represented as mean \pm SD (n=3). **** p < 0.0001.

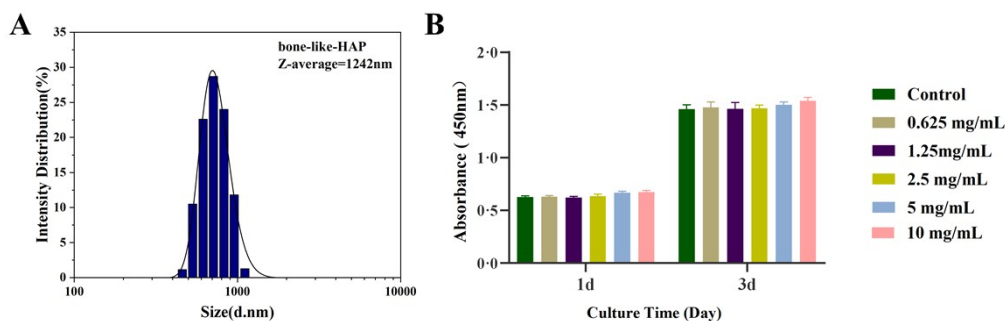


Figure S3. (A) Size distribution of bone-like HAP. (B) CCK-8 assay of RAW264.7 cells after treatment with bone-like HAP for 1 day and 3 days. Data are represented as

mean \pm SD (n=3).

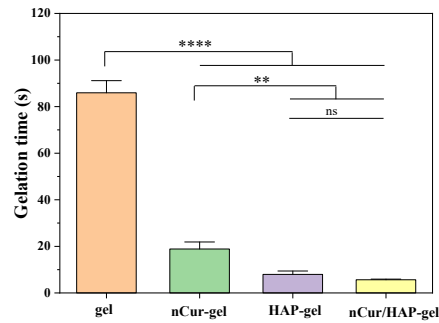


Figure S4. Quantitative analysis of gelation time. Data are represented as mean \pm SD (n=3). ** $p < 0.01$, **** $p < 0.0001$.

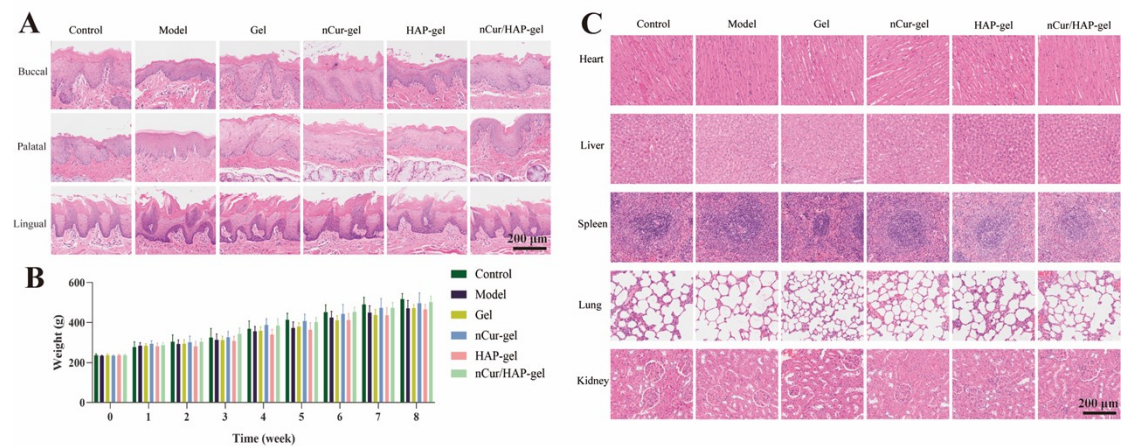


Figure S5. *In vivo* biocompatibility of the hydrogels. (A) Representative H&E-stained images of the buccal mucosa, palatal mucosa, and tongue mucosa (n=3). (B) Changes in body weight of rats (n=6). (C) Representative H&E-stained images of major organs (heart, liver, spleen, lung, and kidney) (n=3). Data are represented as mean \pm SD.

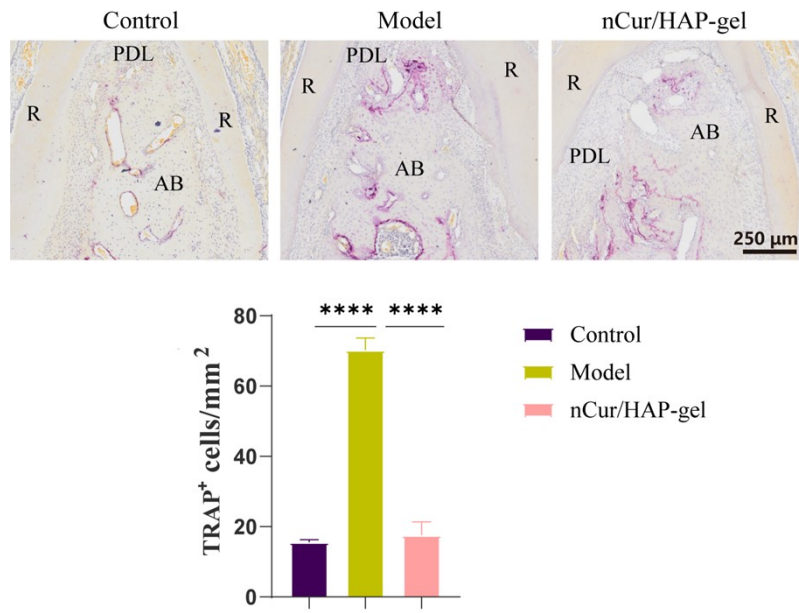


Figure S6. Representative images of tartrate-resistant acid phosphatase (TRAP) staining and statistical analysis of TRAP-positive cells. R: root; PDL: periodontal ligament; AB: alveolar bone. Data are represented as mean \pm SD (n=3). **** $p < 0.0001$.