

Fig. S1. Unit cell contents of $[\text{Pt}\{4'(\text{o-CH}_3\text{-Ph})\text{trpy}\}\text{Cl}]\text{SbF}_6$ viewed down the $[c]$ -axis.

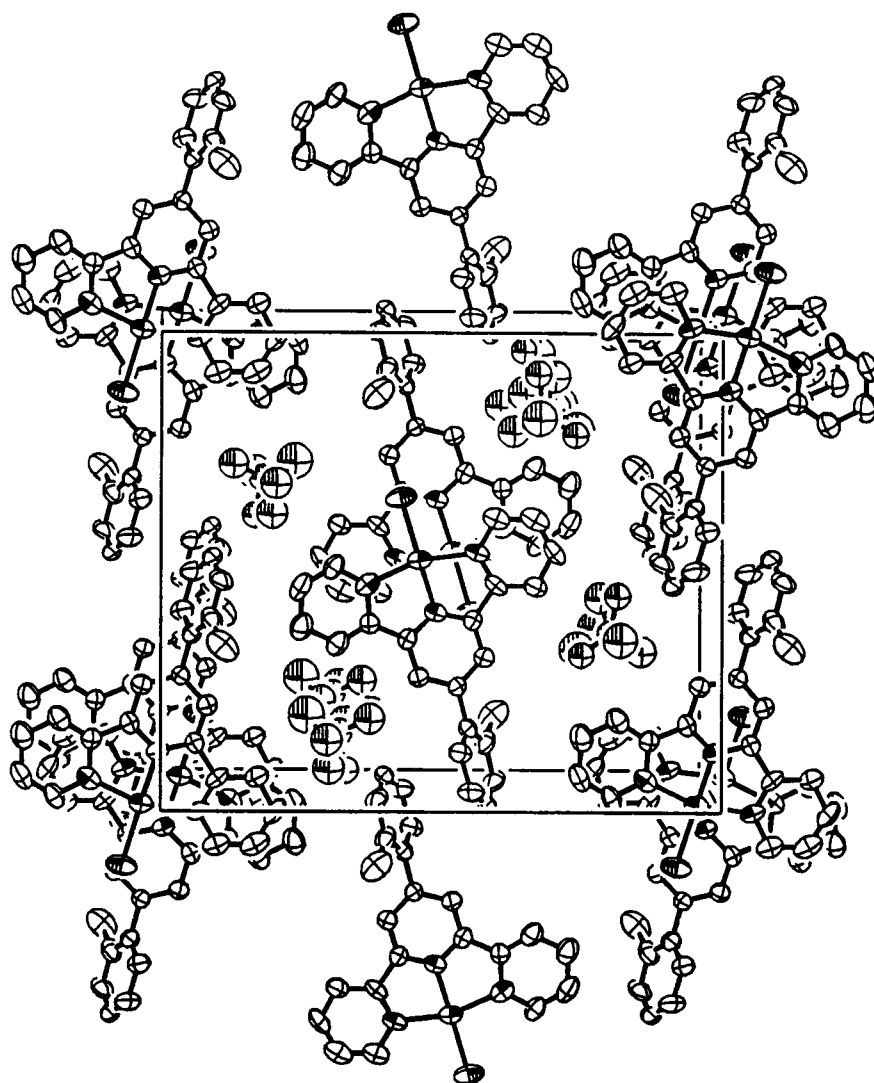


Fig. S2. Unit cell contents of $[\text{Pt}\{4'-(o\text{-CH}_3\text{-Ph})\text{trpy}\}\text{Cl}]\text{BF}_4$ viewed down the $[a]$ -axis

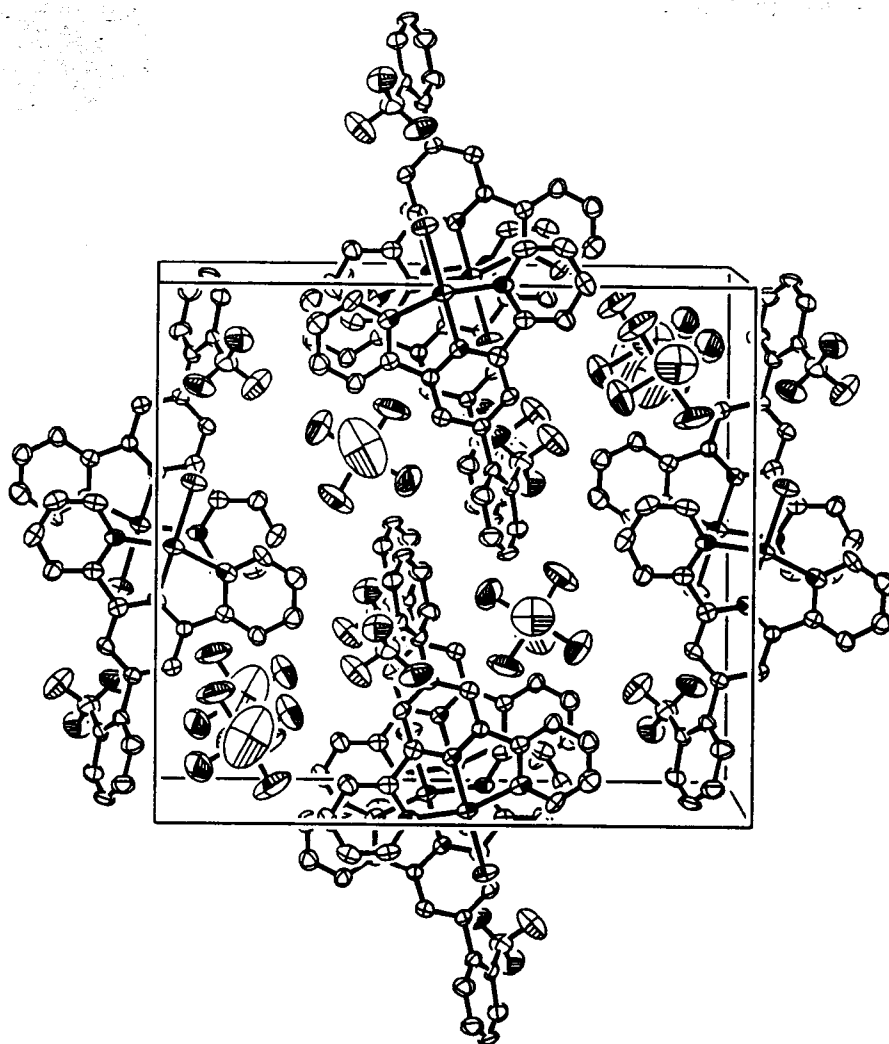


Fig. S3. Unit cell contents of $[\text{Pt}\{4'(\text{o}-\text{CF}_3\text{-Ph})\text{trpy}\}\text{Cl}]\text{SbF}_6$ viewed down the $[a]$ -axis