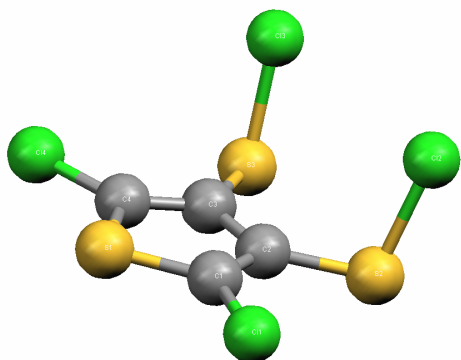
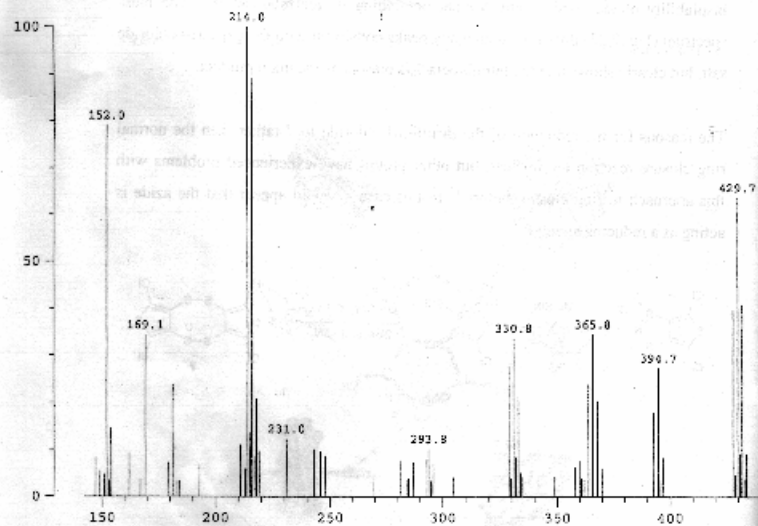
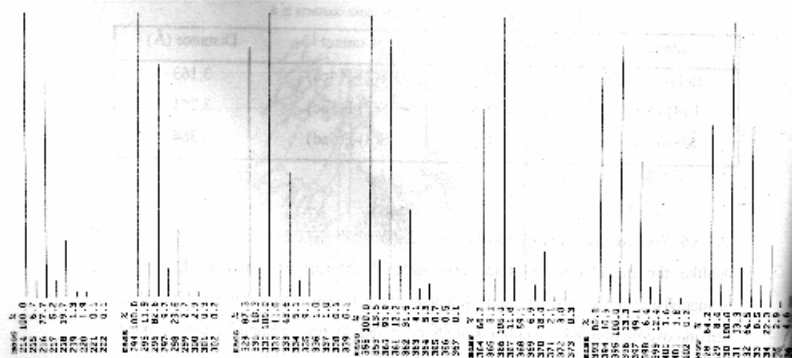


Sup-01



Sup-02



Mass spectrum and simulation (top). Assignments are: 429.7 ( $M^+$ ), 394.7 ( $M - Cl$ ), 365.8 ( $M - S_2^+$ ), 359.7 ( $M - Cl_2^+$ ), 330.8 ( $M - ClS_2^+$ ), 293.8 ( $M - Cl_2S_2^+$ ), 214 ( $M - C_6Cl_6S_2^+$ ).