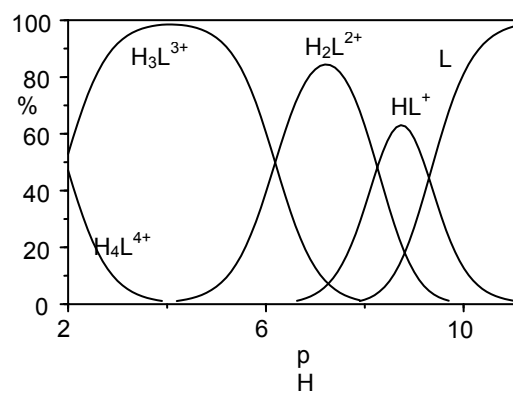


a



b

Figure S1. pH dependence of the ^1H NMR signals of L1 (a) and distribution diagram of the L1 protonated species (b)

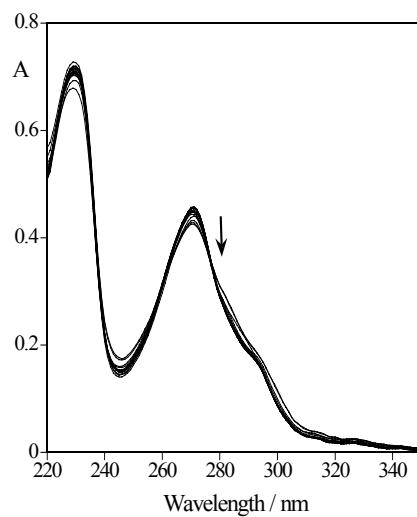


Fig. S2. pH dependence of the absorption spectra of L1 aqueous solution. ($[L1] = 1.30 \cdot 10^{-5} \text{ M}$ I = 0.1 M NMe_4Cl , 298 K). (pH = 1.16; 1.51; 1.73; 2.07; 2.28; 2.50; 2.76; 3.07; 3.60; 4.05; 4.72; 5.30; 6.00; 6.22; 6.39; 6.77; 7.30; 8.25; 9.11; 10.78; 11.30).