

Supplementary material

TG-MS:

The TG-MS analyses were performed using a Netzsch TG209 system at a heating rate of 10 K min^{-1} under Argon.

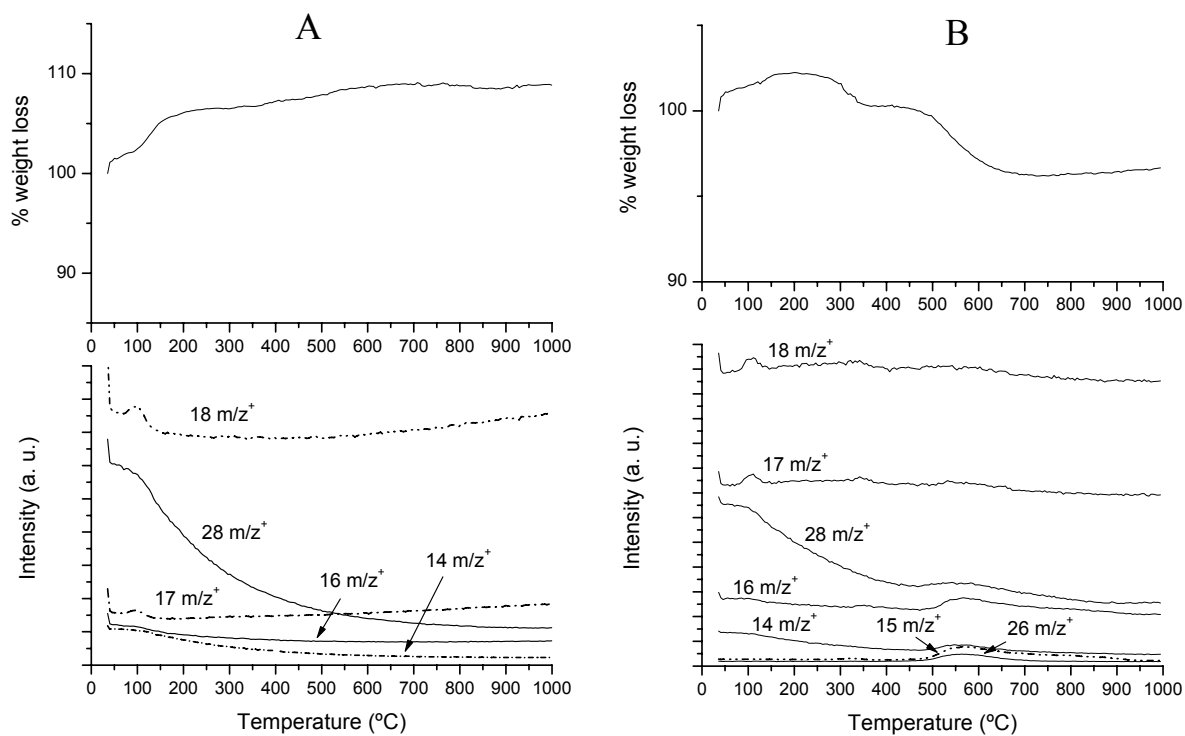


Fig. S1 (A) TG-MS of the SBA-15 support. (B) TG-MS of the SBA-15 modified with the aminosilane linker (SBA-15SNH₂).

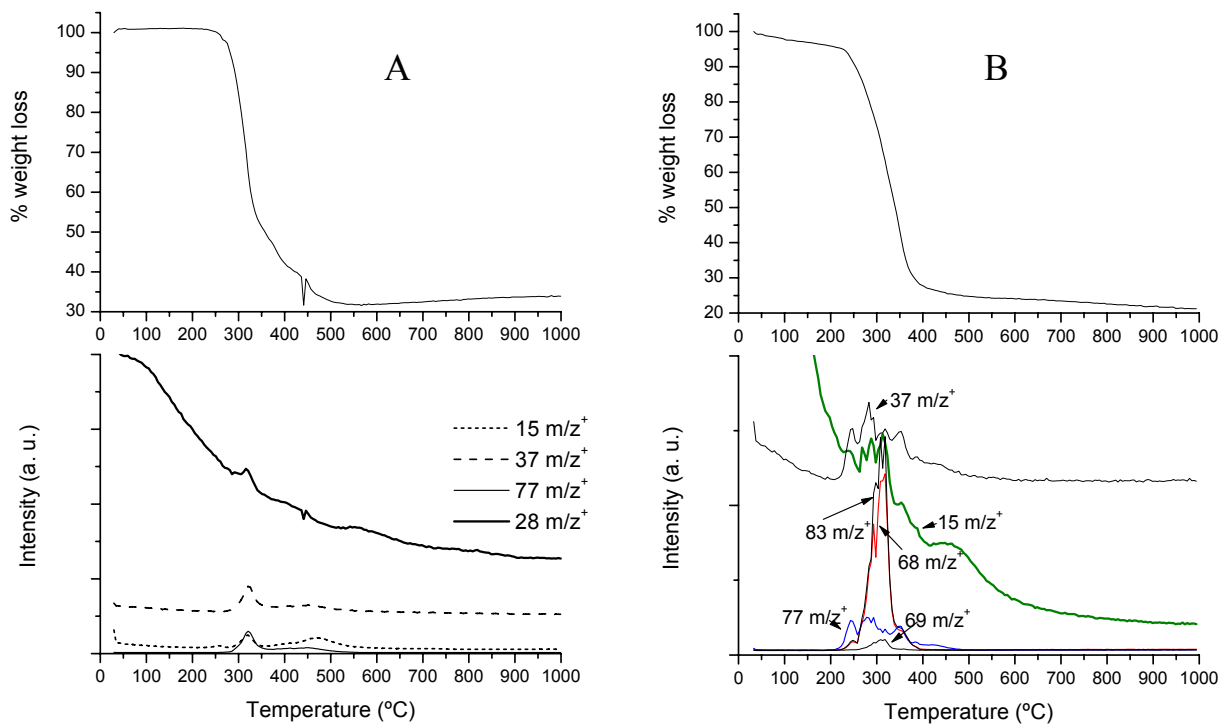


Fig. S2 TG-MS of the organometallic complexes. (A) Complex 2, $\text{Cp}^*\text{RuCl}(\text{PPh}_3)_2$. (B) Complex 3, $\text{Cp}^*\text{RuCl}(\text{C}_3\text{H}_2\text{N}_2(\text{Cy})_2)(\text{PPh}_3)$.

NMR:

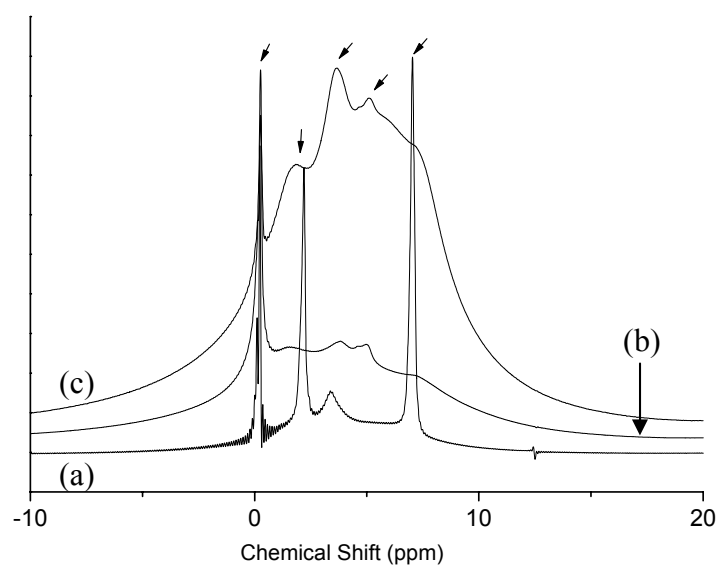


Fig. S3 ^1H MAS-NMR spectra of (a) SBA-15 NH_2 ; (b) SBA-15 $\text{NH}_2\text{Cp}^*\text{Ru}$; (c) SBA-15 $\text{NH}_2\text{Cp}^*\text{RuNHC}$.