

Figure S11: In-phase (χ_M' , plotted as $\chi_M' T$ versus T) ac susceptibility for complex **1**.

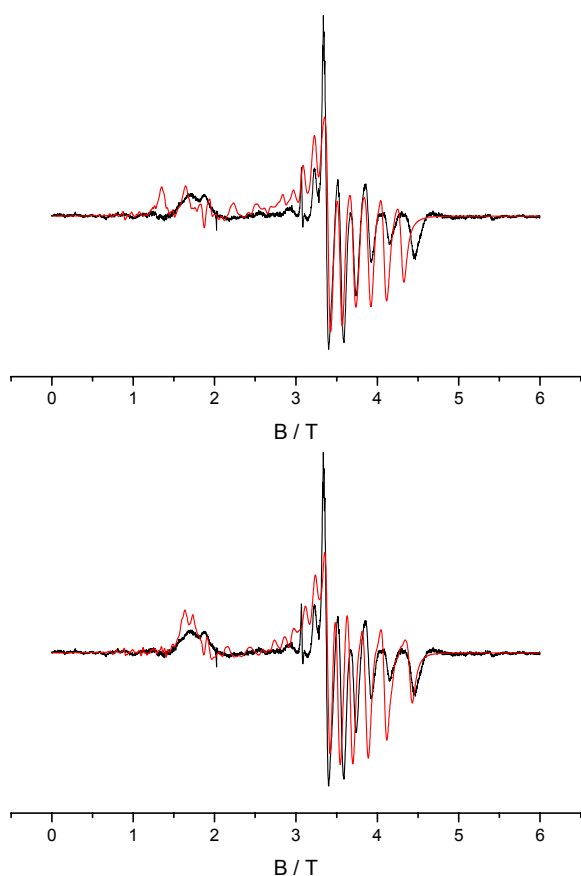


Fig S12. W-band EPR spectra of restrained polycrystalline sample of **1** at 10 K (black), with simulations based on axial SEL Hamiltonian (1) with (i) $D = -0.14 \text{ cm}^{-1}$, $B_4^0 = 0$, and (ii) $D = -0.14 \text{ cm}^{-1}$, $B_4^0 = +1.5 \times 10^{-5} \text{ cm}^{-1}$. Both models use $g_{\text{iso}} = 2.06$.